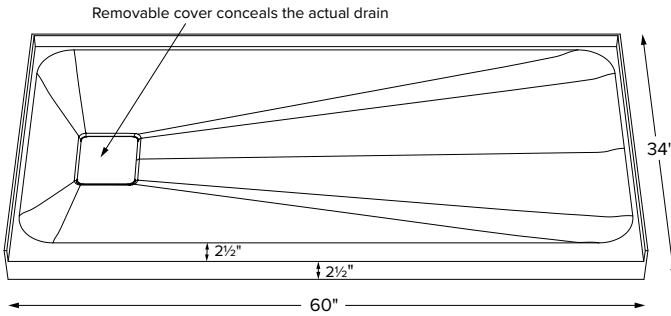


Designer Collection Shower Bases

6034IFM



Shown with color matched SculptureStone® drain cover

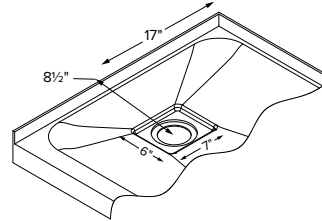


When ordering, please specify left- or right-hand drain.

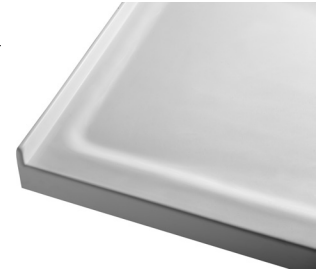


Optional stainless steel hidden drain cover shown above

60" x 34" x 2.5"
SINGLE THRESHOLD smooth floor
End Drain
DoloMatte® 80 lbs / 36 kg



Hidden drain cover is removable for access.



Features softened edges and corners

Model #	Material	Color / Finish	Package Content	MSRP
SBDM6034IFM	DoloMatte®	White (CWH) / Matte	Matching SculptureStone Hidden Drain Cover, PVC drain kit in chrome finish	\$2,475

Available in white only. Not for use in steam shower applications.

Options *Must be ordered at time of purchase*

Quick Ship (QSPRI) \$450

Reduces lead time. Please call for availability.

Radiance® (RAD100) \$1,675 Shower floor heating system. Radiance heating grids are fully integrated within the acrylic shell structure of the shower floor. Requires a 110-volt, 15 amp GFCI and remote installation of control box & keypad.

Hidden Drain Cover Options Substitute included Hidden Drain Cover with any of the following available options:

Natural Stainless Steel Hidden Drain Cover (DCH6S)
Must specify part code on order; comes in lieu of standard cover.

PVC Drain Kit Finishes Chrome included with shower base
Brushed Nickel upcharge (SBDKBN) **\$70**

Accessories

Drain Kit

Solid Brass Drain Kit with Stainless Steel Trim (SBDKSB) **\$205**

Teak Shower Seat

Premium

Natural Stainless (TK-SSEAT2416BNS) **\$3,125**

High-Polished Stainless (TK-SSEAT2416BHP) **\$3,570**

Standard

Natural Stainless (TK-SSEAT2215NS) **\$1,160**

High-Polished Stainless (TK-SSEAT2215HP) **\$1,620**

Teak Bath Mat (TKMAT3018) \$840 Measures 30" x 17.5" x 1"
Custom sizes also available. Contact MTI for details.

IMPORTANT ORDERING & INSTALLATION INFORMATION

- 3-sided integral tile flange to facilitate installation. Must specify drain hand on order.
- Single threshold design.
- 3.5" drain opening pre-drilled.
- Drain finish options on this sheet are upcharge prices only. Contact MTI for ordering details for drain kits sold separately.
- Add proper wet-bedding compound to fully support bottom of shower base. See installation instructions.
- All bases are in accordance with CSA B45.5/IAPMO Z124 standard and compliant with ASTM C 1028-07 coefficient of friction. DoloMatte bases meet ANSI A137.1/A326.3 coefficient of friction and AS HB198:2014 pendulum slip resistance testing.

- Options and accessories may be packaged inside the box. Always check packaging before discarding.
- All product measurements are ±1/2".
- Specifications and configurations are subject to change without notice.
- Measurements herein supersede all others published prior to publication date below.

See the Installation & Operation Manual for more details.

MTI's Customer Service: Monday-Friday 8am-6pm EST
800-783-8827 or service@mtibaths.com

CSA # MTSB-6034IFM
HIRL # MTSB-DM6034IFM

©2024 by MTI Baths, Inc. Modification Rights Reserved



Rev. 04 30 2024