



MODEL USI/SM/10YR & USI/SM/10YR/3

Multi-Criteria Single Station Smoke Alarm

Universal Sensing Plus®

2-in-1 Smoke & Fire Alarm

with 10 Year Tamper Proof, Permanent Power, Lithium-Free, Sealed Battery Power

THANK YOU for purchasing this smoke and fire alarm. This alarm does not require battery changes. It has a permanent power lithium free sealed battery backup which will last for approximately 10 years from the date of activation. This manual includes important information regarding where to install the alarm, how to operate, maintenance, testing and product features. It also includes tips and information which could help protect you and your family. This alarm detects products of combustion using a multi-criteria smoke and fire sensor.

| TABLE OF CONTENTS | PAGE |
|--|-------------|
| Smoke Alarm Limitations and Functions | 2 |
| Recommended Location of Alarms..... | 3 |
| Avoid These Locations..... | 4 |
| Early Warning | 4 |
| How to Install..... | 4 |
| Electrical Shock Hazard | 4 |
| Locking/Tamper Feature | 4 |
| Operation, Testing & Maintenance | 5 |
| QUICK FIND® Alarm Originating Feature | 5 |
| Silence Feature | 6 |
| Cautions/Warnings..... | 6 |
| Battery and Alarm Deactivation..... | 7 |
| Develop and Practice a Plan of Escape | 8 |
| Quick Reference Guide / Operational Summary..... | 9 |
| Warranty | 10 |

READ ALL INSTRUCTIONS

This smoke alarm uses an extremely small amount of a radioactive element in the ionization chamber. Do not tamper with radioactive sealed source or try to repair the smoke alarm yourself.

SMOKE ALARM LIMITATIONS AND FUNCTIONS

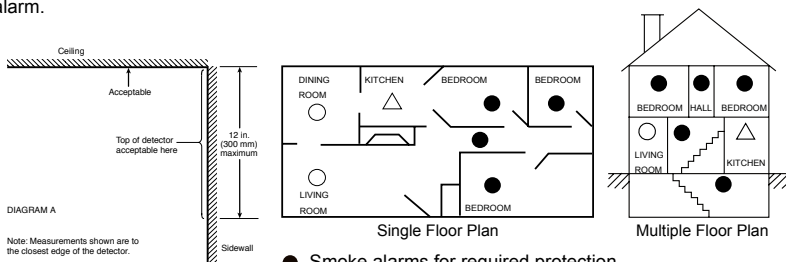
- There are three basic smoke alarm types: **UNIVERSAL® Sensing Plus®, Ionization and Photoelectric.**
- **UNIVERSAL® Sensing Plus® detects products of combustion using patented Smart Alarm Technology and a multi criteria sensor.** Alarms containing **UNIVERSAL® Sensing Plus®** are effective at detecting fast flaming fires and slow smoldering fires.
- **Ionization** smoke alarms are typically more effective at detecting fast flaming fires—fires which consume combustible materials rapidly and spread quickly. Sources of these fires may include paper burning in a wastebasket, or kitchen grease fires.
- **Photoelectric smoke alarms**, on the other hand, are typically more effective at detecting slow smoldering fires—fires which burn for hours before bursting into flame. Sources of these fires may include cigarettes burning in couches or bedding.
- **Installing alarms** containing **UNIVERSAL® Sensing Plus®** ensures maximum detection of both types of fires from a single alarm.
- **The enclosed alarm is a 2-in-1 UNIVERSAL® Sensing Plus® Smoke and Fire Smart Alarm.**
- SMOKE ALARMS WILL NOT WORK DURING A LOSS OF POWER. SINCE A SMOKE ALARM WILL NOT WORK WITHOUT POWER, having an alarm(s) that works from two completely different power sources, such as an AC direct wire with battery backup smoke alarm, can give you an extra measure of protection in case of an AC power failure or a dead battery. Battery operated alarms cannot work if the batteries are missing, disconnected or dead. AC (only) powered alarms cannot work if the AC power is cut off for any reason. If you are concerned about the limitations of the battery or AC power, install both types of alarms.
- USING AN IONIZATION SMOKE ALARM IN A SMOKY AREA, SUCH AS A KITCHEN, OR IN A HIGH HUMIDITY AREA NEAR A SHOWER, CAN CAUSE NUISANCE FALSE ALARMS. IT IS PREFERABLE TO USE PHOTOELECTRIC ALARMS IN THESE AREAS. DO NOT TURN OFF THE AC POWER TO QUIET THE ALARM. A SMOKE ALARM WILL NOT HELP PROTECT YOU IF IT IS NOT POWERED. Properly locate your alarm to avoid nuisance alarms.
- A SMOKE ALARM MAY NOT ALWAYS WARN YOU ABOUT FIRES CAUSED BY CARELESSNESS AND SAFETY HAZARDS LIKE SMOKING IN BED, VIOLENT EXPLOSIONS, ESCAPING GAS, IMPROPER STORAGE OF FLAMMABLE MATERIALS, OVERLOADED ELECTRICAL CIRCUITS, CHILDREN PLAYING WITH MATCHES, NATURAL CAUSES SUCH AS LIGHTNING, OR ARSON. FIRE PREVENTION IS YOUR BEST SAFEGUARD.
- INSTALLING SMOKE ALARMS MAY MAKE YOU ELIGIBLE FOR LOWER INSURANCE RATES, BUT SMOKE ALARMS ARE NOT A SUBSTITUTE FOR INSURANCE. Homeowners and renters alike should continue to insure their lives and properties.
- SMOKE ALARMS CANNOT DETECT FIRES IF THE SMOKE DOES NOT REACH THEM. Smoke from fires may not reach the sensing chamber and set off the alarm. One alarm should be installed inside each bedroom or sleeping area. Do not obstruct airflow around the smoke alarm or place in areas of obstructed airflow.
- BE AWARE OF VARIOUS SITUATIONS AGAINST WHICH THE SMOKE ALARM MAY NOT BE EFFECTIVE. For example: (1) Fires where the victim is intimate with a flaming initiated fire; for example, when a person's clothes catch fire while cooking; (2) Fires where the smoke is prevented from reaching the alarm due to a closed door or other obstruction or (3) Incendiary fires where the fire grows so rapidly that an occupant's egress is blocked even with properly located alarms.
SMOKE ALARMS MAY NOT DETECT FIRE ON ANOTHER FLOOR OR AREA OF THE HOME. Recommended minimum protection is at least one smoke alarm in every sleeping area and every bedroom on every level of your home. Interconnected smoke alarms may provide earlier warning than stand-alone smoke alarms since all smoke alarms alarm when one detects smoke.
- SMOKE ALARMS MAY NOT BE HEARD. The alarm horn in this alarm meets or exceeds current standards, but it may not be heard if: (1) the smoke alarm is located outside a closed or partially closed door; (2) residents recently consumed alcohol or drugs; (3) the alarm is drowned out by noise from stereos, TV's, air conditioners or other appliances; (4) residents are hearing impaired or (5) if residents are sleeping.
CURRENT STUDIES HAVE SHOWN SMOKE ALARMS MAY NOT AWAKEN ALL SLEEPING INDIVIDUALS AND THAT IT IS THE RESPONSIBILITY OF INDIVIDUALS IN THE HOUSEHOLD WHO ARE CAPABLE OF ASSISTING OTHERS TO PROVIDE ASSISTANCE TO THOSE WHO MAY NOT BE AWAKENED BY THE ALARM SOUND OR TO THOSE WHO MAY BE INCAPABLE OF SAFELY EVACUATING THE AREA UNASSISTED.
- SMOKE ALARMS ARE NOT FOOLPROOF. You must test the smoke alarm weekly to ensure your continued protection. Smoke alarms cannot prevent or extinguish fires.
- SMOKE ALARMS HAVE A LIMITED LIFE. The smoke alarm should be replaced immediately if it is not operating properly. You should always replace a smoke alarm after 10 years.
- SMOKE ALARMS ARE NOT TO BE USED WITH DETECTOR GUARDS UNLESS THE COMBINATION HAS BEEN EVALUATED AND FOUND SUITABLE FOR THAT PURPOSE.

This alarm meets the new UL217 8th Edition requirements for the detection of polyurethane foam in both slow smoldering & fast flaming fires; resistance to false alarms from cooking; and it passes the tests for immunity to high-voltage current surges.

RECOMMENDED LOCATION OF ALARMS

- Locate the first smoke alarm in the immediate area of the bedrooms. Try to protect the escape route as the bedrooms are usually farthest from an exit. If more than one sleeping area exists, locate additional smoke alarms in each sleeping area. If a hall is more than 41 feet (12.5 meters) long, install a smoke alarm at each end.
- Locate additional smoke alarms to protect any stairway as stairways act like chimneys for smoke and heat.
- Locate at least one smoke alarm on every floor level.
- Locate a smoke alarm in any area where a smoker sleeps or where electrical appliances are operated in sleeping areas.
- Smoke, heat and other combustion products rise to the ceiling and spread horizontally. Mounting the smoke alarm on the ceiling in the center of the room places it closest to all points in the room. Ceiling mounting is preferred in ordinary residential construction. However, in mobile homes, wall mounting on an inside partition is preferred to avoid the thermal barrier that may form at the ceiling.
- When mounting smoke alarm on a wall, if local codes allow, use an inside wall with the top edge of the smoke alarm a maximum of 12" (30.5cm) below the ceiling/wall intersections (See Diagram A).

The following suggestions are intended to help you with the location and installation of your smoke alarm.



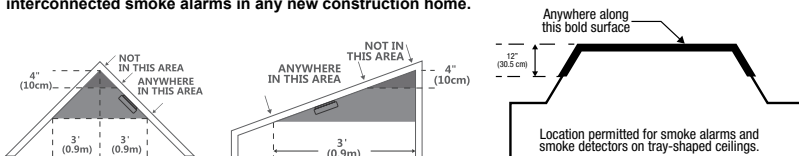
- Smoke alarms for required protection
- Smoke alarms for additional protection
- △ Not within 10ft of appliances

Existing Homes:

The NFPA requires a smoke alarm on every level and outside each sleeping area in existing construction. An existing household with one level and one sleeping area is required to have one smoke alarm.

New Construction Homes and Manufactured Homes:

The NFPA requires AC-powered, interconnected smoke alarms to be installed inside each bedroom, outside each bedroom area, and on every level of the home. They also require a minimum of two AC-powered, interconnected smoke alarms in any new construction home.



Sloped Ceilings (Peaked Ceilings):

Smoke alarms or smoke detectors mounted on a peaked ceiling shall be located within 36 in. (914 mm) horizontally of the peak, but not closer than 4 in. (102 mm) vertically to the peak.

Sloped Ceilings (Shed Ceilings):

Smoke alarms or smoke detectors mounted on a sloped ceiling having a rise greater than 1 ft. in 8 ft. (1 m in 8 m) horizontally shall be located within 36 in. (914 mm) of the high side of the ceiling, but not closer than 4 in. (102 mm) from the adjoining wall surface.

Tray-Shaped Ceilings:

Smoke alarms or smoke detectors shall be installed on the highest portion of the ceiling or on the sloped portion of the ceiling within 12 in. (305 mm) vertically down from the highest point.

Mobile Home Installation:

For minimum protection, smoke alarms should be installed in compliance with H.U.D. Manufactured Home Construction Safety Standards, Title 24 CFR, Section 3280.208 and Section 3282. For additional protection, see Single Story Residence smoke alarm requirements/recommendations for Existing Homes and New Construction Homes.

Note: For mobile homes built before 1978, install smoke alarms on inside walls between 4" and 12" from the ceiling (older mobile homes have little or no insulation in the ceiling). This is especially important if the ceiling is unusually hot or cold.

Install a smoke alarm inside each bedroom and in the hallway outside each separate sleeping area.

AVOID THESE LOCATIONS

- the garage – products of combustion are produced when you start your vehicle.
- near appliances or areas where normal combustion regularly occurs (kitchens, near furnaces, gas hot water heaters). Use smoke alarms with Ionization® or photoelectric sensors, or smoke alarms with Silence Feature for these areas.
- in areas with high humidity, like bathrooms or areas near dishwashers or washing machines. Install at least 3 feet (0.9 meters) away from these areas.
- in areas of turbulent air such as air returns or heating and cooling supply vents, smoke alarms shall not be located where airflow prevents smoke from reaching the alarms.
- in extremely dusty, dirty or insect-infested areas. Loose particles interfere with smoke alarm operation.
- in areas where temperature may fall below 40°F (4.4°C) or rise above 100°F (37.8°C).
- Humidity operating range is up to 95% RH non-condensing
- closer than 1 foot (0.3m) from fluorescent lights, electrical "noise" and flickering may affect the alarm's operation.
- closer than 3 feet (0.9m) horizontal path from the tip of the blade of a ceiling suspended (paddle) fan.
- on a poorly insulated ceiling or exterior wall (mount smoke alarm on an inside wall).

This alarm will not work until it is activated and properly installed. This alarm should be tested immediately after installation and then tested weekly after that. If the alarm ever fails to test correctly, have it replaced immediately. If the alarm is not working properly, it cannot alert you to a problem. This alarm must have battery power to operate. If the battery is dead, the alarm cannot operate. The sealed battery cannot be replaced.

⚠CAUTION!

Early warning fire detection is best achieved by the installation of fire detection equipment in all rooms and areas of the household as follows: A smoke alarm installed in each separate sleeping area (in the vicinity of, but outside of, the bedrooms); and, as appropriate, heat or smoke alarms in living rooms, dining rooms, kitchens, hallways, attics, furnace rooms, closets, utility storage rooms, basements and attached garages. Test the alarms weekly to assure proper operation.

HOW TO INSTALL

IMPORTANT: Read all instructions before using this product.

CAUTION: This smoke alarm is sealed. The cover is not removable.

1. A mounting bracket is provided on the back of the alarm. Remove the mounting bracket from the back of the alarm by holding the mounting bracket and twisting the alarm in the direction indicated by the "TWIST TO REMOVE" arrow on the side of the alarm base.
2. Attach the mounting bracket in the proper location on the wall or ceiling (screws and anchors provided).
3. Activate the Permanent Power battery feature by removing and discarding the battery pull tab. The alarm will sound one long beep to confirm it is powered up. Once activated, the alarm cannot be turned off without permanent deactivation. The alarm will remain on for the next ten years (under normal operating conditions).
4. Press and release the Test/Silence button. The alarm will sound 3 beeps and the red smoke LED will blink in sync with the cycle of 3 beeps and turn off.
5. Push and twist the alarm clockwise onto the mounting bracket.
6. The red LED will blink on approx. every 2 minutes to indicate proper operation.
7. Refer to Locking/Tamper feature to utilize the optional tamper resistant feature.
8. Test the alarm again after it is mounted to ensure proper operation.

⚠WARNING!

This alarm will not operate until the long beep is heard immediately after removing the pull tab.

Press and release the test button. If the alarm sounds, it has been effectively activated.

If the alarm does not sound after pressing the test button, the alarm is not activated and will not provide protection.

⚠WARNING!

Failure to properly install and activate this alarm will prevent proper operation of this alarm and will prevent its response to fire hazards.

Test the alarm following installation and weekly thereafter. The built-in test switch accurately tests the alarm operation as required by ANSI/UL217 Standards for Safety. If, at any time, you test the alarm and it does not perform as described, replace it immediately. **CAUTION:** Due to the loudness of the alarm, we suggest that you place your fingers over the sounder opening while testing your alarm. Continuous exposure to the high sound level of this alarm over an extended period of time may cause hearing loss.

OPTIONAL TAMPER RESISTANT FEATURE: The tamper resistant locking feature for this model deters someone from removing the alarm from the mounting bracket. The breakaway locking pin is clearly marked and molded into the mounting bracket. Refer to Figure 1.

TO ACTIVATE THE ALARM LOCKING FEATURE: Do not activate the locking feature until you have activated the battery, mounted the smoke alarm to the bracket and tested the smoke alarm. Refer to OPERATION, TESTING & MAINTENANCE instructions on Page 5.

1. Detach the breakaway alarm locking pin from the mounting bracket.

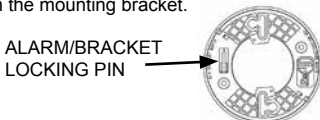


FIGURE 1

2. Insert the pin into the hole in the side of the alarm after the alarm has been installed on the mounting plate. Refer to the diagram below for correct placement.



TO DEACTIVATE THE LOCKING FEATURES: To remove the smoke alarm for cleaning or servicing, you must first remove the locking pin, if it has been installed.

1. Use long nose pliers to pull the locking pin out of the hole.
2. It is now possible to remove the smoke alarm.

OPERATION, TESTING & MAINTENANCE

OPERATION: The smoke alarm is operating once the battery power is connected by removing the pull-tab. When products of combustion are sensed, the alarm sounds a loud alarm which continues until the air is cleared.

This alarm incorporates the NFPA recognized horn signal for evacuation. During alarm mode, the horn produces three beeps followed by a two second pause and then continually repeats.

READY/ACTIVE CONDITION: The red LED blinks on once approx. every 2 minutes to indicate the alarm is properly functioning.

ALARM CONDITION: The alarm emits a loud, pulsating alarm sound and the red LED blinks on in sync with horn.

NUISANCE ALARMS: The smoke alarm is designed to minimize nuisance alarms. Smoking will not normally set off the alarm unless smoke is blown directly into the smoke alarm. Combustion particles from cooking may set off the alarm if the smoke alarm is located close to the kitchen cooking surface. Large quantities of combustion particles are generated from spills or broiling.

If the smoke alarm does sound, check for fires first. If a fire is discovered, get out and call the fire department. If no fire is present, check to see if one of the reasons listed above may have caused the alarm. Use the Silence Feature if it is a nuisance alarm, or reset the alarm by pressing and holding the Test/Silence button for ten seconds. Refer to RESET below.

NOTE: It is best to "reset" the alarms before initial test is performed. See below for Reset procedures.

TESTING: Test by pressing the Test/Silence button on the smoke alarm cover until the alarm sounds, then release. The alarm sounds if all electronic circuitry, horn and battery are working. If no alarm sounds, the alarm may have a power supply failure. **Test the smoke alarm weekly to assure proper operation. IMPORTANT:** Under normal conditions, the test button should sound the alarm immediately after it is pressed. There are special conditions that, when you press the Test/Silence button, you will experience a delay of approx. 10-15 seconds before the alarm sounds. This delay occurs if the Test/Silence button is pressed during a self-diagnostic period. This may occur after initial power up. Retest after 10-15 seconds.

NOTE: Actuation of the test button must be by use of a person's finger or thumb. Use of any other instrument is strictly prohibited.

ALARM ORIGATION: The QUICK FIND® feature will allow you to immediately locate any originating alarm (once the alarm has stopped sounding). To initiate QUICK FIND®, press the Test/Silence button on each alarm. After releasing the button, any originating alarm will continue to sound for 60 seconds. It is necessary to test each alarm to determine any originating alarm.

RESET: To reset the QUICK FIND® Alarm Origination condition, press and hold the Test/Silence button on each alarm for at least 10 seconds and then release. This will clear alarm origination indicator. Reset after each alarm activation.

END-OF-SERVICE LIFE NOTIFICATION: A majority of home fire deaths are a result of no smoke alarms or no *working* smoke alarms. In addition to the "replace by date" stamped on the back of your alarm, your alarm contains a unique audible end-of-service life notification feature. When it is time to replace your alarm, which is after approximately 10 years of operation from initial power up, the alarm will sound 2 chirps approx. every 60 seconds and the red LED will blink on once approx. every 2 minutes. The alarm should be replaced immediately.

IMPORTANT CONSIDERATIONS

YOUR ALARM HAS BEEN DESIGNED WITH A PRODUCT END-OF-SERVICE LIFE WARNING WHICH WILL SOUND AFTER APPROXIMATELY 10 YEARS OF OPERATION FROM INITIAL POWER UP.

NOTE: MANUFACTURER RECOMMENDS REPLACEMENT OF THIS ALARM 10 YEARS AFTER DATE OF INSTALLATION. NOTE: NUMEROUS ALARMS OR PROLONGED ALARMING IS NOT TYPICAL AND WILL CONSUME THE BATTERY CAPACITY, SHORTENING THE LIFE OF THIS PRODUCT.

⚠WARNING!

NEVER use an open flame of any kind to test this smoke alarm. You might accidentally damage or set fire to the smoke alarm or to your home. The built-in test switch accurately tests the smoke alarm's operation as required by Underwriters Laboratories Inc. (UL).

⚠CAUTION!

If you choose to use an aerosol smoke product to test the smoke alarm, be certain to use one that has been Listed to Underwriters Laboratories, Inc. Safety Standards and use it only as directed. Use of non-UL Listed products or improper use of UL Listed products may affect the smoke alarm's sensitivity.

NUISANCE ALARM SILENCE FEATURE: This feature is to be used only when a known alarm condition, such as smoke from cooking, activates the smoke alarm. The smoke alarm Silence Feature is activated by pushing and releasing the Test/Silence button on the smoke alarm cover while in alarm condition. The smoke alarm will automatically reduce sensitivity and the red LED will blink on approx. every 10 seconds to indicate the alarm is in the Silence mode. The smoke alarm will gradually regain normal sensitivity and sound the alarm if particles of combustion are still present. The approx. 10 minute Silence feature may be used repeatedly until the air has cleared, by pushing and releasing the Test/Silence button again. Resetting the smoke alarm after a nuisance alarm is recommended.

NOTE: If the Test/Silence button is pressed and held during the Silence mode, the smoke alarm will be tested normally. Upon the release of the Test/Silence button, the Silence mode will be restarted.

Before using the alarm Silence Feature, identify the source of smoke and be certain that safe conditions exist.

REGULAR MAINTENANCE: Test the alarm at least once per week to verify it is operating properly. Clean this alarm at least once a month to remove dust, dirt, insects and debris. Using a soft brush or wand attachment to a vacuum cleaner, vacuum all sides and cover of smoke alarm. Be sure all the vents are free of debris.

DO NOT use spray cleaning chemicals or insect sprays directly on or near the alarm. DO NOT paint the alarm. Doing so may permanently damage the alarm and interfere with alarm's ability to sense smoke. The outside can be wiped with a damp cloth. DO NOT use any household cleaning agents, solvents or sprays including compressed gas dusters or any other chemical on or near your alarm. DO NOT disassemble or attempt to clean inside the alarm. This alarm contains no serviceable parts. If the alarm becomes contaminated by excessive dirt or grease, and cannot be cleaned, it should be replaced immediately. Alarms have a limited life and should always be replaced 10 years from the date of purchase.

**AFTER CLEANING, REINSTALL YOUR ALARM AND
TEST YOUR ALARM BY USING THE TEST BUTTON**

⚠️WARNING!

BATTERY AND ALARM DEACTIVATION

This alarm uses a sealed battery. The battery should last for approximately 10 years under normal operating conditions. The smoke alarm has a low battery indicator which is 2 chirps approx. every 60 seconds. The red LED blinks on once approx. every 2 minutes.

Due to the loud 85 decibel alarm, stand at arm's length away from the alarm or use ear protection when testing. Weekly testing is required to ensure proper operation. Irregular or low volume sound may indicate a defective alarm and it should be returned for service. Follow instructions to prepare alarm for shipment or disposal.

⚠️WARNING!

Deactivation of the alarm is permanent.

Do not attempt to open the alarm for any reason.

Place this alarm into shut-down mode at the end of its useful service life. Once the smoke alarm has entered end-of-service-life mode, it is necessary to deactivate the alarm operation. This will stop the product end-of-service-life warning signal and also discharge the remaining capacity of the battery to render it safe for disposal.

1. Remove the alarm from the mounting bracket by rotating it in the direction shown by the arrows on the rim of the base.
2. The alarm deactivation key is located in the mounting bracket of the alarm. See Figure2.
3. Use a small flat blade tool to remove the deactivation key (breakaway) from the mounting bracket.
4. Push tip of key into the deactivation slot (keyhole) outline on label and insert fully.
5. Turn key clockwise to the "off" position slowly approximately 3/4 turn.
6. This will discharge the alarm battery and stop the alarm chirping after approximately one minute. The alarm is now ready for disposal.
7. The deactivation key should not be removed and the alarm cannot be attached to the bracket.
8. **Be sure to install a new alarm.**

⚠️WARNING!

Once this alarm has been deactivated:

- The alarm cannot be reactivated
- The alarm cannot be reattached to the bracket
- The alarm will no longer detect smoke

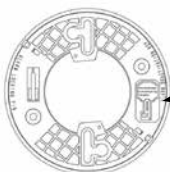


FIGURE 2

REPAIRS AND SERVICES

This smoke alarm contains less than 1 microcurie (37 kilobecquerel) of Americium 241, a radioactive material. **The distribution of these ionization-type smoke alarms is licensed by the U.S. Nuclear Regulatory Commission; the consumer is exempt from any licensing or requirements.** If the smoke alarm is defective in any way, do not tamper with the smoke alarm. Return the smoke alarm for servicing. (See warranty for instructions or in-warranty returns.) There will be a service charge for repairing out of warranty smoke alarms.

DEVELOP AND PRACTICE A PLAN OF ESCAPE

BASICS OF ESCAPE PLAN

- o Make a floor plan indicating all doors and windows and at least two escape routes from each room. Second story windows may need a rope or chain ladder.
- o Have a family meeting and discuss your escape plan, showing everyone what to do in case of fire.
- o Determine a place outside your home where all of you can meet if a fire occurs.
- o Familiarize everyone with the sound of the smoke alarm and train them to leave your home when they hear the sound.
- o Identify children's bedrooms with red stickers placed in the upper left corner of the windows. They are available from your local fire department.
- o Practice a fire drill at least every six months. Practice allows you to test your plan before an emergency. You may not be able to reach your children. It is important they know what to do!

WHAT TO DO WHEN THE ALARM SOUNDS

- o Leave immediately by your plan of escape. Every second counts, so don't waste time getting dressed or picking up valuables.
- o In leaving, don't open any inside door without first feeling its surface. If hot, or if you see smoke seeping through cracks, ***don't open that door!*** Instead, use your alternate exit. If inside door is cool, place your shoulder against it, open it slightly and be ready to slam it shut if heat and smoke rush in.
- o Stay close to the floor if air is smoky. Breathe shallowly through a cloth, wet if possible.
- o Once outside, go to your selected meeting place and make sure everyone is there.
- o Call the fire department from your neighbor's home – ***not from yours!***
- o Don't return to your home until fire officials say that it is all right to do so.

CAUTION (AS REQUIRED BY THE CALIFORNIA STATE FIRE MARSHAL)

"Early warning fire detection is best achieved by the installation of fire detection equipment in all rooms and areas of the household as follows. A smoke alarm installed in each separate sleeping area (in the vicinity of, but outside of the bedrooms), and heat or smoke detectors in the living rooms, dining rooms, bedrooms, kitchens, hallways, attics, furnace rooms, closets, utility and storage rooms, basements and attached garages.

NATIONAL FIRE PROTECTION ASSOCIATION REQUIRED INFORMATION

For your information, the National Fire Alarm Code, NFPA 72, reads as follows:

"29.8.1. *Required Detection - Where required by applicable laws, codes, or standards for a specific type of occupancy, approved single and multiple-station smoke alarms shall be installed as follows:

- (1) *In all sleeping rooms and guest rooms
- (2) *Outside of each separate dwelling unit sleeping area, within 6.4 m (21 ft) of any door to a sleeping room, the distance measured along a path of travel
- (3) On every level of a dwelling unit, including basements.
- (4) On every level of a residential board and care occupancy (small facility), including basements and excluding crawl spaces and unfinished attics
- (5) *In the living area(s) of a guest suite
- (6) In the living area(s) of a residential board and care occupancy"

The equipment should be installed using wiring methods in accordance with the National Fire Protection Association's Standard 72.

(National Fire Protection Association, Batterymarch Park, Quincy, MA 02269)

Quick Reference Guide Model USI/SM/10YR & USI/SM/10YR/3

| CONDITION | ALARM AUDIBLE & VISUAL SIGNALS | | RECOMMENDATION |
|---|----------------------------------|--|---|
| | HORN | RED LED | |
| New - Out of Package | Silent | Off | To activate the alarm, remove the pull tab. The alarm will sound one long beep to confirm it is powered up. Press the Test/Silence button. Test the alarm following installation and weekly thereafter. The built-in test switch accurately tests the alarm operation as required by ANSI/UL217 Standards for Safety. If, at any time, you test the alarm and it does not perform as described, replace it immediately. |
| DC Power is Present | Silent | Blinks On once approx every 2 minutes | The alarm is operating properly. |
| Test/Silence Button Has Been Pressed | 3 beeps, 2 second pause, | Blinks On in sync with Horn | The alarm is operating properly. |
| Originating Smoke Alarm | 3 Beeps, 2 second pause, Repeat | Blinks On in sync with Horn | If hazard is identified, please take all precautions if an alarm sounds by calling an Emergency Service and getting out of the home. |
| Nuisance Alarm | 3 Beeps, 2 second pause, Repeat | Blinks On in sync with Horn | If there is no hazard present, verify the alarm is mounted in the correct location (see User's Manual, "AVOID THESE LOCATIONS" section). Reset alarm as instructed below. |
| Alarm has Sensed Smoke | 3 Beeps, 2 second pause, Repeat | Blinks On in sync with Horn | Silence Feature is activated by pressing and releasing the Test/Silence button on any initiating alarm while in alarm condition. Silence mode will last for approx 10 minutes with the red LED blinking once approx. every 10 seconds. |
| Alarm has Previously Sensed Smoke | Silent (alarmed previously) | Blinks On once approx every 2 minutes (normal operation mode) or Blinks On once approx every 10 seconds (silence mode) | QUICK FIND® Alarm Origination - The QUICK FIND® feature will allow you to locate any originating alarm (once the alarms have stopped sounding). To initiate QUICK FIND®, press the Test/Silence button. After releasing the button and following the test sequence, any originating alarm will continue to sound for approx 60 seconds. It is necessary to test each alarm to determine any originating alarm. |
| Alarm needs to be reset due to varying conditions/previous alarms | Silent | Blinks On once approx every 2 minutes (normal operation mode) or Blinks On once approx every 10 seconds (silence mode) | To reset the alarm, hold the Test/Silence button for approx 10 seconds and release. This will clear Alarm Origination. Reset alarm after every alarm event. |
| Low Battery | 1 chirp approx every 60 seconds | Blinks On once approx every 2 minutes | Deactivate alarm (see User's Manual "ALARM DEACTIVATION" section). Replace alarm immediately. |
| Product End-of-Service Life Notification | 2 chirps approx every 60 seconds | Blinks On once approx every 2 minutes | Deactivate alarm (see "ALARM DEACTIVATION" section in User's Manual). Replace alarm immediately. |
| (Alarm Calibration) Warning | Silent | 3 Blinks approx. every 2 minutes | Clean Alarm. See MAINTENANCE instructions on the following page. Reset the alarm. See Reset Instructions below. If this does not clear the problem, replace alarm. Deactivate Alarm. See User's Manual "ALARM DEACTIVATION" section. Replace alarm immediately. |

Alarm Reset - Press and Hold the Test/Silence button for approximately 10 seconds and release. This will clear the Silence Feature and Alarm Origination.

THIS PRODUCT CONFORMS TO UL STANDARD 217 8TH EDITION FOR SAFETY

TEN-YEAR LIMITED WARRANTY

This product is warrantied to be free from defects in material and workmanship for a period of 10 (ten) years from the date of purchase. For products containing a sealed battery, this warranty does not cover any damage that may be caused by the battery. This warranty applies only to the original consumer purchaser and only to products used in normal residential use and service. If this product is found to be defective, the only obligation, and your exclusive remedy, is the repair or replacement of the product, at the company's discretion, provided that the product has not been damaged through misuse, abuse, accident, modification, alteration, neglect, or mishandling. This Warranty shall not apply to any product which is found to have been improperly installed, set-up, or used in any way not in accordance with the instructions supplied with this product.

ALARM RETURNS

For replacement of this alarm under the terms of this Warranty, please contact customer service at feit.com/help for assistance. The company does not warrant, and specifically disclaims any warranty, whether express or implied, of fitness for a particular purpose, other than the warranty contained herein. No implied warranty on this product, created by state law, shall extend beyond the term of this warranty unless such law otherwise provides. The company specifically disclaims any liability and shall not be liable for any consequential or incidental loss or damage, including, but not limited to, damages to any equipment with which this product is used. Some states do not allow the exclusion or limitation of incidental or consequential damages, so the above limitations or exclusions may not apply to you. No agent, representative, dealer, or employee of the company has the authority to increase or alter the obligations or terms of this Warranty. This Warranty gives you specific legal rights and you may also have other rights which vary from state to state. This Warranty is only valid for merchandise purchased from outlets in the United States and Canada. This warranty expires upon product end-of-service life signal.

UNIVERSAL®
SECURITY INSTRUMENTS

4901 Gregg Road,
Pico Rivera, CA 90660,
USA