

BLACK DIAMOND®

Project Name: _____

Location: _____

Item #: _____

Qty: _____

Black Diamond Glass Froster, 2 Sliding Stainless Steel Doors, 14 Cu. Ft. Capacity, in Black

USGF-2L



The Black Diamond Glass Froster is engineered to maximize efficiency behind the bar, featuring a robust 14 Cu. Ft. capacity, durable stainless steel sliding doors, and a modern black vinyl exterior. This commercial glass chiller ensures each glass is optimally chilled between -5° and 2°F for premium beverage presentation and taste. The eco-friendly R290 refrigerant and fully automatic controls simplify use and maintenance. Includes a two-year parts and labor warranty and five-year compressor warranty.

FEATURES AND CONSTRUCTION

- Boasts a 14 Cu. Ft. capacity to support high-volume glass chilling needs
- Equipped with a 1/4 horsepower compressor for efficient cooling
- Constructed with a black vinyl exterior, coated aluminum interior and stainless steel top
- Maintains a temperature range of -5° to 2°F
- Features two durable stainless steel sliding doors for secure, convenient access
- Includes eight adjustable shelves to fit different glass sizes
- Stationary design suitable for freestanding installation, no casters included
- Measures 49.5"W x 26.7"D x 34.2"H for flexible undercounter placement
- Offers a sleek black vinyl exterior for a professional look
- Perfect for pre-chilling glasses for beer, cocktails, and more

ELECTRIC

115V / 60Hz / 1 ph
Cord Length (Inches): 90.60
Plug Type: NEMA 5-15P
Cord set included

NEMA 5-15P



3RD PARTY APPROVALS



WARRANTY (USA / CANADA)

Two (2) Year Limited Warranty on Parts and Labor, Five (5) Year Warranty on Compressor and Evaporator

Contact us for details at 1.877.368.2797



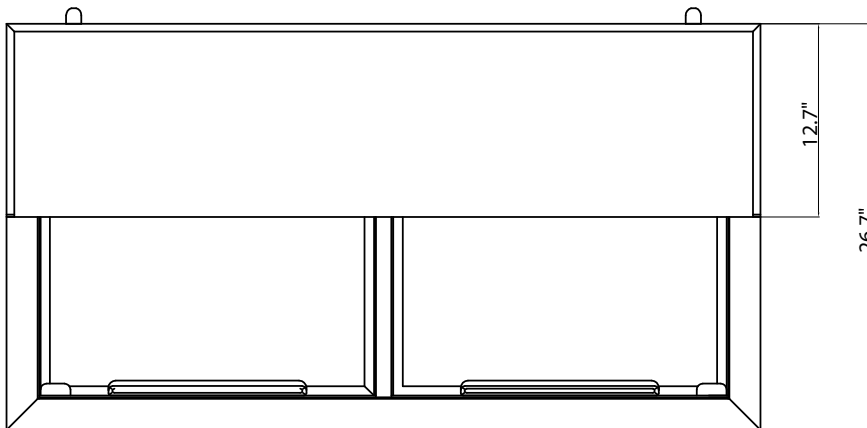
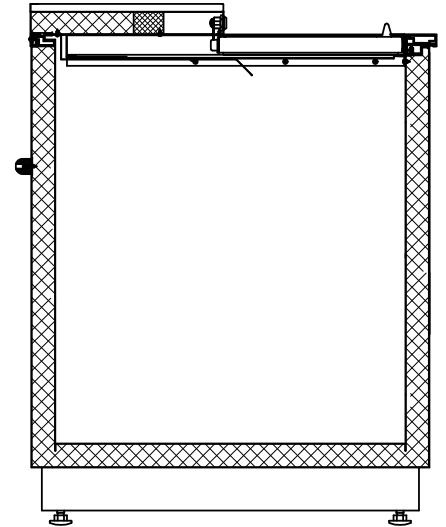
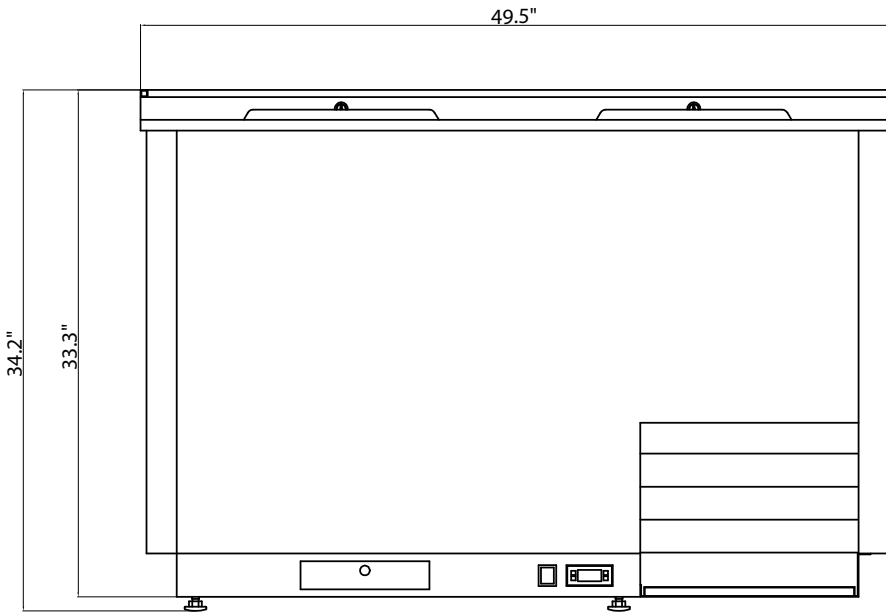
STORAGE CAPACITY

- Cubic Feet: 14 Cu. Ft.
- (250) 8-inch mugs, (240) 10-oz steins

TEMPERATURE

- Holding Temperature (Fahrenheit): -5° - 2°

These models are designed to operate in an environment where temperature and humidity do not exceed 75°F (24°C) and 55% relative humidity



TOP

Glass Froster

Lids	Shelves	Amps	HP	Refrigerant Type / Oz.	Assembled Dimensions (in)	Item Weight (lbs)	Shipping Weight (lbs)
2	8	5.3A	1/4	R290 3.883	49.50" x 26.70" x 34.20"	180.8	225.0