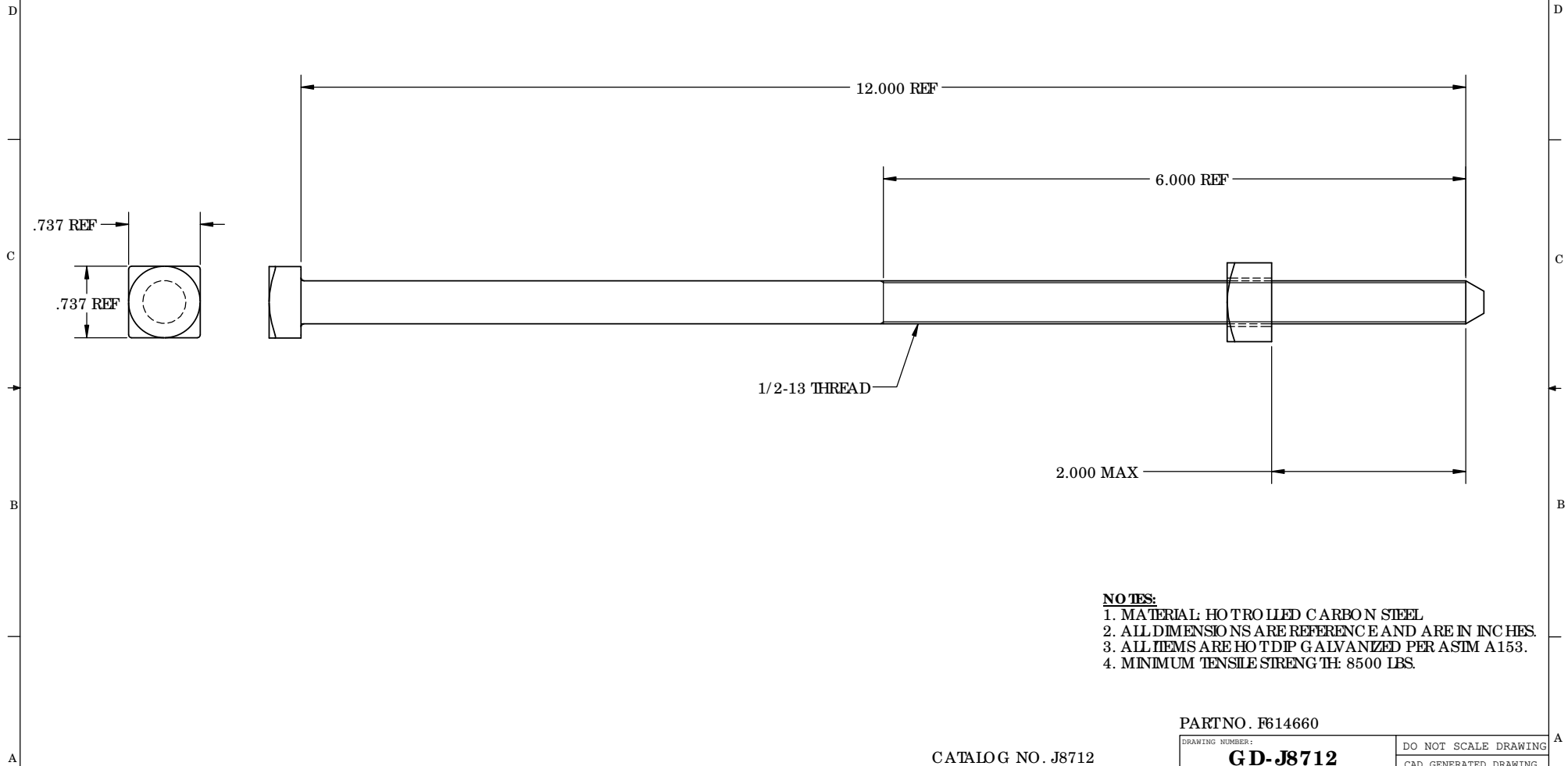


8 7 6 5 4 3 2 1

PAPER SIZE		DRAWING NUMBER	
B		GD-J8712	
REV	REVISED BY	REVISION DATE	ECO #
A	PDR	07-26-12	10675



- NOTES:**
1. MATERIAL: HOTROLLED CARBON STEEL
 2. ALL DIMENSIONS ARE REFERENCE AND ARE IN INCHES.
 3. ALL ITEMS ARE HOTDIP GALVANIZED PER ASIM A153.
 4. MINIMUM TENSILE STRENGTH: 8500 LBS.

PARTNO. F614660

This drawing contains confidential information that is the property of MacLean Power, LLC. ("MacLean"). Use of MacLean's confidential information without MacLean's express written consent is strictly prohibited and may expose you to legal liability. If you believe that you received this material in error, please destroy it or return it to MacLean Power, LLC, 11411 Addison Street, Franklin Park, Illinois 60131, USA.

UNLESS OTHERWISE SPECIFIED
DIMENSIONS ARE IN:

INCHES	
TOLERANCES ARE:	
XX	+/- .XX
.XXX	+/- .XXX
X/XX	+/- X/XX
ANGLES	+/- .XXX

CATALOG NO. J8712

**MACLEAN
POWER
SYSTEMS**

11411 ADDISON STREET
FRANKLIN PARK, IL. 60131

TEL: (847) 455-0014 FAX: (847) 455-0029

DRAWING NUMBER: GD-J8712	DO NOT SCALE DRAWING
SHEET NAME: Sheet 1 OF 1	CAD GENERATED DRAWING DO NOT MANUALLY UPDATE
DRAWING DESCRIPTION: BOLTMACH 1/2 X 12	DESIGN DATE: 07/26/12
DRAWING SCALE: 1:1	DRAWN BY: PDR
	ENGINEER: RRL
	APPROVED: JBB

8 7 6 5 4 3 2 1