

Features

- HydroRail-R arch shower column designed for new installations or retrofit applications to replace an existing shower arm
- 8" Awaken® rainhead with a full coverage spray and an adjustable ball joint for precise spray adjustment
- Shift+™ Round multifunction handshower offers full coverage and targeted massage spray options
- Full coverage produces an encompassing spray ideal for everyday use
- Targeted spray is a focused stream for targeting sore muscles or use as a utility spray
- MasterClean™ sprayface features an easy-to-clean surface that withstands mineral buildup and maximizes spray performance
- 2.5 gpm (9.5 lpm) maximum flow rate at 45 psi (3.1 bar)
- Slidebar bracket allows you to adjust the height and angle of the handshower
- Diverter at base of column makes for easy toggling between handshower and showerhead
- Handshower contains flow-regulating check valve for backflow prevention

Material

- Durable material construction
- KOHLER finishes resist corrosion and tarnishing

Installation

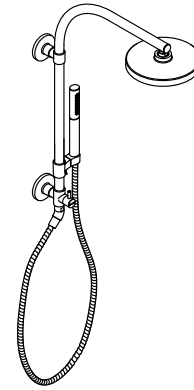
- Shower-only wall-mount installation
- Installs in less than 60 minutes without changes to in-wall plumbing (subject to condition of existing installation)
- May require additional service parts based on installation type (see installation guide for details)

Optional Products/Accessories

- K-9660 Vacuum Breaker
- 1194302 Large Escutcheon/Mounting Collar Kit

Included Components

- K-21335-G Round two-function handshower, 1.75 gpm
- K-45211 Arch shower column
- K-76464-Y 8" single-function rainhead, 2.5 gpm
- K-9514 60" Shower Hose



Codes/Standards


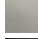

ASME A112.18.1/CSA B125.1
DOE - Energy Policy Act 1992

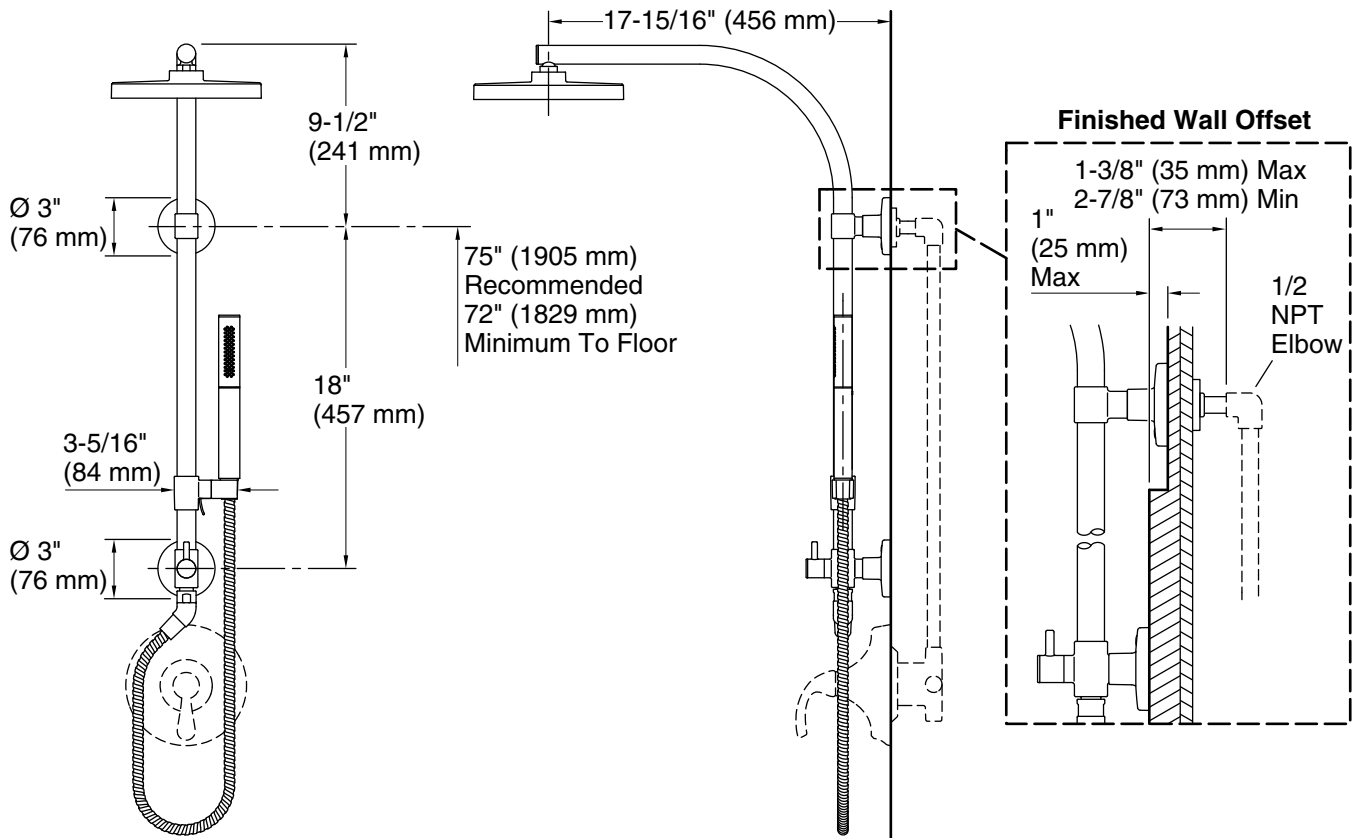
KOHLER® Faucet Lifetime Limited Warranty

See website for detailed warranty information.

Available Colors/Finishes

Color tiles intended for reference only.

Color	Code	Description
	CP	Polished Chrome
	BN	Vibrant® Brushed Nickel
	BL	Matte Black



Technical Information

All product dimensions are nominal.

Spout:

Handshower rated max flow: 2.5 gal/min (9.5 l/min)

Shower/Rainhead rated max flow: 2.5 gal/min (9.5 l/min)

Notes

Install this product according to the installation instructions.

For use with showerheads or handsprays rated at 0 gal/min (0 l/min) or higher.