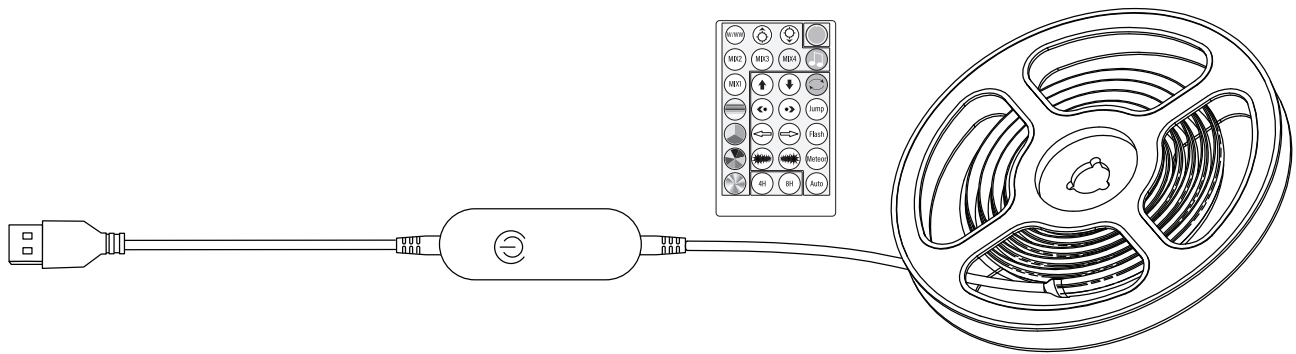


5FT LED ULTRA THIN RGB TAPE LIGHT

IMPORTANT SAFETY INSTRUCTIONS AND INSTALLATION GUIDE



READ BEFORE INSTALLATION
SAVE THESE INSTRUCTIONS



We appreciate the trust and confidence you have placed in Feit Electric through the purchase of this product. We strive to continually create quality products designed to enhance your home. Visit us online to see our full line of products available for your home improvement needs. Thank you for choosing Feit Electric.

Table of Contents

- Safety Information 2
- Warranty 3
- Pre-Installation 3
 - Tool Required 3
 - Hardware Included 3
- Tape Light Installation 4
- Remote Operation 5
- Controller Module Button 5
- Pairing the Tape Light 5

Safety Information

For your safety, always remember to:

- READ AND FOLLOW ALL SAFETY INSTRUCTIONS.
- Read and follow all instructions that are on the product or provided with the product.
- To ensure reliable power delivery use a class 2 power supply adapter with this product.
- The adapter is not intended to be repaired by service personnel in case of failure or component defect (unit can be thrown away).
- Unplug from outlet before installing the product.
- Do not use in a bathroom.
- This product is NOT a toy.
- Do not open the product. Use only as intended.
- Do not roll up the product when using. Spread out to full length before connecting power supply.
- Do not operate if any component is damaged.

CAUTION:

- Use the provided adhesive and tools provided with the product.
- Route and secure cords that they will not be pinched or damaged when furniture is pushed to the wall.
- When mounting lights on furniture ensure product caution remains visible
- Not intended for recessed installation in ceilings.
- Electrical codes do not permit cords to be concealed where damage to insulation may go unnoticed.

To prevent fire danger, do not run cord behind walls, ceilings, soffits, or cabinets where it may be inaccessible for examination. Cords should be visually examined periodically and immediately replaced when any damage is noted. Only use the control provided with or specified by the instructions to control this Tape Light. This product will not operate properly when connected to a dimmer or dimming control.

Product Specifications:

- Input: DC 5V 2A MAX
- Not Dimmable
- Suitable for indoor use

WARNING: RISK OF SHOCK. House electric current can cause painful shock or serious injury unless handled properly.

SAVE THESE INSTRUCTIONS

⚠ **WARNING**

- **INGESTION HAZARD:** This product contains a button cell or coin battery.
- **DEATH** or serious injury can occur if ingested.
- A swallowed button cell or coin battery can cause **Internal Chemical Burns** in as little as **2 hours**.
- **KEEP** new and used batteries **OUT OF REACH** of CHILDREN
- **Seek immediate medical attention** if a battery is suspected to be swallowed or inserted inside any part of the body.

USES 1 3V, TYPE CR2032 BATTERY

CAUTION:

Dispose of used battery promptly according to local recycling or waste regulations. Clean battery contacts and also device contacts prior to installing battery. Ensure the battery is installed correctly with regard to polarity (+ and -). Remove battery from remote when not being used for an extended period of time. Remove used battery promptly. The LEDs in this strip light are not replaceable.

- **WARNING - KEEP BATTERIES OUT OF THE REACH OF CHILDREN.**
- Remove immediately recycle or dispose of used batteries according to local regulations and keep away from children. Do NOT dispose of batteries in household trash or incinerate.
- Even used batteries may cause severe injury or death.
- Call a local poison control center for treatment information if needed.
- Always purchase the correct size and type of battery most suitable for the intended use.
- Non-Rechargeable batteries are not to be recharged.
- Do not force discharge, recharge, disassemble, heat above 45°C/113°F or incinerate. Doing so may result in injury due to venting, leakage or explosion resulting in chemical burns.
- Ensure the batteries are installed correctly with regard to polarity (+ and -).
- Do not mix old and new batteries, different brands or types of batteries, such as alkaline, carbon-zinc, or rechargeable batteries.
- Remove and immediately recycle or dispose of batteries from equipment not used for an extended period of time according to local regulations.
- Always completely secure battery compartment. If battery compartment does not close securely, stop using the product, remove the batteries, and keep them away from children.

Supplier's Declaration of Conformity:
 47 CFR § 2.1077 Compliance Information
Responsible Party:
 Feit Electric Company
 4901 Gregg Road,
 Pico Rivera, CA 90660, USA
 www.feit.com
Unique Identifier:
 TAPE60/TCOB/RGB/USB

FCC STATEMENT: This device complies with part 15 of the FCC Rules. Operation is subject to the following two conditions: (1) This device may not cause harmful interference, and (2) this device must accept any interference received, including interference that may cause undesired operation. Note: This equipment has been tested and found to comply with the limits for a Class B digital device, pursuant to part 15 of the FCC Rules. These limits are designed to provide reasonable protection against harmful interference in a residential installation. This equipment generates, uses and can radiate radio frequency energy and, if not installed and used in accordance with the instructions, may cause harmful interference to radio communications. However, there is no guarantee that interference will not occur in a particular installation. If this equipment does cause harmful interference to radio or television reception, which can be determined by turning the equipment off and on, the user is encouraged to try to correct the interference by one or more of the following measures: Reorient or relocate the receiving antenna. Increase the separation between the equipment and receiver. Connect the equipment into an outlet on a circuit different from that to which the receiver is connected. Consult the dealer or an experienced radio/TV technician for help. Warning: Any changes or modifications not expressly approved by the manufacturer could void the user's authority to operate the equipment.

Radiation Exposure Statement

This device complies with FCC radiation exposure limits set forth for an uncontrolled environment. This device should be installed and operated with a minimum distance of 20cm between the radiator and your body.

Limited Warranty

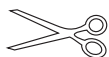
This product is warranted to be free from defects in workmanship and materials for up to 1 year from date of purchase. If the product fails within the warranty period, please contact Feit Electric at feit.com/help for help. REPLACEMENT OR REFUND IS YOUR SOLE REMEDY. EXCEPT TO THE EXTENT PROHIBITED BY APPLICABLE LAW, ANY IMPLIED WARRANTIES ARE LIMITED IN DURATION TO THE DURATION OF THIS WARRANTY. LIABILITY FOR INCIDENTAL OR CONSEQUENTIAL DAMAGES IS HEREBY EXPRESSLY EXCLUDED. Some states and provinces do not allow the exclusion of incidental or consequential damages, so the above limitation or exclusion may not apply to you. This warranty gives you specific legal rights, and you may also have other rights which vary from state to state or province to province.

Pre-Installation

PLANNING INSTALLATION

It is important to read these guidelines completely to understand how color changing LED tape lighting works.

TOOLS REQUIRED (NOT INCLUDED)

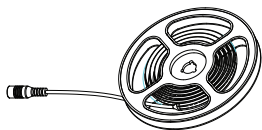


Scissors

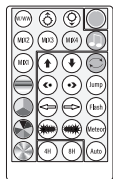


NOTE: Hardware not shown to actual size.

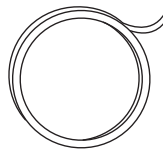
HARDWARE INCLUDED



AA



BB



CC



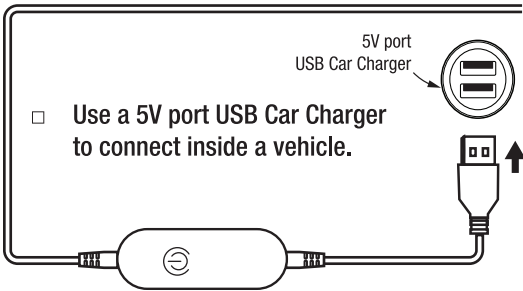
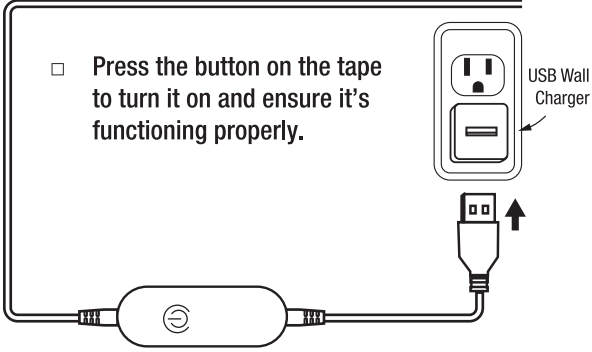
DD

Part	Description	Quantity
AA	5ft. Tape Light	1
BB	RF Remote Control	1
CC	Adhesive Tape Roll	1
DD	Pry Tool	1

Tape Light Installation


1 Connect USB to Power Supply

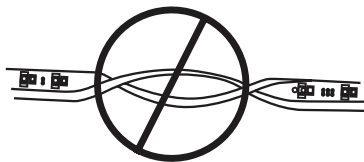
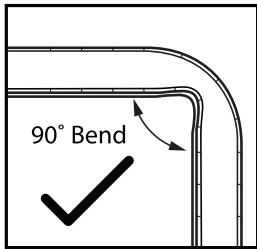
- Connect the USB to a USB Wall Charger (Not Included) as shown in the image below.



2 Prepare the Strip Light

- Clean the mounting area thoroughly (surface must be free of dust, dirt, or grease).
- Avoid areas where the strip light can be pierced which may damage the LEDs.
- Avoid removing and relaying the strip light multiple times as the adhesive may wear off.

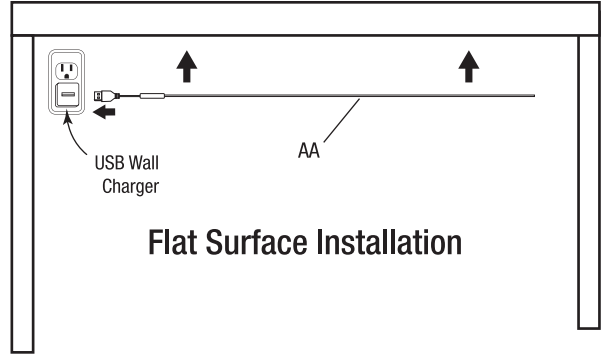
 **NOTE:** Add Note: Avoid making sharp bends with the tape light. Instead, make gradual, rounded turns to prevent damage.




Do not twist the tape light.

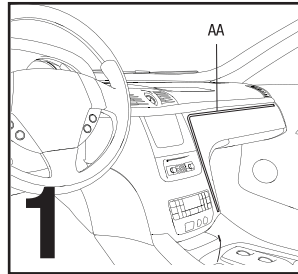
3 Installation

- Take your double sided tape and unroll it slowly. The sticky side should go on the flat underside of the tape light. You can point the light either towards you or away from you, depending on your preference.

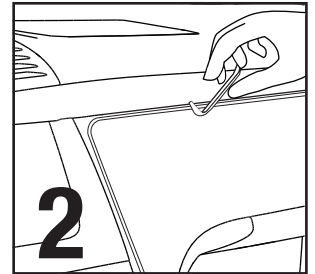


 **WARNING:** This strip light uses permanent tape and may cause surface damage if removed. Not recommended for mounting on brick or concrete. Feit Electric is not responsible for damage to mounted surfaces.

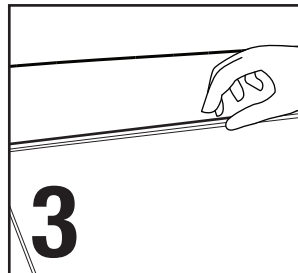
Car Installation



Confirm the installation position. Ensure tape reaches the power source in the car. Do not connect to power yet.



Using the included pry tool, open up the gap. Avoid applying excessive force with the tool to prevent damage.

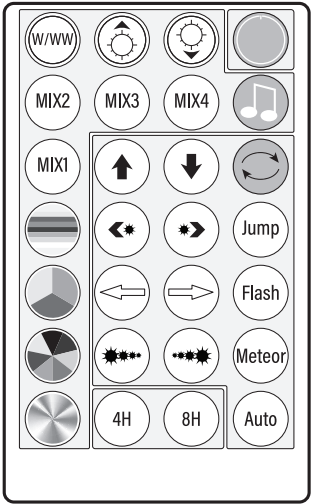


Insert the tape light into the gaps of your dashboard.

Remote Operation

1 Functions of the Remote

- The remote (CC) does not require line-of-sight to operate the lights.
- Remote is using RF so it can operate through walls or other obstacles.



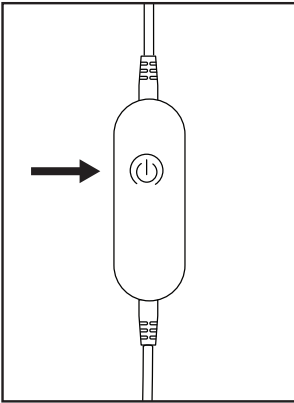
NOTE: Use up and down arrows keys for speed control.

- On/Off
- Music Sync
- Increase Brightness
- Decrease Brightness
- White/Warm White Simulated using RGB
- MIX1 Color Mix 1
- MIX2 Color Mix 2
- MIX3 Color Mix 3
- MIX4 Color Mix 4
- Static Solid Colors
- RGB Mix
- 7 Color Mix
- Smooth Color Mix
- 4H 4 Hour Timer to Turn Off
- Speed Increase
- Speed Decrease
- Effect 1 in Reverse
- Effect 1 Forward
- Effect 2 Reverse
- Effect 2 Forward
- Effect 3 Reverse
- Effect 3 Forward
- Continuous Color Chasing
- Jump Cycles solid colors
- Flash Pulses solid colors
- Meteor Red Trailing LED
- Auto Auto Cycles Through Effects
- 8H 8 Hour Timer to Turn Off

Controller Module Button

- Single Click Cycles through effects and colors.
- Press and hold to turn off.
- If off press once to turn on.

NOTE: Thin COB remembers how you last used it—whether it was on or off, and any colors or effects you had.



Pairing the Tape Light

- Pairing**
- If plugged in, re-plug the tape light that is to be paired.
 - Within 5 seconds press and hold power button on the remote until it flashes 3 times. This indicates that it is now paired.
 - This kit will now operate with the remote used in this procedure. Repeat as desired with other kits and remotes.

- Unpairing**
- Each remote uniquely paired to a kit
- If it's already paired, simply unplug and plug the tape light back in.
 - Within 5 seconds press and hold the power button on the remote.
 - The lights will flash seven (7) times to indicate a successful unpairing.