

# Beldray<sup>est 1872</sup>®

Our **cordless,**  
**powerful & versatile**  
vacuum cleaner



**AIRGILITY MAX**  
**CORDLESS**  
INSTRUCTION MANUAL



[www.beldray.com](http://www.beldray.com)

Please read all of the instructions carefully and retain for future reference.

## **Safety Instructions**

When using electrical appliances, basic safety precautions should always be followed.

Check that the voltage indicated on the rating plate corresponds with that of the local network before connecting the appliance to the mains power supply.

Children aged from 8 years and people with reduced physical, sensory or mental capabilities or lack of experience and knowledge can use this appliance, only if they have been given supervision or instruction concerning use of the appliance in a safe way and understand the hazards involved.

Children should be supervised to ensure that they do not play with the appliance.

Unless they are older than 8 and supervised, children should not perform cleaning or user maintenance.

This appliance is not a toy.

This appliance contains no user serviceable parts. If the power supply cord, plug or any part of the appliance is malfunctioning or if it has been dropped or damaged, only a qualified electrician should carry out repairs. Improper repairs may place the user at risk of harm.

Keep the appliance out of the reach of children.

Keep the appliance out of the reach of children when it is switched on or cooling down.

Keep the appliance away from heat or sharp edges that could cause damage.

Keep the appliance away from other heat emitting appliances.

Keep the appliance free from dust, lint, hair or anything that may reduce the airflow of the appliance.

Do not immerse the appliance in water or any other liquid.

Do not operate the appliance with wet hands.

Do not expose the appliance to rain.

Do not remove from the adaptor from the mains power supply by pulling the cord; switch off and remove the plug by hand.

Do not use the adaptor to recharge non-rechargeable batteries.

Do not use the appliance if it has been dropped or if there are visible signs of damage.

Do not use the appliance for anything other than its intended use.

Do not use any parts/accessories or adaptors other than those supplied with this appliance, as this may cause damage.

Do not use any damaged accessories or adaptors.

Do not use this appliance outdoors.

Do not store the appliance in direct sunlight or in high humidity conditions.

Do not use this appliance if any of the openings are blocked.

Do not use the appliance to pick up flammable liquid, matches, cigarette ends, hot ashes or any hot, burning or smoking objects.

Do not use this appliance to pick up hard, sharp objects such as glass or nails etc.

Do not use the appliance to pick up water or any other liquid, as this poses risk of an electric shock.

The hose should be checked regularly and must not be used if damaged.

Take care when equipping accessories with rotating parts as this could cause entrapment.

Switch off the appliance and disconnect it from the mains power supply before changing or fitting accessories.

Always ensure that the appliance has cooled fully after use before performing any cleaning or user maintenance.

Use of an extension cord with the appliance is not recommended.

Only use the appliance with the power supply unit provided.

This appliance should not be operated by means of an external timer or separate remote control system.

This appliance is intended for domestic use only. It should not be used for commercial purposes.

**Caution:** The extension tube contains electrical connections. Do not use to suck up water. Do not immerse in water for cleaning. The extension tube should be checked regularly and must not be used if damaged.

## Battery Safety

The supply terminals are not to be short-circuited.

In the event of a battery pack leaking, do not allow the liquid to come in contact with the skin or eyes. If contact has been made, wash the affected area with copious amounts of water and seek medical advice.

Secondary cells and batteries need to be charged before use. After extended periods of storage, it may be necessary to charge and discharge the battery pack several times to obtain maximum performance.

Do not leave a battery pack on prolonged charge when not in use.

Do not use any charger other than that specifically provided for use with the appliance.

Do not use any cell or battery which is not designed for use with the appliance.

Keep batteries out of the reach of children.

Do not dispose of batteries in a fire.

Do not dismantle, open or shred battery pack.

Do not expose cells or batteries to heat or fire.

Do not crush, puncture, dismantle or otherwise damage the battery pack.

Do not store above 60 °C.

Avoid storage in direct sunlight.

Do not expose battery pack to heat or fire as they may explode.

Do not subject battery pack to mechanical shock.

Do not dispose of exhausted battery pack in household waste.

To dispose of the exhausted battery pack, take it to a local recycling station. Contact the local government offices for further details.

This appliance is fitted with a 29.6 V 2200 mAh Li-ion rechargeable battery.

## Dos and Don'ts

### Do:

Check that the HEPA filter is kept clear of obstruction.

Make sure that the dust container and HEPA filter are cleaned regularly to preserve suction and prolong the life of the vacuum cleaner.

Clean the dust container and HEPA filter at least every three weeks with clean water to keep the vacuum cleaner working efficiently.

### Don't:

Use the vacuum cleaner without the HEPA filter or dust container in position.

Use the vacuum cleaner to pick up flammable liquid, matches, cigarette ends, hot ashes or any hot, burning or smoking objects.

Use the vacuum cleaner to pick up water or any other liquid, as this poses risk of an electric shock.

## Care and Maintenance

Wipe the external surface of the vacuum cleaner with a soft, damp cloth and allow to dry thoroughly.

Do not use any harsh or abrasive detergents cleaning agents to clean any part of the vacuum cleaner.

Keep the HEPA filter clean and replace when it becomes worn.

## Getting Started

Remove the vacuum cleaner from the box.

Remove any packaging from the vacuum cleaner.

Place the packaging inside the box and either store or dispose of safely.

### In the Box

Airgility Max Cordless

Extension tube

Floor brush

2 in 1 crevice and brush tool

Mains power adaptor

Battery pack

Instruction manual

### Features

29.6 V removable Li-ion battery

5.5 hours charge time

30-50 minutes operating time

2 speed settings

1.2 L dust container

Motorised LED floor brush

Includes 2 in 1 crevice and brush tool

Washable HEPA filter

## Description of Parts



- |                                     |                                       |
|-------------------------------------|---------------------------------------|
| 1. Airgility Max Cordless main unit | 11. Dust container                    |
| 2. Air inlet                        | 12. Dust container base release latch |
| 3. Extension tube                   | 13. Filter cone                       |
| 4. Extension tube release button    | 14. HEPA filter                       |
| 5. Floor brush                      | 15. Battery pack                      |
| 6. Floor brush release button       | 16. Battery release catch             |
| 7. Brush bar                        | 17. Charging port                     |
| 8. Brush bar release tab            | 18. LED indicator light               |
| 9. 2 in 1 crevice and brush tool    | 19. Storage hook                      |
| 10. Power trigger                   |                                       |

## Instructions for Use

### Before First Use

Before using the vacuum cleaner for the first time, clean the exterior surface with a soft, damp cloth and dry thoroughly.

Do not immerse the vacuum cleaner in water or any other liquid.

## Charging the Airgility Max Cordless

Before first use, the vacuum cleaner must be charged for approx. 5.5 hours. Subsequent charging times will vary dependent upon use. If the vacuum cleaner battery becomes completely drained during use, it may take up to 5.5 hours to fully recharge.

The battery pack must be fitted onto the vacuum cleaner main unit during charging; do not charge the battery pack separately.

**STEP 1:** Before connecting to the mains power supply, attach the battery pack by aligning it with the vacuum cleaner main unit and sliding into place until it clicks.

**STEP 2:** Connect the mains power adaptor to the charging port on the battery pack.

**STEP 3:** Plug the mains power adaptor into the mains power supply; the LED indicator light will flash during charging and then remain illuminated once the battery is fully charged.

**STEP 4:** Unplug the mains power adaptor from the mains power supply once the battery is fully charged. Disconnect the mains power adaptor from the charging port on the battery pack.

**Note:** Whilst charging, the battery pack may become warm. The battery pack must be inserted into the vacuum cleaner to charge.

**Warning:** Do not use any mains power adaptor other than that supplied. Using an alternative will increase the risk of damage to the appliance or injury to the user.

## Using the Airgility Max Cordless

**STEP 1:** Check that the vacuum cleaner is disconnected from the mains power adaptor after unplugging it from the mains power supply.

**STEP 2:** Turn on the vacuum cleaner by pressing the power trigger; press once for the minimum power setting, press twice to use the maximum power setting.

**STEP 3:** To turn off the vacuum cleaner, press the power trigger.

**Warning:** Do not use the vacuum cleaner without the HEPA filter and filter cone in position. The dust container must be closed before use. Clean the HEPA filter regularly to preserve the suction of the vacuum cleaner.

## Using the Extension Tube and Floor Brush

The extension tube can be fitted onto the air inlet to extend reach, ideal for floor-to-ceiling cleaning.

**STEP 1:** Fit the extension tube onto the air inlet by aligning the pins and carefully pushing the extension tube towards the vacuum cleaner main unit until it clicks into position. To release the extension tube, press the extension tube release button and pull it away from the vacuum cleaner main unit.

**STEP 2:** Attach the floor brush by aligning the pins on the floor brush with the bottom of the extension tube. Carefully push together to secure into place. To release the floor

brush, press the floor brush release button and pull it away from the extension tube.

**STEP 3:** Turn on the vacuum cleaner by pressing the power trigger.

## Using the 2 in 1 Crevice and Brush Tool

**STEP 1:** If required, fit the extension tube onto the air inlet following the instructions in the section entitled 'Using the Extension Tube and Floor Brush'.

**STEP 2:** Push the 2 in 1 crevice and brush tool onto the end of the extension tube. If no extension is required, push the crevice tool directly onto the air inlet until secure.

**STEP 3:** Slide the brush back to use as a crevice tool, ideal for removing dust and dirt from corners and recesses. Slide the brush forward to use as a brush tool, perfect for cleaning upholstery and fabrics.

**STEP 4:** To remove the 2 in 1 crevice and brush tool, pull it firmly away from the end of the extension tube or the air inlet.

## Emptying the Dust Container

Before emptying the dust container, check that the vacuum cleaner is switched off and any attachments have been removed from the air inlet.

It is recommended to empty the dust container outdoors.

**STEP 1:** Whilst securely holding the vacuum cleaner main unit, press the dust container base release latch. Empty the dust container slowly and carefully to reduce the amount of dust released back into the atmosphere.

**STEP 2:** Close the dust container by pushing the base closed until the dust container base release latch locks back into position.

**Note:** Always close the dust container base before using the vacuum cleaner.

## Cleaning the HEPA filter

The HEPA filter can only be accessed when the dust container is open.

**STEP 1:** Open and empty the dust container following the instructions in the section entitled 'Emptying the Dust Container'.

**STEP 2:** Once the dust container is empty, remove the filter cone by rotating it in an anticlockwise direction and lifting it out of the vacuum cleaner main unit.

**STEP 3:** Carefully lift the HEPA filter out of the dust container. Shake the HEPA filter until the majority of the dust has been removed, then rinse under clean, warm water and allow to dry naturally.

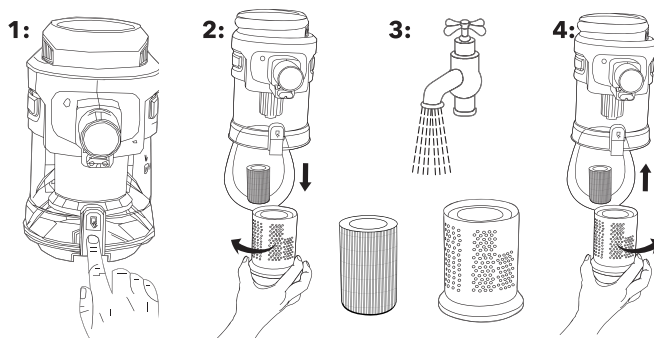
**STEP 4:** When the HEPA filter is fully dry, place it back into the dust container. Replace the filter cone by aligning the indents on the filter cone with those on the top of the HEPA filter. Secure into place by rotating the filter cone in a clockwise direction.

**STEP 5:** Close the dust container by pushing it firmly shut until it clicks into position.



**Note:** Do not clean the HEPA filter using detergents or use external heat sources such as radiators to dry them.

**Warning:** Do not reassemble or use the vacuum cleaner until the HEPA filter is fully dry, as this could cause damage.  
Do not use the vacuum cleaner without the HEPA filter or filter cone in position, as this could cause damage.



### Cleaning the Floor Brush

The floor brush has a removable brush bar for easy cleaning.

**STEP 1:** Switch off the vacuum cleaner and remove the floor brush by pressing the floor brush release button and pulling it away from the extension tube.

**STEP 2:** Slide the brush bar release tab to release the brush bar and lift it out of the floor brush.

**STEP 3:** Remove any built-up dust, debris and hair from the brush bar and floor brush.

**STEP 4:** Replace the brush bar into the floor brush by aligning the tabs and sliding the brush bar release tab to the side, allowing the brush bar to fit into place

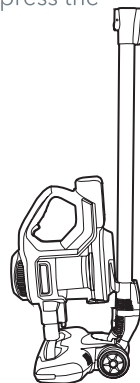
### Removing the Rechargeable Battery Pack

The battery pack can be removed from the vacuum cleaner main unit by pressing the battery release catch and sliding the battery pack out of the vacuum cleaner main unit. To refit the battery pack, re-align it with the vacuum cleaner main unit and press the release catch down whilst sliding the battery pack into place until it clicks.

### Storage

Check that the vacuum cleaner is cool, clean and dry before storing in a cool, dry place.

The vacuum cleaner can be neatly stored away after use by securing the vacuum cleaner main unit onto the extension tube using the storage hook.



## Troubleshooting

Symptom	Possible Cause	Solution
The vacuum cleaner will not charge.	The mains power adaptor is not securely connected.	Connect the mains power adaptor to the charging port on the battery pack and check that the battery pack is correctly inserted into the vacuum cleaner main unit, following the instructions in the section entitled 'Charging the Airgility Max Cordless'.
The suction is poor.	<p>The air inlet is blocked.</p> <p>The dust container is almost full.</p> <p>The HEPA filter is blocked.</p>	<p>Disconnect the attachment and clear the blockage.</p> <p>Empty the dust container following the instructions in the section entitled 'Emptying the Dust Container'.</p> <p>Clean the HEPA filter following the instructions in the section entitled 'Cleaning the HEPA Filter'.</p>
The brush bar is not rotating.	The brush bar is blocked due to built-up hair, dust and debris.	Clean the floor brush following the instructions in the section entitled 'Cleaning the Floor Brush'.

## Specifications

Product code: BEL0813NRG

Battery: 29.6 V 2200 mAh Li-ion

Adaptor Input: 100-240 V ~ 50/60 Hz

Adaptor Output: 34 V 400 mA

Dust tank capacity: 1.2 L

## **UP Global Sourcing UK Ltd., Victoria Street, Manchester OL9 0DD. UK.**

If this product does not reach you in an acceptable condition please contact our Customer Services Department by one of the following methods:

Telephone: +44 (0)333 577 9820\*

\*Telephone lines are open Monday-Friday, 9 am-5 pm (Closed Bank Holidays)

Email: [customersupport@beldray.com](mailto:customersupport@beldray.com)

Fax: 0161 628 2126

Please have your delivery note to hand as details from it will be required.

If you wish to return this product please return it to the retailer from where it was purchased with your receipt (subject to their terms and conditions).

### **Guarantee**

All products purchased as new carry a manufacturer's guarantee; the time period of the guarantee will vary dependent upon the product. Where reasonable proof of purchase can be provided, Beldray will provide a standard 12 month guarantee with the retailer from the date of purchase. This is only applicable when products have been used as instructed for their intended, domestic use. Any misuse or dismantling of products will invalidate any guarantee.

Under the guarantee, we undertake to repair or replace free of any charge any parts found to be defective. In the event that we cannot provide an exact replacement, a similar product will be offered or the cost refunded. Any damages from daily wear and tear are not covered by this guarantee, nor are consumables such as plugs, fuses etc.

Please note that the above terms and conditions may be updated from time to time and we therefore recommend that you check these each time you revisit the website.

Nothing in this guarantee or in the instructions relating to this product excludes, restricts or otherwise affects your statutory rights.



The crossed out wheellie bin symbol on this item indicates that this appliance needs to be disposed of in an environmentally friendly way when it becomes of no further use or has worn out. Contact your local authority for details of where to take the item for recycling.

## CONGRATULATIONS ON YOUR PURCHASE!

To be eligible for the extended 3 year guarantee, go to **<http://guarantee.upgs.com/beldray>** and register your product.

The Beldray brand stands for reliability, trust and consumer loyalty. Our fantastic range of products includes everything that you need to keep your home cosy and warm.

View our full range of household essentials at **[www.beldray.com](http://www.beldray.com)**

**Beldray**  
at home

Manufactured by:

UP Global Sourcing UK Ltd.,  
Victoria Street, Manchester OL9 0DD. UK  
+44 (0)333 577 9820

[customersupport@beldray.com](mailto:customersupport@beldray.com)

©Beldray Trademark. All rights reserved.

Please retain instructions for future reference.

Made in China.

CD040719/MD000000/V1



# Important safety

Please read carefully

Please retain instructions for future reference.

## SAFETY INSTRUCTIONS

- When using electrical appliances, basic safety precautions should always be followed.
- This appliance can be used by children aged from 8 years and above and persons with reduced physical, sensory or mental capabilities and knowledge, if they have been supervised/instructed and understand the hazards involved.
- Children shall not play with the appliance.
- Children should not perform cleaning or user maintenance, unless they are older than 8 and supervised.
- This appliance is not a toy.
- If the power supply cord, plug or any part of the appliance is malfunctioning or if it has been dropped or damaged, cease using the product immediately to avoid potential injury.
- This appliance contains no user serviceable parts, only a qualified electrician should carry out repairs. Improper repairs may place the user at risk of harm.
- Keep the appliance and its power supply cord out of the reach of children.
- Keep the appliance out of the reach of children when it is switched on or cooling down.
- Keep the appliance and its power supply cord away from heat or sharp edges that could cause damage.
- Keep the appliance away from other heat emitting appliances.
- Keep the appliance free from dust, lint, hair or anything that may reduce the airflow of the appliance.
- Do not immerse the electrical components of the appliance in water or any other liquid.
- Do not operate the appliance with wet hands or if any connections are wet.
- Do not expose the appliance to rain.
- Do not leave the appliance unattended whilst connected to the mains power supply.
- Do not remove from the mains power supply by pulling the cord; switch off and remove the plug by hand.
- Do not pull or carry the appliance by its power supply cord.
- Do not use the appliance if it has been dropped or if there are visible signs of damage.
- Do not use the appliance for anything other than its intended use.
- Do not use any parts/accessories other than the parts supplied with this appliance, as this may cause damage.
- Do not use this appliance outdoors.
- Do not store the appliance in direct sunlight or in high humidity conditions.
- Do not use this appliance if any of the openings are blocked.
- Do not use the appliance to pick up flammable liquid, matches, cigarette ends, hot ashes or any hot, burning or smoking objects.
- Do not use this appliance to pick up hard, sharp objects, such as glass or nails etc.
- Do not use the appliance to pick up water or any other liquid, as this poses risk of an electric shock.
- Take care when equipping accessories with rotating parts, as this could cause entrapment.
- Use of an extension cord with the appliance is not recommended.
- This appliance should not be operated by means of an external timer or separate remote control system.
- This appliance is intended for domestic use only. It should not be used for commercial purposes.



**EN | Disposal of Waste Batteries and Electrical and Electronic Equipment**



This product is labelled with this crossed out wheel bin symbol in accordance with European Directive 2012/19/EC to indicate that it must not be disposed of with your other household waste. Due to the presence of hazardous substances, mixtures or components, electrical and electronic devices that are not subject to selective sorting are potentially dangerous to the environment and human health. Please check your local city office or waste disposal service for the return and recycling of this product.

Manufactured by:  
Ultimate Products UK Ltd.,  
Victoria Street, Manchester OL9 0DD. **UK.**  
Ultimate Products Europe Ltd.,  
19 Baggot Street Lower, Dublin D02 X658. **ROI.**

**MADE IN CHINA.**

CD151124/MD000000/V1