

CONNECT PRO VESA Station Update

OVERVIEW

As of June 2023 CONNECT PRO VESA Station has made a few updates with powering options for the VESA Station. There are now two methods of wiring and powering the VESA Station. Follow the guide below for correct wiring methods.

Method 1 (AC Power Outlets)

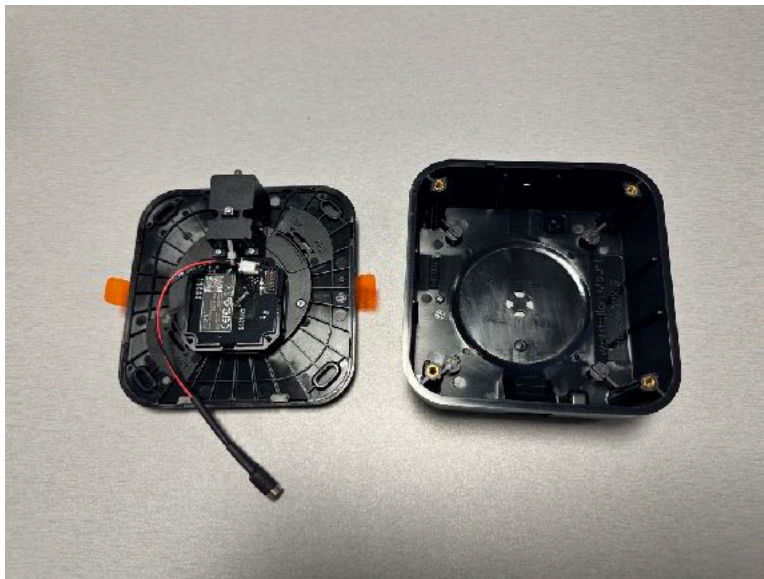
From the factory now the VESA Station comes designed to plug directly into an AC Power outlet using the provided 24V Power Supply.

1. Remove the VESA Station and Provided Power Supply from the box.





2. Remove the orange adhesive tabs holding the VESA Station together and separate the two halves.



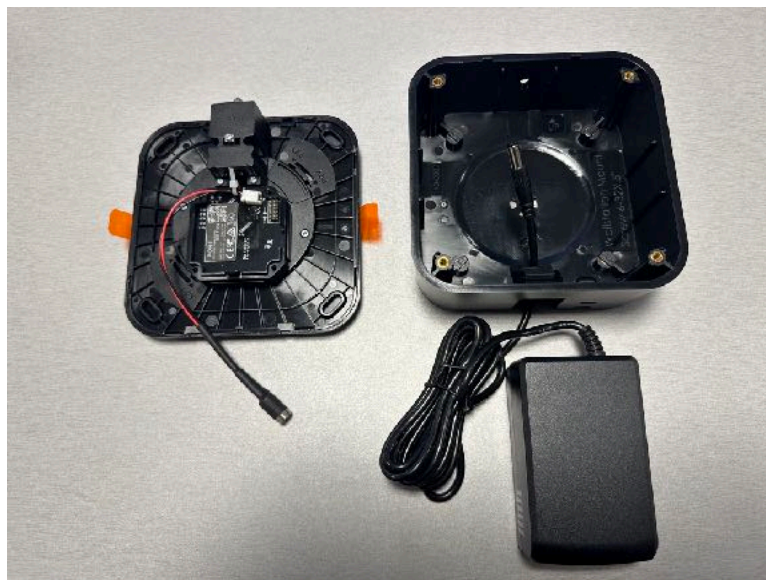
3. Remove the rubber grommet from the bottom of the VESA Station



4. Place the Rubber Grommet around the 24V Power Supply cable with the hook of the grommet facing towards the barrel connector.



5. Reinstall the grommet and barrel connector through the VESA Station making sure to fully seat the grommet back into place.



6. Attach the barrel connector to the VESA station and install the provided screws to secure the station to the mounting box.



Method 2 (2 wire/ 12-24V DC)

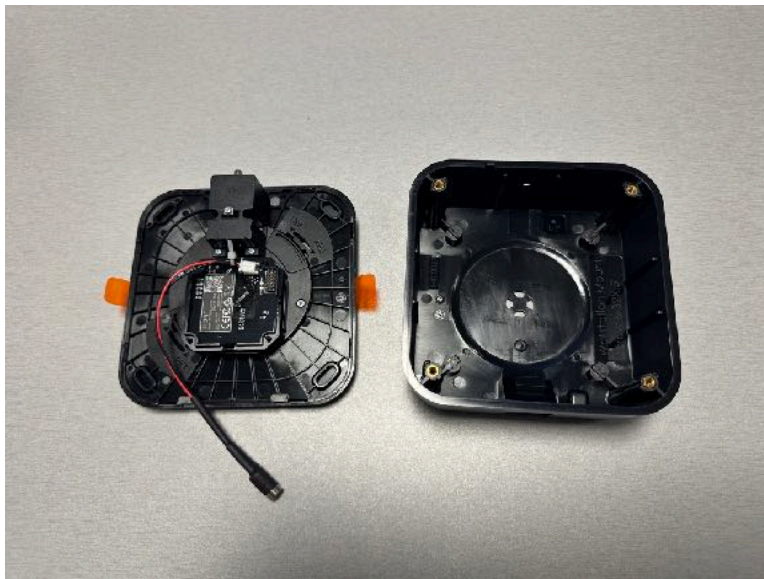
Provided with the VESA Station now is the option to attach and power the station via a 2 wire phoenix connector. Follow the steps below to wire the VESA Station to a 12-24V vehicle power solution.

1. Remove the VESA Station and Provided Power Supply from the box.





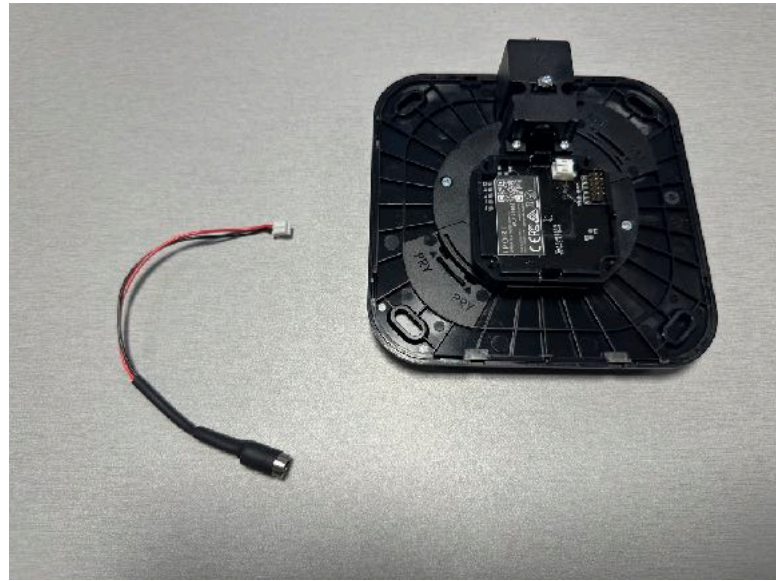
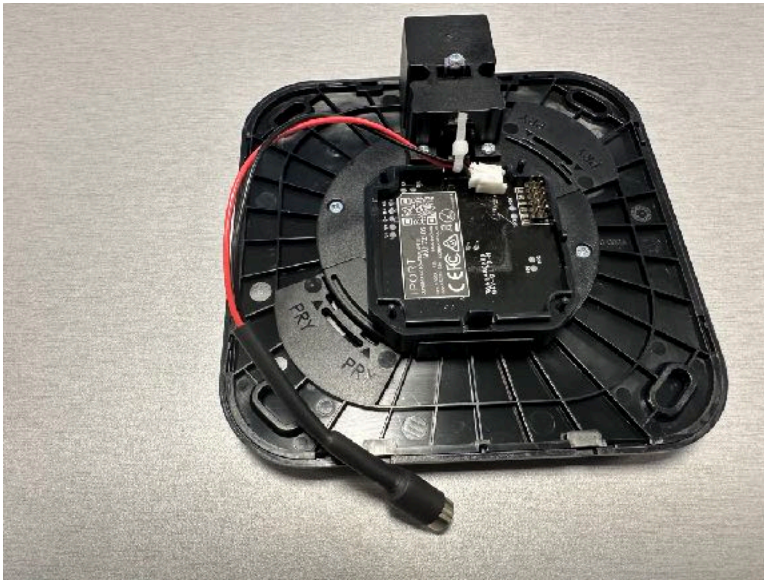
2. Remove the orange adhesive tabs holding the VESA Station together and separate the two halves.



3. Remove rubber grommet from the bottom of the VESA Station



4. Cut the zip tie holding the DC barrel connector into place and remove the cable.



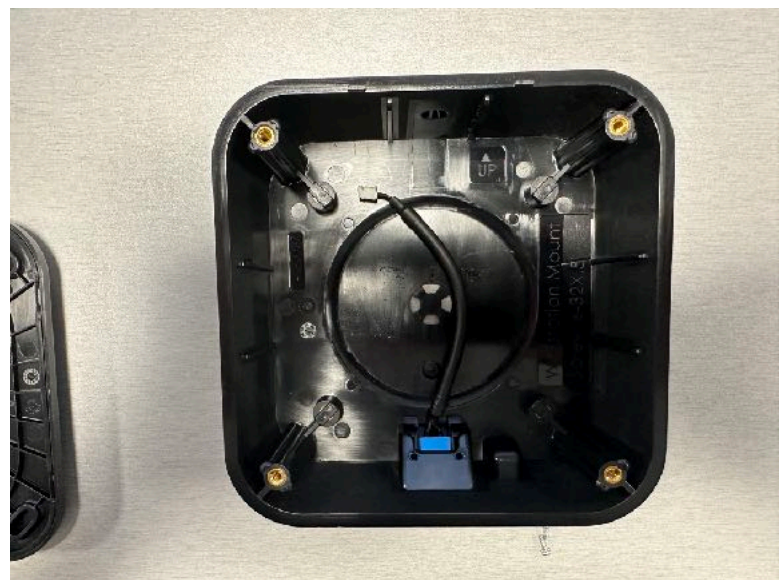
5. Remove the Blue phoenix connector, 2 small screws and phoenix connector from the power supply box.



6. Attach the Phoenix connector cover on the the blue phoenix connector making sure the holes line up with the connector and the cover.



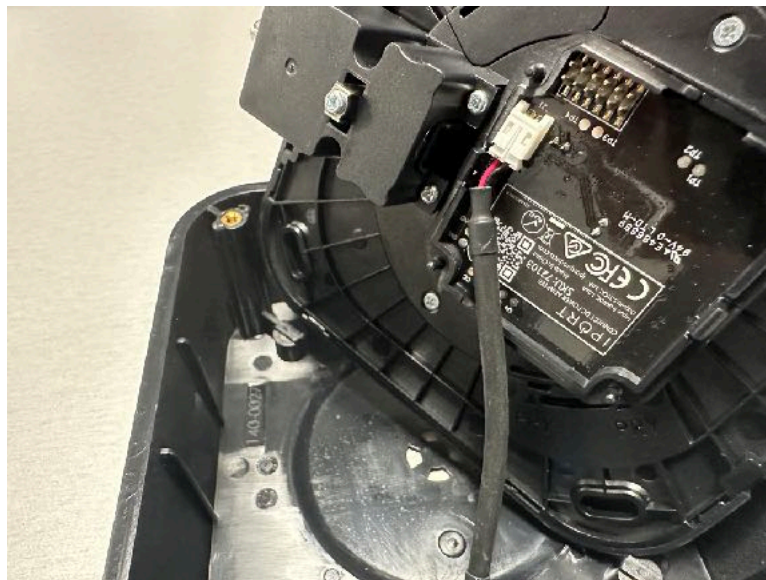
7. Place the Cable into the VESA Mount and turn the mount face up.



8. Secure the Phoenix cover with the two small Philips screws.



9. Attach the White Molex connector onto the VESA Station board making sure the securely seat the connector before finishing installation.



10. Install the provided screws to secure the station to the mounting box remembering to first remove the VESA Station Cover. Now attached the VESA Station using 2 wire cable to the vehicles Positive and Ground 12-24V system.