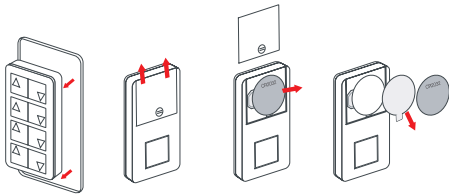
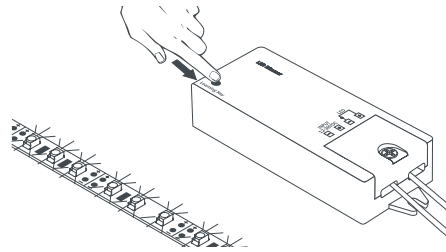


Pairing Receiver (T-Q-WR96) to Wireless Controller

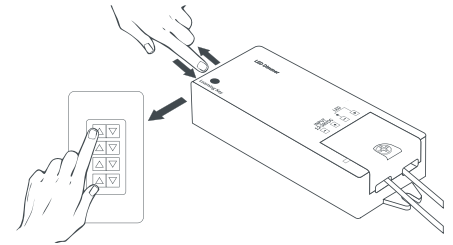
Pairing Instructions to one Zone



1. Remove Controller from back plate, slide battery compartment open, remove battery, and discard clear plastic tab. Reinsert battery, replace cover.



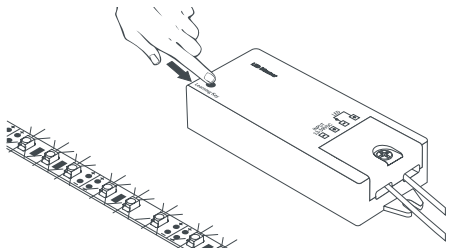
2. Each time a new Receiver is set up for the first time, clear the memory by pressing and holding the "Learn" button until the lights blink.



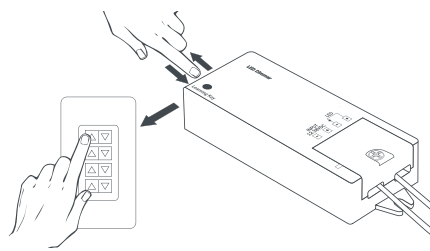
3. Very quickly, click and release the "Learn" button and, within 5 seconds, quickly click and release the "Up Arrow" button on the Controller for any of the Zones. When lights blink, Controller and Receiver are paired.

NOTE: when pairing additional controllers to the same receiver, DO NOT clear the memory each time.

Pairing Instructions to additional Zones



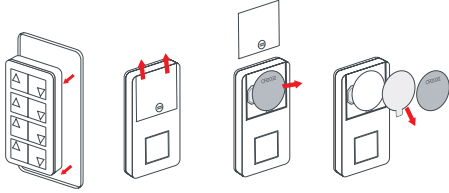
1. When pairing additional Zones to the same Controller, clear the memory on the new Receiver for the next Zone by pressing and holding the "Learn" button until the lights blink.



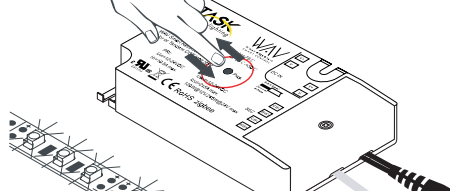
2. Very quickly, click and release the "Learn" button and, within 5 seconds, quickly click and release one of the "Up Arrow" buttons on the Controller for any of the Zones. When lights blink, Controller and Receiver are paired. Repeat process until Zones are paired as desired.

Pairing WAV Smart Receiver (T-TWAV-WR-120) to Wireless Controller

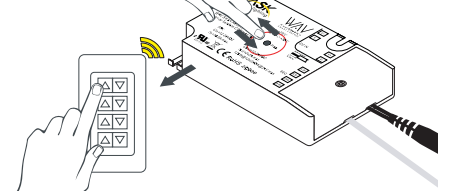
Pairing Instructions – if pairing to a Smart Home Hub, visit www.Vimeo.com/Channels/WAVSmartControl



1. Remove Controller from back plate, slide battery compartment open, remove battery, and discard clear plastic tab. Reinsert battery, replace cover.



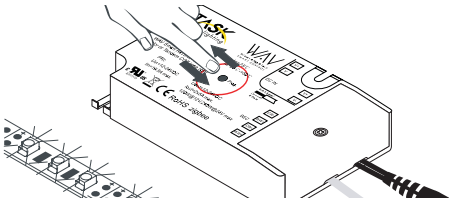
2. Each time a new WAV Smart Receiver is set up for the first time, clear the memory by pressing and holding the "Prog" button until the lights blink.



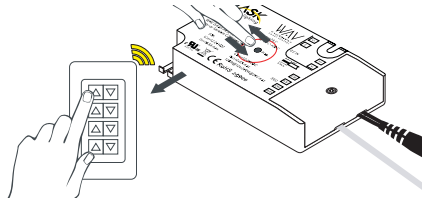
3. Very quickly, click and release the "Prog" button and, within 5 seconds, quickly click and release the "Up Arrow" button on the Controller for any of the Zones. When lights blink, Controller and WAV Smart Receiver are paired.

NOTE: when pairing additional controllers to the same receiver, DO NOT clear the memory each time.

Pairing Instructions to additional Zones



1. When pairing additional Zones to the same Controller, clear the memory on the new Receiver for the next Zone by pressing and holding the "Prog" button until the lights blink.

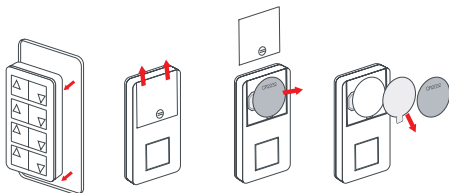


2. Very quickly, click and release the "Prog" button and, within 5 seconds, quickly click and release one of the "Up Arrow" buttons on the Controller for any of the Zones. When lights blink, Controller and WAV Smart Receiver are paired. Repeat process until Zones are paired as desired.

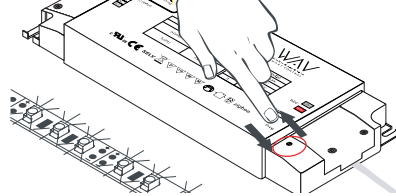
Pairing WAV Smart Receiver / Power Supply (T-TWAV-60W-PSR) to Wireless Controller

Pairing Instructions – if pairing to a Smart Home Hub, visit www.Vimeo.com/Channels/WAVSmartControl

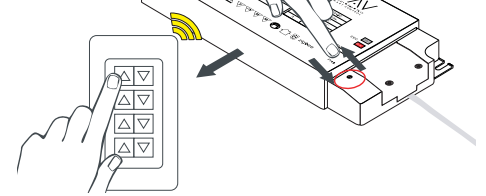
Pairing Instructions – if pairing to a Smart Home Hub, visit www.Vimeo.com/Channels/WAVSmartControl



1. Remove Controller from back plate, slide battery compartment open, remove battery, and discard clear plastic tab. Reinsert battery, replace cover.



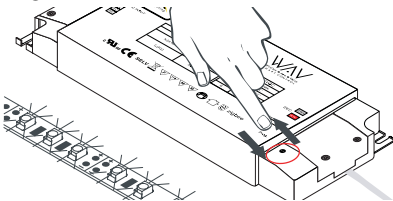
2. Each time a new WAV Smart Receiver is set up for the first time, clear the memory by pressing and holding the "Prog" button until the lights blink.



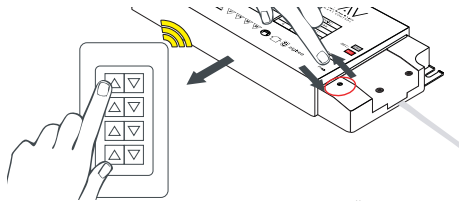
3. Very quickly, click and release the "Prog" button and, within 5 seconds, quickly click and release the "Up Arrow" button on the Controller for any of the Zones. When lights blink, Controller and WAV Smart Receiver are paired.

NOTE: when pairing additional controllers to the same receiver, DO NOT clear the memory each time.

Pairing Instructions to additional Zones



1. When pairing additional Zones to the same Controller, clear the memory on the new Receiver for the next Zone by pressing and holding the "Prog" button until the lights blink.



2. Very quickly, click and release the "Prog" button and, within 5 seconds, quickly click and release one of the "Up Arrow" buttons on the Controller for any of the Zones. When lights blink, Controller and WAV Smart Receiver are paired. Repeat process until Zones are paired as desired.