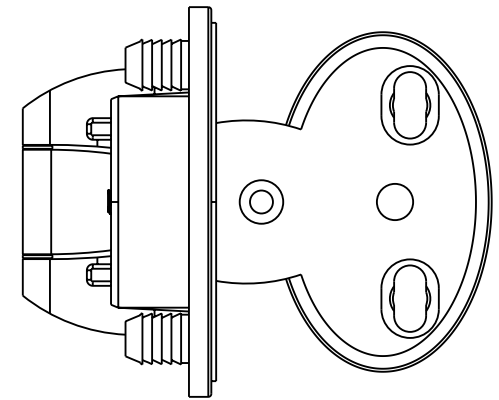
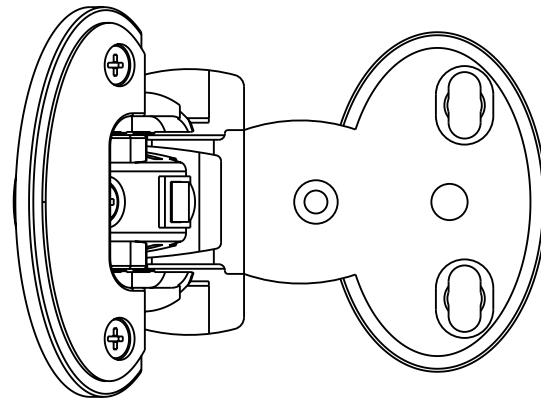
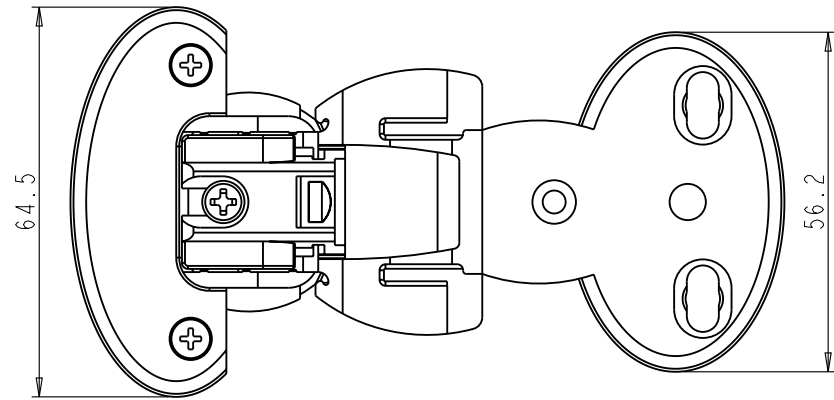
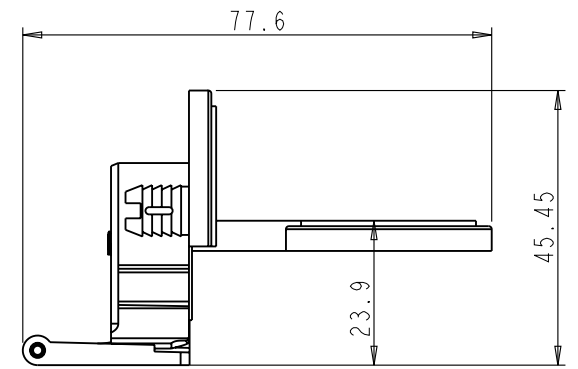
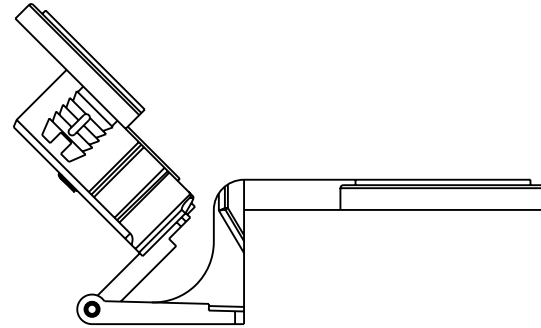
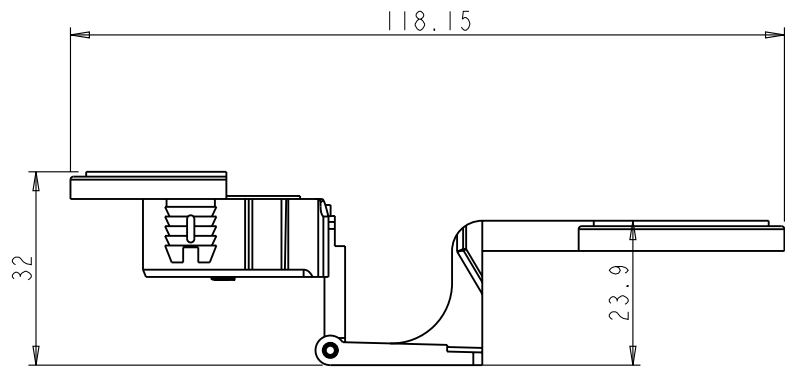


Bills of Material:

12	DOWEL-SCREW	Steel	2			PART	2
11	PLASTIC-NUT	Plastic	2			PART	2
10	SCREW	Steel	1			PART	2
9	DOOR-BASE	Zinc	1			PART	2
8	PIN	Steel	1			PART	2
7	BUSHING	Nylon	2			PART	2
6	SPRING	STEEL	1			PART	3
5	BLOCK	Nylon	1			PART	3
4	ARM	Zinc	1			PART	3
3	ARM-ASSY	Assembly	1			ASSEMBLY	2
2	WALL-BASE	Zinc	1			PART	2
1	HR0086	Assembly	1			ASSEMBLY	1
NO.	ITEM#	MATERIAL	QTY	UNIT	TOTLE	TYPE	ASSY
				WEIGHT	LEVEL		

	ITEM#	HR0086		MATERIAL:
	FINISH:			WEIGHT: 128 g
PROPRIETARY AND CONFIDENTIAL THE INFORMATION CONTAINED IN THIS DRAWING IS THE SOLE PROPERTY OF HARDWARE RESOURCES INC. ANY REPRODUCTION IN PART OR AS A WHOLE WITHOUT THE WRITTEN PERMISSION OF HARDWARE RESOURCES INC. IS PROHIBITED.	TOLERANCE UNLESS OTHERWISE SPECIFIED:	UNIT:	DRAWN BY:	DATE:
	X: MM ±0.20	SIZE:	<i>alan.liu</i>	DATE:
	X.X: MM ±0.10		CHECKED BY:	DATE:
	X.XX: MM ±0.05		APPROVED BY:	DATE:
	ANGULAR: ±0.5°			
	DO NOT SCALE DRAWING			

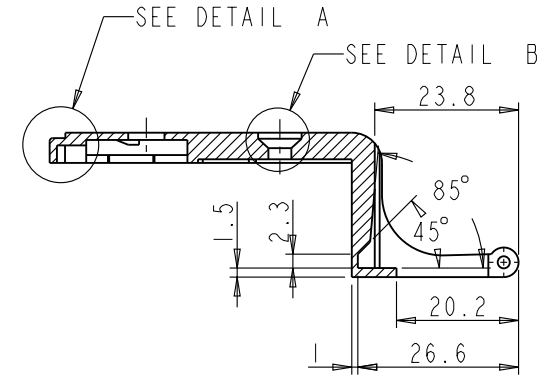
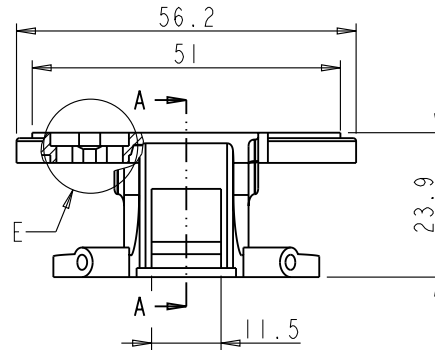
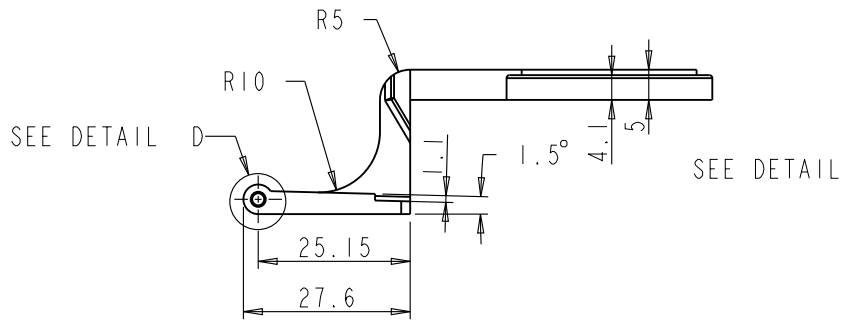
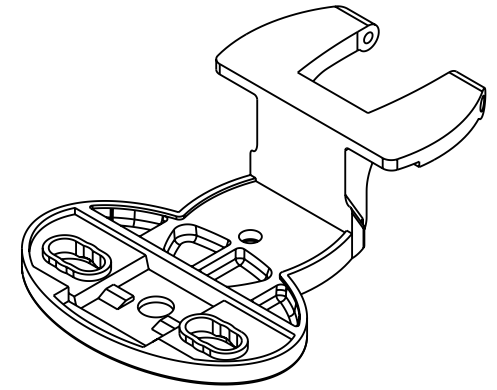
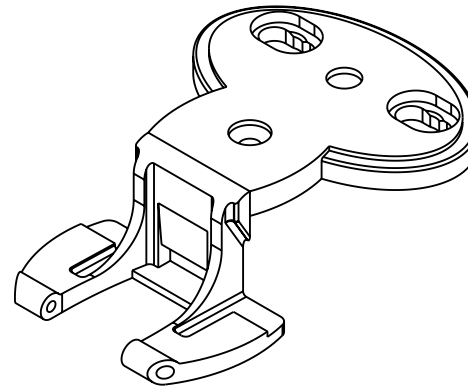
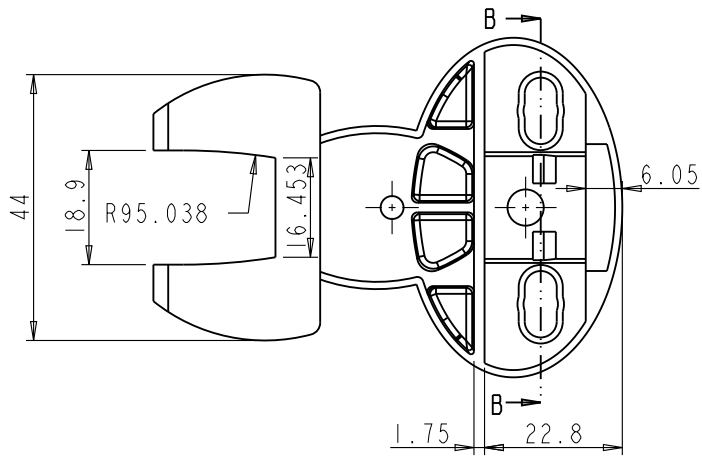


OPEN STATUS

HALF-OPEN STATUS

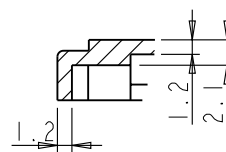
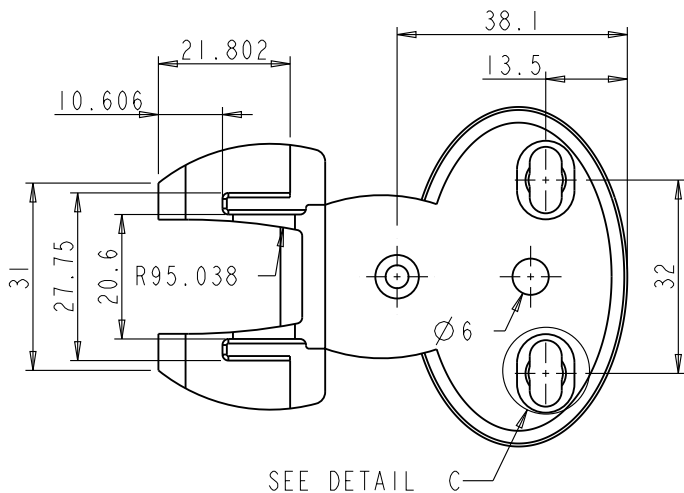
CLOSED STATUS

	ITEM#: HR0086		MATERIAL:	
	FINISH:		WEIGHT: 128 g	
PROPRIETARY AND CONFIDENTIAL THE INFORMATION CONTAINED IN THIS DRAWING IS THE SOLE PROPERTY OF HARDWARE RESOURCES INC. ANY REPRODUCTION IN PART OR AS A WHOLE WITHOUT THE WRITTEN PERMISSION OF HARDWARE RESOURCES INC. IS PROHIBITED.	TOLERANCE UNLESS OTHERWISE SPECIFIED:		PROJECTION:	
	X: MM ±0.20	UNIT:	DRAWN BY: <i>alan.liu</i>	
	X.X: MM ±0.10	SIZE:	CHECKED BY:	
	X.XX: MM ±0.05		APPROVED BY:	
ANGULAR: ±0.5°			DATE:	
DO NOT SCALE DRAWING			DATE:	

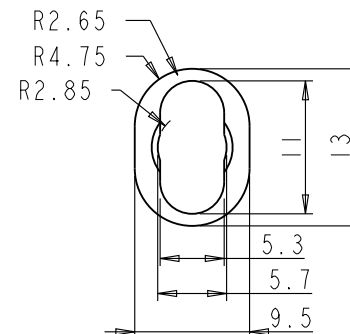


SECTION B-B

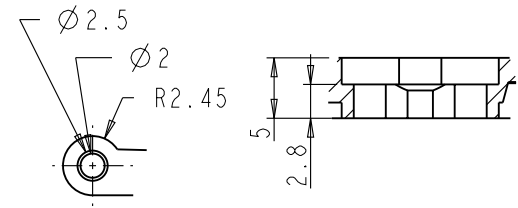
SECTION A-A



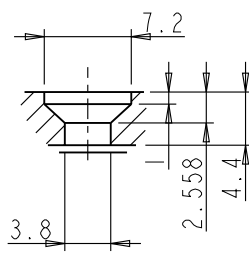
DETAIL A
SCALE 8:5



DETAIL C
SCALE 8:5



DETAIL D
SCALE 8:5

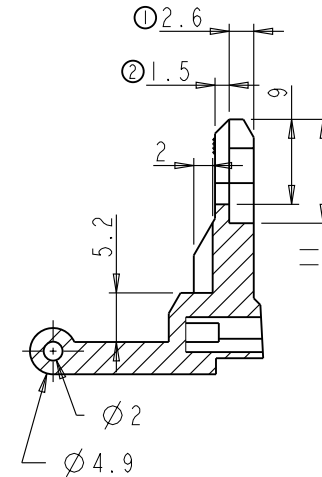
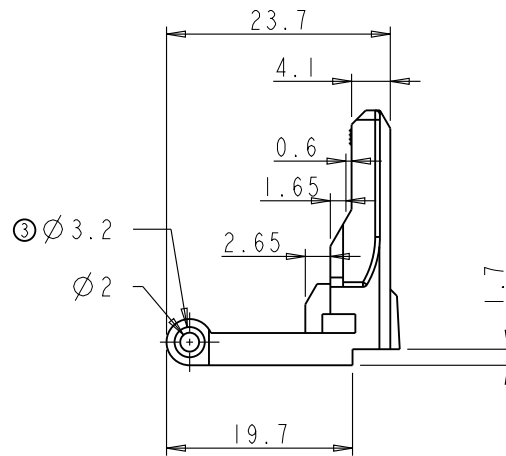
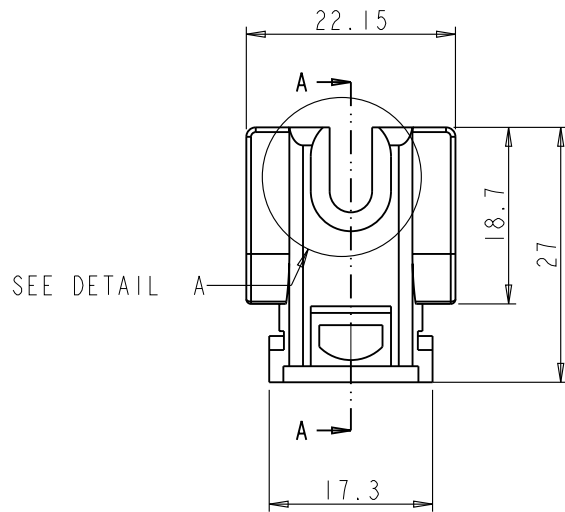


DETAIL B
SCALE 8:5

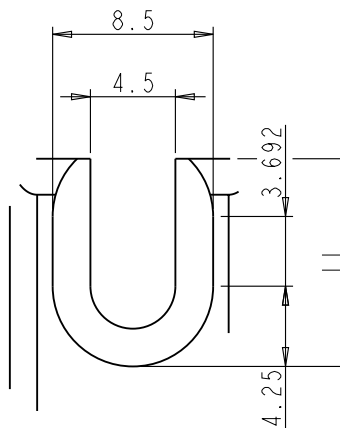
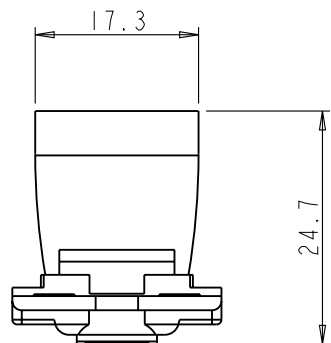
DETAIL E
SCALE 8:5

	ITEM:	WALL-BASE		MATERIAL:	Zinc
	FINISH:			WEIGHT:	g
PROPRIETARY AND CONFIDENTIAL THE INFORMATION CONTAINED IN THIS DRAWING IS THE SOLE PROPERTY OF HARDWARE RESOURCES INC. ANY REPRODUCTION IN PART OR AS A WHOLE WITHOUT THE WRITTEN PERMISSION OF HARDWARE RESOURCES INC. IS PROHIBITED.	TOLERANCE UNLESS OTHERWISE SPECIFIED: X: MM ±0.20 XX: MM ±0.10 XXX: MM ±0.05 ANGULAR: ±0.5° DO NOT SCALE DRAWING	UNIT:	DRAWN BY:	DATE:	
		SIZE:	CHECKED BY:	DATE:	
			APPROVED BY:	DATE:	

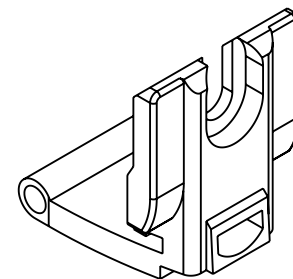
NO.	DESCRIPTION	NAME	DATE
1	NEW RELEASE	<i>Alan Liu</i>	2011-03-03
2	Dimension ① was changed from 2.7 to 2.6 Added dimension ②	<i>Alan Liu</i>	2011-04-08
2	Add dimension ③. Make it match with related place on Bushing	<i>Alan Liu</i>	2011-08-18



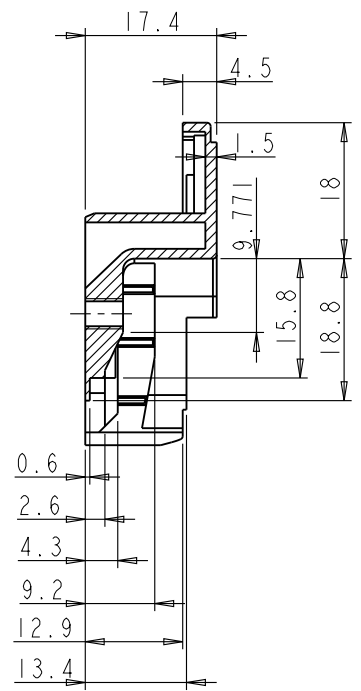
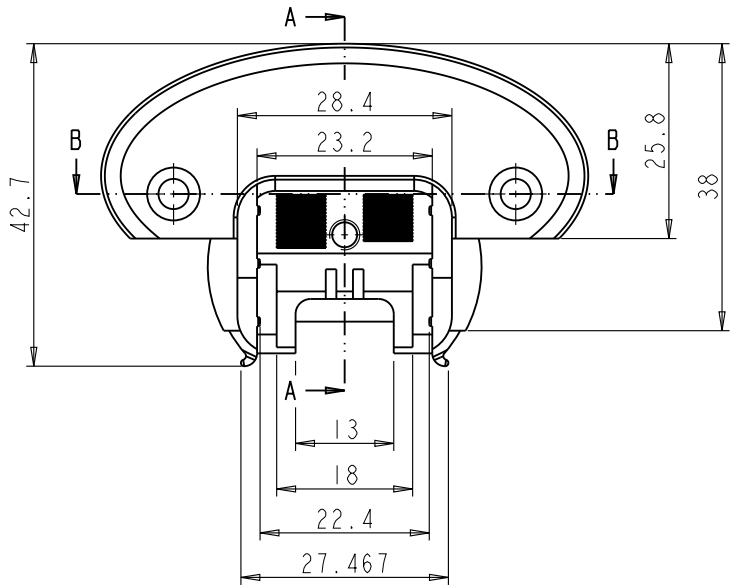
SECTION A-A



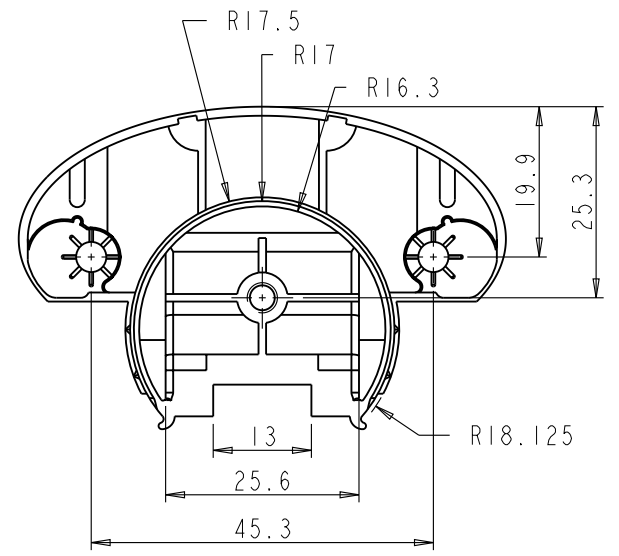
DETAIL A
SCALE 5:2



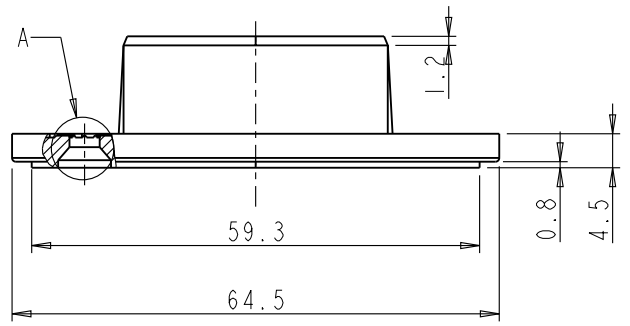
hardware resources	ITEM: ARM		MATERIAL: Zinc		
	FINISH:		WEIGHT: 9		
PROPRIETARY AND CONFIDENTIAL THE INFORMATION CONTAINED IN THIS DRAWING IS THE SOLE PROPERTY OF HARDWARE RESOURCES INC. ANY REPRODUCTION IN PART OR AS A WHOLE WITHOUT THE WRITTEN PERMISSION OF HARDWARE RESOURCES INC. IS PROHIBITED.	TOLERANCE UNLESS OTHERWISE SPECIFIED: X: MM ±0.20 XX: MM ±0.10 XXX: MM ±0.05 ANGULAR: ±0.5° DO NOT SCALE DRAWING		UNIT: SIZE:	DRAWN BY: <i>alan liu</i> CHECKED BY: APPROVED BY:	DATE: DATE: DATE:
	PROJECTION:				



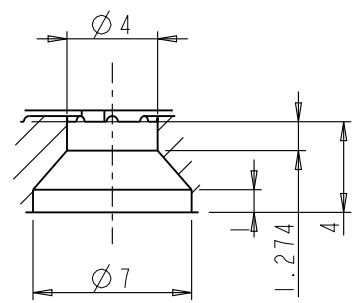
SECTION A-A



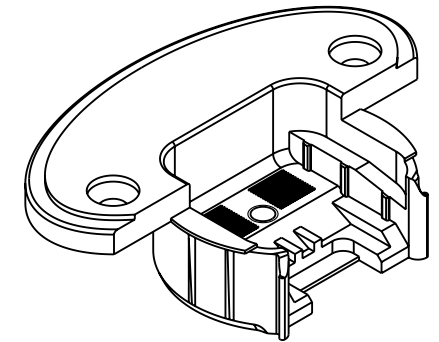
SEE DETAIL



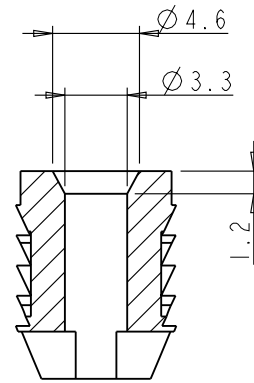
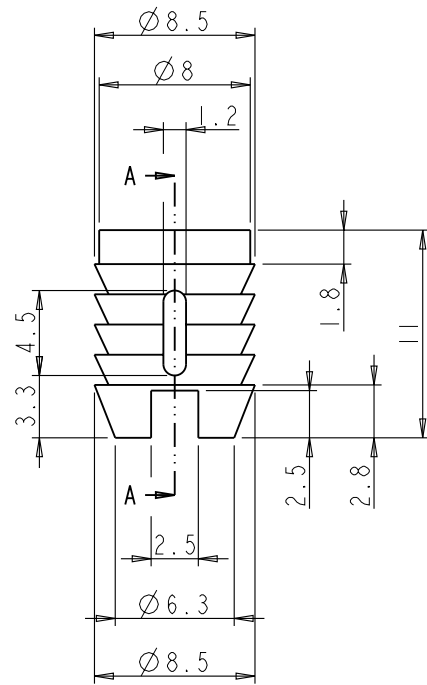
SECTION B-B



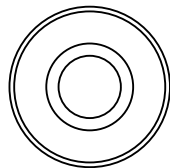
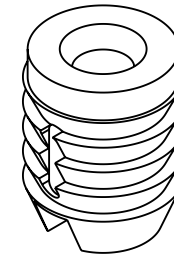
DETAIL A
SCALE 3:1



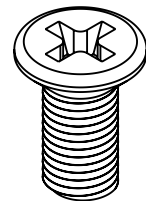
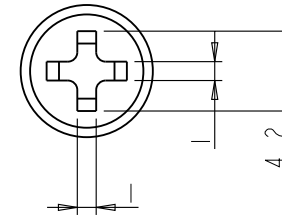
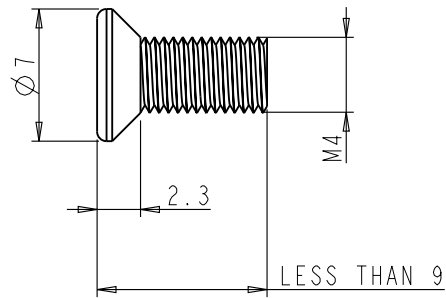
	ITEM: DOOR-BASE		MATERIAL: Zinc		
	FINISH:		WEIGHT: 9		
PROPRIETARY AND CONFIDENTIAL THE INFORMATION CONTAINED IN THIS DRAWING IS THE SOLE PROPERTY OF HARDWARE RESOURCES INC. ANY REPRODUCTION IN PART OR AS A WHOLE WITHOUT THE WRITTEN PERMISSION OF HARDWARE RESOURCES INC. IS PROHIBITED.	TOLERANCE UNLESS OTHERWISE SPECIFIED: X: MM ±0.20 XX: MM ±0.10 XXX: MM ±0.05 ANGULAR: ±0.5° DO NOT SCALE DRAWING		UNIT:	DRAWN BY: <i>alan.liu</i>	DATE:
	SIZE:	CHECKED BY:	DATE:		
	APPROVED BY:		DATE:		
	PROJECTION:				



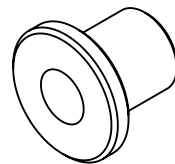
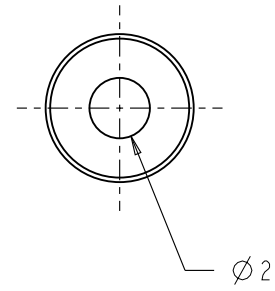
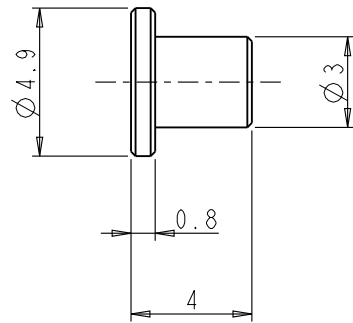
SECTION A-A


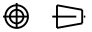


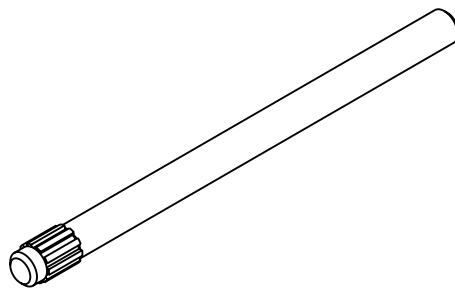
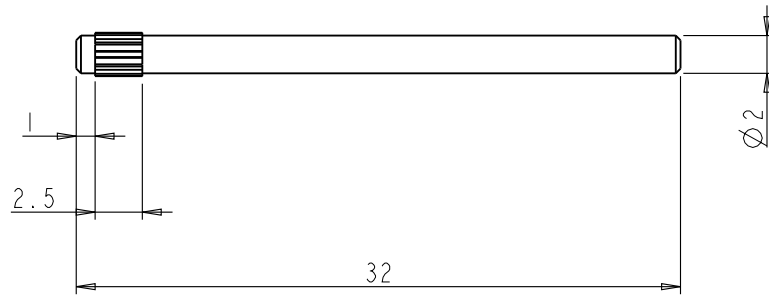
	ITEM: PLASTIC-NUT		MATERIAL:		
	FINISH:		WEIGHT: 9		
PROPRIETARY AND CONFIDENTIAL THE INFORMATION CONTAINED IN THIS DRAWING IS THE SOLE PROPERTY OF HARDWARE RESOURCES INC. ANY REPRODUCTION IN PART OR AS A WHOLE WITHOUT THE WRITTEN PERMISSION OF HARDWARE RESOURCES INC. IS PROHIBITED.	TOLERANCE UNLESS OTHERWISE SPECIFIED: X : MM ±0.20 X.X : MM ±0.10 X.XX : MM ±0.05 ANGULAR: ±0.5° DO NOT SCALE DRAWING		UNIT:	DRAWN BY: <i>alan.liu</i>	DATE:
	SIZE:	CHECKED BY:	DATE:		
	APPROVED BY:		DATE:		
	PROJECTION:				



	ITEM: SCREW		MATERIAL:		
	FINISH:		WEIGHT: 9		
PROPRIETARY AND CONFIDENTIAL THE INFORMATION CONTAINED IN THIS DRAWING IS THE SOLE PROPERTY OF HARDWARE RESOURCES INC. ANY REPRODUCTION IN PART OR AS A WHOLE WITHOUT THE WRITTEN PERMISSION OF HARDWARE RESOURCES INC. IS PROHIBITED.	TOLERANCE UNLESS OTHERWISE SPECIFIED: X : MM ±0.20 X.X : MM ±0.10 X.XX : MM ±0.05 ANGULAR: ±0.5° DO NOT SCALE DRAWING		UNIT:	DRAWN BY: <i>alan.liu</i>	DATE:
	SIZE:	CHECKED BY:	DATE:		
	APPROVED BY:		DATE:		
	PROJECTION:				



	ITEM#: BUSHING		MATERIAL: Nylon		
	FINISH:		WEIGHT: g		
PROPRIETARY AND CONFIDENTIAL THE INFORMATION CONTAINED IN THIS DRAWING IS THE SOLE PROPERTY OF HARDWARE RESOURCES INC. ANY REPRODUCTION IN PART OR AS A WHOLE WITHOUT THE WRITTEN PERMISSION OF HARDWARE RESOURCES INC. IS PROHIBITED.	TOLERANCE UNLESS OTHERWISE SPECIFIED: X : MM ±0.20 X.X : MM ±0.10 X.XX : MM ±0.05 ANGULAR: ±0.5° DO NOT SCALE DRAWING		UNIT:	DRAWN BY: <i>alan.liu</i>	DATE:
	SIZE:	CHECKED BY:	DATE:		
	APPROVED BY:		DATE:		
	PROJECTION: 				



hardware resources PROPRIETARY AND CONFIDENTIAL THE INFORMATION CONTAINED IN THIS DRAWING IS THE SOLE PROPERTY OF HARDWARE RESOURCES INC. ANY REPRODUCTION IN PART OR AS A WHOLE WITHOUT THE WRITTEN PERMISSION OF HARDWARE RESOURCES INC. IS PROHIBITED.	ITEM: PIN		MATERIAL: STEEL	
	FINISH:		WEIGHT: 9	
	TOLERANCE UNLESS OTHERWISE SPECIFIED:		PROJECTION:	
	UNIT:	DRAWN BY: <i>alan.liu</i>		DATE:
	SIZE:	CHECKED BY:	DATE:	
	APPROVED BY:		DATE:	
X : MM ±0.20 X.X : MM ±0.10 X.XX : MM ±0.05 ANGULAR: ±0.5° DO NOT SCALE DRAWING				