



## Stainless Steel Sink

### EHS-1000

#### Product description

Standard, Stainless Steel 1-Station Wall-Mounted Handwashing Sink.

#### Compliances & Certifications



(ADA Compliant, CSA Certified)

#### Code EHS-1000

##### Downloads

- [EHS-1000-ESS-2000-3000 Series Repair and Maintenance Guide.pdf](#)
- [Sinks - Full Line Brochure.pdf](#)
- [Additional Downloads](#)

##### Videos

- [Sloan - Company Overview](#)

---

## Details

- Material:
  - Stainless Steel
- Mounting: Wall-Mounted
- Width: 19" (483mm)

---

## Features

Stainless Steel Hand Washing Sink with the following features:

- Sink constructed from 14 gauge, Type 304 stainless steel with brushed stainless
- Outer rim of sink raised to help prevent splashing and dripping on floors
- Angled front corners to enhance ease of use and protect users from sharp corners
- Pair with Optional Sloan OPTIMA Faucet (not included) for hands-free operation
- Sink is shipped pre-plumbed for easy installation

---

## Recommended specifications

Sloan Stainless Series Hand washing Sink model no. EHS 1000 (code no. 3850057) single hole. Product to be made of 14 gauge type 304 stainless steel with Sloan sensor faucets (sold separately).

---

## Suggested Faucets

### Warranty

[View Warranty Information](#)

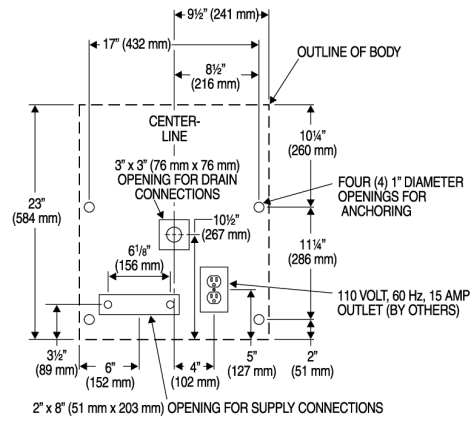
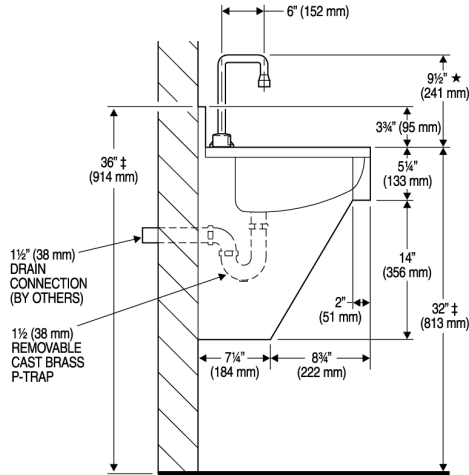
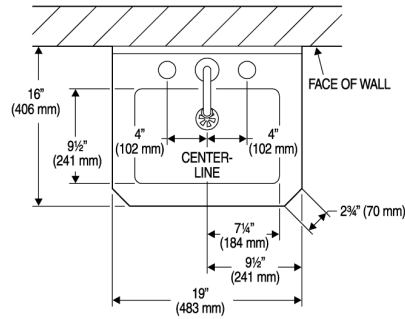
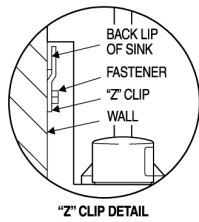
---

### Notes

All information contained within this document subject to change without notice.

[Find a compatible faucet](#) for this sink.

[Find a matching soap dispenser](#) for this sink.



\* EHS-1770 ONLY.  
 ‡ MOUNTING HEIGHT CAN VARY TO MEET INSTALLATION REQUIREMENTS.