

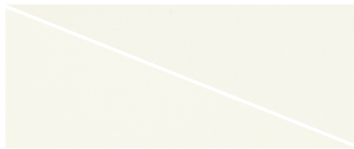
# Swatches

## Wall Tile

### Available Colors

#### Necessary Objects

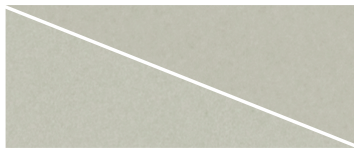
2 x 8, 4 x 8, 3 x 6, 3 x 12 and 6 x 6  
Gloss and Satin Finish (4 x 8 shown)



**NEC01** ▶ Cotton



**NEC02** ▶ Eggshell



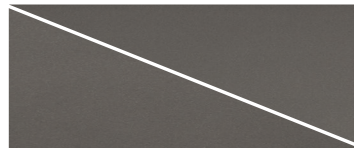
**NEC03** ▶ Stone



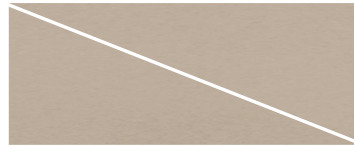
**NEC04** ▶ Coal

#### Neutral Territory

4 x 8 and 3 x 12  
Gloss and Satin Finish (4 x 8 shown)



**NEU11** ▶ Shadow



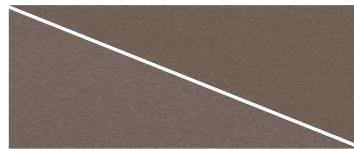
**NEU12** ▶ Warm Silver



**NEU13** ▶ Seashell



**NEU14** ▶ Old Lace



**NEU15** ▶ Smokestack



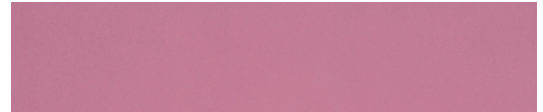
**NEU16** ▶ Sea Ice

#### Brilliant Deduction

3 x 12  
Gloss Finish Only (3 x 12 shown)



**BRI21** ▶ Cobalt



**BRI22** ▶ Mulberry



**BRI23** ▶ Lipstick Red



**BRI24** ▶ Pineapple



**BRI25** ▶ Petrol



**BRI26** ▶ Spruce

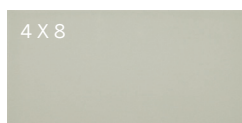
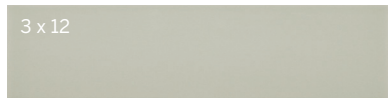
### Features and Benefits

- Sixteen colors, three chromatic series, one amazing wall tile line
- Field tiles in 2 x 8, 4 x 8, 3 x 12, 6 x 6, and 3 x 6
- Finish looks with single bullnose in 4 x 8, 3 x 12, and 3 x 6 with bullnose corners in 4 x 4, 3 x 3, 4 x 8 cove base, as well as 4 x 8 cove base right or left corner
- Satin or gloss finish for 10 of the 16 colors (gloss only on others)
- Globally sourced

# Swatches

## Wall Tile

### Sizes\* shown in NEC03



Information listed here is subject to change. Please refer to [CrossvilleInc.com](http://CrossvilleInc.com) for the latest, most accurate information.

\* See size chart on next page for availability by color and finish.



### Sizes

#### Field Tile\*

Nominal Size (in)	Actual Size (mm)	Thickness (mm)	Finish
2 x 8	48 x 198	8	Satin/Gloss
4 x 8	98 x 198	8	Satin/Gloss
3 x 12	73 x 298	8	Satin/Gloss
6 x 6	148 x 148	8	Satin/Gloss
3 x 6	73 x 148	8	Satin/Gloss

**This product is calibrated (non-rectified)**

Crossville recommends a minimum 2mm grout joint.

\* Field tile sizes are not available in every color or finish. Please refer to Availability Chart on the next page to see options.

### Coordinating Trim\*

Nominal (in)	Actual Size (mm)	Thickness (mm)	Finish
4 x 8 Single Bullnose	98 x 198	8	Satin/Gloss
3 x 12 Single Bullnose	73 x 298	8	Satin/Gloss
3 x 6 Single Bullnose	73 x 148	8	Satin/Gloss
4 x 4 Bullnose Corner	98 x 98	8	Satin/Gloss
3 x 3 Bullnose Corner	73 x 73	8	Satin/Gloss
4 x 8 Cove Base	98 x 198	8	Satin/Gloss
4 x 8 Cove Base Corner Left	98 x 198	8	Satin/Gloss
4 x 8 Cove Base Corner Right	98 x 198	8	Satin/Gloss



4 x 8 Single Bullnose



4 x 4 Bullnose Corner



4 x 8 Cove Base\*\*



4 x 8 Cove Base Corner (left & right)\*\*



\*\* Cove Base has an unglazed flat top



3 x 12 Single Bullnose



3 x 6 Single Bullnose



3 x 3 Bullnose Corner

\* Trim pieces are not available in every color or finish. Please refer to Availability Chart on the next page to see options.

### Shade & Texture Index

Swatches has a shade variation of V1.

V1	V2	V3	V4	V1 Uniform appearance
				V2 Slight Variation
				V3 Moderate Variation
				V4 Substantial Variation

This tile product is produced with a V1 variation. Differences among pieces from the same production run are minimal. Inspect the product upon delivery and for best results, blend tile from several cartons during installation.

### Product Performance

Breaking Strength	>200 lbf	ASTM C648
Chemical Resistance	Unaffected	ASTM C650
Water Absorption	14.0% – 20.0%	ASTM C373
Scratch Hardness	7	Mohs Scale

Photo:

Walls and Tub Base: **BRI22** ▶ Mulberry 3 x 12 Gloss

Floor and Wall: **GRC01** ▶ State of Grace Hexagon Mosaic Unpolished

Tub Deck: **PC011** ▶ State of Grace Countertop Unpolished



# Swatches

**Crossville, Inc.**

PO Box 1168  
Crossville, TN  
38557

**Phone** 931.484.2110  
**Fax** 931.456.2956  
**E-Mail** [Crossc@CrossvilleInc.com](mailto:Crossc@CrossvilleInc.com)  
**Web** [CrossvilleInc.com](http://CrossvilleInc.com)

## Recommended Use

Swatches tile is recommended for interior vertical surfaces in residential and commercial applications.

## Care and Maintenance

Regular cleaning is the best way to keep Swatches tile looking good for years to come. Use clean, hot water (combined with a household cleaner for more aggressive cleaning). Rinse thoroughly and dry with a soft cloth to prevent water spots. No waxes or sealers are needed. More information regarding the care and maintenance of Crossville® products is available at [CrossvilleInc.com](http://CrossvilleInc.com).

## Our Warranty

Crossville Inc. guarantees that its products will meet or exceed the performance specifications outlined in ANSI A137.1- 2012 and in the performance data section of the Crossville, Inc. general product catalog. For complete details check our website at [CrossvilleInc.com](http://CrossvilleInc.com).

## Hydrotect™

Swatches Satin finished tiles are available with Hydrotect. Crossville's revolutionary invisible coating harnesses the power of light, water, and oxygen to create the best defense against dirt and pollution. Whether indoors or out, floors and walls stay cleaner, providing a superior experience in any space. Please request a sample before ordering. For complete details check our website at [CrossvilleInc.com](http://CrossvilleInc.com).



## CrossvilleInc.com

If you want a better idea of what Crossville tile would look like in a particular room setting, simply visit our website and click on Cross-Vision. This powerful software tool allows you to visualize different types of Crossville tile. In addition, you'll find comprehensive information about Crossville's entire portfolio of products. You can also learn about the latest styles and trends from industry experts, download detailed care and maintenance instructions for our various products, or browse electronic versions of Crossville's product brochures. So whether you need information about Crossville products or tile in general, please visit us at [CrossvilleInc.com](http://CrossvilleInc.com).

## Color, Finish, Size and Trim Availability Chart

Color	Finish		2 x 8	4 x 8	3x12	3 x 6	6 x 6	4 x 8 Single Bullnose	3 x 12 Single Bullnose	3 x 6 Single Bullnose	3 x 3 Bullnose Corner	4 x 4 Bullnose Corner	4 x 8 Cove Base & Corners
	Gloss	Satin											
NEC01	✓	✓	✓	✓	✓	✓	✓	✓	✓	✓	✓	✓	✓
NEC02	✓	✓	✓	✓	✓	✓	✓	✓	✓	✓	✓	✓	✓
NEC03	✓	✓	✓	✓	✓	✓	✓	✓	✓	✓	✓	✓	✓
NEC04	✓	✓	✓	✓	✓	✓	✓	✓	✓	✓	✓	✓	✓
NEU11	✓	✓		✓	✓			✓	✓		✓	✓	✓
NEU12	✓	✓		✓	✓			✓	✓		✓	✓	✓
NEU13	✓	✓		✓	✓			✓	✓		✓	✓	✓
NEU14	✓	✓		✓	✓			✓	✓		✓	✓	✓
NEU15	✓	✓		✓	✓			✓	✓		✓	✓	✓
NEU16	✓	✓		✓	✓			✓	✓		✓	✓	✓
BRI21	✓				✓								
BRI22	✓				✓								
BRI23	✓				✓								
BRI24	✓				✓								
BRI25	✓				✓								
BRI26	✓				✓								

## Trade Organizations



## Environmentally Aware

