



BEST CHOICE  
PRODUCTS



# INSTRUCTION MANUAL

---

## 3-Piece Outdoor Metal Bar Set

SKY8920 + SKY8921 + SKY8922 + SKY8923 + SKY8924 + SKY8925  
SKY8926 + SKY8927 + SKY8928 + SKY8929

## ! NOTICE

Please retain these instructions for future reference.

- Please do not exceed the weight limitations of this item.
- Do not stand on or use any part of this item as a step ladder.
- Firmly secure all bolts, screws, or knobs before use.
- Reconfirm that all bolts, screws, or knobs are secure every 90 days.
- Fasten screws loosely during initial assembly. Do not firmly tighten the screws until the item is completely assembled.
- Do not use or store this item in the proximity of open flame or flammable/combustible chemicals.
- Be aware that some parts are heavy and have sharp edges.
- Assemble this item on a flat, level, and stable surface for an ideal construction.
- This product is intended for indoor use only.
- If any parts are missing, broken, damaged, or worn, stop using this product until repairs are made and/or factory replacement parts are installed.
- Do not use this item in a way inconsistent with the manufacturer's instructions as this could void the product warranty.
- This product is intended for residential use only.

## TOOLS REQUIRED



ALLEN WRENCH  
(PROVIDED)



240 LBS  
PER CHAIR  
CAPACITY



110 LBS  
TABLE  
CAPACITY



2 PERSON  
ASSEMBLY



UP TO 30-45 MIN.  
ASSEMBLY

## HARDWARE

1

M6 x 15mm  
BOLT



20 PCS

2

M6 x 30mm  
BOLT



12 PCS

3

M6 x 35mm  
BOLT

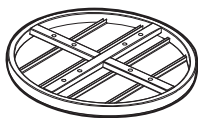


4 PCS

## PARTS

**A**

STOOL SEAT



2 PCS

**B**

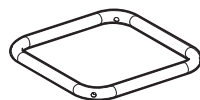
STOOL LEG



8 PCS

**C**

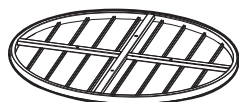
LOWER STOOL SUPPORT



2 PCS

**D**

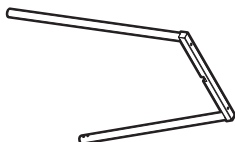
TABLETOP



1 PC

**E**

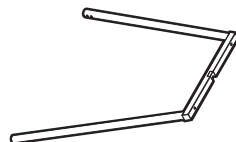
TABLE LEG I



1 PC

**F**

TABLE LEG II



1 PC

**G**

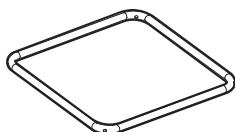
LOWER TABLE LEG



4 PCS

**H**

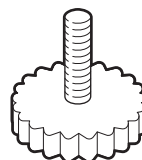
LOWER TABLE SUPPORT



1 PC

**I**

FOOT CAP



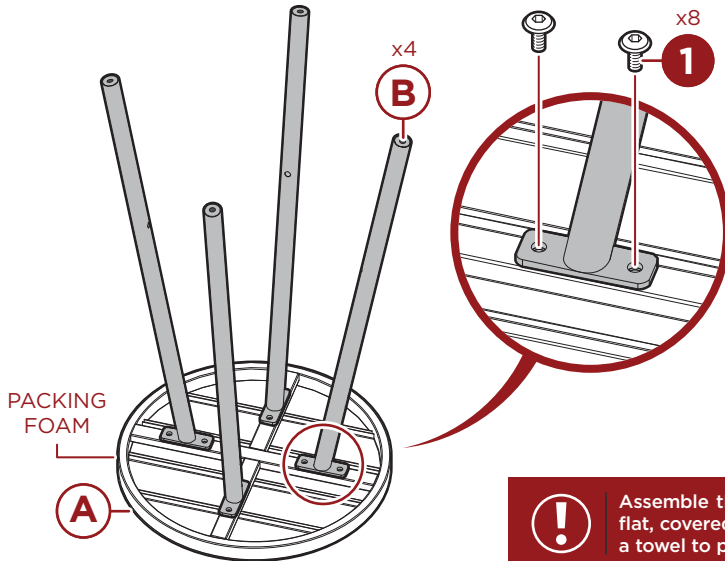
12 PCS

## PRODUCT ASSEMBLY (STOOL)

1

Locate one **part A stool seat** and place it top side down onto a flat, covered surface. Attach four **part B stool legs** with eight **part 1 screws**, two screws per leg.

**NOTE:** Be sure the legs are properly aligned before securing.



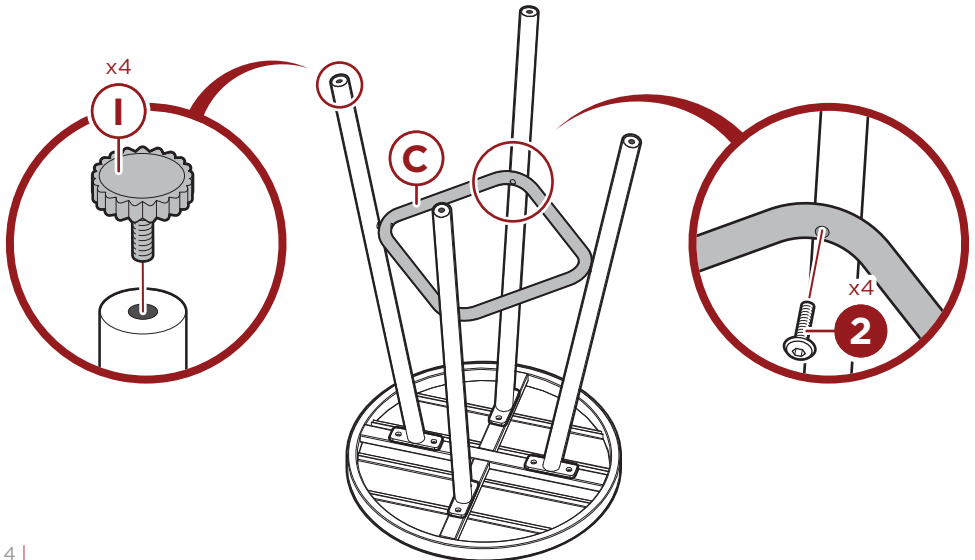
Assemble this product on a flat, covered surface such as a towel to prevent scratches

2

Attach the **part C lower stool support** to the **part B stool legs** with four **part 2 screws**.

Screw a **part I foot cap** into each **part B stool leg**, four foot caps total.

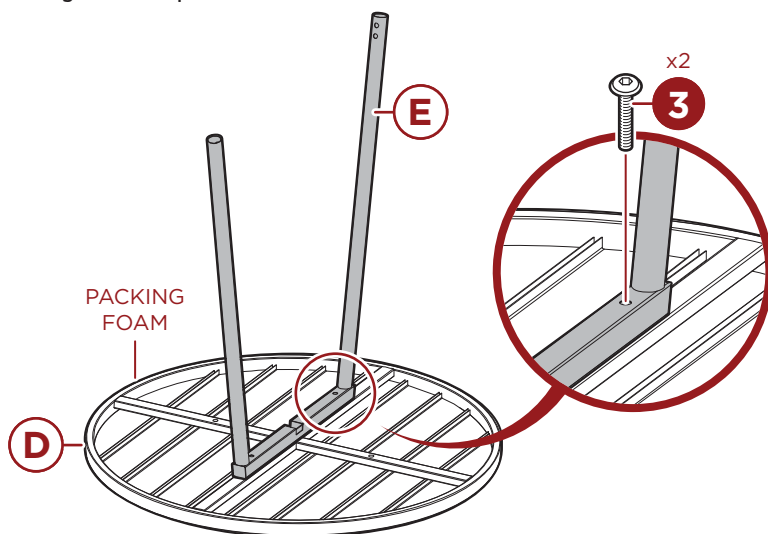
Repeat **steps 1 & 2** to assemble a second stool.



## PRODUCT ASSEMBLY (TABLE)

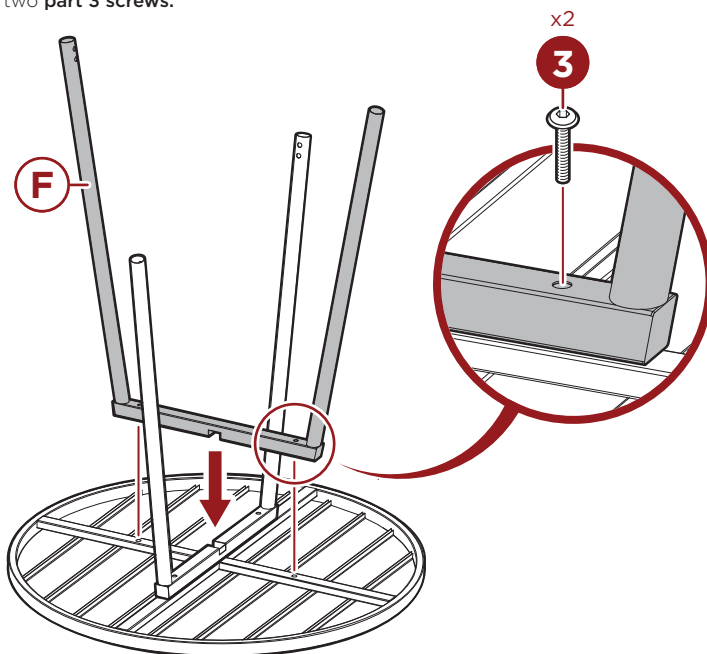
1

Place the **part D tabletop** top side down onto a flat, covered surface, then attach the **part E table leg I** with two **part 3 screws**.



2

Attach the **part F table leg II** to the **part D tabletop**, overlapping the **part E table leg I**, with two **part 3 screws**.



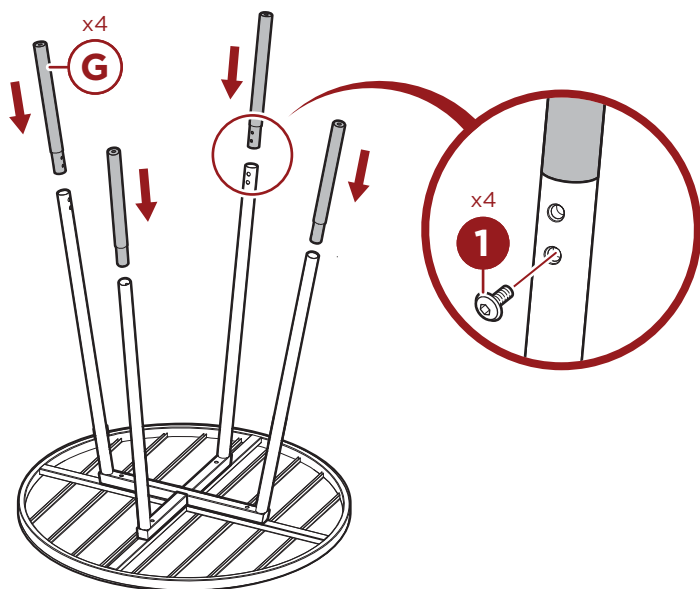
Assemble this product on a flat, covered surface such as a towel to prevent scratches

## PRODUCT ASSEMBLY (TABLE)

3

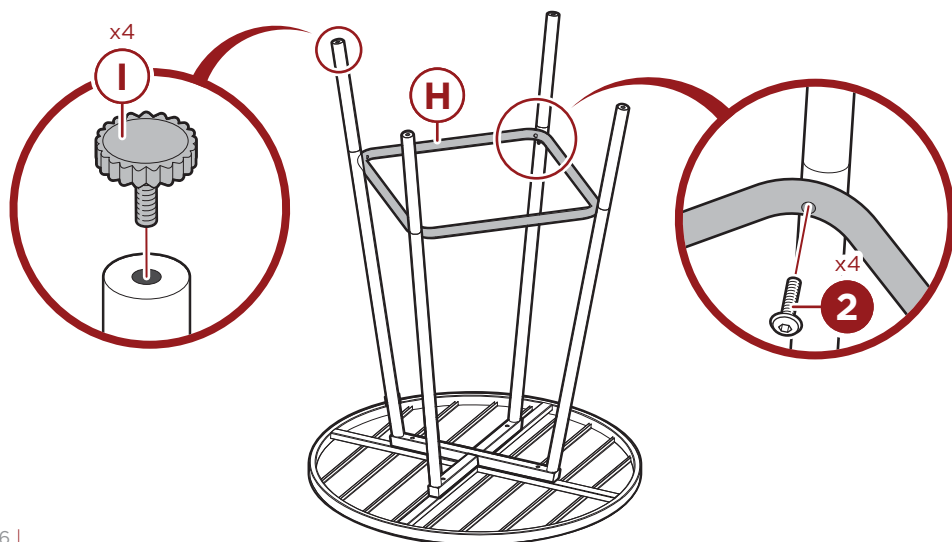
Attach one **part G lower table leg** to the **part E & F table legs** with four **part 1 screws**, one screw per leg.

**NOTE:** Attach **part G** to **part E & F** through the lower fastening holes.



4

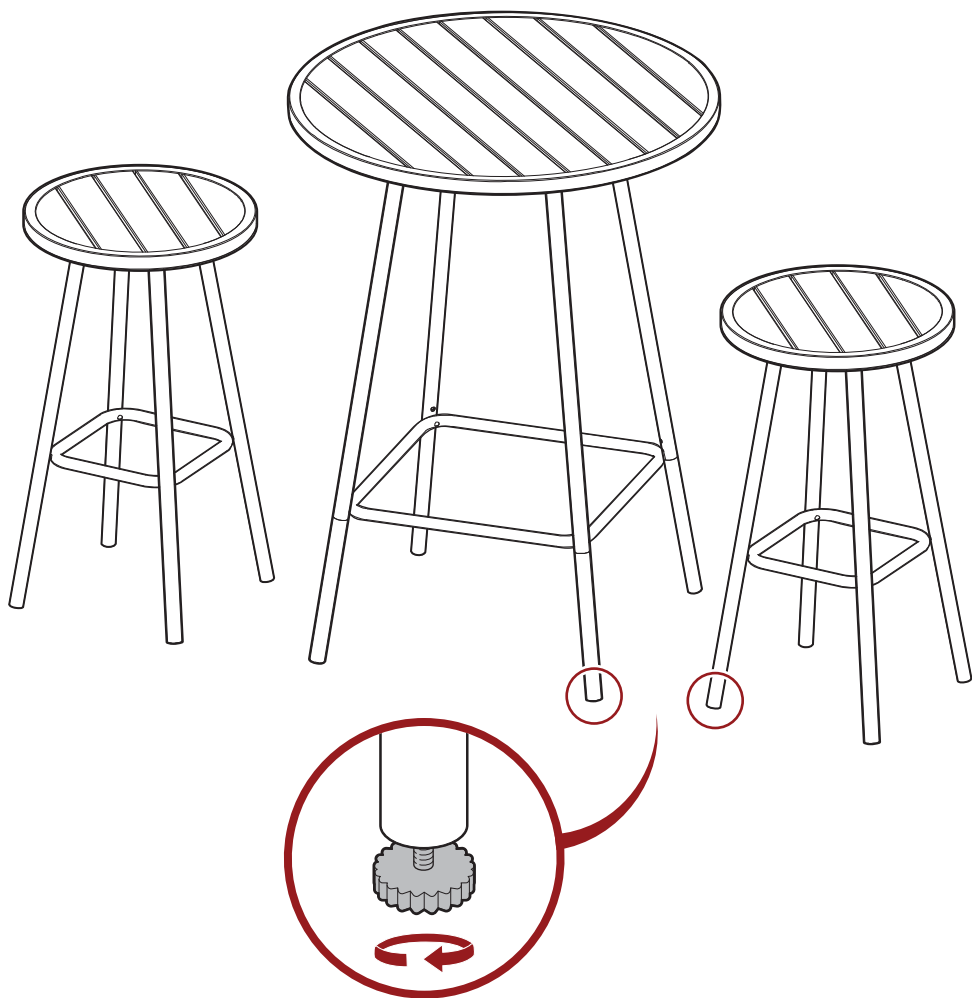
Attach the **part H lower table support** to the **part E & F table legs** with four **part 2 screws**.  
Screw a **part I foot cap** into each **part G lower table leg**, four foot caps total.



## PRODUCT ASSEMBLY

5

Flip the assembled bar set upright, adjust the foot caps as needed until the table and chair stands level.





# HELP CENTER



Question about your product? We're here to help. Visit us at:

[help.bestchoiceproducts.com](http://help.bestchoiceproducts.com)



Chat Support



Product Inquiry



Orders FAQ



Product Assembly



Returns & Refunds

## PRODUCT WARRANTY INFORMATION

All items can be returned for any reason within 60 days of the receipt and will receive a full refund as long as the item is returned in its original product packaging and all accessories from its original shipment are included. All returned items will receive a full refund back to the original payment method. All returned items will not be charged a re-stocking fee.

All returned items require an RA (Return Authorization) number, which can only be provided by a Best Choice Products Customer Service Representative when the return request is submitted. Items received without an RA may not be accepted or may increase your return processing time. Once an item has been received by Best Choice Products, refunds or replacements will be processed within 5 business days.

All returns must be shipped back to the Best Choice Products Return Center at the customer's expense. If the reason for return is a result of an error by Best Choice Products then Best Choice Products will provide a pre-paid shipping label via email. Boxes for return shipping will not be provided by Best Choice Products, and is the customer's responsibility to either use the original shipping boxes or purchase new boxes.

Pictures may be required for some returns to ensure an item is not damaged prior to its return. Items returned are not considered undamaged until they are received by Best Choice Products and verified as such. All damages to items are the customer's responsibility until the item has been received by and acknowledge by Best Choice Products as undamaged.

© Best Choice Products, Inc. All rights reserved. Distributed by Best Choice Products, Inc. Newport Beach, CA 92660



## WARNING

Manufacturer and seller expressly disclaim any and all liability for personal injury, property damage or loss, whether direct, indirect, or incidental, resulting from the incorrect attachment, improper use, inadequate maintenance, unapproved modification, or neglect of this product.