

MR05 US Type - 0.5 to 2.5 gpm

Flow Regulator - Pressure Compensating



flow, stop and go®

Features and Benefits

- ▶ Operates as a flexible orifice to provide reliable flow regulation from 15 to 150 psi.
- ▶ Noiseless and trouble free operation over many years.
- ▶ Press-fit design: no retainer needed.
- ▶ Select flow rates help with WaterSense requirements for faucets or showers.

Options Available

Part #	Color	gpm	L/min
58.7093.1	Brown	0.35	1.32
58.7085.1	Lime	0.50	1.9
58.7086.1	Red	0.74	2.8
58.7092.1	Blue	1.00	3.8
58.7089.1	Green	1.50	5.7
58.7090.1	Light blue	1.75	6.6
58.7091.1	Lilac	2.00	7.6
58.7088.1	Yellow	2.20	8.3
58.7087.1	Gray	2.50	9.5

Certification

ANSI / NSF 61

Materials

Name	Material
Body	Acetal
Core	Acetal
O-ring	EPDM

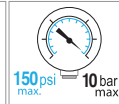
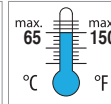
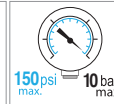
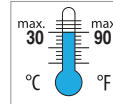
Technical Data

Medium: Clear water only

Wetted surface area: 519.26 mm²

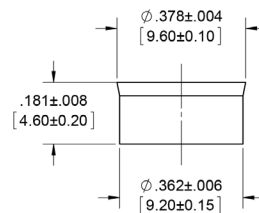
Continuous

Short-term (5 minutes max.)



Dimensions

Flow Regulator Dimensions



Mounting Dimensions

