

QMKC SERIES

COMMERCIAL BASEBOARD HEATER



IDEAL SPACES

- Bedrooms
- Living/Family Rooms
- Kitchens
- Bathrooms
- Basements
- Offices
- Conference Rooms
- Hallways
- Lobbies
- Waiting Rooms

COLORS

- Navajo White

DIMENSIONS



- Ideal for basic, zoned primary/secondary heating
- No fans; convection heat minimizes air flow, reducing flow of bacteria and dust
- Commercial-grade 18-gauge cold rolled front cover and brackets allow heater to withstand rigors of commercial applications
- Steel-sheathed heating element combines the durability of a steel tubular heater with the excellent heat transfer characteristics of aluminum fins
- Built-in wire-way facilitates end-to-end installation of continuous-run heaters
- Large, pre-wired junction boxes at each end are provided with knockouts in the rear, bottom, inside and outside
- High temperature safety limit for added protection in case of airflow blockage
- Pre-notched marks for mounting guide
- UL-listed for installation flush to any wall and flat on any floor type
- Chimney-fin element designed for maximum air circulation
- Air flow directed away from walls to help prevent wall streaking



www.qmarkmep.com

For Technical Services, Call 800-642-4328

ITEM# QFLY_QMKC_1217-1



QMKC SERIES COMMERCIAL BASEBOARD HEATER

MODELS & SPECIFICATIONS

| CATALOG NO. | UPC | VOLTS | WATTS | AMPS | LENGTH (IN) | SHIP WT. (LBS) |
|-------------|-----------------|-------------|----------------|-------------|-------------|----------------|
| QMKC25126W | 6 85360 06046 0 | 120 | 500 | 4.2 | 30" | 7.8 |
| QMKC25026W | 6 85360 06016 3 | 208 | 500 | 2.4 | | |
| QMKC25426W | 6 85360 06087 3 | 240/208 | 500/376 | 2.1/1.8 | | |
| QMKC25726W | 6 85360 06132 0 | 277/240/208 | 500/376/282 | 1.8/1.6/1.4 | 36" | 9.0 |
| QMKC2513W | 6 85360 06051 4 | 120 | 750 | 6.5 | | |
| QMKC2503W | 6 85360 06021 7 | 208 | 750 | 3.6 | | |
| QMKC2543W | 6 85360 06092 7 | 240/208 | 750/564 | 3.1/2.7 | 48" | 11.5 |
| QMKC2573W | 6 85360 06137 5 | 277/240/208 | 750/564/423 | 2.7/2.4/2.0 | | |
| QMKC2514W | 6 85360 06056 9 | 120 | 1000 | 8.3 | | |
| QMKC2504W | 6 85360 06026 2 | 208 | 1000 | 4.8 | 60" | 13.0 |
| QMKC2544W | 6 85360 06097 2 | 240/208 | 1000/752 | 4.2/3.6 | | |
| QMKC2574W | 6 85360 06142 9 | 277/240/208 | 1000/752/564 | 3.6/3.1/2.7 | | |
| QMKC2515W | 6 85360 06061 3 | 120 | 1250 | 10.4 | 72" | 15.5 |
| QMKC2505W | 6 85360 06031 6 | 208 | 1250 | 6.0 | | |
| QMKC2545W | 6 85360 06102 3 | 240/208 | 1250/940 | 5.2/4.5 | | |
| QMKC2575W | 6 85360 06147 4 | 277/240/208 | 1250/940/705 | 4.5/3.9/3.4 | 96" | 20 |
| QMKC2516W | 6 85360 06066 8 | 120 | 1500 | 12.6 | | |
| QMKC2506W | 6 85360 06036 1 | 208 | 1500 | 7.2 | | |
| QMKC2546W | 6 85360 06107 8 | 240/208 | 1500/1128 | 6.3/5.4 | 96" | 20 |
| QMKC2576W | 6 85360 06152 8 | 277/240/208 | 1500/1128/846 | 5.4/4.7/4.1 | | |
| QMKC2508W | 6 85360 06041 5 | 208 | 2000 | 9.6 | | |
| QMKC2548W | 6 85360 06112 2 | 240/208 | 2000/1504 | 8.3/7.2 | 96" | 20 |
| QMKC2578W | 6 85360 06157 3 | 277/240/208 | 2000/1504/1128 | 7.2/6.3/5.4 | | |
| QMKC25008W | 6 85360 06011 8 | 208 | 2500 | 12.0 | | |
| QMKC25408W | 6 85360 06082 8 | 240/208 | 2500/1880 | 10.4/8.7 | 96" | 20 |
| QMKC25708W | 6 85360 06127 6 | 277/240/208 | 2500/1880/1410 | 9.0/7.5/6.8 | | |

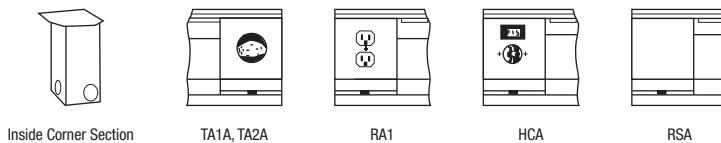
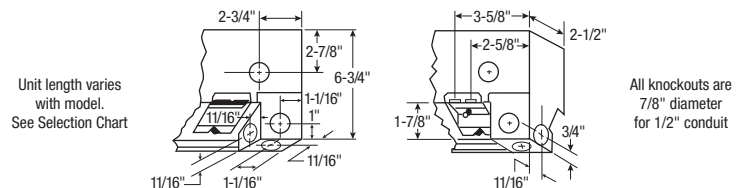
CONTROLS & ACCESSORIES

| CATALOG NO. | UPC | DESCRIPTION | SHIP WT. (LBS) |
|-------------|-----------------|--|----------------|
| TA1AW | 0 98319 73041 1 | SP Thermostat, rated 22A @ 120-277V | 1 |
| TA1TPAW | 0 98319 73042 8 | Tamper-Resistant Version of TA1AW | 1 |
| TA2AW | 0 98319 73043 5 | DP Thermostat, rated 22A @ 120-277V | 1 |
| TA2TPAW | 0 98319 73044 2 | Tamper-Resistant Version of TA2AW | 1 |
| HCA2415/20W | 0 98319 73046 6 | 240V Load Transfer Switch, 20A | 1 |
| HCA1215/20W | 0 98319 73045 9 | 120V Load Transfer Switch, 20A | 1 |
| RSA1224 | 0 98319 71480 0 | 120V/24V Transformer Relay, 22A | 1 |
| RSA2024 | 0 98319 71485 5 | 208V/24V Transformer Relay, 22A | 1 |
| RSA2424 | 0 98319 71490 9 | 240V/24V Transformer Relay, 22A | 1 |
| RSA2724 | 0 98319 71495 4 | 277V/24V Transformer Relay, 19A | 1 |
| RA1W | 0 98319 73047 3 | 120V Duplex Receptacle | 1 |
| DSW2W | 0 98319 73049 7 | Double-Pole Power On/Off Switch rated 20A @ 120-277V | 1 |
| PR24 | 0 98319 71367 4 | Single-Pole Power Relay, 24VControl rated 30A @ 120-240V, 23A @ 277V | 1 |
| PR120 | 0 98319 71368 1 | Same as PR24 except with 120V Control | 1 |
| RA1COMPW | 0 98319 73048 0 | Duplex Receptacle Cover only—carton of 10 | 1 |

FILLER AND BLACK SECTIONS

| CATALOG NO. | UPC | DESCRIPTION | SHIP WT. (LBS) |
|-------------|-----------------|-----------------------|----------------|
| ICAW | 0 98319 73050 3 | Inside Corner | 1 |
| FS12 | 0 98319 73150 0 | 1 ft. Filler Section | 2 |
| FS24 | 0 98319 73151 7 | 2 ft. Filler Section | 4 |
| FS36 | 0 98319 73152 4 | 3 ft. Filler Section | 6 |
| FS48 | 0 98319 73153 1 | 4 ft. Filler Section | 8 |
| FSJ2 | 73154 8 | 2 in. Joiner Strip | 1/2 |
| QMKCBDA2W | 6 85360 05959 4 | 2.6 ft. Blank Section | 4 |
| QMKCBDA3W | 6 85360 05961 7 | 3 ft. Blank Section | 5 |
| QMKCBDA4W | 6 85360 05963 1 | 4 ft. Blank Section | 7 |
| QMKCBDA5W | 6 85360 05965 5 | 5 ft. Blank Section | 9 |
| QMKCBDA6W | 6 85360 05967 9 | 6 ft. Blank Section | 11 |
| QMKCBDA8W | 6 85360 05969 3 | 8 ft. Blank Section | 14 |

NOTE: For high-altitude baseboard heater (mounted above 7,500 ft.), add suffix "H" to catalog number. 8 ft. length baseboards must be ordered in multiples of two pieces for shipment.



www.qmarkmep.com

For Technical Services, Call 800-642-4328

ITEM# QFLY_QMKC_1217-1