

# MALTESE DP

Digital Porcelain

GLAZED PORCELAIN FLOOR & WALL TILE



floridatile

# MALTESE DP Digital Porcelain

shown on front: **29615 12x24** Roman Gray

With a nod to the modernist style of mid-century American designers like Philip Johnson and Charles Eames, Florida Tile has created Maltese<sup>DP</sup>. This glazed porcelain floor and wall collection features small characteristic pits and slight veining of a quintessential limestone look. It is at once cool in tone and welcoming in spirit.

Earthy colors Porto Cream and Roman Gray are rendered in a smooth natural finish. Pressed field tile in 12x12 and 12x24, as

well as a 25-piece mosaic and a 3x12 bullnose are available in both colors.

Maltese<sup>DP</sup> is appropriate for most applications in both residential and commercial settings. It is made in the USA in our Green Squared<sup>®</sup> certified Advanced Manufacturing Center in Lawrenceburg, KY, and includes pre-consumer recycled content. It meets the DCOF AcuTest<sup>®</sup> requirements to be installed in wet areas and is GREENGUARD<sup>®</sup> and Porcelain Tile certified.

below: **29622 12x24** Porto Cream





# PORTO CREAM

---



**29622 12x12**  
Porto Cream



**29622 12x24**  
Porto Cream



**29622/M12**  
Porto Cream Mosaic

# ROMAN GRAY

---



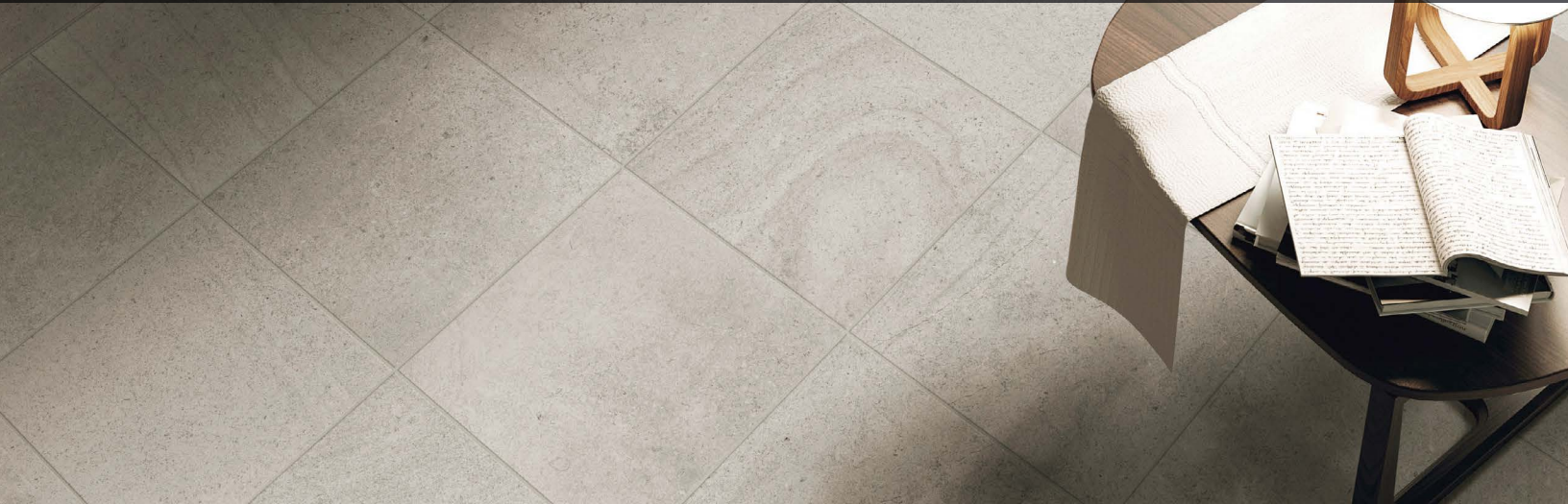
**29615 12x12**  
Roman Gray



**29615 12x24**  
Roman Gray



**29615/M12**  
Roman Gray Mosaic



above: 29615 12x12 Roman Gray

Porcelain Technical Data Properties (Floor)	ASTM®	ANSI®	Results <sup>1</sup>
<b>DCOF AcuTest®<sup>2</sup></b>	A137.1	≥ 0.42	Pass
<b>Surface Hardness</b>	Mohs Scale	N/A	7 Mohs
<b>Break Strength</b>	C-648	≥ 250 lbf.	≥ 300 lbf. avg.
<b>Water Absorption</b>	C-373	≤ 0.5%	≤ 0.5% <sup>3</sup>
<b>Intended Use<sup>4</sup></b>	N/A	N/A	Residential Light Commercial

<sup>1</sup> Values are offered in good faith as being accurate and typical of normal production. Due to the natural variation of raw materials and manufacturing processes, the values of the purchased product for any particular installation may vary.

<sup>2</sup> ANSI® A137.1 standard, ceramic tiles selected for level interior spaces expected to be walked upon when wet must have a minimum wet DCOF AcuTest® value of 0.42.

<sup>3</sup> Average production value.

<sup>4</sup> Please visit [www.floridatile.com/intended-use](http://www.floridatile.com/intended-use) for further details.

### Typical Uses

Maltese<sup>DP</sup> glazed porcelain floor and wall tile is appropriate for residential and commercial wall, countertop, backsplash, and most floor applications.

Notice: Not all flooring products are suitable for wet areas, specialized applications, or commercial use. Please refer to the American National Standard Specifications for Ceramic Tile (ANSI® A137.1) for ceramic, stone, and glass installation for specific usage and installation information.

This Florida Tile product will contribute to USGBC LEED® points and the ANSI® approved NAHB® Green Building Points.

Field Tile Nominal Size (in) <sup>1</sup>	Metric (cm)	Pcs./Sq Ft <sup>2</sup>	Thickness <sup>3</sup>	Edge
<b>12x12</b>	30x30	1	8mm	Pressed
<b>12x24</b>	30x60	.5	9mm	Pressed

<sup>1</sup> These values may vary from lot to lot.

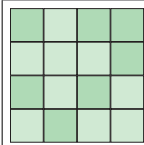
<sup>2</sup> These values are based on actual sizes including the grout joint.

<sup>3</sup> May not apply to textured surfaces or tiles with uneven back patterns such as mesh mounted mosaics.

Trim	Shape	SKU	Nominal Size (in) <sup>1</sup>	Metric (cm)
<b>Bullnose</b>		P43C9	3x12	7.5x30

<sup>1</sup> These values may vary from lot to lot.

### Color Variation



#### V2 Slight Variation

Clearly distinguishable differences in texture and/or pattern with similar colors.

Color, texture, and finish variations may occur due to the nature of the product.

Color reproductions in this printed piece may vary from actual tile colors. Final selection should be made from actual tile samples.

