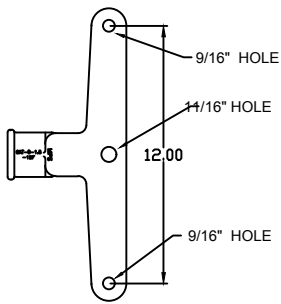
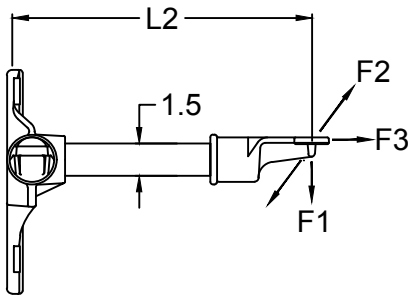
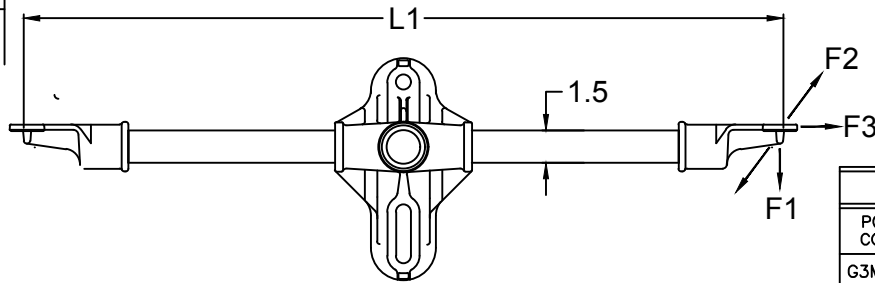


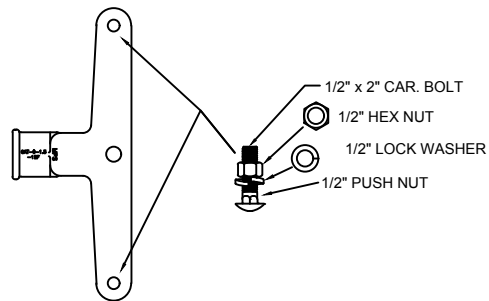
| REVISIONS | | | | |
|-----------|------|-------------|----|------|
| NO. | DATE | DESCRIPTION | BY | CHKD |
| | | | | |



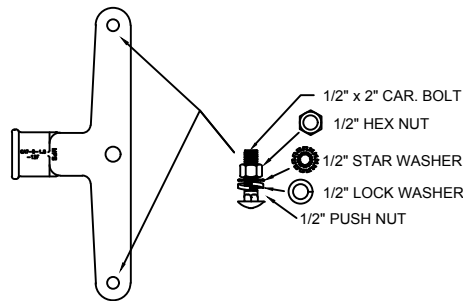
END FITTING VIEW -DD, -DDSC SUFFIX
->CAT-0-1.5-12FC



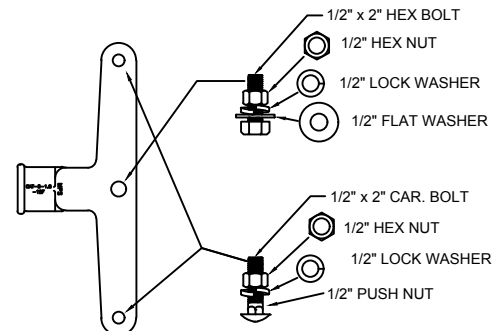
| CATALOG NUMBER | | LENGTHS (IN) | | ULTIMATE MECHANICAL STRENGTHS (LBS) | | |
|----------------------------|-------------------------------|--------------|----|-------------------------------------|----------|-----------|
| POLYURETHANE COATED SERIES | SILICONE RUBBER COATED SERIES | L1 | L2 | F1 VERT. | F2 LONG. | F3 TRANS. |
| G3MA013613DD | G3MA013613DDSC | 36 | 13 | 1200 | 900 | 10000 |
| G3MA013618DD | G3MA013618DDSC | 36 | 18 | 1200 | 900 | 10000 |
| G3MA014013DD | G3MA014013DDSC | 40 | 13 | 1100 | 800 | 10000 |
| G3MA014017DD | G3MA014017DDSC | 40 | 17 | 1100 | 800 | 10000 |
| G3MA014813DD | G3MA014813DDSC | 48 | 13 | 900 | 700 | 10000 |
| G3MA014816DD | G3MA014816DDSC | 48 | 16 | 900 | 700 | 10000 |
| G3MA014818DD | G3MA014818DDSC | 48 | 18 | 900 | 700 | 10000 |
| G3MA014824DD | G3MA014824DDSC | 48 | 24 | 900 | 700 | 10000 |



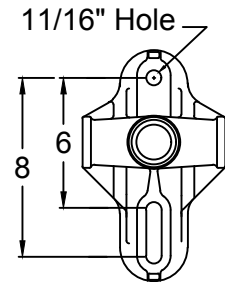
END FITTING VIEW -DDB, -DDBC SUFFIX
->CAT-0-1.5-12F-H (OPTIONAL)
W/ HARDWARE



END FITTING VIEW -DDW, -DDWC SUFFIX
->CAT-0-1.5-12FHW (OPTIONAL)
W/ HARDWARE



END FITTING VIEW -DDX SUFFIX
->CAT-0-1.5-12FHX (OPTIONAL)
W/ HARDWARE




BASE VIEW

NOTES:

- 1.0 MATERIAL
 - 1.1 BASE - ALUMINUM, A356-T6
 - 1.2 END FITTING - DUCTILE IRON GRADE 654512
 - 1.3 ROD - FIBERGLASS
- 2.0 FINISH
 - 2.1 BASE - NONE
 - 2.2 END FITTING - HOT DIP GALVANIZED PER ASTM-A-153
 - 2.3 ROD - ULTRAVIOLET PROTECTIVE COATING, MUNSEL GRAY (OPTIONAL) - VULCANIZED SILICONE RUBBER, GRAY
- 3.0 DIMENSIONS IN INCHES

This information is confidential and is the property of Maclean Power Systems. It may not be made public or reproduced except that the Customer may make copies for use solely in installation, maintenance, and operation of products supplied by Maclean Power Systems.

| | |
|--|------------|
|  MACLEAN POWER SYSTEMS A Maclean-fogg Company | |
| G3MA01-"L1L2"-DD SERIES TRIPLE PHASE, ZERO DEGREE, DOUBLE POSITION BRACKET | |
| DATE: 6-08-12 | SCALE: 1:1 |
| NO.: | CEB-3992 |
| DRW. BY: MYL | CHK. BY: |
| APP. BY: | APPR. BY: |
| R/0 | SHL/DF |

ENG. REF.