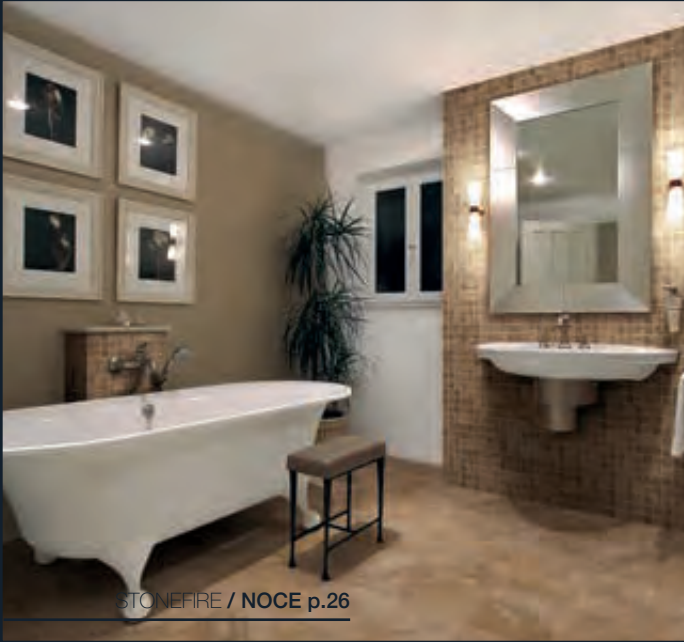
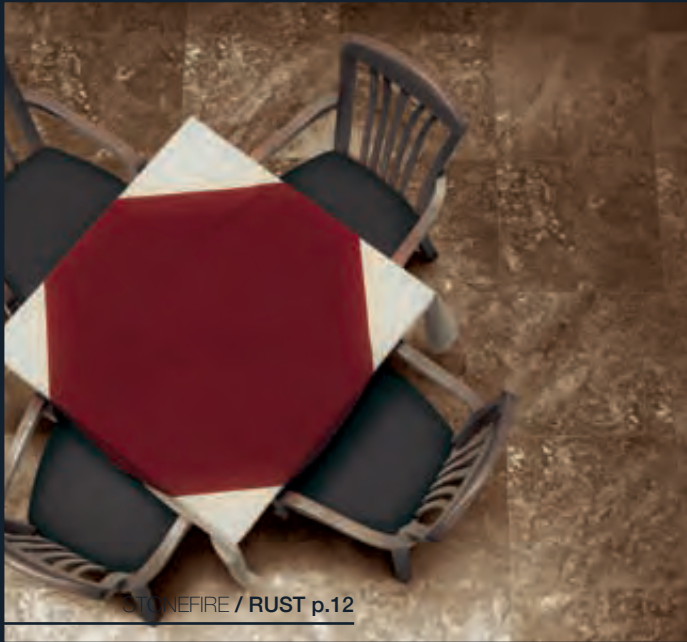


STONEFIRE



STONEFIRE



colors

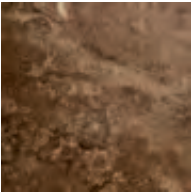
STONEFIRE / ALMOND



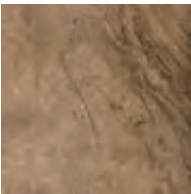
STONEFIRE / BEIGE



STONEFIRE / RUST



STONEFIRE / NOCE



STONEFIRE / GREY



The unique shade variation found in Stonefire is representative of the setting sun giving way to shadows; while the striations on the tile reflect the windswept markings of the true stone.





STONEFIRE / ALMOND



12"x12" / ALMOND



STONEFIRE / BEIGE



18"x18" / BEIGE



STONEFIRE / RUST



18"x18" / RUST



STONEFIRE / NOCE





STONEFIRE / GREY



18"x18" / GREY

SIZES & SHADE VARIATION

24

sizes:

6"x6"



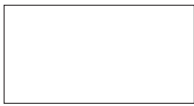
1093165 Beige
1093166 Noce
1093346 Almond
1093274 Grey
1093275 Rust

12"x12"



1093086 Beige
1093087 Noce
1093342 Almond
1093262 Grey
1093263 Rust

12"x24"



1093266 Beige
1093267 Noce
1093366 Almond
1093268 Grey
1093269 Rust

18"x18"

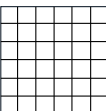


1093088 Beige
1093089 Noce
1093343 Almond
1093264 Grey
1093265 Rust

Colors shown may vary from actual product.
Final selection should be made from actual product samples.

mosaics & trim pieces:

12"x12" Mosaic



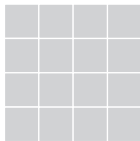
1093169 Beige
1093170 Noce
1093348 Almond
1093278 Grey
1093279 Rust

3"x12" Bullnose



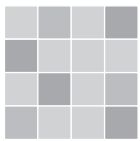
1093167 Beige
1093168 Noce
1093347 Almond
1093276 Grey
1093277 Rust

25



V1

UNIFORM APPEARANCE
Differences among pieces from the same production run are minimal.



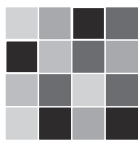
V2

SLIGHT VARIATION
Clearly distinguishable differences in texture and/or pattern with similar colors.



V3









MODERATE VARIATION
While the colors present on a single piece of tile will be indicative of the colors to be expected on the other tiles, the amount of colors on each piece will vary significantly.



V4

SUBSTANTIAL VARIATION
Random color differences from tile to tile, so that one tile may have totally different colors from that on other tiles. Thus, the final installation will be unique.

technical specifications

		REFERENCE VALUE	DECLARED VALUE	TEST METHOD	
	SURFACE ABRASION		IV	ASTM C1027	 RESISTANT FOR THE HOUSE The product is water-resistant: it stops liquids, body oils, acidic and staining substances from penetrating the tiles. It resists scratches, scuffs and gauges better than any other floor covering. It does not absorb fumes, odors or smoke. It doesn't discolor or fade when exposed to sunlight, or other natural elements. It is completely fire proof. It resists burns and doesn't feed a fire. Its high resistance to abrasive dirt and grime makes it suitable even for heavy-traffic areas of the house such as hallways, entrances, foyers and walkways. FROST RESISTANT Exceeding the ADA standard requirements, the Milestone product can also be used for outside applications. It stands up to abrupt temperature changes and freezing-thaw cycles. When properly installed according to ANSI A137.1. It's strong enough to be used in exterior applications even in frigid climates. Proper consideration must be given to the anti-slip requirements of the area to be tiled. ANTI-SLIP The testing conducted on our finished product will guarantee that all of our tiles will have an anti-slip surface so they may be used with total confidence in kitchen and bath applications. The Milestone product is perfect for both home and commercial interiors, such as restaurants, offices, retail stores, etc. Its anti-slip properties provide a safe walking surface in both wet and dry conditions, according to the Americans with Disabilities Act. HYGIENE/SANATATION & EASY CLEANING The Milestone product doesn't absorb odors or bacteria of any kind. It's easy to clean with a damp sponge, mop, or cloth. For a more intense cleaning, simply use a mild solution of water and a common household detergent. Regular cleaning will stop the growth of germs and bacteria in damp areas such as the bathroom.
	WATER ABSORPTION	≤0.5%	MEETS REQUIREMENT	ASTM C373	
	CHEMICAL RESISTANCE	AS REPORTED	NOT AFFECTED	ASTM 650	
	DYNAMIC COEFFICIENT OF FRICTION	≥0.42 WET	MEETS REQUIREMENT	ANSI A137.1	
	STAIN RESISTANCE	AS REPORTED	NOT AFFECTED	ASTM C1378	
	BREAKING STRENGTH		≥400	ASTM C648	
	RESISTANCE TO FREEZE	AS REPORTED	RESISTANT	ASTM C1026	

• DUE TO THE INHERENT NATURE OF FIRED PORCELAIN TILE, IT IS IMPORTANT TO NOTE THAT THE COEFFICIENT OF FRICTION MAY VARY WITHIN AND BETWEEN PRODUCT RUNS.

packaging

SIZES	METRIC (CM)	THICKNESS (MM)	PIECES PER BOX	SQ.FT/PERBOX	WEIGHT PER BOX	BOXES PER PALLET	UOM PER PALLET	WEIGHT/PERPALLET*
FIELD TILES								
6"x6"	15x15	10 mm	30	7.5	30.1	72	540	2,166
12"x12"	30x30	10 mm	13	13	58.5	48	624	2,808
12"x24"	30x60	10 mm	6	12	54	48	576	2,592
18"x18"	45x45	10 mm	6	13.5	61	32	432	1,944
MOSAICS AND COORDINATING TRIMS								
3"x12" BULLNOSE	7.5x30	10 mm	12	3	12.2	168	2,016 pcs	2,044
12"x12" MOSAIC	30x30	10 mm	10	10	39	45	450 pcs	1,755

* WEIGHT PER PALLET DOES NOT INCLUDE PALLET WEIGHT ITSELF.
ALL OTHER SIZES WILL BE PACKAGED AS ORDERED.
PLEASE CONTACT MILESTONE CUSTOMER SERVICE AT 1-877-356-7461 FOR PACKAGING INFORMATION.

MINIMUM GROUT SIZE RECOMMENDED = 5 MM (OR APPROX. 3/16") IF STAGGERED TILE PLACEMENT, WE RECOMMEND USING A 30% OFFSET. IF SPECIFIED BRICK PATTERN WITH 1/2 PATTERN MANDATORY, A BIGGER GROUT IS RECOMMENDED TO HIDE IMPERFECTIONS OF INSTALLATION (MINIMUM 1/4").

- Routine care instructions:
1. Wash with water to remove superficial dirt.
 2. Application of Fila Cleaner® Fila (commercial product) diluted to an average of 1:200 to the surface.
 3. Let the solution sit 5-7 minutes.
 4. Remove the cleaner with a vigorous mechanical cleaning action using common hand cleaning equipment, or a suitable floor-cleaning appliance.
 5. Dry the floor completely.

Note: For desired results, it is particularly important to combine the effect of the detergent with a vigorous mechanical cleaning action.

The products mentioned in these instructions do not officiate any official agreements with any floor cleaning product producers.

CLEANING & MAINTENANCE



CERTIFICATIONS & ACCREDITATIONS

PROGRESSTHATTOUCHESANDINVESTSINTHEENTIRESOCIETY

AsactivememberoftheUSGreenBuildingCouncil,Milestonepreadsawarenessto theentireAmericancommunitiesandencouragetowardthefuseofbuildingolutionsinspired byenvironmentallyfriendlypractices.UsingMilestoneproductsforprojectimplementationwill positivelycontributeinobtainingcoresandpointsrequiredforearningtheLEEDcertification (Leadership in Energy and Environmental Design).

ACOMMITMENTTOTHEDEVELOPMENTOFPRODUCTSFORA CONSCIOUS BUILDING TRADE

Milestone offers products containing recycled material. Theoptionofeco-compatibleproductionssystemsintheofalandscapeproducedtheUS.

TECHNICALDEVELOPMENTTHATCONSIDERSTHENATURAL ENVIRONMENT

Milestonecommitsdheco-compatibleprojectandandateshesamintoravanguard productionprocess,minimizingthenegativeimpactontheenvironment.

WHY PORCELAIN?

Therearemanyreasonstochooseimperviousporcelaintileoverotherfloorcoveringsit offersthebiggestarrayofdesignoptionsandholditsvaluethelongestinacomparison between themanydifferentflooringoptionsporcelaintileoffersoneofthemostdurableand least expensive options over the lifespan of the building.

Benefits of Porcelain Tile

- Impervious to water
- Easy to maintain
- Variety of design options
- Environmentally friendly
- Resistant to germs and bacteria
- Fade resistant
- Fire resistant
- Durable - best long-term value vs. other floor coverings

SUGGESTED INSTALLATIONS

PEI Class IV	Moderate to heavy foot traffic Recommended for all residential applications as well as medium commercial and light institutional applications.
-------------------------------	--



300 International Blvd. Clarksville, TN 37040 | www.milestonetiles.com | 1-877-356-7461

