

PROFESSIONAL SERIES HIGH OUTPUT



SURFACE MOUNT | IN-CEILING | TWO-PIECE IN-CEILING | PENDANT

ABOUT THE PROFESSIONAL SERIES HIGH OUTPUT LOUDSPEAKERS

Professional Series High Output loudspeakers extend the Professional Series platform with a compression-driver family engineered for demanding commercial environments where elevated SPL, controlled dispersion, and reliable speech intelligibility are essential. Each model pairs an 8-inch low-frequency woofer with a 1.4-inch coaxially mounted compression driver, delivering extended low-frequency response and increased acoustic throw, reducing the need for supplemental subwoofers.

Variable Dispersion Technology is delivered through a magnetically interchangeable horn and collar assembly that ships in-box with every model. Installers can select between 120° wide dispersion for shorter throw applications and 80° narrow dispersion for high ceilings or longer throw applications, with the flexibility to reconfigure in the field without special tools. A two-position switch optimizes the crossover for whichever dispersion configuration is selected, ensuring consistent sonic performance in either mode. Both options are included in the box across all form factors, allowing coverage to be tailored to any room shape or ceiling height without compromising sonic character or requiring different SKUs for different applications.

Integrated 70V/100V transformers with taps up to 120W and an 8-ohm bypass support both distributed and direct-drive system designs within the same product family. In-ceiling, surface-mount, and pendant form factors share uniform voicing, allowing mix-and-match deployment across zones. The surface mount model carries an outdoor rating, extending the family's reach to covered outdoor venues, terraces, and open-air hospitality environments.

FAMILY BENEFITS & FEATURES

Performance

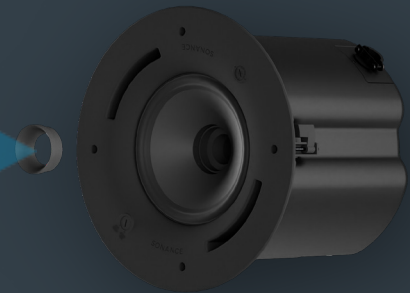
- 8" LF + 1.4" coaxially mounted compression driver handles foreground music, open microphones, and high-dynamic-range applications
- Low-frequency extension to 41 Hz delivers full-range performance from a single enclosure
- Two-position crossover switch optimizes system performance for either wide or narrow dispersion configuration
- Uniform voicing across all form factors enables seamless mix-and-match deployment
- Integrated 70/100V transformer with taps up to 120W and 8-ohm bypass

Installation

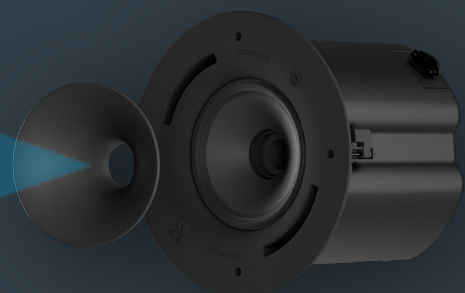
- Four form factors — pendant, surface-mount, blind-mount in-ceiling, and two-piece in-ceiling pre-install — cover new construction, retrofit, open-ceiling, and outdoor applications
- Two-piece back can allows for rough-in option during construction
- Field-adjustable dispersion via magnetic horn and collar assembly — both options ship in-box, no special tools required

TECHNOLOGY SPOTLIGHT: VARIABLE DISPERSION TECHNOLOGY

120° dispersion with the included collar installed



80° dispersion with the included horn installed



KEY SPECIFICATIONS



PS-P85T



PS-S85T



PS-C85RT



PS-C85RTBF &
PS-C85BB

SKU	40233 - White 40234 - Black	40235 - White 40236 - Black	40229 - White	40231 - PS-C85RTBF 40232 - PS-C85BB
Colors	White - RAL 9003 Black -RAL 7021		White - RAL 9003 Black - RAL 7021 (optional grille accessory)	
HF Driver	1.4" (36mm) aluminum dome compression driver			
LF Driver	8.0" (203mm) aluminum cone, Santoprene surround			
Frequency Range +/-10dB	36.6Hz - 25kHz	36.6Hz - 25kHz	39.8Hz - 25kHz	36.6Hz - 25kHz
Frequency Range +/-3dB	41.4Hz - 20kHz	41.4Hz - 20kHz	53.3Hz - 20kHz	41.4Hz - 20kHz
Long Term Power Handling (IEC)	150 watts (600 Watts Peak), 100 Hours			
Sensitivity	88dB SPL	93dB SPL	93dB SPL	91dB SPL
Long Term - Maximum SPL	109dB (115dB Peak)	114dB (120dB Peak)	114dB (120dB Peak)	112dB (118dB Peak)
Transformer Taps 70V	120W, 60W, 30W, 15W (8 ohm bypass)			
Transformer Taps 100V	120W, 60W, 30W (8 ohm bypass)			
Dimensions	11.17" x 24.69" (283.8mm x 627.0)	19.47" x 11.57" x 10.25" (494.5mm x 293.9mm x 260.3)	13.27" x 10.82" (337mm x 274.8mm)	11.07" x 7.22" (281.1mm x 184.4mm)
Cut out diameter	N/A	N/A	11.625" (296mm)	10.125" (257mm)
Weight (with grille)	23.55 lbs. (10.68kg)	29.30 lbs. (13.29kg)	26.04 lbs.(11.81kg)	30.85 lb (13.98kg)
Input Connector	Four pin, Euroblock with loop output connections			
Certifications	UL 1480		UL 1480A, UL 2043, NFPA 90A, NFPA 70	
Suspension Point	Back	Top, Bottom and Back	Two, on top Surface	Two, on Top Surface

©2026 Sonance. All rights reserved.

Sonance is a registered trademark of Dana Innovations.

Due to continuous product improvement, all features and specifications are subject to change without notice.

For the latest Sonance product specification information visit our website: www.sonance.com

SONANCE | 991 Calle Amanecer, San Clemente, CA 92673 USA

(949) 492-7777 | FAX: (949) 361-5151 | Technical Support: (949) 492-7777

www.sonance.com

