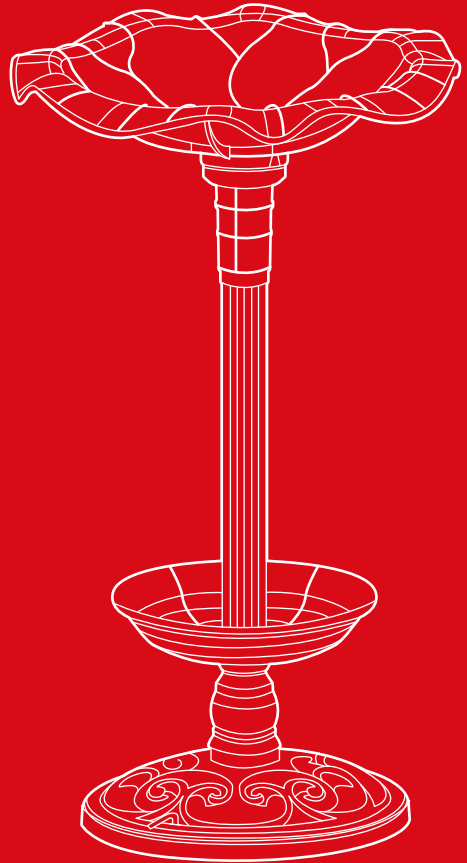




BEST CHOICE
PRODUCTS



INSTRUCTION MANUAL

Solar Bird Bath with Planter

! NOTICE

- Be aware that some parts are heavy and have sharp edges.
- If any parts are missing, broken, damaged, or worn, stop using this product until repairs are made and/or factory replacement parts are installed.
- Do not use this item in a way inconsistent with the manufacturer's instructions as this could void the product warranty.

CALIFORNIA PROPOSITION 65

! WARNING: This product can expose you to chemicals including Lead and lead compounds, which is known to the State of California to cause cancer and birth defects or other reproductive harm. For more information go to www.P65Warnings.ca.gov

TOOLS REQUIRED



PHILLIPS
SCREWDRIVER



1 AA BATTERY
(PROVIDED)



1 PERSON
ASSEMBLY

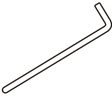


UP TO 30 MIN.
ASSEMBLY

HARDWARE

1

STAKE



3 PCS

PARTS

A

BASE



1 PC

B

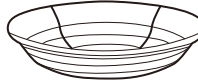
SUPPORT



1 PC

C

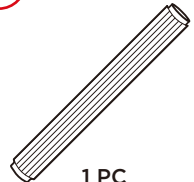
PLANTER



1 PC

D

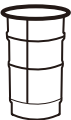
PEDESTAL POLE



1 PC

E

OUTER CAGE



1 PC

F

LIGHT



1 PC

G

BOWL



1 PC

PRODUCT ASSEMBLY

BEFORE ASSEMBLY

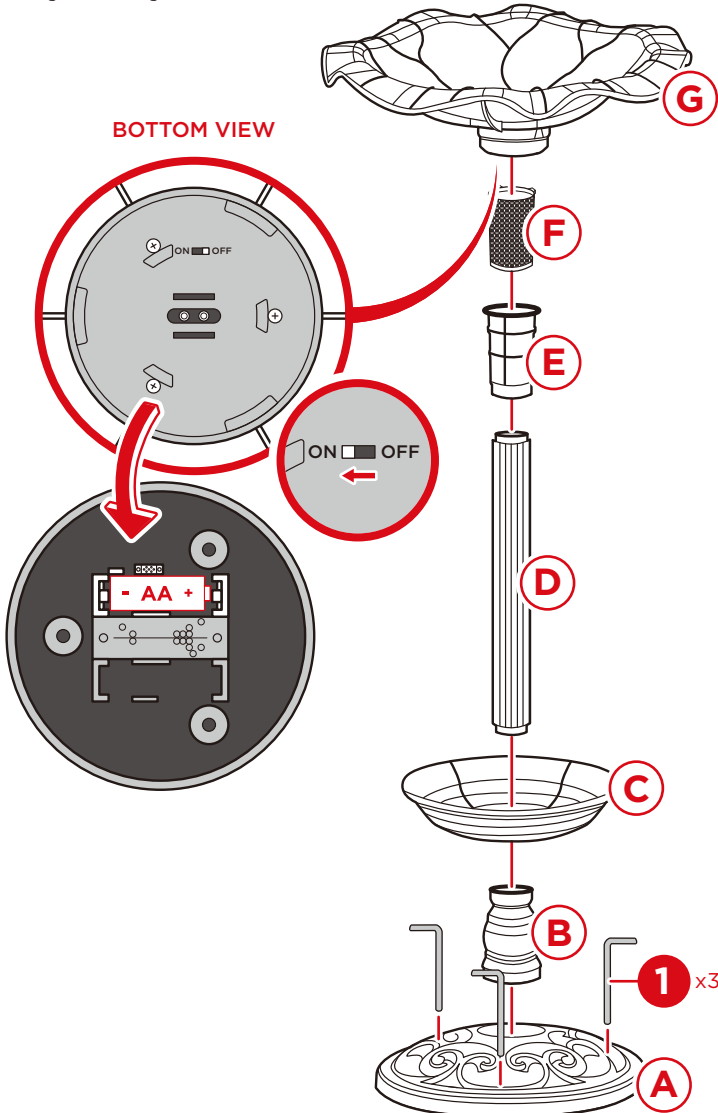
1. Locate the **part G bowl** and place it on a flat surface with its bottom facing upright.
2. Use a screwdriver to remove the battery cover and confirm the single AA battery is properly installed.
3. Replace the battery cover, then flip the switch to the **ON** position.

NOTE: The lights require **6-8 hours** in direct sunlight to charge.

ASSEMBLY

1. Assemble the bird bath. Start from the base and assemble upwards.
2. Use the three **part 1 stakes** to secure the bird bath to the ground.

NOTE: The solar panel is inside the bowl. Once assembled, allow **6-8 hours** in direct sunlight to charge, and the lights will turn on automatically at night.





HELP CENTER



Question about your product? We're here to help. Visit us at:

help.bestchoiceproducts.com



Chat Support



Product Inquiry



Orders FAQ



Product Assembly



Returns & Refunds

PRODUCT WARRANTY INFORMATION

All items can be returned for any reason within 60 days of the receipt and will receive a full refund as long as the item is returned in its original product packaging and all accessories from its original shipment are included. All returned items will receive a full refund back to the original payment method. All returned items will not be charged a re-stocking fee.

All returned items require an RA (Return Authorization) number, which can only be provided by a Best Choice Products Customer Service Representative when the return request is submitted. Items received without an RA may not be accepted or may increase your return processing time. Once an item has been received by Best Choice Products, refunds or replacements will be processed within 5 business days.

All returns must be shipped back to the Best Choice Products Return Center at the customer's expense. If the reason for return is a result of an error by Best Choice Products then Best Choice Products will provide a pre-paid shipping label via email. Boxes for return shipping will not be provided by Best Choice Products, and is the customer's responsibility to either use the original shipping boxes or purchase new boxes.

Pictures may be required for some returns to ensure an item is not damaged prior to its return. Items returned are not considered undamaged until they are received by Best Choice Products and verified as such. All damages to items are the customer's responsibility until the item has been received by and acknowledge by Best Choice Products as undamaged.



WARNING

Manufacturer and seller expressly disclaim any and all liability for personal injury, property damage or loss, whether direct, indirect, or incidental, resulting from the incorrect attachment, improper use, inadequate maintenance, unapproved modification, or neglect of this product.