

12200A-LED

2" LED IC/AT New Construction Housing

Product Description

The 12200A-LED features IDEAL connections that allows for quick, snap-in connection for NICOR® 2" D-series LED downlights. Suitable for new construction in residential and commercial applications. IC rated. Suitable for direct contact with insulation.

Housing

- Galvanized steel plaster frame with J-Box and captive hanger bars
- Triac dimmable LED driver is mounted directly to housing
- Only compatible with NICOR's 2" LED downlights: Available in round smooth, round baffle, square smooth, square baffle, adjustable gimbal and adjustable square
- Suitable for direct contact with insulation
- Airtight housing limits the exchange of air between ceiling plenum and heated/cooled areas
- Washington State Energy Code approved to meet restricted airflow requirements

Junction Box

- One 3/8" knockout
- One 3/4" Knockout
- Three 1/2" Knockouts
- Four pryouts with integral strain relief simplify Romex installation
- Supplied with three push-in wire connectors
- Listed for through branch circuit wiring
- Junction box not accessible from below ceiling after installation

Hanger Bars

- Heavy-gauge NICOR captive hanger bars provide greater stability, allowing housing to be positioned at any point within a 24" joist span
- Unique hanger bar lip design helps align can to joist
- Four double-headed captive nails provide for ease of installation
- Score lines allow bars to be shortened without tools to accommodate a 12" joist span

Ordering Information

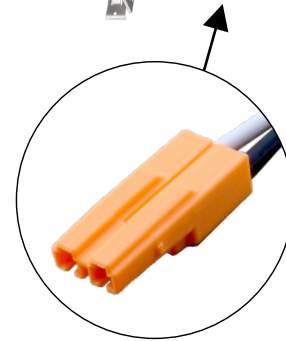
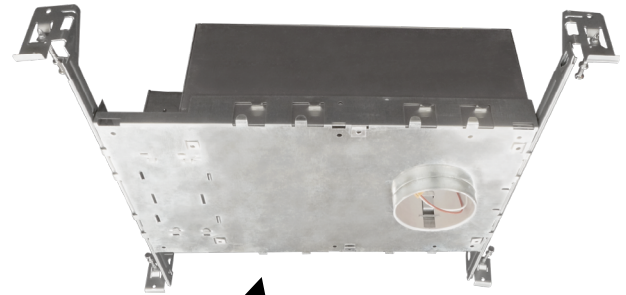
Catalog Number	Description
12200A-LED	2" LED IC/AT New Construction Housing

Project _____

Catalog _____

Type _____

Date _____



IDEAL Connector

