

Whole-House Ceiling Speakers

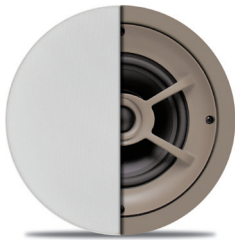
Protege C635

One pair of ceiling speakers with 6½" aluminum woofers, 1" pivoting titanium dome tweeters and 100 watt power handling.

- New Ceiling Speakers
- Power Handling: 100 Watts
- Frequency Response: 40Hz - 22kHz
- Impedance: 8Ω

ITEM	U/M
C635	Pair

- Sensitivity: 92dB 1W/1m
- Includes Thin-Bezel Grilles held by Neo Magnets
- Diameter x Depth: 9¼" x 3¾"
- Ceiling Cut Out: 8¼"



Protege C621

One pair of ceiling speakers with 6½" polypropylene woofers, 1" pivoting silk dome tweeters and 100 watt power handling.

- Replaces C620 Ceiling Speakers
- Power Handling: 100 Watts
- Frequency Response: 45Hz - 20kHz
- Impedance: 8Ω

ITEM	U/M
PAS11621	Pair

- Sensitivity: 91dB 1W/1m
- Includes Thin-Bezel Grilles held by Neo Magnets
- Diameter x Depth: 9¼" x 35/8"
- Ceiling Cut Out: 8¼"

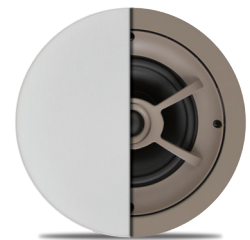
Protege C612

One pair of ceiling speakers with 6½" polypropylene woofers, 1" pivoting soft dome tweeters and 85 watt power handling.

- Replaces C610 Ceiling Speakers
- Power Handling: 85 Watts
- Frequency Response: 45Hz - 20kHz
- Impedance: 8Ω

ITEM	U/M		
PAS11612	Pair	\$265	\$105

- Sensitivity: 91dB 1W/1m
- Includes Thin-Bezel Grilles held by Neo Magnets
- Diameter x Depth: 9¼" x 35/8"
- Ceiling Cut Out: 8¼"



Protege C606

One pair of ceiling speakers with 6½" polypropylene woofers, ¾" soft dome tweeters and 75 watt power handling.

- Replaces C605 Ceiling Speakers
- Power Handling: 75 Watts
- Frequency Response: 45Hz - 20kHz
- Impedance: 8Ω

ITEM	U/M
PAS11606	Pair

- Sensitivity: 90dB 1W/1m
- Includes Thin-Bezel Grilles held by Neo Magnets
- Diameter x Depth: 9¼" x 35/8"
- Ceiling Cut Out: 8¼"

Protege C501

One pair of ceiling speakers with 5¼" polypropylene woofers, ½" pivoting polyamide hard dome tweeters and 75 watt power handling.

- Replaces C500 Ceiling Speakers
- Power Handling: 75 Watts
- Frequency Response: 40Hz - 20kHz
- Impedance: 8Ω

ITEM	U/M
PAS11501	Pair

- Sensitivity: 90dB 1W/1m
- Includes Thin-Bezel Grilles held by Neo Magnets
- Diameter x Depth: 7¾" x 3¼"
- Ceiling Cut Out: 611/16"

