

COYOTE® TERMINAL CLOSURE

SINGLE AND DUAL CHAMBER

The **COYOTE Terminal Closure** is the ideal choice for network designs that can be adapted as your network grows. Externally mounted OptiTap® hardened adapters allow for future installation of drops without closure re-entry. Additional drop capacity can be achieved through cable entry ports in the closure base, providing additional flexibility to support closures deeper in your network. The patented dual chamber design provides two distinct chambers that can be configured differently. A sealed window designed within the dual chamber allows fiber to be passed between chambers. The COYOTE Terminal Closure family is the adaptable choice for today's networks, where change is the only constant.

FEATURES AND BENEFITS

- Available in 6, 9, or 12-Port OptiTap covers
- Designed to permit field installation and removal of hardened adapters
- Provided with SC/APC pigtail kits
- Internal organizer manages buffer tube or ribbon
- Flexible grommet sealing technology supports a wide range of flat and round cable profiles
- Flame-retardant kits available
- Designed and tested in accordance with Telcordia® GR-771-CORE Buried, Underground, IP-68 Rated Requirements

COYOTE® SINGLE CHAMBER TERMINAL CLOSURE

Specifications

Catalog Number	800012002, 8006993, 8006953, 8006954, 8006955, 800012003, 80061067
Splice Capacity (Maximum) – Single Fusion (Low Profile, 80809958), Single Fusion (Low Profile, 80813152), Single Fusion (Deep Profile, 80808945), Mass Fusion (Deep Profile, LGSTR144)	96, 144, 80, 288
Number of Splice Trays – 80809958, 80813152, 80808945, LGSTR144	4, 4, 2, 2
Cable Ports ¹	4 (2 at each end)
Cable Diameters	0.093" – 1.20" (2.4 – 30.5 mm) and Flat Drop
Adapter Quantity (Maximum)	12
Configuration	In-Line or Butt
Application	Direct Bury, Below Grade, Pole/Wall, Aerial
Ingress Protection	In accordance with Telcordia® GR-771-CORE, Buried, Underground; IP-68
Size ²	18.7" L x 10.0" W x 5.1" H (475 x 254 x 130 mm)

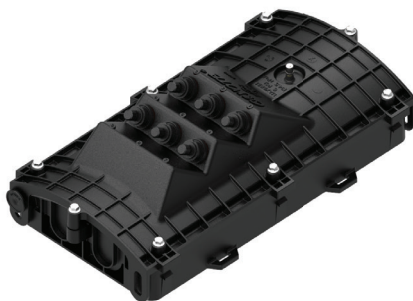
¹ Multi-hole grommets allow for more than one cable to enter each cable port.

² Outermost part of the assembly; includes the hardened adapters

COYOTE Single Chamber Terminal Kit Contents

Catalog Number	Description	Cover		
		Cover Type	Adapter Quantity	Plug Quantity
800012002	COYOTE Single Chamber Terminal Closure Includes – 2 OptiTap® Adapters	6-Port	2	4
8006993	COYOTE Single Chamber Terminal Closure Includes – 3 OptiTap Adapters	6-Port	3	3
8006953	COYOTE Single Chamber Terminal Closure Includes – 4 OptiTap Adapters	6-Port	4	2
8006954	COYOTE Single Chamber Terminal Closure Includes – 6 OptiTap Adapters	6-Port	6	0
8006955	COYOTE Single Chamber Terminal Closure Includes – 8 OptiTap Adapters	9-Port	8	1
800012003	COYOTE Single Chamber Terminal Closure Includes – 9 OptiTap Adapters	9-Port	9	0
80061067	COYOTE Single Chamber Terminal Closure Includes – 12 OptiTap Adapters	12-Port	12	0

All kits include (1) Closure Assembly, (2) 1-Hole Grommets 0.40" – 0.60" (10.2 – 15.2 mm), (1) 2-Hole Grommet 0.42" – 0.60" (10.7 – 15.2 mm), (1) 4-Hole Grommet 0.30" – 0.43" (7.6 – 10.9 mm), (1) Splice Tray (Cat. No. 80808945), Pigtails and Cable Restraint Hardware



6-Port COYOTE Single Chamber
Terminal Closure
Catalog Number: 8006954



9-Port COYOTE Single Chamber
Terminal Closure
Catalog Number: 800012003



12-Port COYOTE Single Chamber
Terminal Closure
Catalog Number: 80061067



COYOTE® DUAL CHAMBER TERMINAL CLOSURE

Specifications

Catalog Number	80061029, 800011830, 8006991, 800012140, 800012605, 800011839, 8006956
Splice Capacity (Maximum) – Single Fusion (Low Profile, 80809958), Single Fusion (Low Profile, 80813152), Single Fusion (Deep Profile, 80808945), Mass Fusion (Deep Profile, LGSTR144)	192, 288, 160, 576
Number of Splice Trays – 80809958, 80813152, 80808945, LGSTR144	8, 8, 4, 4
Cable Ports ¹	8 (4 at each end)
Cable Diameters	0.093" – 1.20" (2.4 – 30.5 mm) and Flat Drop
Adapter Quantity (Maximum)	24
Configuration	In-Line or Butt
Application	Direct Bury, Below Grade, Pole/Wall, Aerial
Ingress Protection	In accordance with Telcordia® GR-771-CORE, Buried, Underground; IP-68
Size ²	18.7" L x 10.0" W x 10.3" H (475 x 254 x 262 mm)

¹ Multi-hole grommets allow for more than one cable to enter each cable port.

² Outermost part of the assembly; includes the hardened adapters

COYOTE Dual Chamber Terminal Kit Contents

Catalog Number	Description	Cover 1			Cover 2		
		Cover Type	Adapter Quantity	Plug Quantity	Cover Type	Adapter Quantity	Plug Quantity
80061029	COYOTE Dual Chamber Terminal Closure Includes – 6 OptiTap® Adapters	6-Port	6	0	Standard	N/A	
800011830	COYOTE Dual Chamber Terminal Closure Includes – 12 OptiTap Adapters	6-Port	6	0	6-Port	6	0
8006991	COYOTE Dual Chamber Terminal Closure Includes – 8 OptiTap Adapters	9-Port	8	1	Standard	N/A	
800012140	COYOTE Dual Chamber Terminal Closure Includes – 9 OptiTap Adapters	9-Port	9	0	Standard	N/A	
800012605	COYOTE Dual Chamber Terminal Closure Includes – 24 OptiTap Adapters	12-Port	12	0	12-Port	12	0
800011839	COYOTE Dual Chamber Terminal Closure for Direct Splice Applications	Standard	N/A		Standard	N/A	
8006956	COYOTE Dual Chamber Terminal Closure with Internal Bulkhead with 6 SC/APC Adapters	Standard	N/A		Standard	N/A	

All kits include (1) Closure Assembly, (2) 1-Hole Grommets 0.40" – 0.60" (10.2 – 15.2 mm), (1) 2-Hole Grommet 0.42" – 0.60" (10.7 – 15.2 mm), (1) 4-Hole Grommet 0.30" – 0.43" (7.6 – 10.9 mm), (1) Splice Tray (Cat. No. 80808945), Pigtails and Cable Restraint Hardware



9-Port COYOTE Dual Chamber Terminal Closure
Catalog Number: 800012140



24-Port COYOTE Dual Chamber Terminal Closure
Catalog Number: 800012605



Direct Splice or Cross-Connect
COYOTE Dual Chamber Terminal Closure
Catalog Number: 800011839 or 8006956

ACCESSORIES AND MOUNTING BRACKETS

3

HARDENED CONNECTIVITY CLOSURES

COYOTE Terminal Closure Accessories

Catalog Number	Description
80809958	Splice Tray, COYOTE LITE-GRIP® Short, Low Profile, 24 CT., Single Fusion
80813152	Splice Tray, COYOTE LITE-GRIP Short, Low Profile, 36 CT., Single Fusion
80808945	Splice Tray, COYOTE LITE-GRIP Short, Deep Profile, 40 CT., Single Fusion
LGSTR144	Splice Tray, COYOTE LITE-GRIP Short, Deep Profile, 144 CT., Mass Fusion
8003993	Heat Shrink Splice Protector Kit – Includes (12) 40 mm Mass Fusion
80808187	Heat Shrink Splice Protector Kit – Includes (12) 40 mm Single Fusion
8003509	Heat Shrink Splice Protector Kit – Includes (12) 60 mm Single Fusion
80807972	Hardened Adapter Installation Tool
8003715	OptiTap® Adapter Kit – Includes (1) OptiTap Adapter and (1) Installation Tool
8004115	Bulk Pack of OptiTap Adapters – Includes (10) OptiTap Adapters
8003724	Plug Kit – Includes (1) Plug and (1) Installation Tool
8004060	Bulk Pack of Plugs – Includes (10) Plugs
COYTRM-2PK-SCA	Pigtail Kit – Includes (2) SC/APC Pigtails
COYTRM-3PK-SCA	Pigtail Kit – Includes (3) SC/APC Pigtails
COYTRM-4PK-SCA	Pigtail Kit – Includes (4) SC/APC Pigtails

COYOTE Terminal Single Chamber Mounting Brackets

Catalog Number	Description
8003797	Aerial Mounting Bracket – Strand Applications
8004179	Horizontal Aerial Mounting Bracket – Strand Applications
8003864	Aerial Mounting Bracket – ADSS Applications
8003703	Pole/Wall Mounting Bracket
8003835	Universal Mounting Bracket – Handhole Applications
8003706	Swing Arm Mounting Bracket

COYOTE Terminal Dual Chamber Mounting Brackets

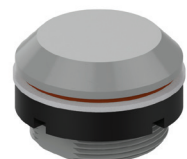
Catalog Number	Description
8003705	Aerial Mounting Bracket – Strand Applications
8003703	Pole/Wall Mounting Bracket
8003706	Swing Arm Mounting Bracket



Hardened Adapter Installation
Tool



OptiTap® Adapter



Plug