

Step-by-Step Guide: Setting Up and Installing OUT-CONN6

Underground speaker cables face greater hazards compared to indoor installations. That's why we suggest OUT-CONN6: an affordable, easy-to-install solution ideal for wire splices exposed to condensation, water, vapors, dust, and dirt. The OUT-CONN6 provides insurance against corrosion and damage, thanks to the gel sealant box that keeps your wires dry. GEL CLAMSHELL IS ONE TIME USE ONLY.

STEP 1

When running your cables, make a loop using a zip tie for each satellite speaker.



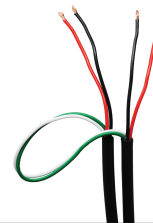
STEP 2

Strip the outer layer of the cable at the top of the loop to expose the wires.



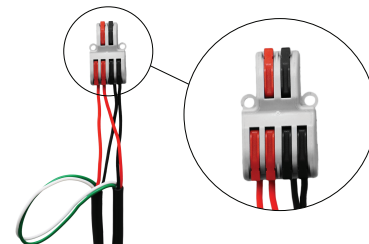
STEP 3

Cut and strip 5/8" of the insulation on the two wires that you want, leaving you with four exposed wires.



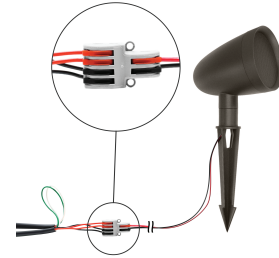
STEP 4

Connect your four exposed wires to the **outdoor connector** in the four slots that are on the same side. Connect red to red and black to black.



STEP 5

Then connect the satellite speaker's wires to that same **outdoor connector** on the other side where the two slots are. Connect red to red and black to black.



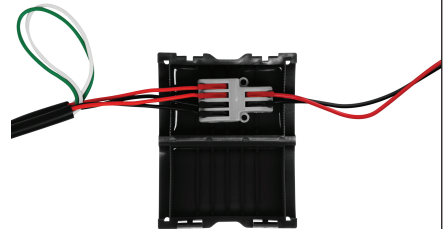
STEP 6

Take the **gel sealant box**, open it, and remove the paper. You can discard the paper.



STEP 7

Place the **outdoor connector** in the center of the **silicone sealant box** and push the connector into the gel to properly seat it in the clamshell.



STEP 8

Close the **gel sealant box**. This will create a protective, watertight seal for your connection. Ensure you squeeze clamshell tightly so that gel fully encases the connector and wires.



Gel clamshell cannot be reused.

WATCH THE FULL SET UP!

Scan the QR code to watch a comprehensive video on how to install the OUT-CONN6.

