

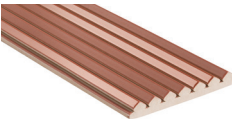
Ribbella™ 3D grooved extruded porcelain wall tile was inspired by geometric and minimalist lines with an Art Deco flair. These tiles feature delicate grooves that create a sense of movement, bringing life and dynamism to walls. The high gloss on select grooves enhances the visual effect, playing beautifully with light and shadow to add depth and dimension. Available in five design-forward colors, this collection will transform any space into a work of art.

RIBBELLA™
Extruded Porcelain





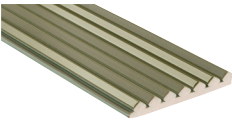
Brick



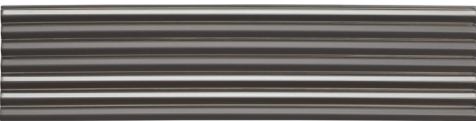
Lux Brick



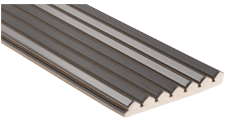
Forest



Lux Forest



Charcoal



Lux Charcoal



Ivory



Lux Ivory





White



Lux White

*Ribbella features a distinctive design where sections of the tile have a higher gloss, creating a striking offset appearance. When installed, the tiles will be perfectly aligned, but the varying gloss levels will give the illusion of misalignment, enhancing the aesthetic.

*Grout not needed for installation

Sizes					
	4"x15" 3.93"x15.35"	3"x15" (Lux Only) 3.15"x15.35"			
Thickness	12mm	40mm			
Testing	Breaking Strength C648	Chemical Resistance C650	Water Absorption C373	Scratch Hardness MOHS	Shade Variation Rating
Results*	Check Website	Check Website	Check Website	Check Website	Check Website

Scan QR Code for more product details.



-  Sustainability Attributes
- Health Product Declaration (HPD) provided upon request
 - Product Packaging is 100% recyclable
 - VOC Free



*For more information visit www.emser.com. Always consult a professional for proper usage and installation.