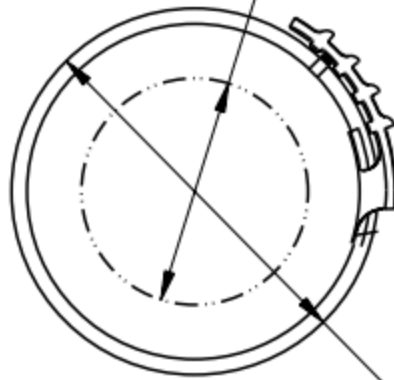


Ø 1.18 MAX PINTING AREA
[30,0]



(A1)

Ø 1.81-1.91
[46,0-48,5]



(A2)

.40-.50
[10,1-12,5]



DISCLAIMER

THIS INFORMATION IS PROVIDED AS A GENERAL GUIDE, INCLUDING DIMENSIONS. IT IS THE CUSTOMER'S RESPONSIBILITIES TO SELECT THE PROPER CONTAINER FOR PRODUCT AND APPLICATION COMPATIBILITY.

DISTRIBUTED BY:



REF NO.:

DWG30363

DESCRIPTION:

3/4 in HDPE Tamper Evident Cap for Vise Grip II