

# Lightology

lightology.com  
866-954-4489  
05-18-26

Project: \_\_\_\_\_

Company: \_\_\_\_\_

Location: \_\_\_\_\_ Fixture Type: \_\_\_\_\_

SPEC #: **EUF543344**

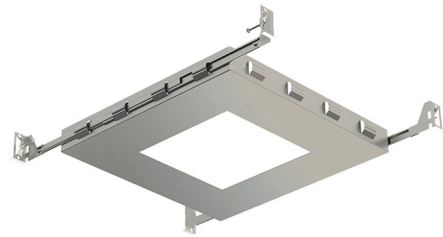
Approved On: \_\_\_\_\_ Approved By: \_\_\_\_\_

## Amigo 3IN SQ Trimless New Construction Mounting Plate By Eurofase



### Description

30536 3 Inch Square Aperture Non-IC New Construction Mounting Plate for use with 120 volt LED lamp 28717 and 28718 remodel housings with flangeless (trimless) trim, sold separately. 6 inch height when paired with remodel housing. 3 inch square cutout.



Shown in steel

### Specifications

REFLECTOR/BAFFLE COLOR . . . . . N/A  
BODY FINISH . . . . . Steel  
WATTAGE . . . . . 15W  
DIMMER . . . . . N/A  
DIMENSIONS . . . . . 9.5"W x 1.38"H x 9"D  
BULB NOT INCLUDED . . . . . 1 x LED/15W/120V LED  
COUNTRY OF ORIGIN . . . . . Canada

### Technical Information

APERTURE SIZE . . . . . 3.000"  
APERTURE SHAPE . . . . . Square  
HOUSING HEIGHT . . . . . 6"  
HOUSING TYPE . . . . . New Construction NON IC  
CEILING TYPE . . . . . Drywall Trimless/Flush



CLICK TO VIEW PRODUCT

Notes: