



Portable Window Air Conditioner Replacement Window Exhaust Kit PORTV592PA

Compatible with Perfect Aire, Pelonis, Danby, and other major brands

Can be used with other brands with a 5-14/16" diameter hose, but may require the original hose collar.

Works with Perfect Aire Models: PORT8000, PORT10000, PORT12000, PORT14000, 2PORT12000, 2PORT14000, 3PORT8500A, 3PORT10000A, 3PORT12000, 3PORT13500, PORTHP14000, PORTQ12000, PORTH12000, NP10000, PORT8000A, PORT10000A, PORT120000A, 2PORT9000A, 2PORT10000A

INSTALLATION INSTRUCTIONS

Your window slider kit has been designed to fit most standard vertical and horizontal window applications. However, it may be necessary for you to modify some aspects of the installation procedures for certain types of windows. The window slider kit can be fastened with screws.

NOTE: If the window opening is less than the minimum length of the window slider kit, cut the end without the hole in it short enough to fit the window opening. Never cut the window kit attachment piece with the vent hose in it.

REPLACEMENT KIT INCLUDES



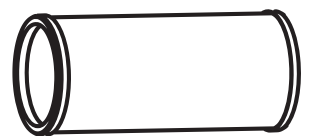
1 - Round Adapter Models

PORT8000, PORT10000, PORT12000, PORT14000, 2PORT12000, 2PORT14000, 3PORT12000, 3PORT13500, PORTHP14000, PORTQ12000, PORTH12000



1 - Square Adapter Models

NP10000, PORT8000A, PORT10000A, PORT120000A, 2PORT9000A, 2PORT10000A, 3PORT8500A, 3PORT10000A



1 - Exhaust Hose



1 - Security Bracket and 2 - Screws



1 - Window Slider Adapter



1 - Bolt



2 - Foam Seal A (Adhesive)



2 - Foam Seal B (Adhesive)



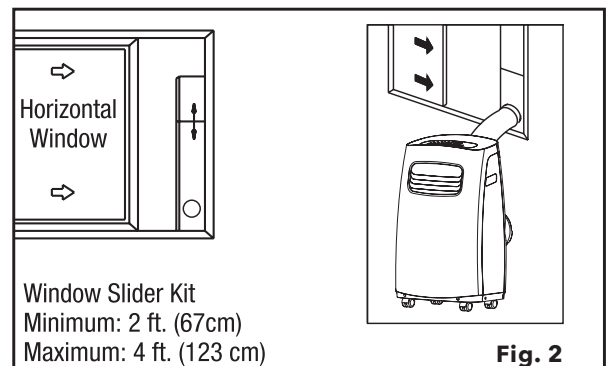
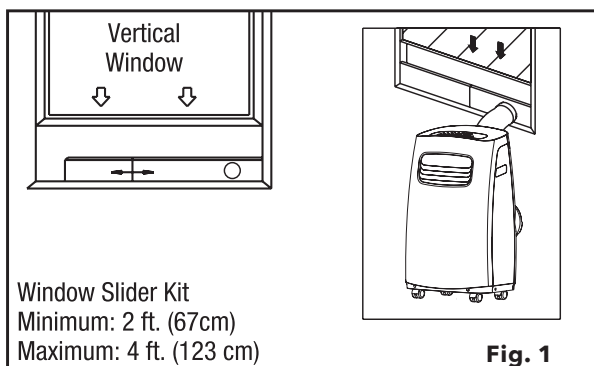
1 - Foam Seal C (Non-Adhesive)



1 - Window Slider A



1 - Window Slider B



EXHAUST HOSE ASSEMBLY

STEP 1 Fig 3

PREPARING THE EXHAUST HOSE ASSEMBLY

Slide the exhaust hose into the window slider adapter and unit adapter; it will snap automatically to the adapters.

STEP 2 Fig 4

INSTALL THE EXHAUST HOSE ASSEMBLY TO THE UNIT

Slide the exhaust hose assembly into the air outlet opening of the unit along the arrow direction, from left to right.

STEP 3 Fig 5

PREPARING THE ADJUSTABLE WINDOW SLIDER

- Depending on the size of your window, choose the correct sliders and adjust accordingly. Sometimes cutting the slider may be necessary to properly install. Please take extra care when cutting, and cut only when absolutely necessary. Do not cut the hole in the window slider kit.
- If the length of the window requires two window sliders, use the bolt (included) to fasten the window sliders once they are adjusted to the proper length.

Fig. 3

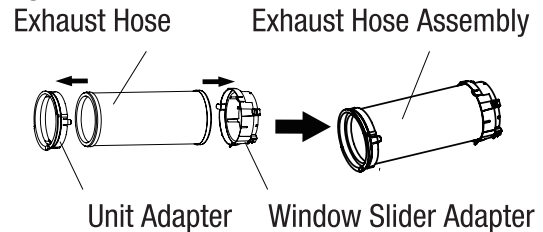


Fig. 4

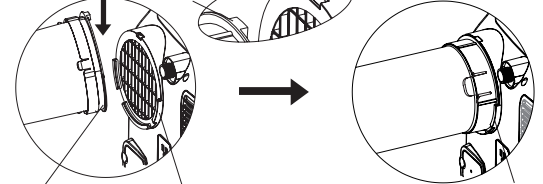
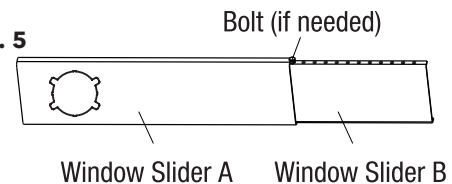


Fig. 5



WINDOW INSTALLATION

NOTE: The illustration shows a vertical double-hung window. This kit can also be used in horizontal sliding windows.

STEP 1 Fig 6

Cut the adhesive foam seal A and B strips to the proper lengths, and attach them to the window sash and frame as shown.

STEP 2 Fig 7

Insert the window slider assembly into the window opening.

STEP 3 Fig 8

Cut the non-adhesive foam seal C strip to match the width of the window. Insert the seal between the glass and the window frame to prevent air and insects from getting into the room.

STEP 4 Fig 9

If desired, install the security bracket with 2 screws as shown.

STEP 5 Fig 10

Insert the window slider adapter into the hole of the window slider.

NOTE: All the illustrations in this manual are for explanation purposes only. Your unit may be slightly different.

