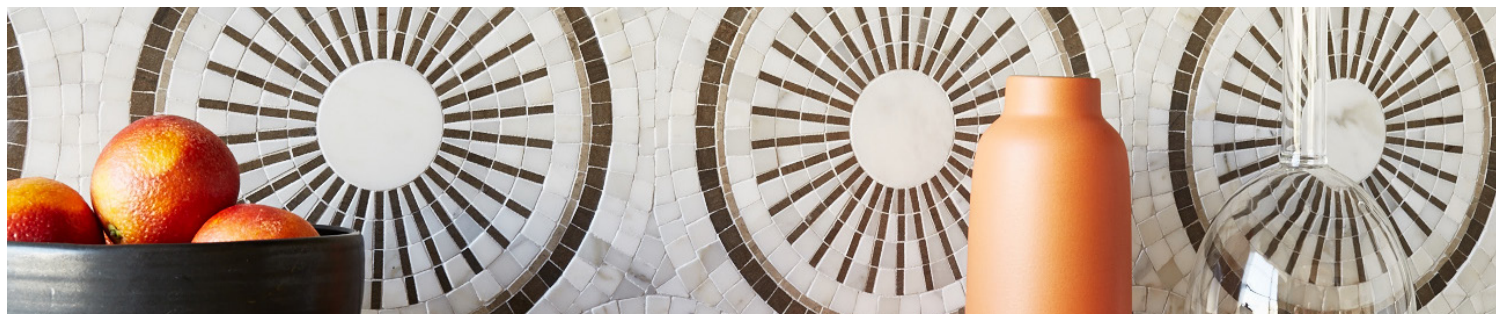




TANGENT

A Tangent is defined as “a line that touches but does not intersect a curve.” It is a word that describes geometry, but also one used to describe heading off in directions unknown. Both definitions are appropriate for our new collections of decorative stone mosaics, in which abstract geometry and mid century modern design influences merge with the beauty of natural stone, creating a richness that will beguile you anew each time you see it.

WALKER
ZANGER
STONE & TILE



Mosaic Pattern

APEX



Apex Cafe
7-5/8" x 11-15/16"
2TANCAFAPE



Apex Calacata
7-5/8" x 11-15/16"
2TANCALAPE



Apex Celeste
7-5/8" x 11-15/16"
2TANCELAPE

ASTRAL NIGHT



Astral Night
12-1/8" x 15-3/8"
2TANCALANI

CHEVRON



Chevron Ash
11-1/2" x 11-13/16"
2TANASHCHE



Chevron Calacata
11-1/2" x 11-13/16"
2TANCALCHE



Chevron Crema
11-1/2" x 11-13/16"
2TANCRECHE

HIVE



Hive Celeste
10-3/8" x 11-1/4"
2TANCELHIV



Hive Crema
10-3/8" x 11-1/4"
2TANCREHIV



Hive Calacata
10-3/8" x 11-1/4"
2TANCALHIV

HONEYCOMB



Honeycomb Ash
13" x 13-3/16"
2TANASHHON



Honeycomb Calacata
13" x 13-3/16"
2TANCALHON



Honeycomb Linen
13" x 13-3/16"
2TANLINHON

IPANEMA



Ipanema Crema
10-3/8" x 9-1/8"
2TANCREIPA



Ipanema Calacata
10-3/8" x 9-1/8"
2TANCALIPA

LATTICE



Lattice Ash
11-1/4" x 8-5/8"
2TANASHLAT

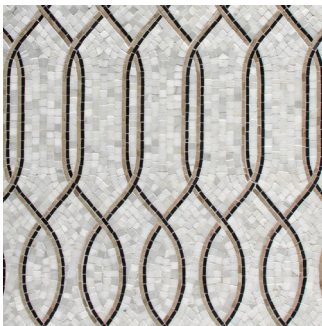


Lattice Calacata
11-1/4" x 8-5/8"
2TANCALLAT



Lattice Crema
11-1/4" x 8-5/8"
2TANCRELAT

MERGE



Merge Calacata, Ash
Grey, Black
16-1/2" x 9-1/4"
2TANCALMER



Merge Linen
16-1/2" x 9-1/4"
2TANLINMER

PRISM

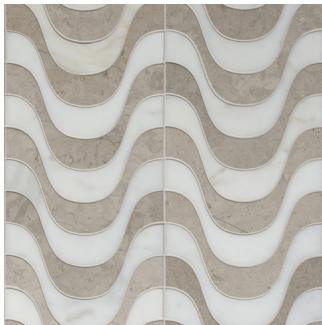


Prism Ash
11-1/4" x 9-1/8"
2TANASHPRI



Prism Calacata
11-1/4" x 9-1/8"
2TANCALPRI

RIPPLE



Ripple Ash
7-5/8" x 12-1/2"
2TANASHRIP



Ripple Cafe
7-5/8" x 12-1/2"
2TANCAFRIP



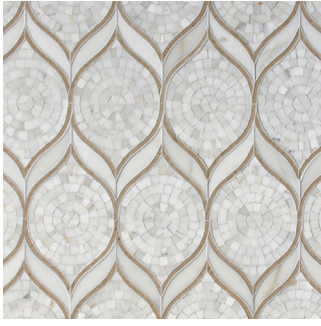
Ripple Calacata
7-5/8" x 12-1/2"
2TANCALRIP

VECTOR



Vector Calacata
10" x 10"
2TANCALVEC

ZEPHYR



Zephyr Calacata
7-5/8" x 11-7/8"
2TANCALZEP



Zephyr Crema
7-5/8" x 11-7/8"
2TANCREZEP

FACET



Facet Ash
8" x 15-1/4"
2TANASHFAC



Facet Calacata
8" x 15-1/4"
2TANCALFAC

Field

2 x 6



2 x 6 Ash
2" x 6"
2TANASH2X6



2 x 6 Calacata
2" x 6"
2TANCAL2X6



2 x 6 Crema
2" x 6"
2TANCRE2X6

Borders

ELLIPSE



Ellipse Ash
6-1/2" x 14-3/8"
2TANASHHELLB



Ellipse Crema
6-1/2" x 14-3/8"
2TANCREELLB

IPANEMA



Ipanema Ash
6-3/8" x 13-5/8"
2TANASHIPAB



Ipanema Crema
6-3/8" x 13-5/8"
2TANCREIPAB

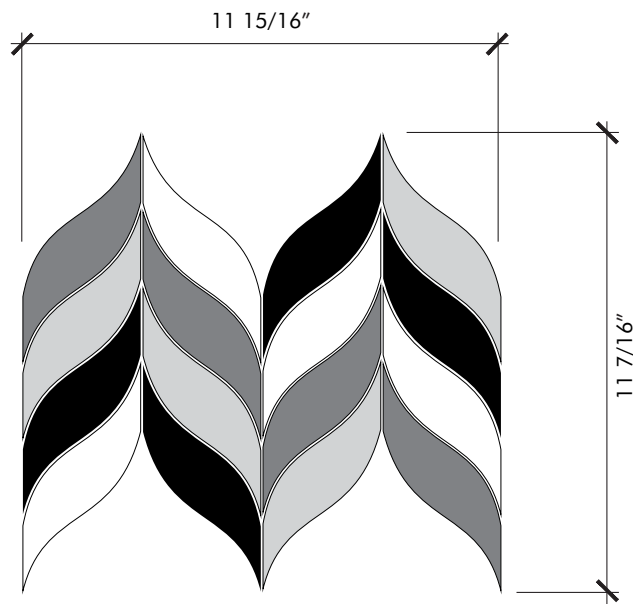
RIPPLE



Ripple Ash
5-3/8" x 12-1/2"
2TANASHRIPB



Ripple Cafe
5-3/8" x 12-1/2"
2TANCAFIPB



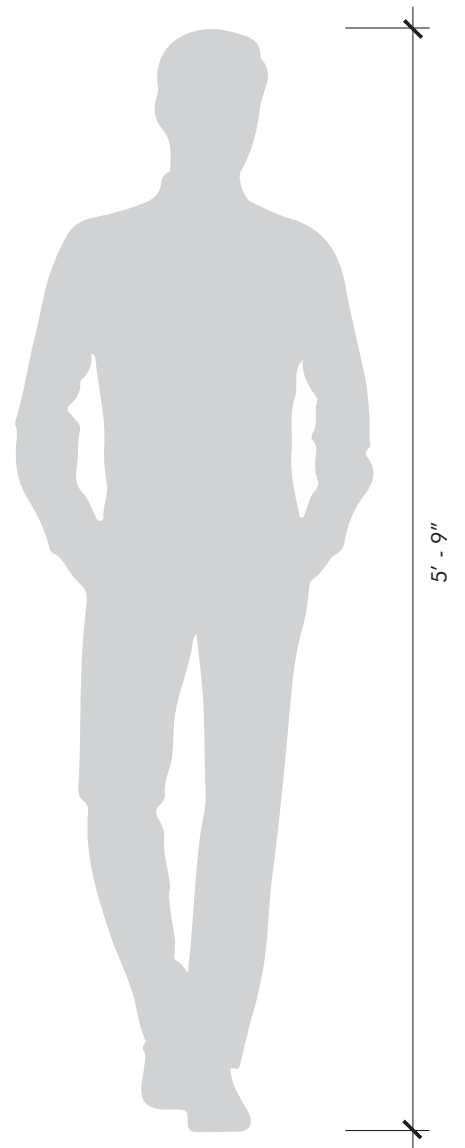
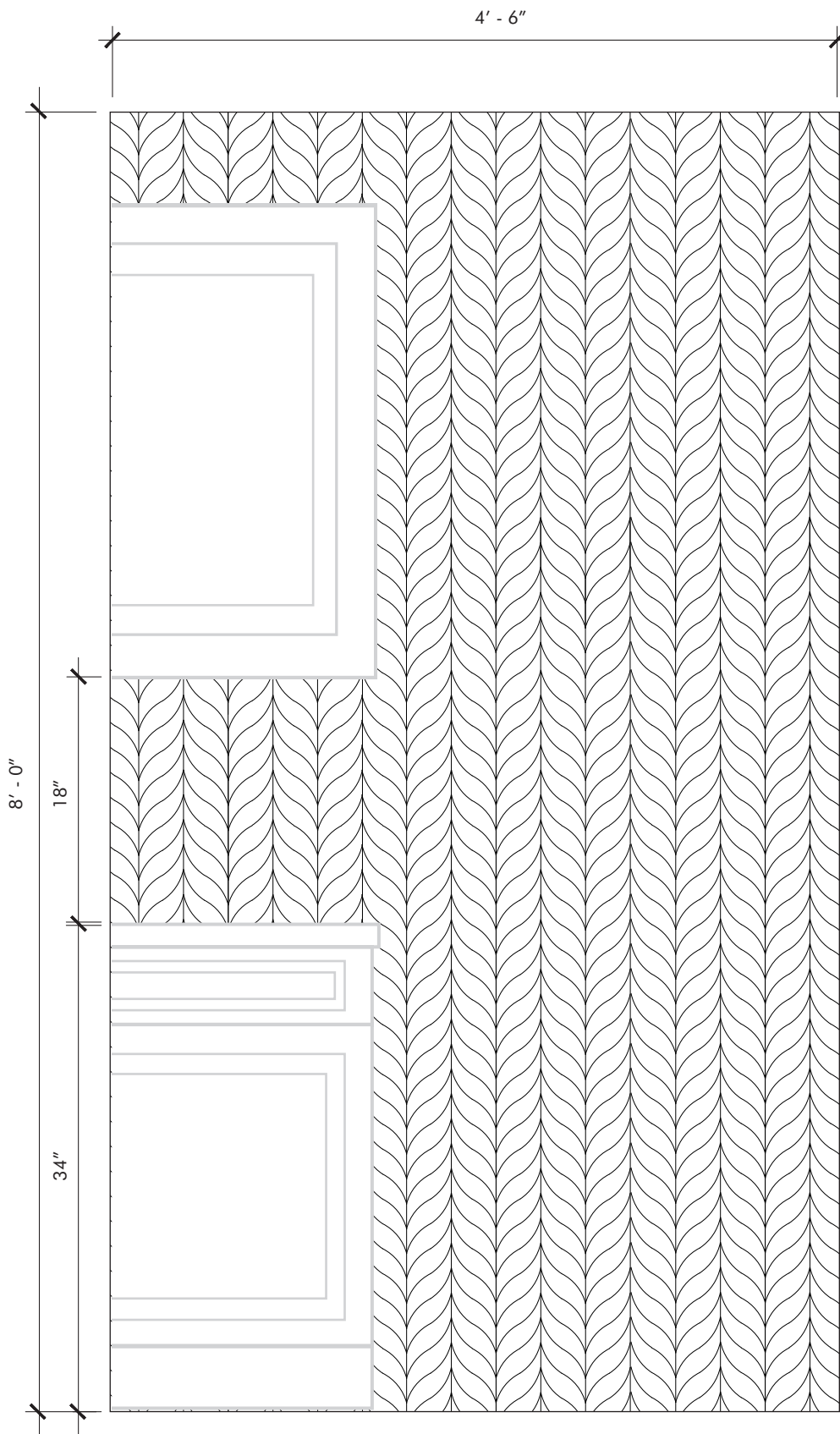
Material	Stone
Finish	Honed
Thickness	3/8"
Cut and Fill Size	7 5/8" x 11 15/16"
Square Feet/Piece	0.639
Mounting	Mesh
Available Colors	
Cafe (Cafe Bruno, Crema Vecchia, French Linen, Lagos Gold)	
Calacata	
Celeste (Ash Gray, Flannel, Calacata, Celeste Blue)	

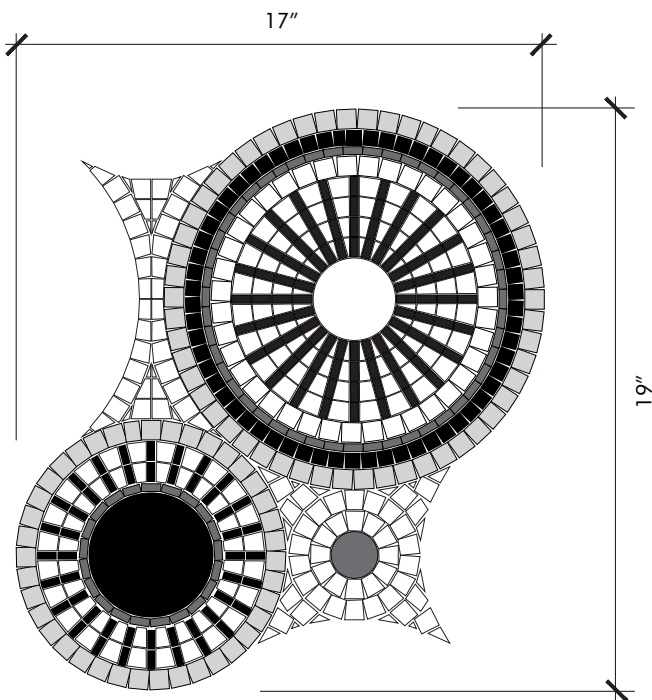
Usage		Cafe	Calacata	Celeste
	Commercial Interior Floor		✓	
	Commercial Interior & Exterior Wall	✓	✓	interior only
	Residential Bathroom Floor	✓	✓	✓
	Residential Interior Floor	✓	✓	✓
	Residential Interior & Exterior Wall	✓	✓	interior only
	Shower Floor		✓	
	Shower Wall	✓	✓	
	Steam Showers	wall only	wall only	

Material Data		Cafe	Calacata	Celeste
	Color Variation	✓		✓
	Color Variation		✓	
Sealing				
	Must be sealed for use in areas that experience frequent wet conditions	✓	✓	✓
Cleaning and Maintenance				
	Protect from harsh abrasive cleaners and tools <i>Recommended:</i> Oceanscare or Dry Treat products for all natural stone			

Notes:

- We recommend sealing all natural stone products with a penetrating sealer and sealing all porous non-polished stone (limestone, tumbled marble, etc.) prior to grouting. This prevents grout from staining or affecting the color of the stone. Stone is a natural product, and care should be taken to protect it from harsh abrasive cleaners and abrasive cleaning tools.
- White thin-set or mortar is required: light limestones, tumbled stones, "antiqued stones", and light colored marbles
- Likely identified with dry seams, pits, fossils and glass veins that are often filled at the factory. The fill may perhaps leak through the voids. In this case, refilling these voids may be a necessary maintenance procedure.





Material	Stone
Finish	Honed
Thickness	3/8"
Cut and Fill Size	12 1/8" x 15 3/8"
Square Feet/Piece	1.3001
Mounting	Mesh
Available Colors Calacata (Ash Gray, Calacata, Flannel)	

Usage



Commercial Interior Wall



Residential Bathroom Floor



Residential Interior Wall



Residential Interior Floor

Material Data

MEDIUM



Color Variation

Sealing



Must be sealed for use in areas that experience frequent wet conditions

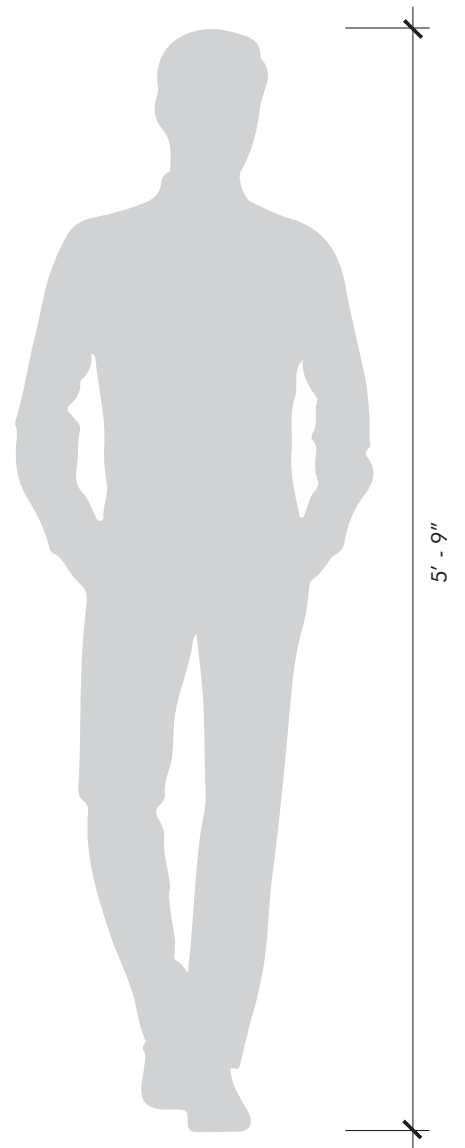
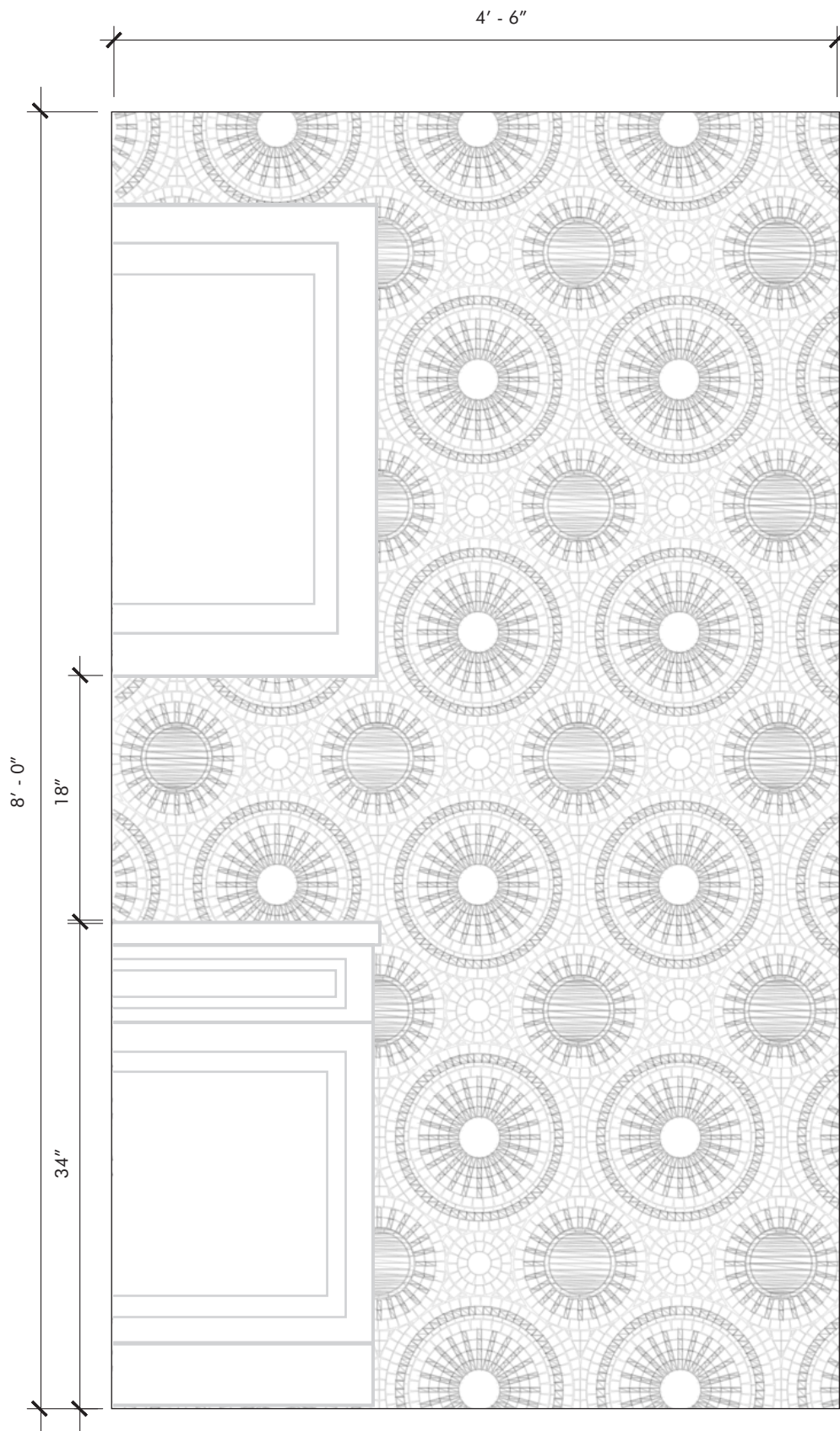
Cleaning and Maintenance

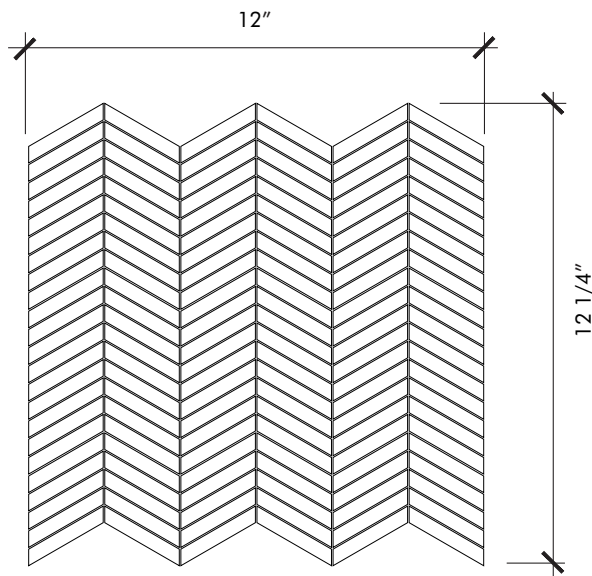


Protect from harsh abrasive cleaners and tools
Recommended: Oceancare or Dry Treat products

Notes:

- We recommend sealing all natural stone products with a penetrating sealer and sealing all porous non-polished stone (limestone, tumbled marble, etc.) prior to grouting. This prevents grout from staining or affecting the color of the stone. Stone is a natural product, and care should be taken to protect it from harsh abrasive cleaners and abrasive cleaning tools.
- White thin-set or mortar is required: light limestones, tumbled stones, "antiqued stones", and light colored marbles
- Likely identified with dry seams, pits, fossils and glass veins that are often filled at the factory. *The fill may perhaps leak through the voids. In this case, refilling these voids may be a necessary maintenance procedure.*





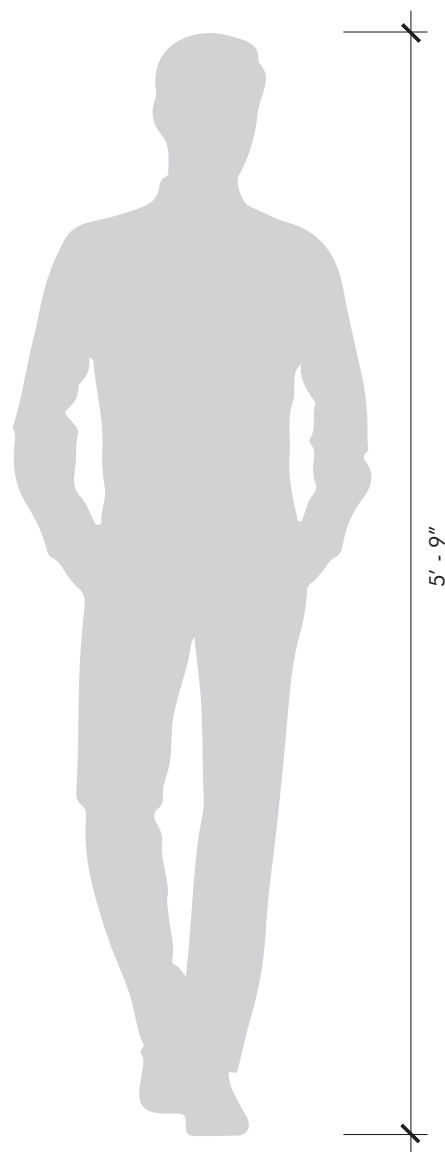
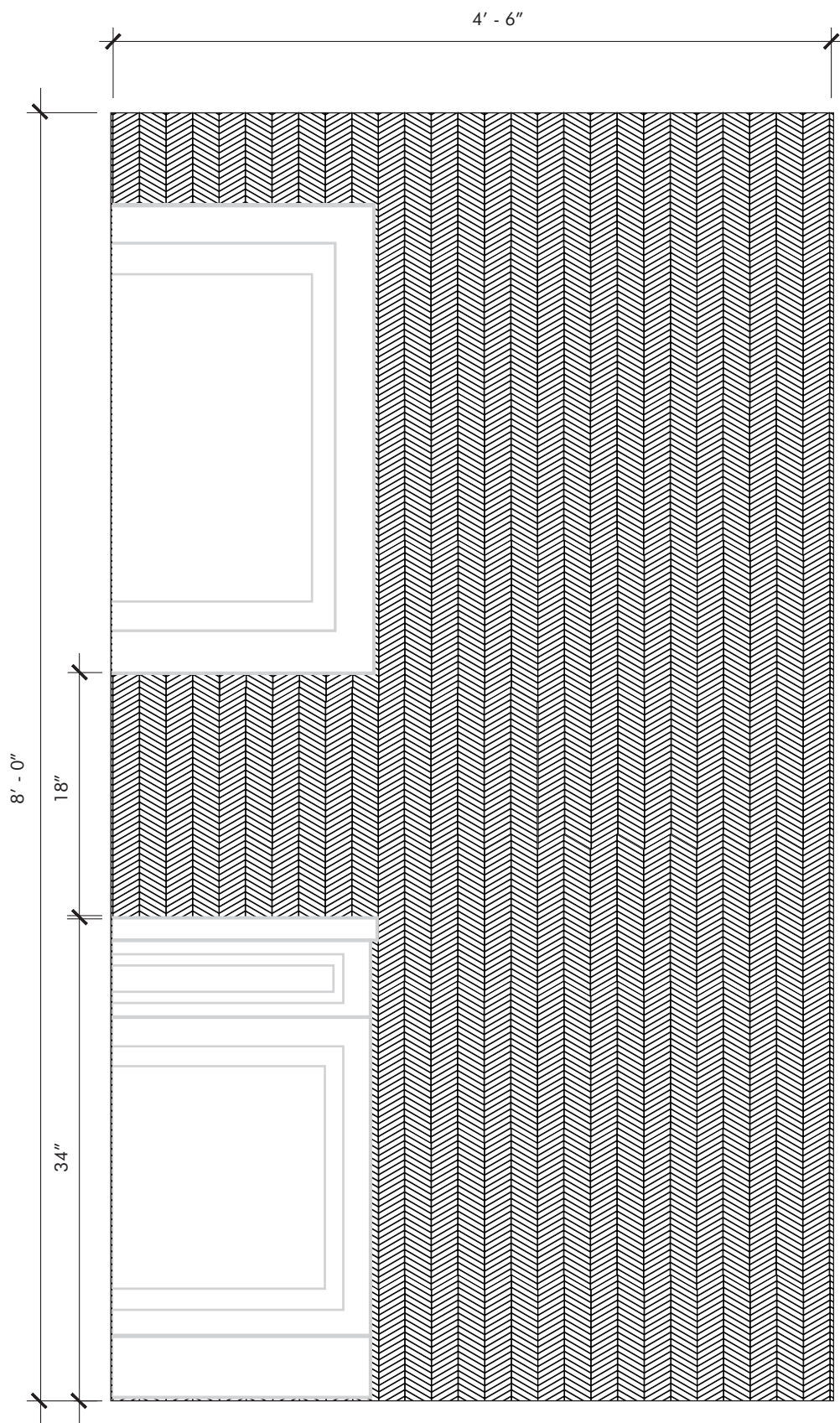
Material	Stone
Finish	Honed
Thickness	3/8"
Cut and Fill Size	11 1/2" x 11 13/16"
Square Feet/Piece	0.9434
Mounting	Mesh
Available Colors	
Ash	
Crema	
Calacata	

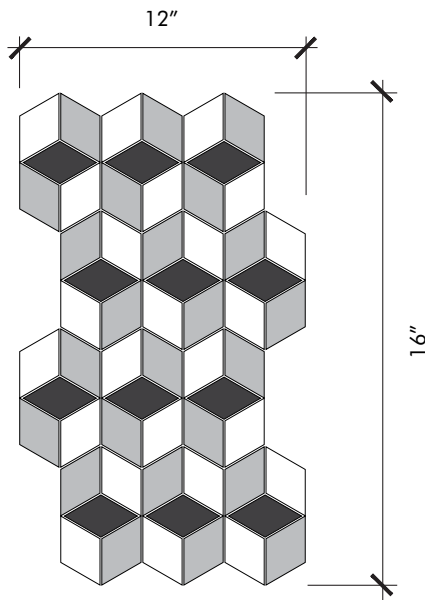
Usage		Ash	Calacata	Crema
	Commercial Interior Floor		✓	
	Commercial Interior & Exterior Wall	interior only	✓	interior only
	Residential Bathroom Floor	✓	✓	✓
	Residential Interior Floor	✓	✓	✓
	Residential Interior & Exterior Wall	interior only	✓	interior only
	Shower Floor		✓	✓
	Shower Wall		✓	✓
	Steam Showers		wall only	

Material Data		Ash	Calacata	Crema
	Color Variation	✓		✓
	Color Variation		✓	
Sealing				
	Must be sealed for use in areas that experience frequent wet conditions	✓	✓	✓
Cleaning and Maintenance				
	Protect from harsh abrasive cleaners and tools Recommended: Oceanscare or Dry Treat products			

Notes:

- We recommend sealing all natural stone products with a penetrating sealer and sealing all porous non-polished stone (limestone, tumbled marble, etc.) prior to grouting. This prevents grout from staining or affecting the color of the stone. Stone is a natural product, and care should be taken to protect it from harsh abrasive cleaners and abrasive cleaning tools.
- White thin-set or mortar is required: light limestones, tumbled stones, "antiqued stones", and light colored marbles
- Likely identified with dry seams, pits, fossils and glass veins that are often filled at the factory. The fill may perhaps leak through the voids. In this case, refilling these voids may be a necessary maintenance procedure.





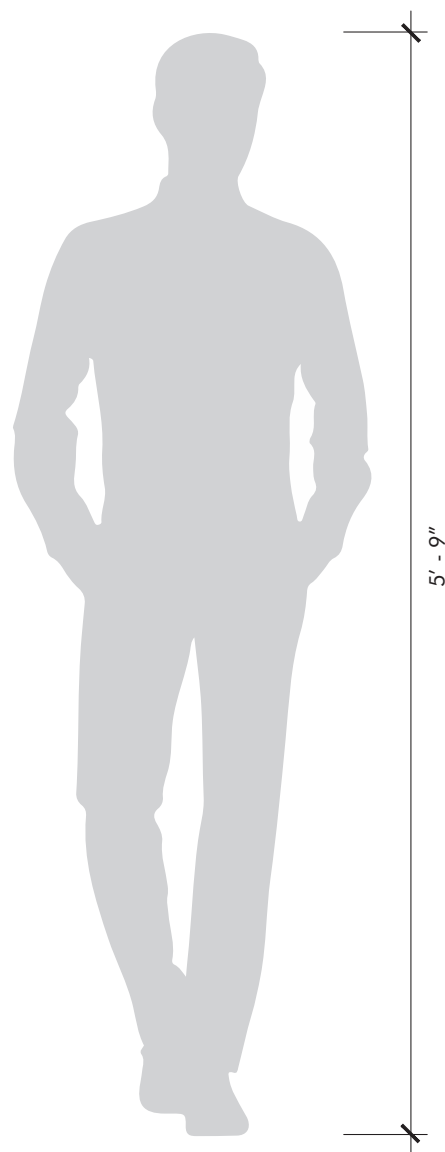
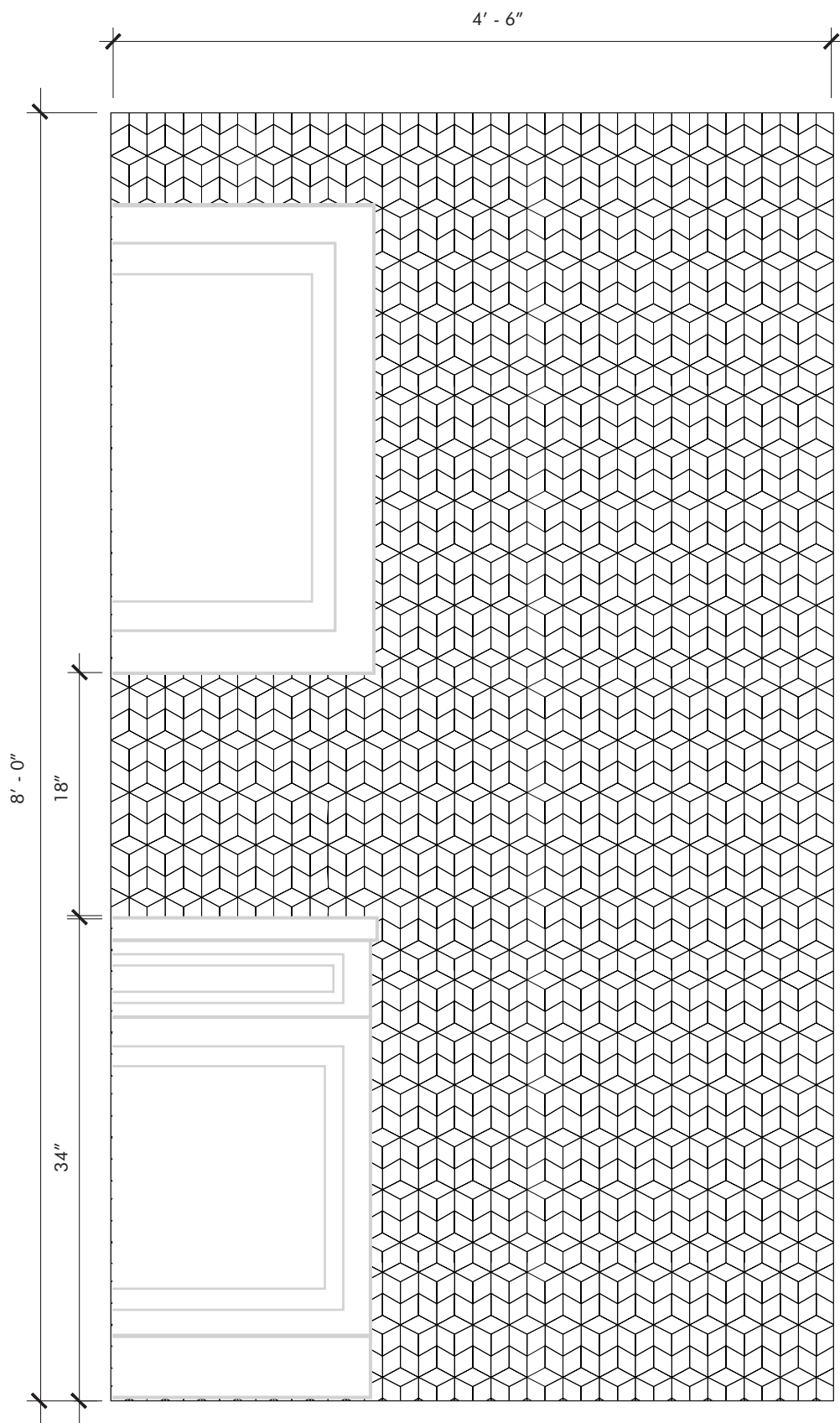
Material	Stone
Finish	Honed
Thickness	3/8"
Cut and Fill Size	8" x 15 1/4"
Square Feet/Piece	0.8475
Mounting	Mesh
Available Colors Ash (Ash, Calacata, Flannel) Calacata (Calacata)	

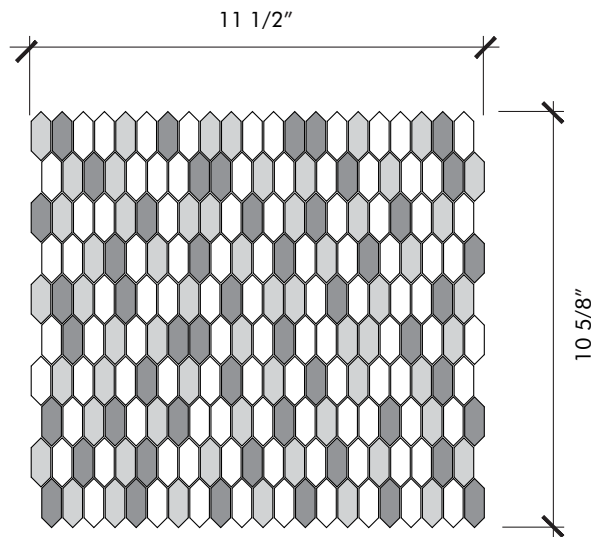
Usage		Ash	Calacata
	Commercial Interior Floor		✓
	Commercial Wall Interior & Exterior	interior only	✓
	Residential Bathroom Floor	✓	✓
	Residential Interior Floor	✓	✓
	Residential Wall Interior & Exterior	interior only	✓
	Shower Floor		✓
	Shower Wall		✓
	Steam Showers		wall only

Material Data		Ash	Calacata
MEDIUM 	Color Variation	✓	
HIGH 	Color Variation		✓
Sealing			
	Must be sealed for use in areas that experience frequent wet conditions	✓	✓
Cleaning and Maintenance			
	Protect from harsh abrasive cleaners and tools <i>Recommended: Oceanscare or Dry Treat products</i>		

Notes:

- We recommend sealing all natural stone products with a penetrating sealer and sealing all porous non-polished stone (limestone, tumbled marble, etc.) prior to grouting. This prevents grout from staining or affecting the color of the stone. Stone is a natural product, and care should be taken to protect it from harsh abrasive cleaners and abrasive cleaning tools.
- White thin-set or mortar is required: light limestones, tumbled stones, "antiqued stones", and light colored marbles
- Likely identified with dry seams, pits, fossils and glass veins that are often filled at the factory. The fill may perhaps leak through the voids. In this case, refilling these voids may be a necessary maintenance procedure.





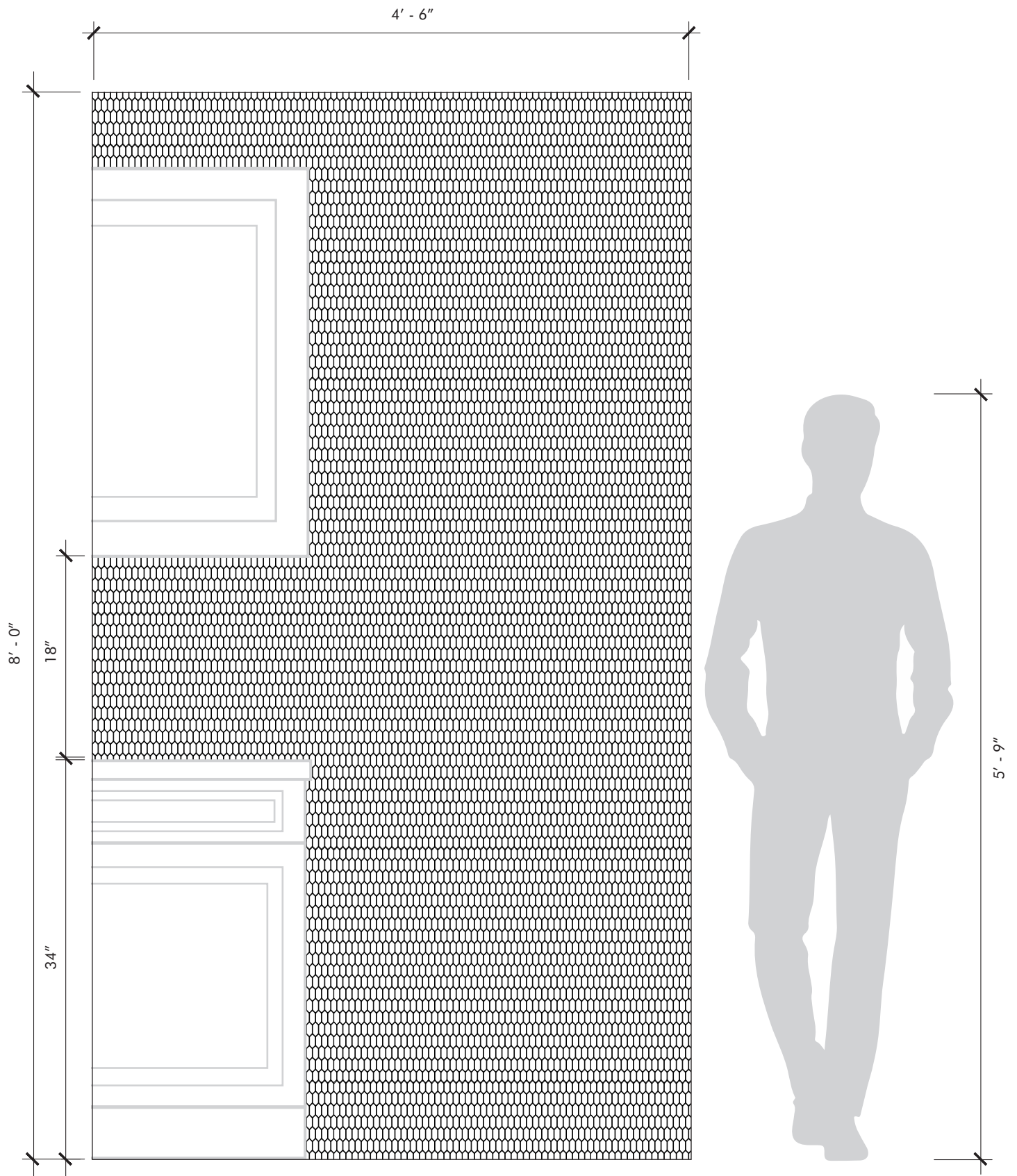
Material	Stone
Finish	Honed
Thickness	3/8"
Cut and Fill Size	9 5/8" x 10 1/2"
Square Feet/Piece	0.8130
Mounting	Mesh
Available Colors Calacata (Calacata) Celeste (Ash, Calacata, Celeste) Crema (Crema, Lagos Gold, Linen)	

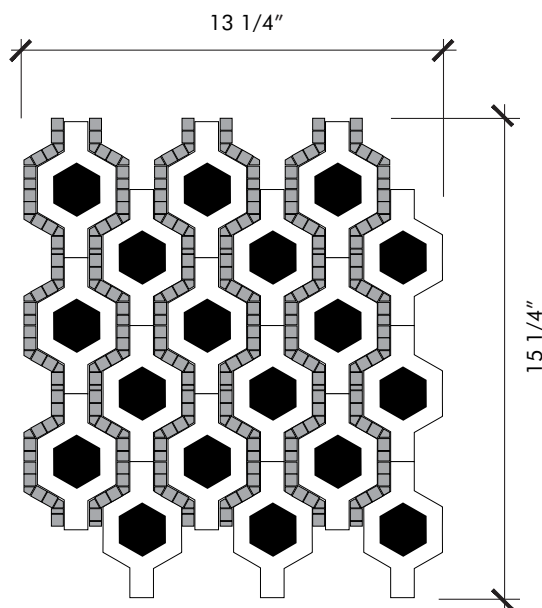
Usage		Calacata	Celeste	Crema
	Commercial Interior Floor	✓		
	Commercial Wall Interior & Exterior	✓	interior only	interior only
	Residential Bathroom Floor	✓	✓	✓
	Residential Interior Floor	✓	✓	✓
	Residential Wall Interior & Exterior	✓	interior only	interior only
	Shower Floor	✓		
	Shower Wall	✓		✓
	Steam Showers	wall only		

Material Data		Calacata	Celeste	Crema
MEDIUM 	Color Variation		✓	✓
HIGH 	Color Variation	✓		
Sealing				
	Must be sealed for use in areas that experience frequent wet conditions	✓	✓	✓
Cleaning and Maintenance				
	Protect from harsh abrasive cleaners and tools <i>Recommended: Oceanscare or Dry Treat products</i>			

Notes:

- We recommend sealing all natural stone products with a penetrating sealer and sealing all porous non-polished stone (limestone, tumbled marble, etc.) prior to grouting. This prevents grout from staining or affecting the color of the stone. Stone is a natural product, and care should be taken to protect it from harsh abrasive cleaners and abrasive cleaning tools.
- White thin-set or mortar is required: light limestones, tumbled stones, "antiqued stones", and light colored marbles
- Likely identified with dry seams, pits, fossils and glass veins that are often filled at the factory. The fill may perhaps leak through the voids. In this case, refilling these voids may be a necessary maintenance procedure.





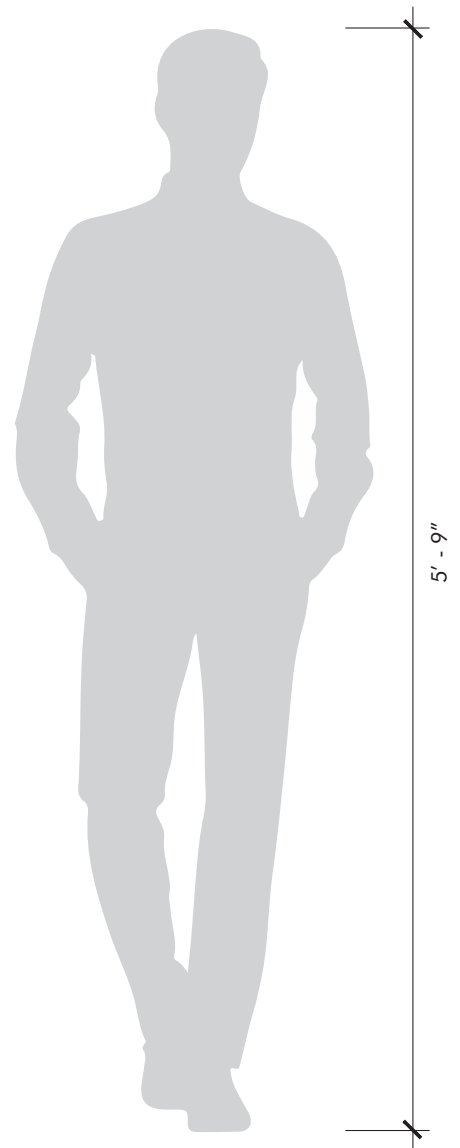
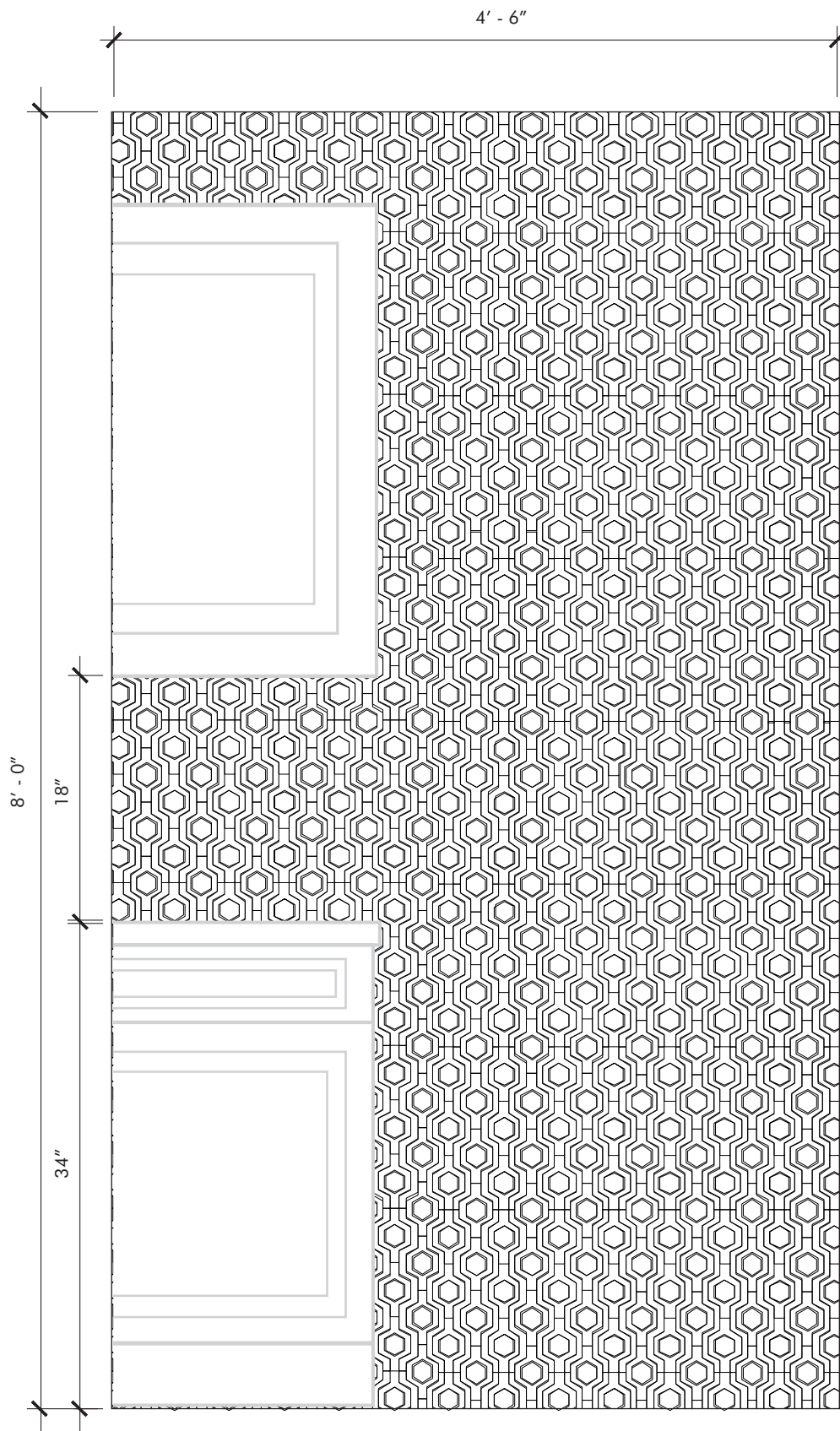
Material	Stone
Finish	Honed
Thickness	3/8"
Cut and Fill Size	13" x 13 3/16"
Square Feet/Piece	1.1901
Mounting	Mesh
Available Colors	
Ash (Ash Gray, Calacata, Flannel)	
Calacata (Calacata)	
Linen (Ash Gray, Calacata, French Linen)	

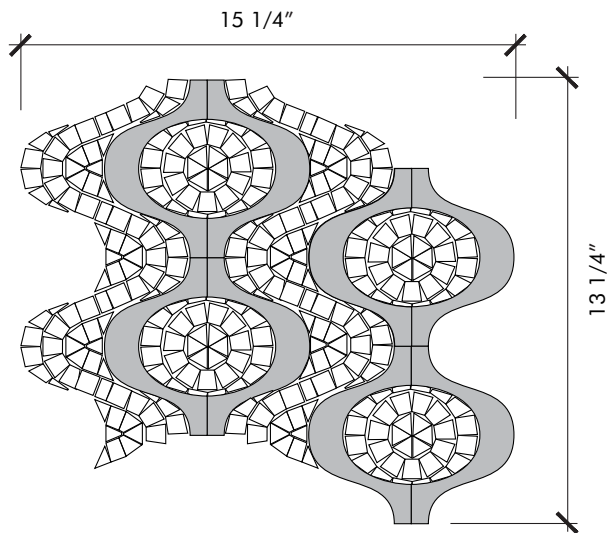
Usage		Ash	Calacata	Linen
	Commercial Interior Floor		✓	
	Commercial Interior & Exterior Wall	interior only	✓	interior only
	Residential Bathroom Floor	✓	✓	✓
	Residential Interior Floor	✓	✓	✓
	Residential Interior & Exterior Wall	interior only	✓	interior only
	Shower Floor		✓	
	Shower Wall		✓	
	Steam Showers		wall only	

Material Data		Ash	Calacata	Linen
	Color Variation	✓		✓
	Color Variation		✓	
Sealing				
	Must be sealed for use in areas that experience frequent wet conditions	✓	✓	✓
Cleaning and Maintenance				
	Protect from harsh abrasive cleaners and tools Recommended: Oceanscare or Dry Treat products			

Notes:

- We recommend sealing all natural stone products with a penetrating sealer and sealing all porous non-polished stone (limestone, tumbled marble, etc.) prior to grouting. This prevents grout from staining or affecting the color of the stone. Stone is a natural product, and care should be taken to protect it from harsh abrasive cleaners and abrasive cleaning tools.
- White thin-set or mortar is required: light limestones, tumbled stones, "antiqued stones", and light colored marbles
- Likely identified with dry seams, pits, fossils and glass veins that are often filled at the factory. The fill may perhaps leak through the voids. In this case, refilling these voids may be a necessary maintenance procedure.





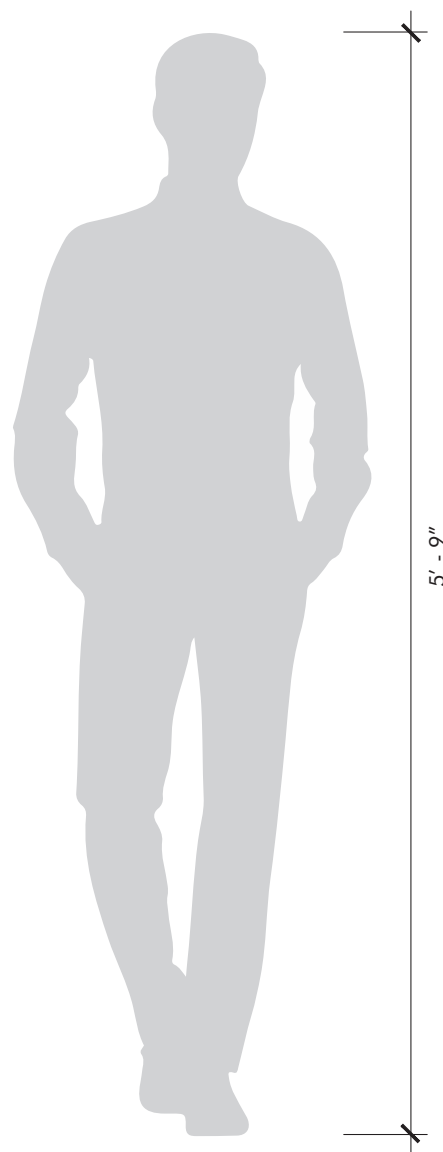
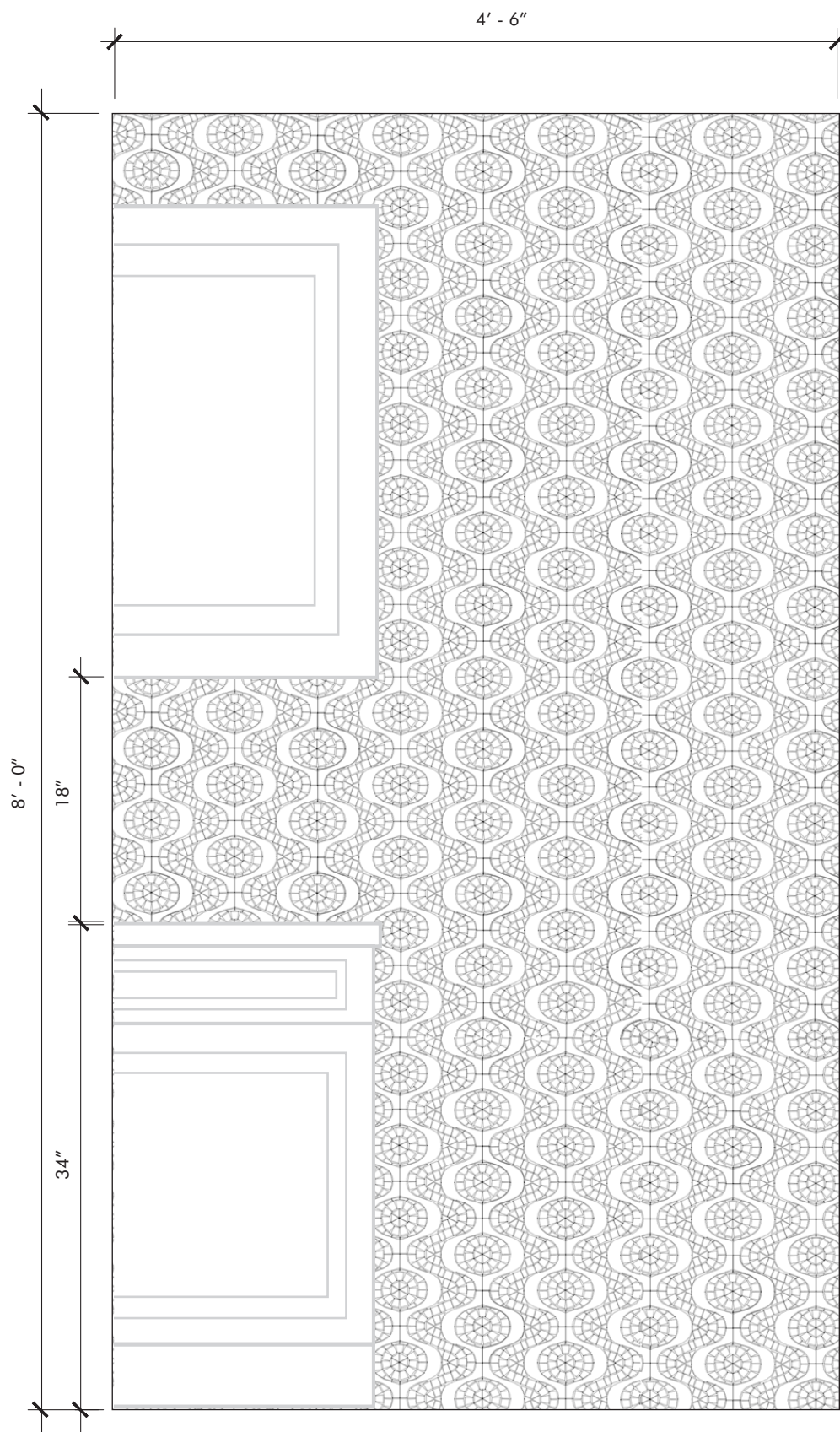
Material	Stone
Finish	Honed
Thickness	3/8"
Cut and Fill Size	10 3/8" x 9 1/8"
Square Feet/Piece	0.6623
Mounting	Mesh
Available Colors	
Calacata (Calacata)	
Crema (Crema Vecchia, Lagos Gold)	

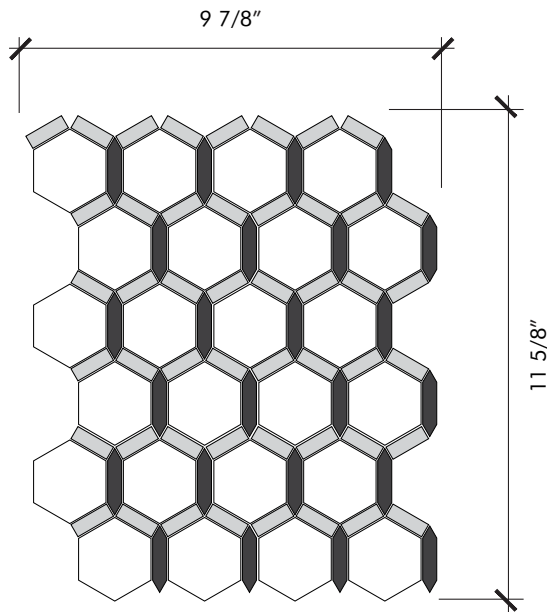
Usage		Calacata	Crema
	Commercial Interior Floor	✓	
	Commercial Interior & Exterior Wall	✓	interior only
	Residential Bathroom Floor	✓	✓
	Residential Interior Floor	✓	✓
	Residential Interior & Exterior Wall	✓	interior only
	Shower Floor	✓	
	Shower Wall	✓	✓
	Steam Showers	wall only	

Material Data		Calacata	Crema
	Color Variation		✓
	Color Variation	✓	
Sealing			
	Must be sealed for use in areas that experience frequent wet conditions	✓	✓
Cleaning and Maintenance			
	Protect from harsh abrasive cleaners and tools Recommended: Oceanscare or Dry Treat products		

Notes:

- We recommend sealing all natural stone products with a penetrating sealer and sealing all porous non-polished stone (limestone, tumbled marble, etc.) prior to grouting. This prevents grout from staining or affecting the color of the stone. Stone is a natural product, and care should be taken to protect it from harsh abrasive cleaners and abrasive cleaning tools.
- White thin-set or mortar is required: light limestones, tumbled stones, "antiqued stones", and light colored marbles
- Likely identified with dry seams, pits, fossils and glass veins that are often filled at the factory. The fill may perhaps leak through the voids. In this case, refilling these voids may be a necessary maintenance procedure.





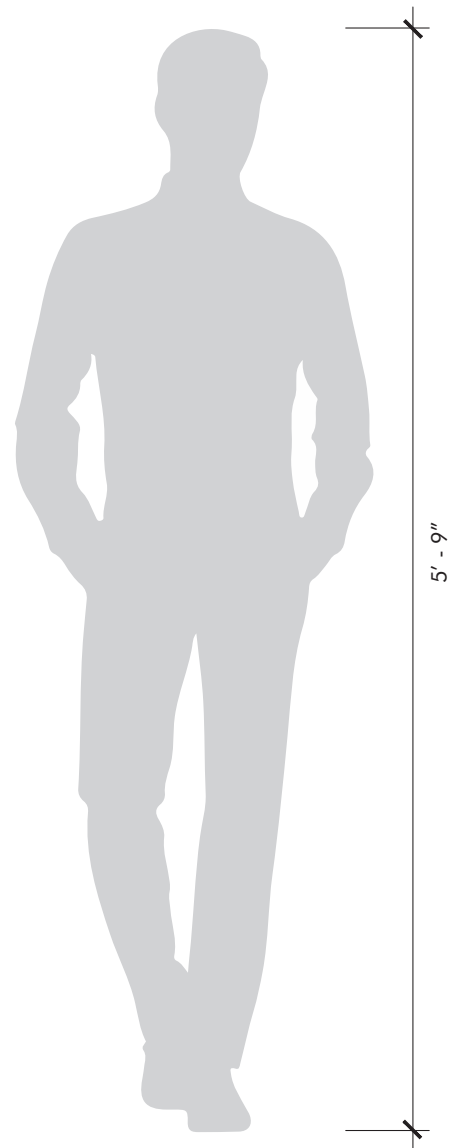
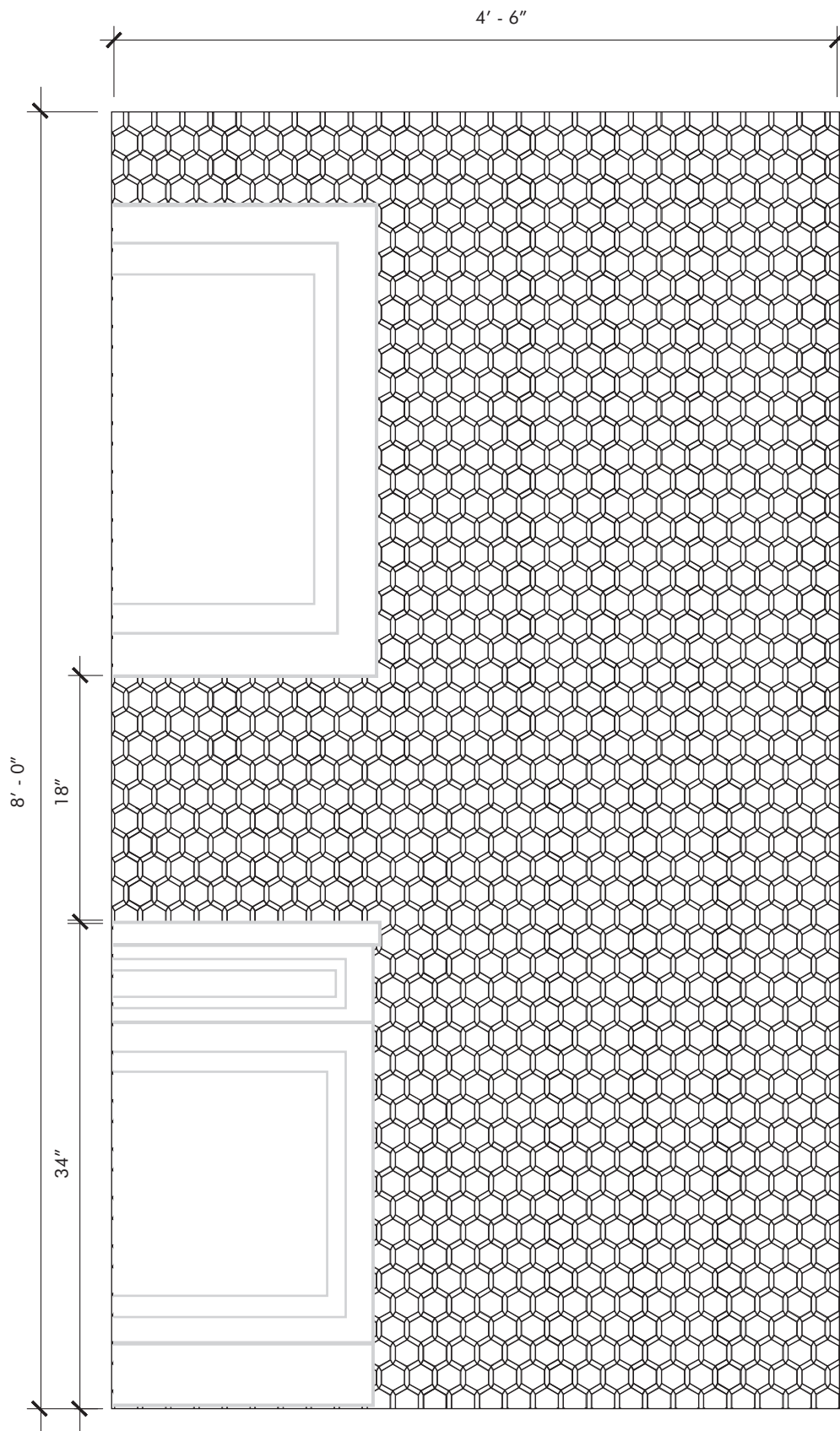
Material	Stone
Finish	Honed
Thickness	3/8"
Cut and Fill Size	8 5/8" x 11 1/4"
Square Feet/Piece	0.6711
Mounting	Mesh
Available Colors	
Ash (Ash, Calacata, Flannel)	
Calacata (Calacata)	
Crema (Cafe Bruno, Crema, Lagos Gold)	

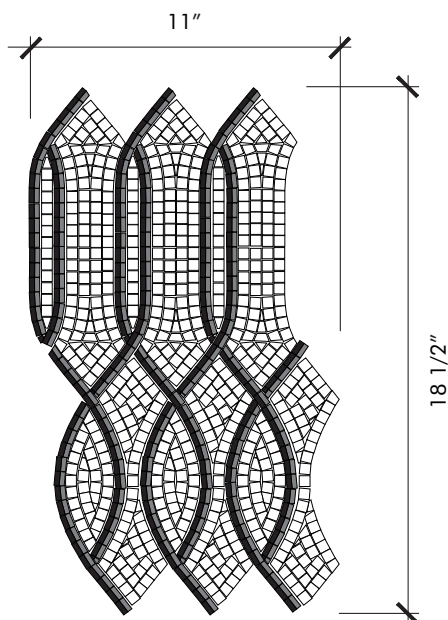
Usage		Ash	Calacata	Crema
	Commercial Interior Floor		✓	
	Commercial Interior & Exterior Wall	interior only	✓	interior only
	Residential Bathroom Floor	✓	✓	✓
	Residential Interior Floor	✓	✓	✓
	Residential Interior & Exterior Wall	interior only	✓	interior only
	Shower Floor		✓	
	Shower Wall		✓	✓
	Steam Showers		wall only	

Material Data		Ash	Calacata	Crema
	Color Variation	✓		✓
	Color Variation		✓	
Sealing				
	Must be sealed for use in areas that experience frequent wet conditions	✓	✓	✓
Cleaning and Maintenance				
	Protect from harsh abrasive cleaners and tools Recommended: Oceanscare or Dry Treat products			

Notes:

- We recommend sealing all natural stone products with a penetrating sealer and sealing all porous non-polished stone (limestone, tumbled marble, etc.) prior to grouting. This prevents grout from staining or affecting the color of the stone. Stone is a natural product, and care should be taken to protect it from harsh abrasive cleaners and abrasive cleaning tools.
- White thin-set or mortar is required: light limestones, tumbled stones, "antiqued stones", and light colored marbles
- Likely identified with dry seams, pits, fossils and glass veins that are often filled at the factory. The fill may perhaps leak through the voids. In this case, refilling these voids may be a necessary maintenance procedure.





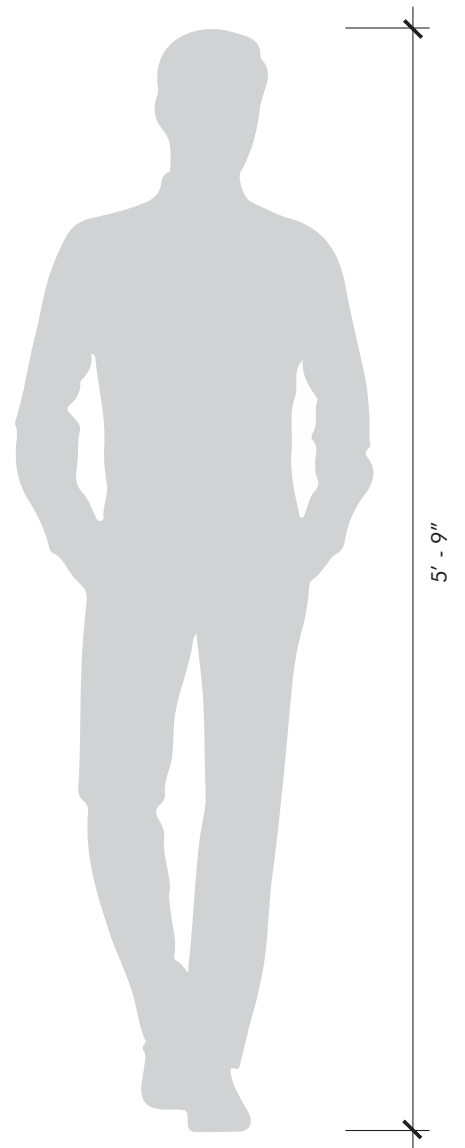
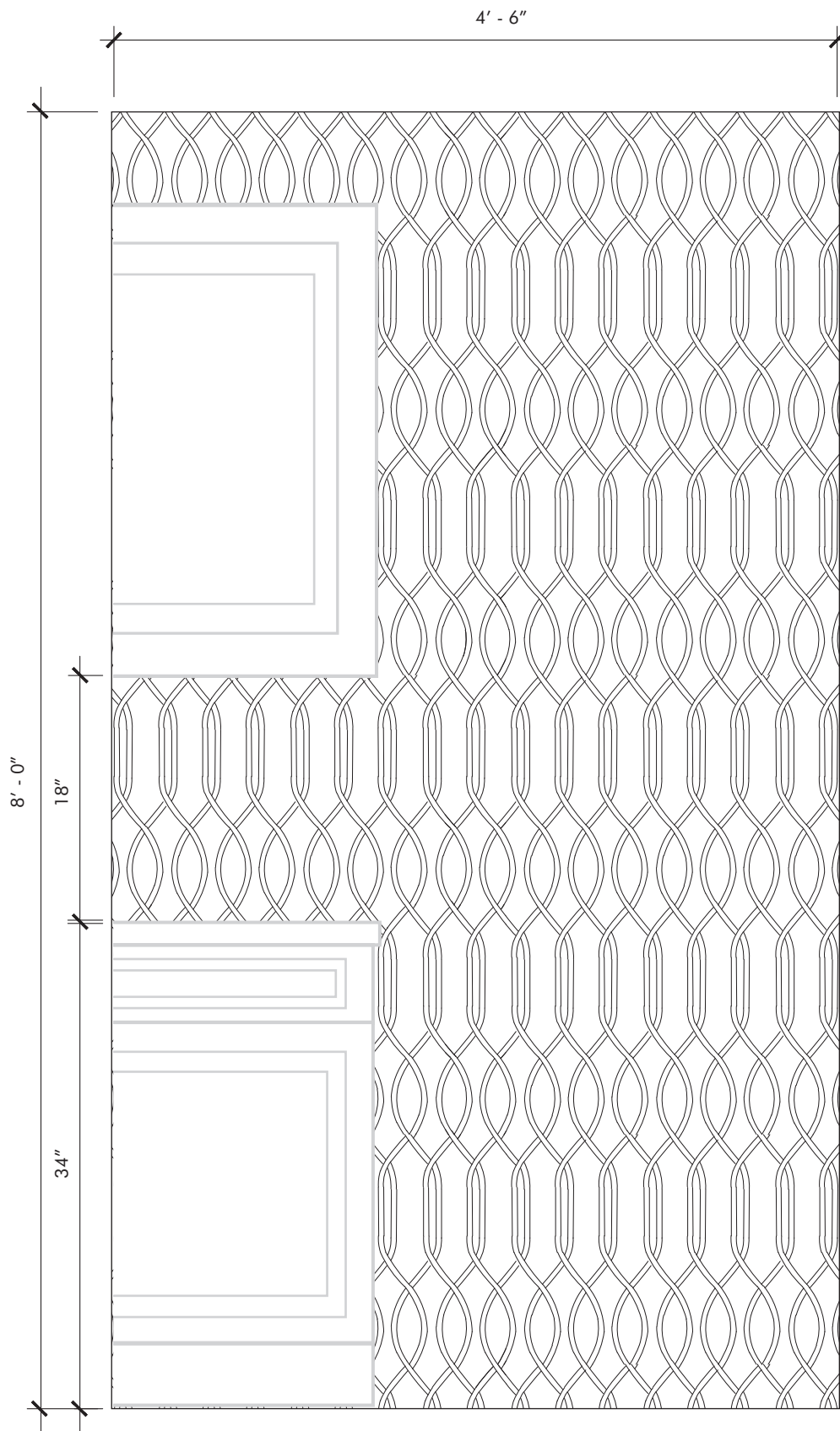
Material	Stone
Finish	Honed
Thickness	3/8"
Cut and Fill Size	16 1/2" x 9 1/4"
Square Feet/Piece	1.1000
Mounting	Mesh
Available Colors Calacata (Ash Gray, Black, Calacata) Linen (Cafe Bruno, Crema Vecchia, French Linen)	

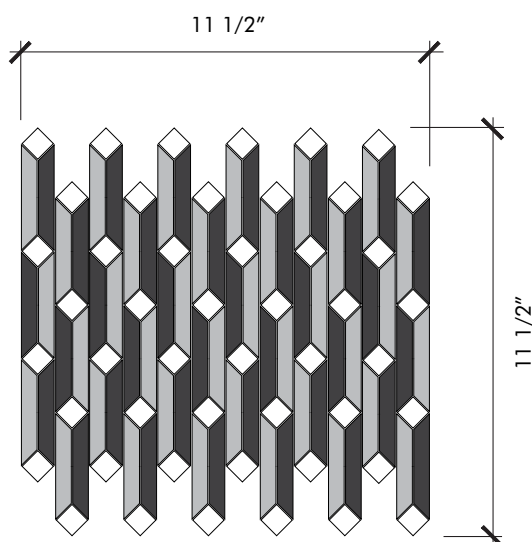
Usage		Calacata	Linen
	Commercial Interior Wall	✓	✓
	Residential Bathroom Floor	✓	✓
	Residential Interior Floor	✓	✓
	Residential Interior Wall	✓	✓
	Shower Wall		✓

Material Data		Calacata	Linen
	Color Variation		✓
	Color Variation	✓	
Sealing			
	Must be sealed for use in areas that experience frequent wet conditions	✓	✓
Cleaning and Maintenance			
	Protect from harsh abrasive cleaners and tools <i>Recommended: Oceanscare or Dry Treat products</i>		

Notes:

- We recommend sealing all natural stone products with a penetrating sealer and sealing all porous non-polished stone (limestone, tumbled marble, etc.) prior to grouting. This prevents grout from staining or affecting the color of the stone. Stone is a natural product, and care should be taken to protect it from harsh abrasive cleaners and abrasive cleaning tools.
- White thin-set or mortar is required: light limestones, tumbled stones, "antiqued stones", and light colored marbles
- Likely identified with dry seams, pits, fossils and glass veins that are often filled at the factory. The fill may perhaps leak through the voids. In this case, refilling these voids may be a necessary maintenance procedure.





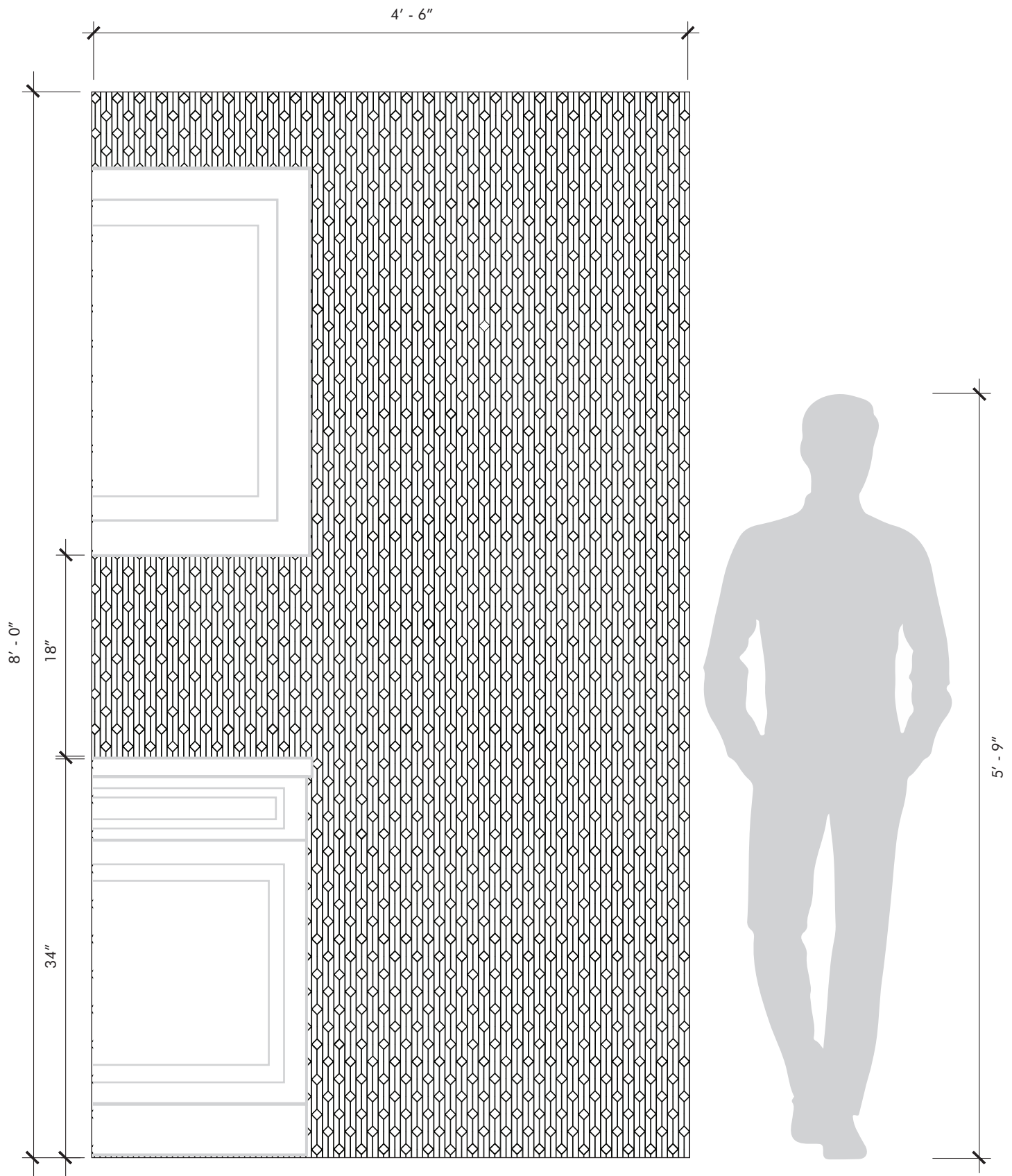
Material	Stone
Finish	Honed
Thickness	3/8"
Cut and Fill Size	11 1/4" x 9 1/8"
Square Feet/Piece	0.7092
Mounting	Mesh
Available Colors Ash (Ash, Calacata, Flannel) Calacata (Calacata)	

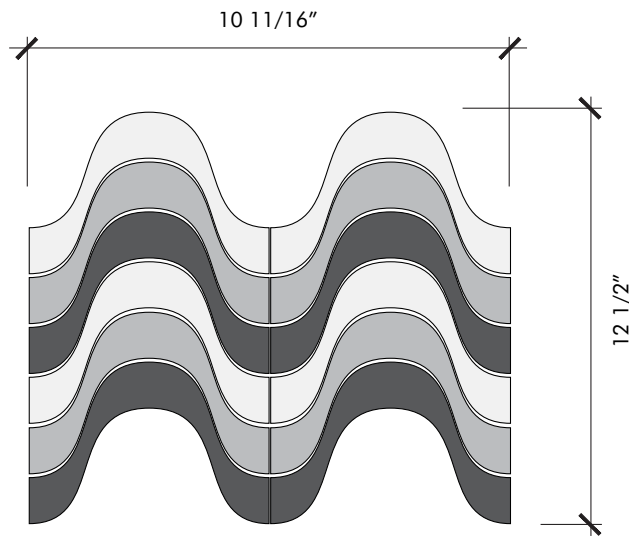
Usage		Ash	Calacata
	Commercial Interior Floor		✓
	Commercial Interior & Exterior Wall	interior only	✓
	Residential Bathroom Floor	✓	✓
	Residential Interior Floor	✓	✓
	Residential Interior & Exterior Wall	interior only	✓
	Shower Floor		✓
	Shower Wall		✓
	Steam Showers		wall only

Material Data		Ash	Calacata
	Color Variation	✓	
	Color Variation		✓
Sealing			
	Must be sealed for use in areas that experience frequent wet conditions	✓	✓
Cleaning and Maintenance			
	Protect from harsh abrasive cleaners and tools Recommended: Oceancare or Dry Treat products		

Notes:

- We recommend sealing all natural stone products with a penetrating sealer and sealing all porous non-polished stone (limestone, tumbled marble, etc.) prior to grouting. This prevents grout from staining or affecting the color of the stone. Stone is a natural product, and care should be taken to protect it from harsh abrasive cleaners and abrasive cleaning tools.
- White thin-set or mortar is required: light limestones, tumbled stones, "antiqued stones", and light colored marbles
- Likely identified with dry seams, pits, fossils and glass veins that are often filled at the factory. The fill may perhaps leak through the voids. In this case, refilling these voids may be a necessary maintenance procedure.





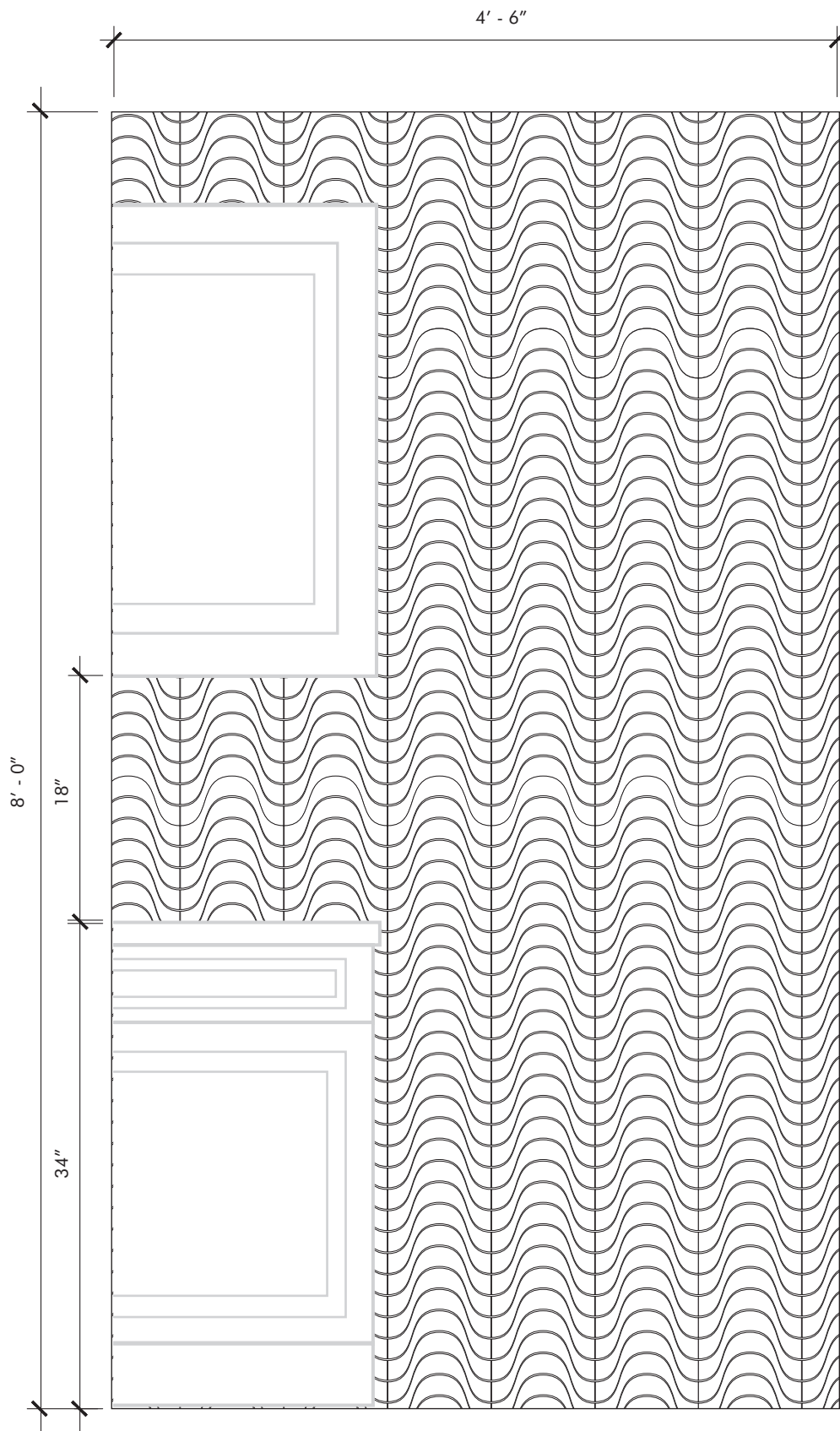
Material	Stone
Finish	Honed
Thickness	3/8"
Cut and Fill Size	7 5/8" x 12 1/2"
Square Feet/Piece	0.6623
Mounting	Mesh
Available Colors	
Ash (Ash Gray, Calacata)	
Cafe (Cafe Bruno, Crema Vecchia, French Linen)	
Calacata (Calacata)	

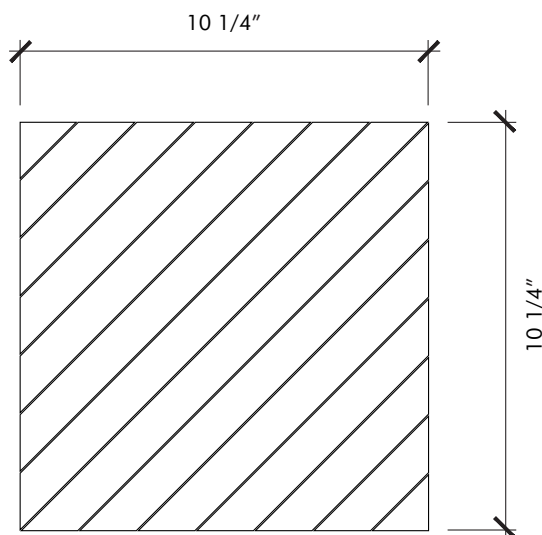
Usage		Ash	Calacata	Cafe
	Commercial Interior Floor		✓	
	Commercial Interior & Exterior Wall	interior only	✓	✓
	Residential Bathroom Floor	✓	✓	✓
	Residential Interior Floor	✓	✓	✓
	Residential Interior & Exterior Wall	interior only	✓	✓
	Shower Floor		✓	
	Shower Wall		✓	✓
	Steam Showers		wall only	wall only

Material Data		Ash	Calacata	Cafe
	Color Variation	✓		✓
	Color Variation		✓	
Sealing				
	Must be sealed for use in areas that experience frequent wet conditions	✓	✓	✓
Cleaning and Maintenance				
	Protect from harsh abrasive cleaners and tools Recommended: Oceancare or Dry Treat products			

Notes:

- We recommend sealing all natural stone products with a penetrating sealer and sealing all porous non-polished stone (limestone, tumbled marble, etc.) prior to grouting. This prevents grout from staining or affecting the color of the stone. Stone is a natural product, and care should be taken to protect it from harsh abrasive cleaners and abrasive cleaning tools.
- White thin-set or mortar is required: light limestones, tumbled stones, "antiqued stones", and light colored marbles
- Likely identified with dry seams, pits, fossils and glass veins that are often filled at the factory. The fill may perhaps leak through the voids. In this case, refilling these voids may be a necessary maintenance procedure.





Material	Stone
Finish	Honed
Thickness	3/8"
Cut and Fill Size	10" x 10"
Square Feet/Piece	0.7050
Mounting	Mesh
Available Colors Calacata	

Usage	
	Commercial Interior Floor
	Commercial Wall Interior & Exterior
	Residential Bathroom Floor
	Residential Interior Floor
	Residential Wall Interior & Exterior
	Shower Floor
	Shower Wall
	Steam Shower Wall

Material Data



Color Variation

Sealing



Must be sealed for use in areas that experience frequent wet conditions

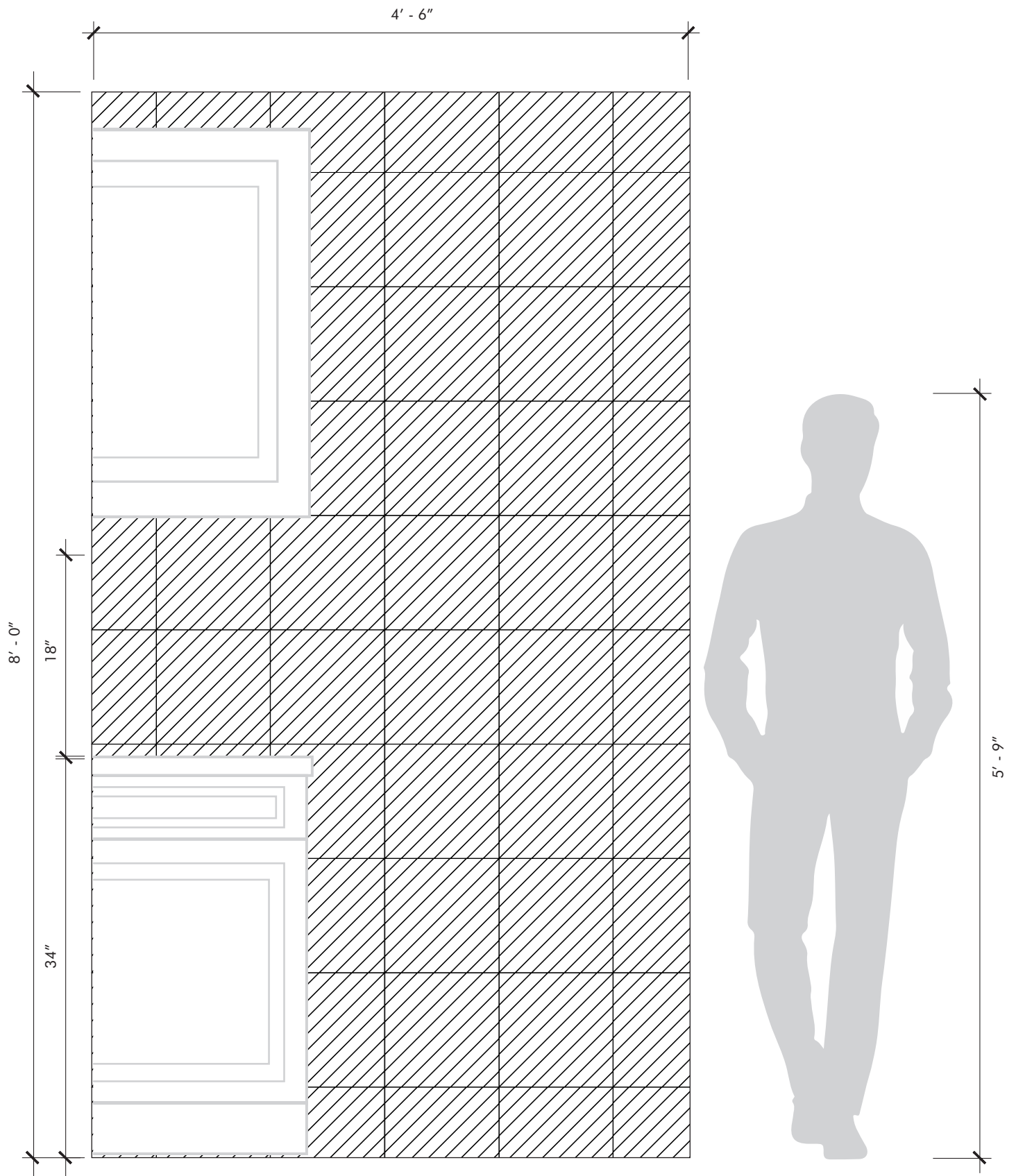
Cleaning and Maintenance

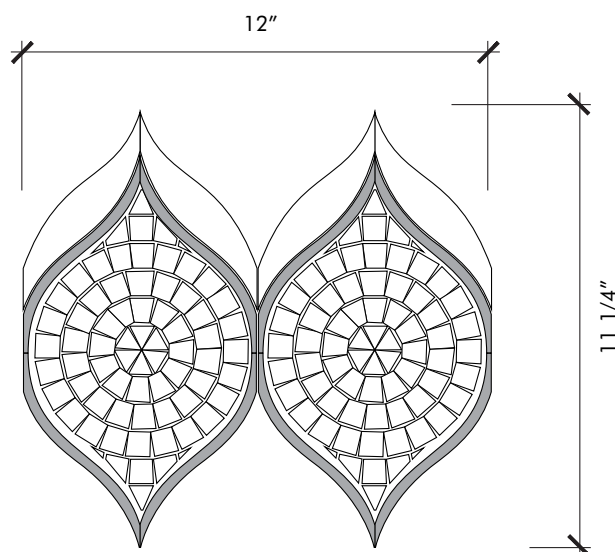


Protect from harsh abrasive cleaners and tools
Recommended: Oceancare or Dry Treat products

Notes:

- We recommend sealing all natural stone products with a penetrating sealer and sealing all porous non-polished stone (limestone, tumbled marble, etc.) prior to grouting. This prevents grout from staining or affecting the color of the stone. Stone is a natural product, and care should be taken to protect it from harsh abrasive cleaners and abrasive cleaning tools.
- White thin-set or mortar is required: light limestones, tumbled stones, "antiqued stones", and light colored marbles
- Likely identified with dry seams, pits, fossils and glass veins that are often filled at the factory. *The fill may perhaps leak through the voids. In this case, refilling these voids may be a necessary maintenance procedure.*





Material	Stone
Finish	Honed
Thickness	3/8"
Cut and Fill Size	7 5/8" x 11 7/8"
Square Feet/Piece	0.6289
Mounting	Mesh
Available Colors	
Calacata (Ash Gray, Calacata)	
Crema (Crema Vecchia, Lagos Gold)	

Usage		Calacata	Crema
	Commercial Interior Floor	✓	
	Commercial Wall Interior & Exterior	✓	interior only
	Residential Bathroom Floor	✓	✓
	Residential Interior Floor	✓	✓
	Residential Wall Interior & Exterior	✓	interior only
	Shower Floor	✓	
	Shower Wall	✓	✓
	Steam Showers	wall only	

Material Data		Calacata	Crema
MEDIUM 	Color Variation		✓
HIGH 	Color Variation	✓	
Sealing			
	Must be sealed for use in areas that experience frequent wet conditions	✓	✓
Cleaning and Maintenance			
	Protect from harsh abrasive cleaners and tools Recommended: Oceancare or Dry Treat products		

Notes:

- We recommend sealing all natural stone products with a penetrating sealer and sealing all porous non-polished stone (limestone, tumbled marble, etc.) prior to grouting. This prevents grout from staining or affecting the color of the stone. Stone is a natural product, and care should be taken to protect it from harsh abrasive cleaners and abrasive cleaning tools.
- White thin-set or mortar is required: light limestones, tumbled stones, "antiqued stones", and light colored marbles
- Likely identified with dry seams, pits, fossils and glass veins that are often filled at the factory. The fill may perhaps leak through the voids. In this case, refilling these voids may be a necessary maintenance procedure.

