

Step 4.

Assemble to Door

- Hold external lever-rosette (5) on the external side of door. Insert square drive spindle (4) through latch cam from the inside, locating round end of spindle (see inset) into the spring (9).
- Note:** For doors 32mm-40mm thick, use short spindle. For doors 40mm-45mm, use longer spindle.
- Hold internal lever-rosette (2) with privacy adaptor (3) and privacy SS cover (12) and position on door, locating square drive spindle into square recess on the inside of privacy adaptor whilst also locating the end of the emergency release bar (8) into the hole on the external lever-rosette (10).
- Fasten internal and external assemblies together with screws (6) & tube nuts (11) provided, using horizontal mounting holes. Then tighten the screw head on each side.

2800

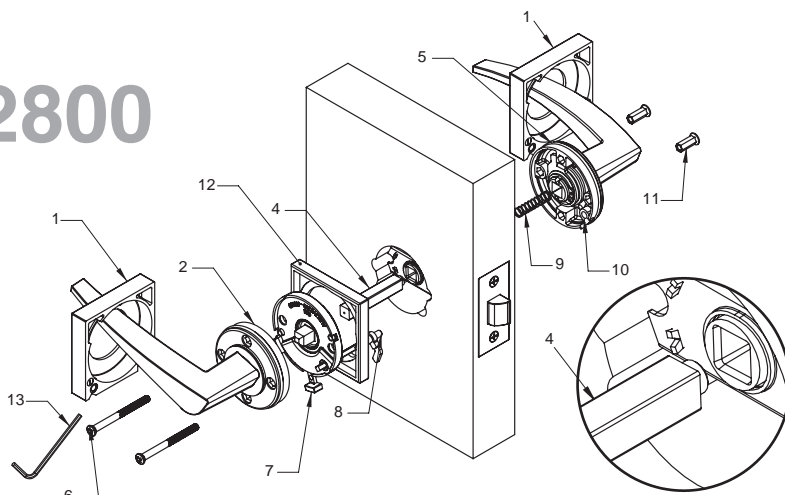
- Reapply square rosette covers (1) to internal (2) & external lever-rosettes (5) by pushing the covers over the rubber rings until flush with door. The grub screw, which is already located in the square rosette cover, should be on the lower face.
- Check the square rosette covers are square with the door edge. Fasten in place with *grub screw using the allen key (13) provided.

*Note: Grub screw is already located in the rosette cover.

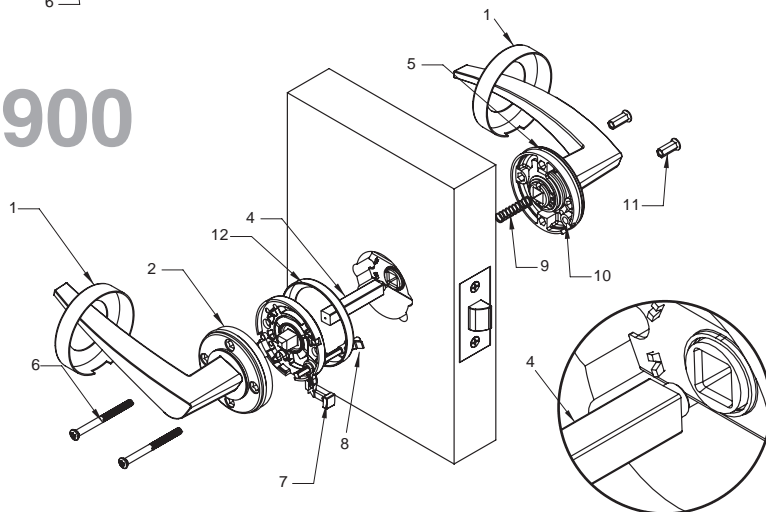
2900

- Reapply rosette covers (1) to internal (2) & external lever-rosettes (5) by pushing the covers over the rubber rings until flush with door. (Ensure tabs at bottom of lever-rosettes (2 & 5) match cut-out in rosette covers).

2800



2900



Step 5. Confirm Operation

Normal Operation

- Engage snib on inside. Latch cannot be operated by external lever. Snib automatically disengaged by operation of internal lever.

Emergency release

- Engage snib on inside. Snib can be disengaged by rotation of emergency release bar in the outer rosette using a pen tip or similar projected object.



Mark centre-line
of latch hole

TOP
OF
DOOR

FOLD HERE

Fit here on door edge

Important Note
Drill 9mm holes before
44mm hole for ease of drilling

9mm hole (drill first)

BACKSET 60mm

BACKSET 70mm

Fit here on door edge

44mm hole



ALLEGION

1800 098 094

info.au@allegion.com
gainsboroughhardware.com.au

