

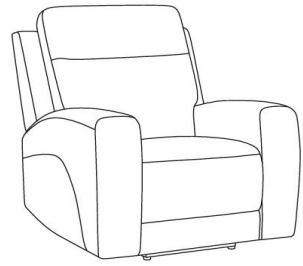
FLEXSTEEL®

Power Recliner with Power Headrest, Lumbar, Heat & Massage

IMPORTANT NOTE

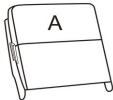
Read these instructions carefully, and familiarize yourself with each procedure before assembling the furniture. Check that you have all the component parts, and familiarize yourself with each part before proceeding.

Take all the fittings out of the plastic bag and separate them into groups. Ensure you have enough space to lay out all the parts before assembly. To prevent damage to the parts, we recommend that you assemble the unit on a soft, level surface.

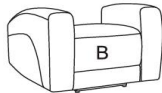


Part List

A. Back
1 piece



B. Seat
1 piece



C. Wing
2 pieces



D. Transformer
1 piece



Assembly Instructions

STEP 1

Take out the Wings (C) and Transformer (D) from the bottom of the Seat (B). (See Figure 1)

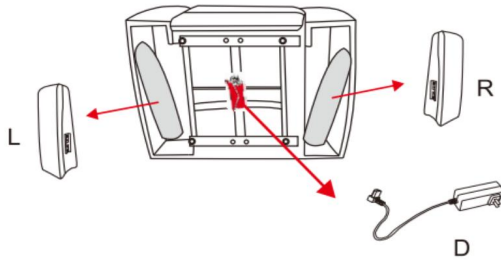


Figure 1

STEP 2

Attach the Back (A) to the Seat (B) and attach the Left and Right Wings (C) to the Back (A). Ensure the latches fit well. (See Figure 2)

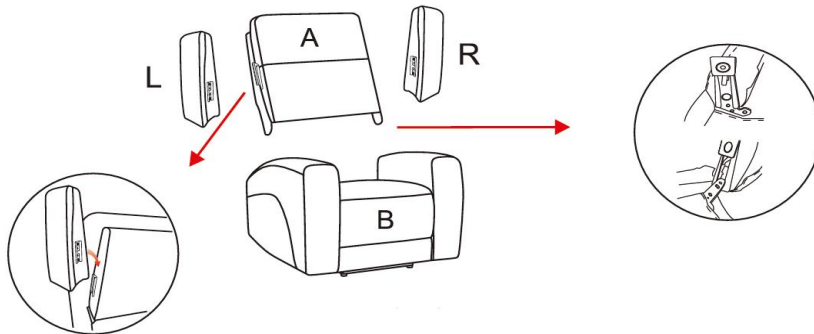


Figure 2

STEP 3

Zip the fabric on bottom of the Back (A) with back of the Seat (B). (See Figure 3)

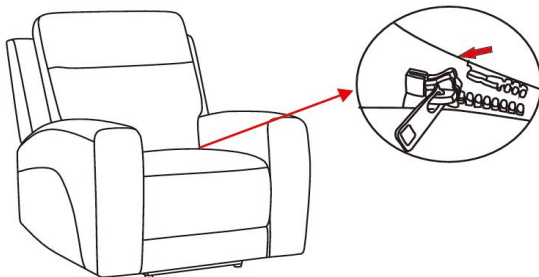


Figure 3

STEP 4

Flip up the back flap, and remove the cables from the Back (A).

Connect the cables with red labels together, and then connect the cables with labels A to A, B to B, C to C. (See Figure 4)

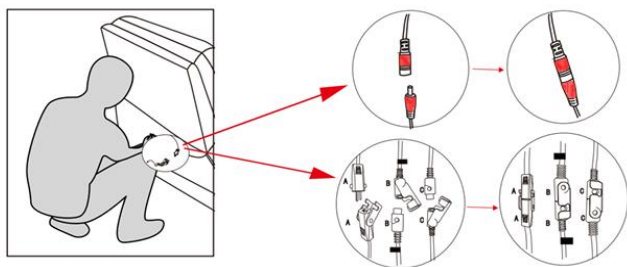


Figure 4

STEP 5

Connect the Transformer (D) into the power port on the back of the Seat (B), then plug it into a nearby outlet, still making sure it is clear of the metal base. (See Figure 5).

Fasten the back flap to the bottom of the furniture. (See Figure 6)

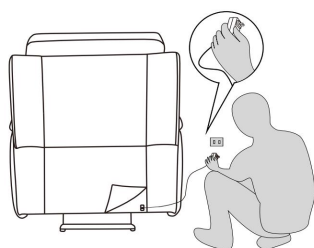


Figure 5

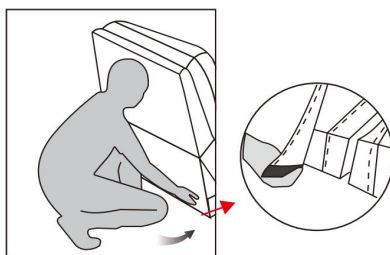


Figure 6

Disassembly Instructions

Pull up the spring leaf in bracket, then lift Back (A) up.

Unzip the zipper between Back (A) and Seat (B), then disconnect all of cables behind the back. (See Figure 7)

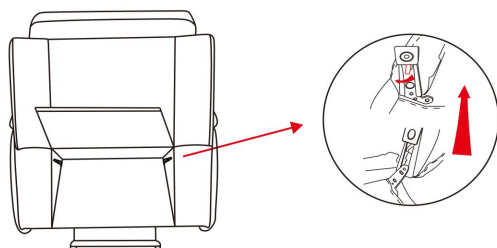


Figure 7

IMPORTANT NOTE

- To avoid any risk of suffocation to children or pets, dispose of all plastic bags immediately.
- To ensure proper performance, occasionally check for loose screws and tighten as needed.
- If the reclining functions are not working properly, check for loose cable connections before contacting the retailer.