

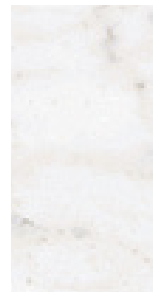
Renaissance



Colors



White
VTL REWH
1224



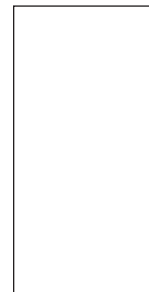
Reign
VTL RERN
1224



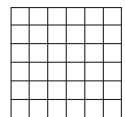
Gold
VTL REGD
1224



Sizes



12" x 24" x 8mm



2" x 2" x 8mm Mosaic

RENAISSANCE

Field Tiles*

SIZE	ACTUAL	THICKNESS	FINISH
12" x 24"	12.00" x 24.00"	8.00mm	Matte/Natural
* Not all sizes/trims are available in all colors and finishes, scan QR code for product details.			

Mosaics & Coordinating Trims*

SIZE	ACTUAL	FINISH
3" x 12" Bullnose	3.00" x 12.00"	Matte/Natural
2" x 2" Mosaic	12.00" x 12.00"	Matte/Natural
Recommended Grout Joint: 1/8" - Rectified 3/16" - Non Rectified		

Product Characteristics

	MATTE/NATURAL
Breaking Strength (ASTM C648 or ISO 10545-4)	≥300 lb/ft2
Chemical Resistance (ASTM C650 or ISO 10545-13)	Resistant
DCOF	≥0.42
Deep Scratch Resistance - Unglazed (ISO 10545-6)	N/A
Frost Resistance (ASTM C1026 or ISO 10545-12)	Resistant
Mohs Hardness - EN101	N/A
Water Absorption (ASTM C373 or ISO 10545-3)	≤0.4%
Certifications	Greenguard Bureau Veritas NSF EPD
Country of Origin	USA
Shade Variation Code	V3

Application**

		WALL	FLOOR
Interior	Residential	•	•
Interior	Commercial	•	•
Interior	Heavy Commercial	•	
Exterior	Residential/Commercial	•	

** These recommendations are not defined by ANSI Standards

Material

Glazed Color-Body Porcelain



Made in USA



Ready Ship



V3 Moderate Variation



DCOF: DCOF



Certifications



Scan QR Code for
Product Information and
Installation Images

Request samples.

www.vitlsurfaces.com
samples@vitlsurfaces.com



VITL
SURFACES
COMMERCIAL