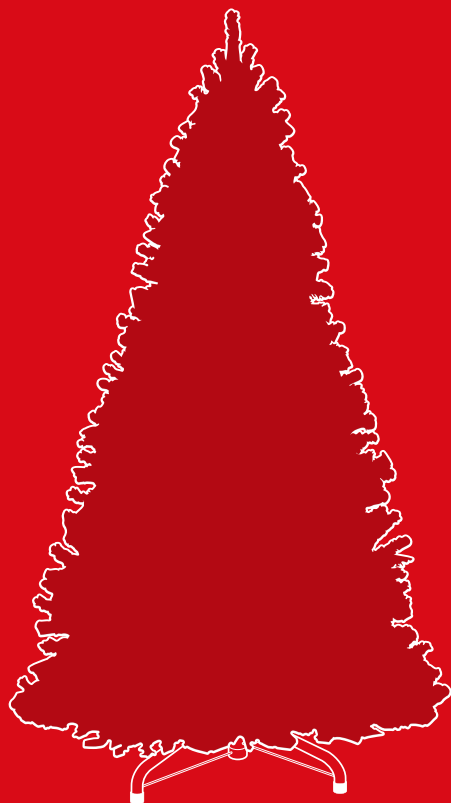




bestchoiceproducts



INSTRUCTION MANUAL

Pre-Lit Artificial Hinged Christmas Tree

SKY2818 + SKY2888 + SKY3706 + SKY4213 + SKY4983 + SKY4985
SKY4988 + SKY4991 + SKY5088 + SKY5090 + SKY5094 + SKY5095
SKY5096 + SKY5456 + SKY5459 + SKY5460



bestchoiceproducts

As shoppers, we're always trying to find the perfect balance between quality & value. At BCP, we believe we've achieved that. Our diverse catalog of everyday essentials is tailored especially to our customers & guaranteed to hit that sweet spot of high quality & low price.

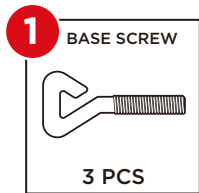
— Always. —



Please remove the circular protector caps on the end of each of the poles before assembling.

bestchoiceproducts.com

HARDWARE

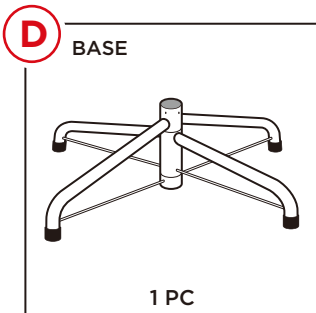
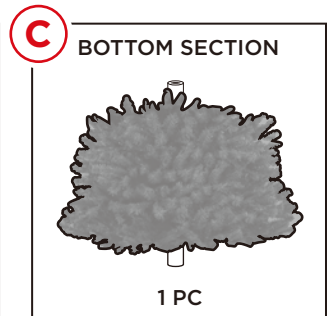
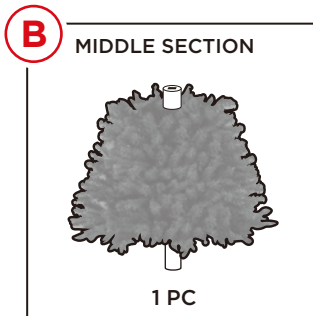
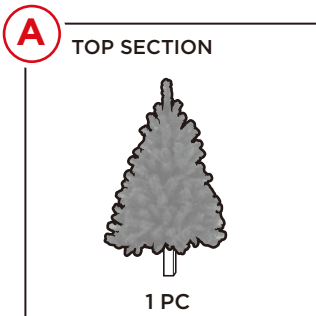


1 PERSON
ASSEMBLY



APPROXIMATELY
15 MIN.
ASSEMBLY

PARTS



NOTE: Wires/plugs may come wrapped around frame pieces. Locate and unwrap wires/plugs beforehand to make assembly easier.

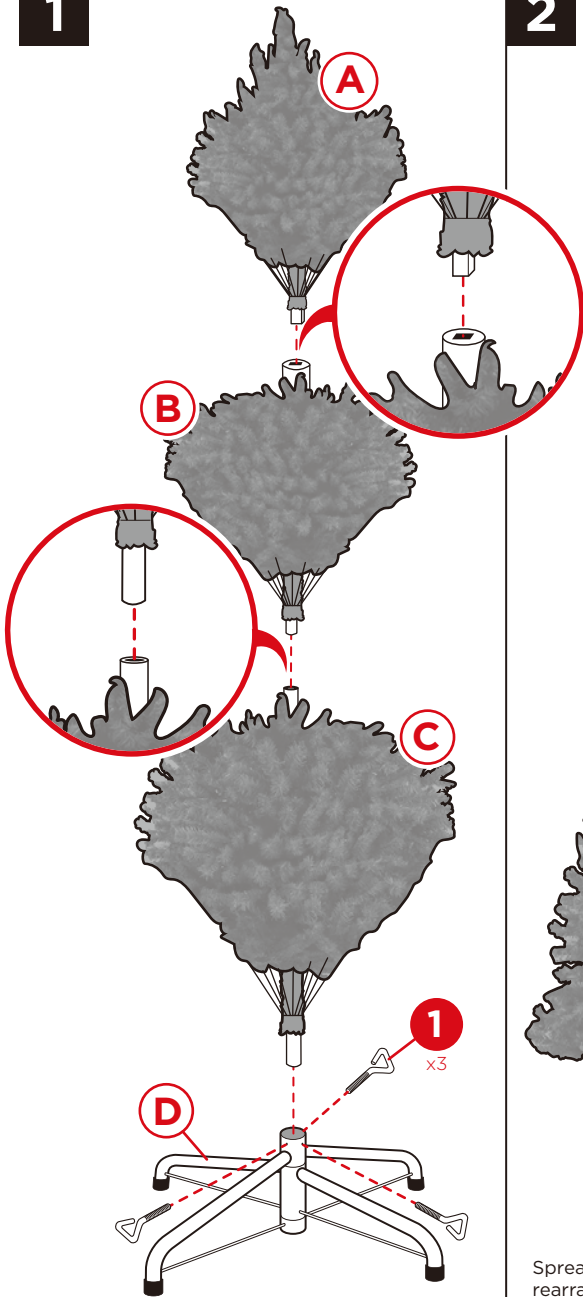
PRODUCT ASSEMBLY

Please retain these instructions for future reference.

1

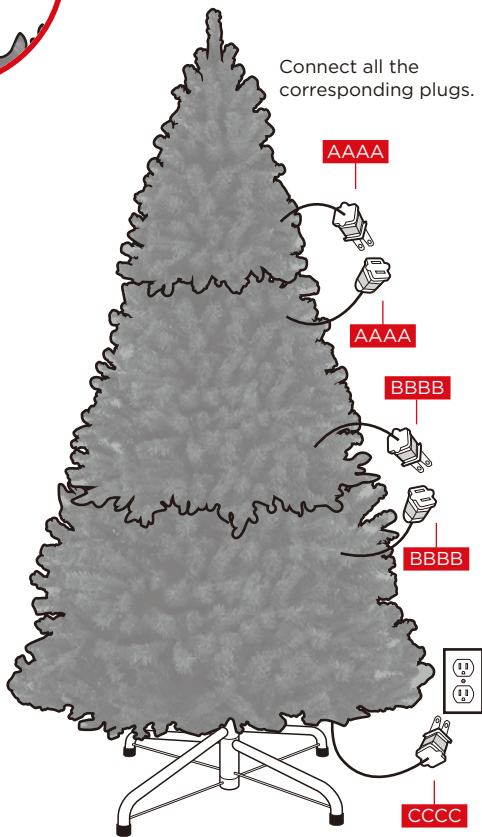
Assemble the Christmas tree.

2



Spare bulbs may be included and are attached by the plugs.

Connect all the corresponding plugs.



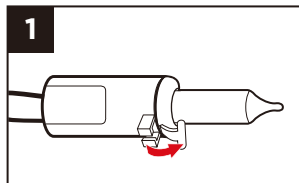
Spread out the branches of the tree and rearrange them to your preference.

Insert the bottom plug into a wall outlet to turn the lights on.

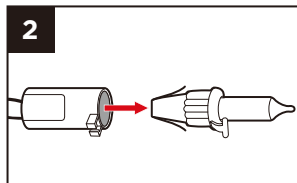
CLEANING & STORAGE

- Store this tree in a cool and dry place away from heat and moisture.
- Before putting this tree in storage, do the following:
 - Completely remove all decorations.
 - Clean the tree with a slightly damp cloth and let it dry naturally.
 - Raise all branches to original upright position; make sure not to damage any branches in the process.

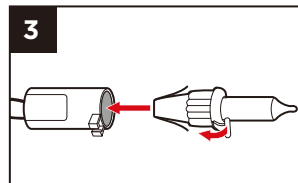
CHANGING BROKEN LIGHTS



Release the latch located on the side of the bulb



Carefully pull the bulb out of the socket



Insert a new bulb and lock the latch



bestchoiceproducts

Check out more great products:

bestchoiceproducts.com

Earn points while you shop. Join today!

bestchoiceproducts **rewards**

Join | Earn | Redeem

Give your friends 15% off their first order! For each successful referral you'll receive 100 points.

bestchoiceproducts.com



HELP CENTER



Question about your product? We're here to help. Visit us at:

help.bestchoiceproducts.com



Chat Support



Product Inquiry



Orders FAQ



Product Assembly



Returns & Refunds

PRODUCT WARRANTY INFORMATION

All items can be returned for any reason within 60 days of the receipt and will receive a full refund as long as the item is returned in its original product packaging and all accessories from its original shipment are included. All returned items will receive a full refund back to the original payment method. All returned items will not be charged a re-stocking fee.

All returned items require an RA (Return Authorization) number, which can only be provided by a Best Choice Products Customer Service Representative when the return request is submitted. Items received without an RA may not be accepted or may increase your return processing time. Once an item has been received by Best Choice Products, refunds or replacements will be processed within 5 business days.

All returns must be shipped back to the Best Choice Products Return Center at the customer's expense. If the reason for return is a result of an error by Best Choice Products then Best Choice Products will provide a pre-paid shipping label via email. Boxes for return shipping will not be provided by Best Choice Products, and is the customer's responsibility to either use the original shipping boxes or purchase new boxes.

Pictures may be required for some returns to ensure an item is not damaged prior to its return. Items returned are not considered undamaged until they are received by Best Choice Products and verified as such. All damages to items are the customer's responsibility until the item has been received by and acknowledge by Best Choice Products as undamaged.



WARNING

Manufacturer and seller expressly disclaim any and all liability for personal injury, property damage or loss, whether direct, indirect, or incidental, resulting from the incorrect attachment, improper use, inadequate maintenance, or neglect of this product.