

# BARCO®

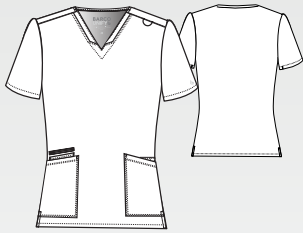
Spring | Summer 2023

## MATRIX



**BARCO®**  
*Made to Matter*

**BUT167 Purpose Top**  
4-pocket, V-neckline, shoulder contrast badge loop, zip pocket PDA, tool strip detail at front pockets  
*Sizes: XXS-5XL, CB: 25.5"*  
*Color shown: 23 Indigo*



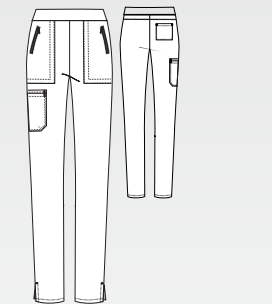
**BUT163 Mission Top**  
1-pocket, Henley style neckline, dyed-to-match button placket, welt chest pocket, straight hem, tuck in style top  
*Sizes: XXS-5XL, CB: 26.5"*  
*Color shown: 905 Steel*



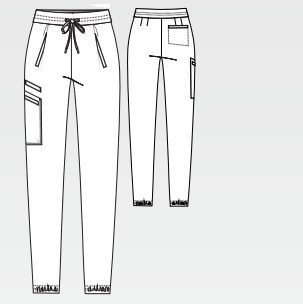
**BUT156 Gratitude Top**  
4-pocket Sweetheart neckline, princess seams, dyed-to-match front zip pocket, PDA, curved back hem top  
*Sizes: XXS-5XL, CB: 26"*  
*Color shown: 1803 Dusty Red*



**BUP601 Purpose Pant**  
5-pocket, high-rise slim pant, flat front waistband with interior drawcord, dyed-to-match zip front pockets, double cargo PDA pocket, back pocket pant  
*Sizes: XXS-5XL, I: 30.5"*  
*XXSP-XLP, I: 28.5"*  
*ST-XLT, I: 32.5"*  
*Color shown: 23 Indigo*



**BUP606 Mission Jogger**  
6-pocket, high rise jogger, elastic waistband with drawcord, front welt pockets, PDA welt, double single cargo pockets, elastic hem jogger  
*Sizes: XS-5XL, I: 29"*  
*XSP-XLP, I: 27"*  
*ST-XLT, I: 31"*  
*Color shown: 1803 Dusty Red*



01 Black	G
08 New Royal	G
10 White	•NEW SU G
23 Indigo	G
40 Ciel	•NEW SU G
65 Wine	•NEW SP G
328 Bahama	•NEW SP G
905 Steel	G
1803 Dusty Red	G
2238 Fresco Blue	•NEW SU G

01 Black	G
08 New Royal	G
10 White	•NEW SU G
23 Indigo	G
40 Ciel	•NEW SU G
65 Wine	•NEW SP G
328 Bahama	•NEW SP G
905 Steel	G
1803 Dusty Red	G
2238 Fresco Blue	•NEW SU G

01 Black	G
08 New Royal	G
10 White	•NEW SU G
23 Indigo	G
40 Ciel	•NEW SU G
65 Wine	•NEW SP G
328 Bahama	•NEW SP G
905 Steel	G
1803 Dusty Red	G
2238 Fresco Blue	•NEW SU G

01 Black	G
08 New Royal	G
10 White	•NEW SU G
23 Indigo	G
40 Ciel	•NEW SU G
65 Wine	•NEW SP G
328 Bahama	•NEW SP G
905 Steel	G
1803 Dusty Red	G
2238 Fresco Blue	•NEW SU G

01 Black	G
08 New Royal	G
10 White	•NEW SU G
23 Indigo	G
40 Ciel	•NEW SU G
65 Wine	•NEW SP G
328 Bahama	•NEW SP G
905 Steel	G
1803 Dusty Red	G
2238 Fresco Blue	•NEW SU G

**All Styles Main Fabric**  
71% Polyester/24% Rayon/5% Spandex twill

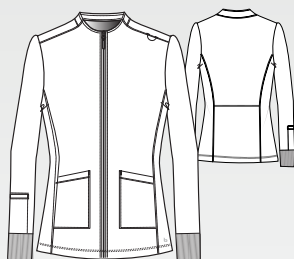
**G all colors and styles supported for Groups**





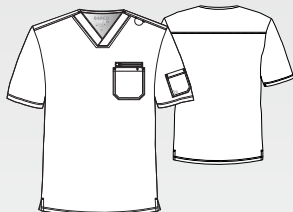
### BUW884 Team Warm-Up

3-pocket low funnel neckline, princess seams, dyed-to-match zip placket, shoulder contrast badge loop, front pockets, welt sleeve PDA, back waist detail, rib cuff sleeves jacket  
**Sizes: XS-5XL, CB: 26"**  
*Color shown: 905 Steel*



### BUT153 Rally Top

3-pocket, banded V-neck, shoulder contrast badge loop, dyed-to-match zip chest pocket and patch pocket with pen slots, sleeve pocket, straight hem top  
**Sizes: XS-5XL, CB: 29"**  
*Color shown: 905 Steel*



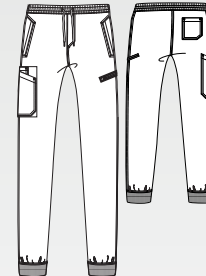
### BUW881 Rally Warm-Up

4-pocket, rib trimmed mock neck, dyed-to-match zip placket, hidden zip chest pockets, kanga-style front pockets, cuff sleeve jacket  
**Sizes: XS-5XL, CB: 29"**  
*Color shown: 905 Steel*



### BUP602 Rally Jogger

6-pocket elastic waistband with drawcord, front zip fly, L shaped welt pocket, double single cargo pocket with dyed-to-match zip pocket, back pocket, rib cuff jogger  
**Sizes: XS-5XL, I: 29"**  
**SS-XLS, I: 27"**  
**ST-XLT, I: 31"**  
*Color shown: 23 Indigo*



01 Black	G
08 New Royal	G
10 White	•NEW SU G
23 Indigo	G
40 Ciel	•NEW SU G
65 Wine	•NEW SP G
328 Bahama	•NEW SP G
905 Steel	G
1803 Dusty Red	G
2238 Fresco Blue	•NEW SU G

01 Black	G
08 New Royal	G
10 White	•NEW SU G
23 Indigo	G
40 Ciel	•NEW SU G
65 Wine	•NEW SP G
328 Bahama	•NEW SP G
905 Steel	G
Diagonal stripes	

01 Black	G
08 New Royal	G
10 White	•NEW SU G
23 Indigo	G
40 Ciel	•NEW SU G
65 Wine	•NEW SP G
328 Bahama	•NEW SP G
905 Steel	G
Diagonal stripes	

01 Black	G
08 New Royal	G
10 White	•NEW SU G
23 Indigo	G
40 Ciel	•NEW SU G
65 Wine	•NEW SP G
328 Bahama	•NEW SP G
905 Steel	G
Diagonal stripes	

**G** all colors and styles supported for Groups

**All Styles Main Fabric**  
 71% Polyester / 24% Rayon / 5% Spandex twill



+ SPANDEXSTRETCH

**GRST136 Capri Tuck-In Top**  
2-pocket, hourglass V-neck, front and back princess seams, chest and sleeve welt pockets, rib knit center back panel, high-low hem tuck-in top  
Sizes: XXS - 3XL, CB: 25.5"  
Color shown: 23 Indigo

Knit Accent Content:  
94% Polyester / 6% Spandex



ANTIMICROBIAL

01 Black	
08 New Royal	
10 White	•NEW SU
23 Indigo	
40 Ciel	•NEW SU
65 Wine	•NEW SP
328 Bahama	•NEW SP
905 Steel	
512 Brilliance	•NEW SP

**GVST028 Bree Tuck-In Top**  
1-pocket, knit V-neck with light grey badge loop and shaped high-low hem  
Sizes: XS - 3XL, CB: 25.5"  
Color shown: 39 Teal

Knit Accent Content:  
88% Polyester / 12% Spandex



**GRST124 Carly Top**  
3-pocket, sport neck, rib knit front and back panels, exposed zipper pocket, shirt tail hem  
Sizes: XXS - 3XL, CB: 25.5"  
Color shown: 40 Ciel

Knit Accent Content:  
94% Polyester / 6% Spandex



ANTIMICROBIAL

01 Black	
08 New Royal	
10 White	
23 Indigo	
37 Hunter	•NEW SP
39 Teal	
40 Ciel	
65 Wine	
312 Olive	•NEW SU
328 Bahama	
600 Scarlet	•NEW SU
905 Steel	
512 Brilliance	•NEW SP
2188 Pink Lemonade	•NEW SU

**GRST001 Kim Top**  
3-pocket, V-neck surplice with front and back princess seams, zip front pocket  
Sizes: XXS - 5XL, CB: 26"  
Color shown: 600 Scarlet



**GRST045 Serena Top**  
3-pocket, ribbed V-neck, PDA pocket, logo tape side slit detail, rib knit back insets with princess seam, straight hem  
Sizes: XXS - 3XL, CB: 25.5"  
Color shown: 08 New Royal

Knit Accent Content:  
94% Polyester / 6% Spandex



ANTIMICROBIAL

01 Black	
08 New Royal	
10 White	
23 Indigo	
37 Hunter	•NEW SP
39 Teal	
40 Ciel	
65 Wine	
312 Olive	•NEW SU
328 Bahama	
471 Moonstruck	•NEW SU
600 Scarlet	•NEW SU
905 Steel	
512 Brilliance	•NEW SP
2188 Pink Lemonade	•NEW SU

All Styles Main Fabric  
74% Polyester / 23% Rayon / 3% Spandex twill

**G** denotes colors supported for Groups



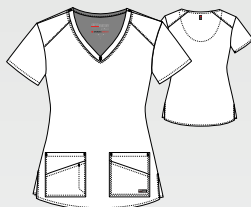
### 41435S Scuba Top

3-pocket, short sleeve V-neck  
color block, with detail back  
Sizes: XXS - 3XL, CB: 25.5"  
Color shown: LGMW  
Lemon Glow/Moonstruck/  
White



### GRST011 Emma Top

4-pocket, V-neck with  
angled seams  
Sizes: XXS - 5XL, CB: 26"  
Color shown: 39 Teal



### GRSP526 Serena Pant

7-pocket, duchess knit waistband  
with drawcord, mid-rise, patch  
pockets, double cargo, slit hem,  
logo tape detail tapered leg  
Sizes: XXS - 3XL, I: 30"  
XSP - XLP, I: 28"  
XST - XLT, I: 32"  
Color shown: 905 Steel

Knit Accents Content:  
88% Polyester / 12% Spandex



### GRSP527 Carly Jogger

7-pocket, rib trim waistband,  
mid-rise, front slant pockets,  
double cargo pocket, zipper  
PDA, rib knit cuff jogger  
Sizes: XXS - 3XL, I: 29"  
XSP - XLP, I: 27"  
XST - XLT, I: 31"  
Color shown: 40 Ciel

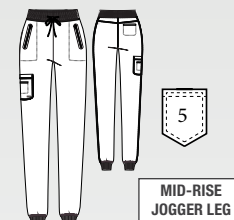
Knit Accents Content:  
94% Polyester / 6% Spandex



### GRSP537 Eden Jogger

5-pocket, knit rib drawcord  
waistband, zipper front pockets,  
double single cargo, ribbed  
cuff jogger  
Sizes: XXS - 3XL, I: 29"  
XXSP - XLP, I: 27"  
XST - XLT, I: 31"  
Color shown: 312 Olive

Knit Accents Content:  
94% Polyester / 6% Spandex



## ANTIMICROBIAL ANTIMICROBIAL

01 Black	G
08 New Royal	G
10 White	G
23 Indigo	G
37 Hunter	G
39 Teal	G
40 Ciel	G
65 Wine	G
312 Olive	G
328 Bahama	G
471 Moonstruck	
600 Scarlet	
905 Steel	
1277 Eggplant	G
LGMW	•NEW SU
TTBM	•NEW 1/15

01 Black	G
08 New Royal	G
10 White	G
23 Indigo	G
37 Hunter	•NEW SP
39 Teal	G
40 Ciel	G
65 Wine	G
312 Olive	G
328 Bahama	G
471 Moonstruck	•NEW SU
600 Scarlet	•NEW SU
905 Steel	
1277 Eggplant	G
2183 Lemon Glow	•NEW SU
2253 Tropical Tide	•NEW 1/15

01 Black	
08 New Royal	
10 White	
23 Indigo	
37 Hunter	•NEW SP
39 Teal	
40 Ciel	
65 Wine	
312 Olive	•NEW SU
328 Bahama	
471 Moonstruck	•NEW SU
600 Scarlet	•NEW SU
905 Steel	
512 Brilliance	•NEW SP
2188 Pink Lemonade	•NEW SU

01 Black	G
08 New Royal	G
10 White	G
23 Indigo	G
37 Hunter	•NEW SP
39 Teal	G
40 Ciel	G
65 Wine	G
312 Olive	G
328 Bahama	G
471 Moonstruck	
905 Steel	G
2183 Lemon Glow	•NEW SU
2253 Tropical Tide	•NEW 1/15

**G** denotes colors supported for Groups

All Styles Main Fabric  
74% Polyester / 23% Rayon / 3% Spandex twill



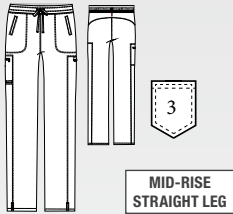


**GRSP500 Kim Pant**

3-pocket, logo plush elastic back waistband, zip cargo pocket

Sizes: XXS - 5XL, I: 31"  
XXSP - 2XLP, I: 29"  
XXST - XLT, I: 33.5"  
Color shown: 600 Scarlet

Knit Accents Content:  
88% Polyester / 12% Spandex



01 Black	G
08 New Royal	G
10 White	G
23 Indigo	G
37 Hunter	G
39 Teal	G
40 Ciel	G
65 Wine	G
312 Olive	G
328 Bahama	G
471 Moonstruck	
600 Scarlet	
905 Steel	G
1277 Eggplant	
2253 Tropical Tide	•NEW 1/15

**GVSP509 Harper Pant**

3-pocket, mid-rise cargo with knit elastic waist and heather drawcord

Sizes: XXS - 5XL, I: 30"  
XXSP - XLP, I: 28"  
XXST - XLT, I: 33.5"  
Color shown: 08 New Royal

Knit Accents Content:  
88% Polyester / 12% Spandex



01 Black	
08 New Royal	
23 Indigo	
39 Teal	
40 Ciel	
65 Wine	
312 Olive	
328 Bahama	
471 Moonstruck	
905 Steel	

**GRSW017 Millie Jacket**

3-pocket, rib neck, zip front placket, PDA and zip pocket, princess seamed front, back seams and ribbed cuff

Sizes: XS - 3XL, CB: 26"  
Color shown: 65 Wine

Knit Accent Content:  
94% Polyester / 6% Spandex



01 Black	G
08 New Royal	G
10 White	G
23 Indigo	G
39 Teal	G
40 Ciel	G
65 Wine	G
312 Olive	G
328 Bahama	G
905 Steel	G

**GRSW873 Gianna Warm-Up**

5-pocket, round neck, zip front, PDA and zipper pocket, rib back panel, rib cuff warm-up

Sizes: XXS - 3XL, CB: 25.5"  
Color shown: 23 Indigo

Knit Accent Content:  
94% Polyester / 6% Spandex



**ANTIMICROBIAL**

01 Black	
08 New Royal	
10 White	
23 Indigo	
37 Hunter	•NEW 1/15
39 Teal	
40 Ciel	
65 Wine	
312 Olive	•NEW SU
328 Bahama	
471 Moonstruck	•NEW SU
600 Scarlet	•NEW SU
905 Steel	

**All Styles Main Fabric**

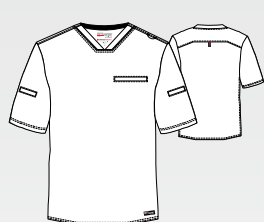
74% Polyester / 23% Rayon / 3% Spandex twill

**G** denotes colors supported for Groups



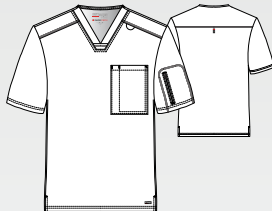
### GRST009 Wesley Top

3-welt pocket, sport V-neck with angled back yoke  
 Sizes: XS - 5XL, CB: 29"  
 Color shown: 37 Hunter



### GRST079 Murphy Top

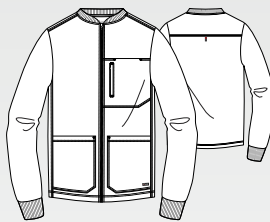
2-pocket, V-neck shaped chest pocket, zipper sleeve pocket top  
 Sizes: XS - 5XL, CB: 29"  
 Color shown: 23 Indigo



### ANTIMICROBIAL

### GRSW871 React Warm-Up

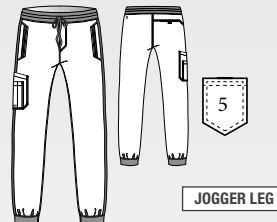
5-pocket knit stand collar with zipper front, chest patch, zipper welt pocket, chin guard, and knit cuff warm-up  
 Sizes: XS - 5XL, CB: 29"  
 Color shown: 905 Steel  
 Knit Accents Content: 94% Polyester / 6% Spandex



### ANTIMICROBIAL

### GRSP550 Murphy Jogger

5-pocket, rib knit with plush elastic embedded waistband, two-tone drawcord, front zipper fly, zipper front pockets, angled single double cargo pocket, single back pocket, rib knit cuff jogger  
 Sizes: XS - 5XL, I: 29"  
 XSS - 2XLS, I: 27"  
 XST - XLT, I: 31"  
 Color shown: 40 Ciel  
 Knit Accents Content: 94% Polyester / 6% Spandex



### ANTIMICROBIAL

### GRSP507 Wesley Pant

4-pocket, belt closure waist with zip fly cargo  
 Sizes: XS - 5XL, I: 32"  
 Color shown: 328 Bahama



STRAIGHT LEG

01 Black	G
08 New Royal	G
10 White	G
23 Indigo	G
37 Hunter	G
40 Ciel	G
65 Wine	G
328 Bahama	G
905 Steel	G

01 Black	G
08 New Royal	G
10 White	G
23 Indigo	G
37 Hunter	•NEW 1/15
39 Teal	
40 Ciel	G
65 Wine	G
312 Olive	•NEW SU
328 Bahama	G
471 Moonstruck	•NEW SU
905 Steel	G

01 Black	G
08 New Royal	G
10 White	G
23 Indigo	G
37 Hunter	•NEW 1/15
39 Teal	
40 Ciel	G
65 Wine	G
312 Olive	•NEW SU
328 Bahama	G
905 Steel	G

01 Black	G
08 New Royal	G
10 White	G
23 Indigo	G
37 Hunter	•NEW 1/15
39 Teal	
40 Ciel	G
65 Wine	G
312 Olive	•NEW SU
328 Bahama	G
471 Moonstruck	•NEW SU
905 Steel	G

01 Black	G
08 New Royal	G
10 White	G
23 Indigo	G
37 Hunter	G
40 Ciel	G
65 Wine	G
328 Bahama	G
905 Steel	G

**G** denotes colors supported for Groups

All Styles Main Fabric  
 74% Polyester / 23% Rayon / 3% Spandex twill



**GIT033 Moto Top**

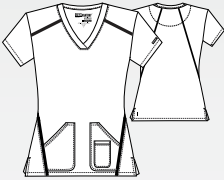
3-pocket, shaped V-neck  
moto inspired pintucks,  
front and back princess  
seams, Barco Tape details  
Sizes: XXS - 3XL, CB: 25.5"  
Color shown: 65 Wine



01 Black
08 New Royal
23 Indigo
65 Wine
312 Olive
905 Steel
2144 Rosy Coral •NEW SP

**7188 Elevate Top**

3-pocket, crossover V-neck  
with Barco Tape\* detailing  
at front and back seaming,  
including 2 patch pockets  
with utility pocket  
Sizes: XXS - 3XL, CB: 25.5"  
Color shown: 328 Bahama



01 Black
08 New Royal
23 Indigo
37 Hunter
40 Ciel
65 Wine
312 Olive
328 Bahama
905 Steel
2144 Rosy Coral •NEW SP
2255 Mint Cream •NEW SU

**7187 Harmony Top**

3-pocket, V-neck with Barco  
Tape\* detailing, aerodynamic  
shaped hem, titanium colored  
utility ring and t-back seaming  
Sizes: XXS - 3XL, CB: 26"  
Color shown: 23 Indigo  
Inside Sleeve Space dye knit:  
49% Polyester/45% Nylon  
6% Spandex



01 Black
08 New Royal
23 Indigo
40 Ciel
65 Wine
328 Bahama
905 Steel

**All Styles Main Fabric**  
74% Polyester/23% Rayon/3% Spandex





### GIP507 Moto Pant

6-pocket, flat front, drawcord elastic back waistband, mid-rise, slant front and back pockets, double cargo, moto inspired pintuck with Barco Tape details tapered leg pant  
 Sizes: *XXS - 3XL, I: 30.5"*  
*XSP - XLP, I: 28.5"*  
*XST - XLT, I: 32.5"*  
 Color shown: 01 Black

Knit Accent Content:  
 88% Polyester / 12% Spandex

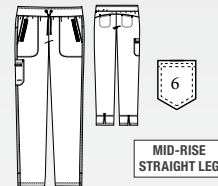


01 Black
08 New Royal
23 Indigo
65 Wine
312 Olive
905 Steel
2144 Rosy Coral •NEW SP

### 7228 Elevate Pant

6-pocket, mid-rise straight leg cargo with hidden welt pocket, knit comfort elastic waistband, grommet eyes with titanium colored tipped ties, back vents at hem and Barco Tape\* detailing  
 Sizes: *XXS - 3XL, I: 31.5"*  
*XXSP - XLP, I: 29.5"*  
*XXST - XLT, I: 33.5"*  
 Color shown: 40 Ciel

Knit Accent Content:  
 88% Polyester / 12% Spandex



01 Black
08 New Royal
23 Indigo
37 Hunter
40 Ciel
65 Wine
312 Olive
328 Bahama
905 Steel
2144 Rosy Coral •NEW SP
2255 Mint Cream •NEW SU

**All Styles Main Fabric**  
 74% Polyester / 23% Rayon / 3% Spandex



**GNT086 London Top**

4-pocket, zipper V-neck,  
 zipper PDA, pen slot pocket  
 with shirt tail hem

Sizes: XXS - 3XL, CB: 25.5"

Color shown:

1560 Shadow Shade

**GNT019 Astra Top**

3-extra deep pockets, V-neck  
 with laced sleeve detail,  
 high-low hem rounded back

Sizes: XXS - 3XL, CB: 26"

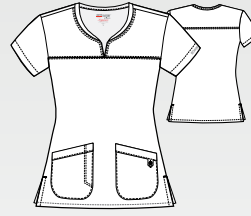
Color shown: 65 Wine

**2121 Callie Top**

2-pocket, notch neck with  
 tab detail and pen slot,  
 split needle, front and  
 back yoke

Sizes: XXS - 5XL, CB: 26"

Color shown: 23 Indigo

**2407 Bella Warm-Up**

2-pocket, jewel neck snap  
 front with princess seams,  
 banded sides, back detail,  
 and knit sock cuffs

Sizes: XXS - 5XL, CB: 27"

Color shown: 08 New Royal

Knit sock cuff:

100% Polyester

**ANTIMICROBIAL**

01 Black

08 New Royal

23 Indigo

1560 Shadow Shade

1561 Wine Shade

01 Black

08 New Royal

10 White

40 Ciel

65 Wine

142 Graphite

312 Olive

328 Bahama

01 Black

08 New Royal

23 Indigo

142 Graphite

01 Black

08 New Royal

23 Indigo

142 Graphite

**WHILE SUPPLIES LAST****All Styles Main Fabric**

71% Polyester/24% Rayon/5% Spandex



### GNP553 London Jogger

7-pocket, shades contrast waistband, mid-rise, double cargo, trouser jogger pant  
 Sizes: *XXS - 3XL, I: 28.5"*  
*XSP - XLP, I: 26.5"*  
*XST - XLT, I: 30.5"*  
 Color shown: *RSS New Royal/Shadow Shade*



MID-RISE  
JOGGER LEG

### GNP508 Astra Pant

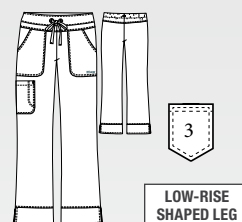
4-pocket, flat front with inside drawcord, elastic back, side entry and welt cargo pockets, with back spade pocket and straight leg  
 Sizes: *XXS - 3XL, I: 31.5"*  
*XSP - XLP, I: 29.5"*  
*XST - XLT, I: 33.5"*  
 Color shown: *312 Olive*



MID-RISE  
STRAIGHT LEG

### 2207 Callie Pant

3-pocket, cargo, low-rise shaped leg, tie front and elastic back  
 Sizes: *XXS - 5XL, I: 31.5"*  
*XXSP - 2XLP, I: 29.5"*  
*XXST - XLT, I: 33.5"*  
 Color shown: *23 Indigo*



LOW-RISE  
SHAPED LEG

## ANTIMICROBIAL

<b>BHS Black</b>
<b>RSS New Royal</b>
<b>IDS Indigo</b>
<b>1560 Shadow Shade</b>
<b>1561 Wine Shade</b>

<b>01 Black</b>
<b>08 New Royal</b>
<b>10 White</b>
<b>40 Ciel</b>
<b>65 Wine</b>
<b>142 Graphite</b>
<b>312 Olive</b>
<b>328 Bahama</b>

<b>01 Black</b>
<b>08 New Royal</b>
<b>23 Indigo</b>
<b>142 Graphite</b>

**WHILE SUPPLIES LAST**

**All Styles Main Fabric**  
 71% Polyester / 24% Rayon / 5% Spandex





**GRT049 Kira Top**

4-pocket, knit V-neck, love zipper pocket, love inside neck tape, knit sleeve hem, front and back princess seams top  
Sizes: XS - 3XL, CB: 25.5"  
Color shown: 65 Wine

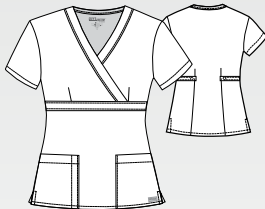
Zipper:  
100% Nylon



01 Black
08 New Royal
10 White
23 Indigo
37 Hunter
39 Teal
40 Ciel
65 Wine
328 Bahama
471 Moonstruck
905 Steel

**4153 Riley Top**

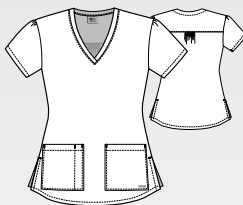
3-pocket, mock wrap with tab back  
Sizes: XXS - 5XL, CB: 25"  
Color shown: 23 Indigo



01 Black
08 New Royal
23 Indigo
37 Hunter
40 Ciel
905 Steel

**71166 Aubrey Top**

2-pocket, V-neck with pen slot and Shirred back yoke  
Sizes: XS - 5XL, CB: 26"  
Color shown: 37 Hunter



01 Black
08 New Royal
23 Indigo
37 Hunter
40 Ciel
65 Wine
600 Scarlet
905 Steel
910 Granite

**41423 Cora Top**

4-pocket, crossover V-neck with side panels, zipper pocket and tulip sleeve detail, fitted back  
Sizes: XXS - 5XL, CB: 25.5"  
Color shown: 39 Teal



01 Black
08 New Royal
10 White
23 Indigo
37 Hunter
39 Teal
40 Ciel
65 Wine
328 Bahama
471 Moonstruck
503 Galaxy
549 Purple Rain
600 Scarlet
905 Steel
910 Granite

All Styles Main Fabric  
77% Polyester/23% Rayon

**G** denotes colors supported for Groups



### 4277 Mia Pant

6-pocket, flat front, knit elastic back waistband with drawcord, double cargo, back pockets mid-rise

Sizes: XXS - 5XL, I: 31.5"

XXSP - 2XLP, I: 29.5"

XXST - XLT, I: 33.5"

Color shown: 503 Galaxy

Knit Accents Content:

88% Polyester/12% Spandex



MID-RISE  
SHAPED LEG

01 Black	G
08 New Royal	G
10 White	G
23 Indigo	G
37 Hunter	G
39 Teal	G
40 Ciel	G
65 Wine	G
328 Bahama	G
471 Moonstruck	
503 Galaxy	
549 Purple Rain	G
600 Scarlet	
905 Steel	G
910 Granite	

### GRP534 Kira Jogger

5-pocket, tunnel drawcord waistband, mid-rise, double cargo with zipper pocket, tailored side seam knit cuff jogger

Sizes: XS - 3XL, I: 28"

XSP - XLP, I: 26"

XST - XLT, I: 30"

Color shown: 08 New Royal

Knit Accents Content:

94% Polyester / 6% Spandex



MID-RISE  
JOGGER LEG

01 Black	
08 New Royal	
10 White	
23 Indigo	
37 Hunter	
39 Teal	
40 Ciel	
65 Wine	
328 Bahama	
471 Moonstruck	
905 Steel	

### 4275 Aubrey Pant

3-pocket, logo plush elastic waistband pant with drawcord

Sizes: XXS - 5XL, I: 31"

XXSP - XLP, I: 29"

XXST - XLT, I: 33"

Color shown: 65 Wine



LOW-RISE  
SHAPED LEG

01 Black	
08 New Royal	
23 Indigo	
37 Hunter	
40 Ciel	
65 Wine	
328 Bahama	
905 Steel	
910 Granite	

### 4232 Riley Pant

5-pocket, tie front elastic back, mid-rise flare leg

Sizes: XXS - 5XL, I: 31.5"

XXSP - 2XLP, I: 29.5"

XXST - XLT, I: 33.5"

Color shown: 08 New Royal



MID-RISE  
FLARE LEG

01 Black	
08 New Royal	
23 Indigo	
37 Hunter	
40 Ciel	
905 Steel	

**G** denotes colors supported for Groups

All Styles Main Fabric  
77% Polyester/23% Rayon



**GRP560 Lilah Maternity Pant**

1-pocket, knit maternity waistband with single cargo pocket pant  
Sizes: XS - 2XL, I: 31"  
Color shown: 23 Indigo

Knit Accents Content:  
88% Polyester/12% Spandex



01 Black
08 New Royal
23 Indigo
905 Steel

**GRT094 Lilah Maternity Top**

2-pocket, mock wrap empire line top with tie and fitted back  
Sizes: XS - 2XL, CB: 27"  
Color shown: 23 Indigo



01 Black
08 New Royal
23 Indigo
905 Steel

**4450 Jamie Warm-Up**

4-pocket, round neck warm-up with logo snaps and dyed-to-match knit cuffs with fitted back  
Sizes: XS - 5XL, CB: 28"  
Color shown: 10 White

Knit Accents Content:  
100% Polyester



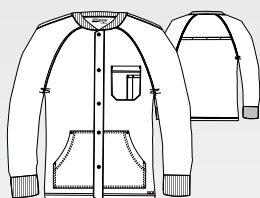
01 Black
08 New Royal
10 White
23 Indigo
37 Hunter
39 Teal
40 Ciel
65 Wine
328 Bahama
503 Galaxy
549 Purple Rain
905 Steel
910 Granite

All Styles Main Fabric  
77% Polyester/23% Rayon

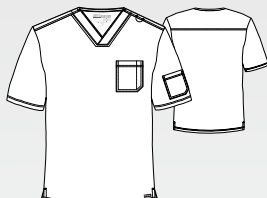




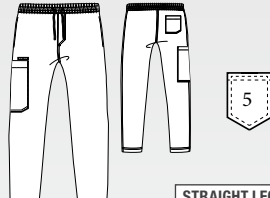
*Knit Accents Content:*  
*60% Polyester/40% Cotton*



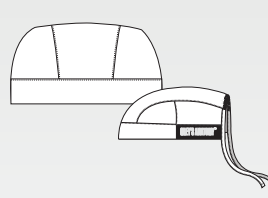
2-pocket, lapover V-neck,  
contrast badge loop at  
left shoulder, chest pocket  
with pen slot, single sleeve  
pocket with side vents  
*Sizes: XS - 5XL, CB:29"*  
*Color shown:*  
*549 Purple Rain*



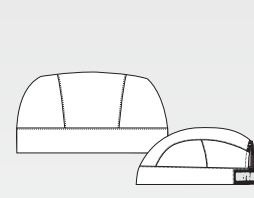
5-pocket, full elastic waistband with contrast drawcord, front zip fly, both side entry hand pockets, one right back patch pocket, and one single double left cargo pocket  
*Sizes: XS - 5XL, I: 32"*  
*XST - XLT, I: 34"*  
*XSS-XLS, I: 30"*  
*Color shown: 910 Granite*



Unisex fitted cap with plush logo  
elastic side and self tie back  
*One size*  
*Color shown: 37 Hunter*



Unisex fitted cap with plush logo  
elastic back  
*One size*  
*Color shown: 08 New Royal*



## WHILE SUPPLIES LAST

This section displays three color swatches, each consisting of a solid color bar at the top and a patterned area below. The first swatch is labeled '01 Black' and features a pattern of thin, light gray diagonal lines on a black background. The second swatch is labeled '23 Indigo' and features a pattern of thin, light gray diagonal lines on a dark blue background. The third swatch is labeled '905 Steel' and features a pattern of thin, light gray diagonal lines on a dark gray background.

01 Black	G
08 New Royal	G
10 White	G
23 Indigo	G
37 Hunter	G
39 Teal	G
40 Ciel	G
65 Wine	G
328 Bahama	G
503 Galaxy	
549 Purple Rain	G
905 Steel	G
910 Granite	

01 Black	6
08 New Royal	6
10 White	6
23 Indigo	6
37 Hunter	6
39 Teal	6
40 Ciel	6
65 Wine	6
328 Bahama	6
503 Galaxy	6
549 Purple Rain	6
905 Steel	6
910 Granite	6

01 Black

08 New Royal

23 Indigo

37 Hunter

905 Steel

**01 Black**

**08 New Royal**

**23 Indigo**

**37 Hunter**

**905 Steel**

**G** denotes colors supported for Groups

**All Styles Main Fabric**  
77% Polyester/23% Rayon



### BOT142 Uplift Top

2-pocket, scoop neck, perforated chest patch pocket, sleeve zipper pocket, perforated sleeves, knit and perforated body panels, curved seaming, high-low hem tuck-in top  
**Sizes:** XXS - 5XL, **CB:** 26"  
**Color shown:** 2096 Lavender Winds

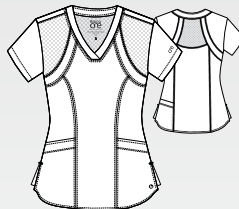
**Knit Accents Content:**  
 88% Polyester/12% Spandex



01 Black	
08 New Royal	
23 Indigo	
65 Wine	•NEW 1/15
328 Bahama	•NEW 1/15
905 Steel	
2185 Dark Jade	•NEW SP
2096 Lavender Winds	•NEW SU

### 5105 Racer Top

4-pocket, V-neck with princess seaming and perforated panel details in front and back  
**Sizes:** XXS - 5XL, **CB:** 25.5"  
**Color shown:** 114 Cobalt



01 Black	G
08 New Royal	G
23 Indigo	G
37 Hunter	G
39 Teal	
40 Ciel	G
65 Wine	G
114 Cobalt	G
328 Bahama	G
905 Steel	G
2185 Dark Jade	•NEW SP
2096 Lavender Winds	•NEW SU

### 5106 Pulse Top

5-pocket, shaped V-neck with sporty seaming, perforated panels in front and back  
**Sizes:** XXS - 5XL, **CB:** 25.5"  
**Color shown:** 328 Bahama



01 Black	G
08 New Royal	G
23 Indigo	G
37 Hunter	G
39 Teal	
40 Ciel	G
65 Wine	G
114 Cobalt	G
328 Bahama	G
905 Steel	G

#### All Styles Main Fabric

50% Polyester/43% Recycled Polyester/7% Spandex

**G** denotes colors supported for Groups



### BOP597 Uplift Pant

5-pocket, knit waistband with drawcord, front and back welt pockets, single double cargo pocket, perforated hip and leg panels.

Sizes: XXS - 5XL, I: 30"

XXSP - XLP, I: 28"

XXST - XLT, I: 32"

Color shown: 2185 Dark Jade

Knit Accents Content:

88% Polyester/12% Spandex



01 Black	
08 New Royal	
23 Indigo	
65 Wine	•NEW 1/15
328 Bahama	•NEW 1/15
905 Steel	
2185 Dark Jade	•NEW SP
2096 Lavender Winds	•NEW SU

### BOP513 Boost Jogger

3-pocket, double elastic waist with drawcord and perforated blocked detail leg

Sizes: XXS - 5XL, I: 30.5"

XXSP - XLP, I: 28.5"

XXST - XLT, I: 33.5"

Color shown: 65 Wine

Knit Accents Content:

88% Polyester/12% Spandex



01 Black	G
08 New Royal	G
23 Indigo	G
37 Hunter	G
39 Teal	
40 Ciel	G
65 Wine	G
114 Cobalt	G
328 Bahama	G
905 Steel	G
2185 Dark Jade	•NEW SP
2096 Lavender Winds	•NEW SU

### 5206 Stride Pant

5-pocket, yoga pant with cargo pocket, knit waistband and drawcord

Sizes: XXS - 5XL, I: 31.5"

XXSP - XLP, I: 29.5"

XXST - XLT, I: 33.5"

Color shown: 39 Teal

Knit Accents Content:

88% Polyester/12% Spandex



01 Black
08 New Royal
23 Indigo
37 Hunter
39 Teal
40 Ciel
65 Wine
114 Cobalt
328 Bahama
905 Steel

**G** denotes colors supported for Groups

All Styles Main Fabric

50% Polyester/43% Recycled Polyester/7% Spandex



5405 Endure Jacket

2-pocket, mock neck zip front with princess seams, side zip pockets, high-low hem

Sizes: XXS - 5XL, CB: 26"

Color shown: 08 New Royal

Zippers are all black except white has white zipper



01 Black
08 New Royal
23 Indigo
39 Teal
114 Cobalt
905 Steel

5409 Cadence Warm-Up

4-pocket, jewel neck with perforated racer style insets, dyed-to-match snap front, hidden pocket, zipper pocket with logo pull, high-low hem, and seamless knit sock cuff

Sizes: XXS - 5XL, CB: 27"

Color shown: 65 Wine

Knit Accents Content:  
80% Polyester/20% Spandex



01 Black	G
08 New Royal	G
23 Indigo	G
37 Hunter	G
40 Ciel	G
65 Wine	G
114 Cobalt	G
328 Bahama	G
905 Steel	G

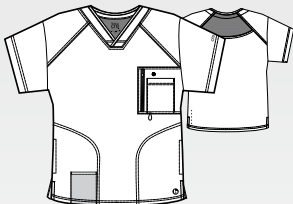
0115 Men's Amplify Top

5-pocket V-neck with raglan sleeve details, hidden pocket and chest pocket with a secure zip media pocket

Sizes: XS - 5XL, CB: 30"

Color shown: 37 Hunter

All zippers are black



01 Black	G
08 New Royal	G
23 Indigo	G
37 Hunter	G
39 Teal	
40 Ciel	G
65 Wine	G
114 Cobalt	G
328 Bahama	G
905 Steel	G

All Styles Main Fabric

50% Polyester/43% Recycled Polyester/7% Spandex

**G** denotes colors supported for Groups





### BOP520 Men's Vortex Pant

6-pocket, drawcord full elastic waistband, single zip double cargo, inside coin pocket and perforated details jogger

Sizes: XS - 5XL, I: 30"

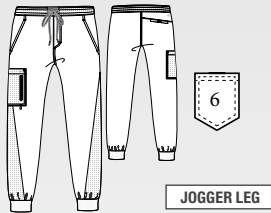
ST - XLT, I: 32"

XSS - 3XLS, I: 28"

Color shown: 905 Steel

Knit Accents Content:

94% Polyester/6% Spandex



JOGGER LEG

01 Black	G
08 New Royal	G
23 Indigo	G
37 Hunter	•NEW SU
65 Wine	•NEW SP
114 Cobalt	•NEW SU
328 Bahama	•NEW SP
905 Steel	G

### 0217 Men's Amplify Pant

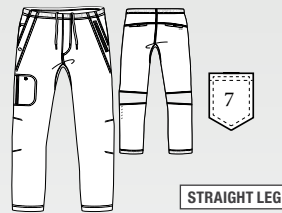
7-pocket, elastic waist cargo with drawcord, back perforated knee panels and functional zip fly front with gusseted inseam

Sizes: XS - 5XL, I: 32"

ST - XLT, I: 34"

XSS - 3XLS, I: 30"

Color shown: 65 Wine



STRAIGHT LEG

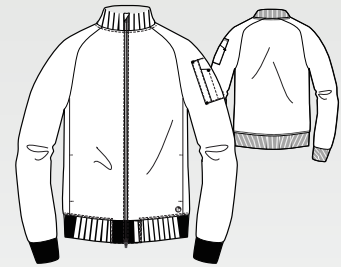
01 Black	G
08 New Royal	G
23 Indigo	G
37 Hunter	G
39 Teal	
40 Ciel	G
65 Wine	G
114 Cobalt	G
328 Bahama	G
905 Steel	G

### BOW883 Amplify Warm-Up **NEW**

3-pocket bomber, knit neck and knit cuffs on raglan sleeves, 2-way zipper with cover, secure zip closure shoulder pocket with pen slots warm-up

Sizes: XS - 5XL, CB: 28"

Color shown: 23 Indigo



01 Black	•NEW SP
23 Indigo	•NEW SP

**G** denotes colors supported for Groups

**All Styles Main Fabric**

50% Polyester/43% Recycled Polyester/7% Spandex



**SKT147 Dignity Tuck-In Top**  
1-pocket, V-neck with contrast rib, front yoke seam with badge loop, single chest pocket, high-low hem tuck-in top  
Sizes: XXS - 5XL, CB: 26"  
Color shown: 2067 Autumn Berry



01 Black	
08 New Royal	
10 White	•NEW 1/15
18 Pewter	
37 Hunter	•NEW 1/15
40 Ciel	•NEW SP
41 Navy	
65 Wine	
328 Bahama	•NEW SP
2067 Autumn Berry	
2189 Lime Juice	•NEW SP

**SK102 Reliance Top**  
3-pocket, V-neck surplice with front princess seams, side vent detail, contrast back neck binding  
Sizes: XXS - 5XL, CB: 25.5"  
Color shown: 1277 Eggplant



01 Black	G
08 New Royal	G
10 White	G
18 Pewter	G
37 Hunter	G
39 Teal	G
40 Ciel	G
41 Navy	G
65 Wine	G
230 Khaki	
328 Bahama	
503 Galaxy	G
1276 New Grape	
1277 Eggplant	
1295 True Red	
1659 New Turquoise	
1254 Coral Lipstick	
2067 Autumn Berry	

**SK101 Breeze Top**  
3-pocket, virtual V-neck, shaped hem, detailed cover stitching, contrast back neck binding  
Sizes: XXS - 5XL, CB: 25.5"  
Color shown: 40 Ciel



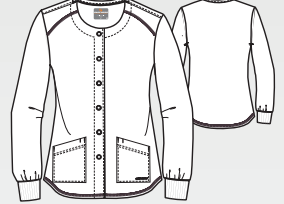
01 Black	G
08 New Royal	G
10 White	G
18 Pewter	G
37 Hunter	G
39 Teal	G
40 Ciel	G
41 Navy	G
65 Wine	G
230 Khaki	
328 Bahama	G
503 Galaxy	G
1276 New Grape	G
1277 Eggplant	G
1295 True Red	
1659 New Turquoise	G
1254 Coral Lipstick	
2067 Autumn Berry	
2189 Lime Juice	•NEW SP

**SKT025 Focus Top**  
6-pocket crossover V-neck with side entry pockets, PDA pocket and mini spade pocket  
Sizes: XXS - 5XL, I: 25.5"  
Color shown: 39 Teal



01 Black	
08 New Royal	
10 White	
18 Pewter	
37 Hunter	
39 Teal	
40 Ciel	
41 Navy	
65 Wine	
328 Bahama	
1276 New Grape	•NEW SP
1277 Eggplant	•NEW 1/15
1295 True Red	
1254 Coral Lipstick	
2067 Autumn Berry	

**SK401 Stability Warm-Up**  
2-pocket, round neck, snap front closure, dyed-to-match seamless knit sock cuff sleeves, contrast back neck binding  
Sizes: XS - 5XL, CB: 27"  
Color shown: 37 Hunter  
Seamless Cuff:  
100% Polyester



01 Black	G
08 New Royal	G
10 White	G
18 Pewter	G
37 Hunter	G
39 Teal	G
40 Ciel	G
41 Navy	G
65 Wine	G
230 Khaki	
328 Bahama	G
503 Galaxy	G
1276 New Grape	G
1277 Eggplant	G
1295 True Red	
1659 New Turquoise	G

**All Styles Main Fabric**  
54% Polyester/40% Recycled Polyester/6% Spandex

**G** denotes colors supported for Groups



### SKP552 Theory Jogger

4-pocket, drawcord waistband  
mid-rise, with double cargo  
pocket and pen slot  
Sizes: XXS - 5XL, I: 29"  
XXSP - XLP, I: 27"  
XST - XLT, I: 31"  
Color shown: 65 Wine

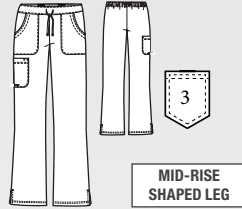
Knit Accents Content:  
88% Polyester/12% Spandex



01 Black	G
08 New Royal	G
10 White	G
18 Pewter	G
37 Hunter	G
39 Teal	•NEW SP
40 Ciel	G
41 Navy	G
65 Wine	G
230 Khaki	
328 Bahama	G
1295 True Red	•NEW SP
2067 Autumn Berry	
2189 Lime Juice	•NEW SP

### SK201 Reliance Pant

3-pocket, flat front with tape  
tie, branded, inside logo plush  
elastic waistband, cargo pocket  
Sizes: XXS - 5XL, I: 31.5"  
XXSP - 2XLP, I: 29.5"  
XXST - XLT, I: 33.5"  
Color shown: 39 Teal



01 Black	G
08 New Royal	G
10 White	G
18 Pewter	G
37 Hunter	G
39 Teal	G
40 Ciel	G
41 Navy	G
65 Wine	G
230 Khaki	
328 Bahama	G
503 Galaxy	
1276 New Grape	
1277 Eggplant	
1295 True Red	
1659 New Turquoise	
1254 Coral Lipstick	
2067 Autumn Berry	
2189 Lime Juice	•NEW SP

### SK202 Breeze Pant

3-pocket, logo plush elastic  
waistband, cargo pocket  
Sizes: XXS - 5XL, I: 31.5"  
XXSP - 2XLP, I: 29.5"  
XXST - XLT, I: 33.5"  
Color shown: 1295 True Red



01 Black	G
08 New Royal	G
10 White	G
18 Pewter	G
37 Hunter	G
39 Teal	G
40 Ciel	G
41 Navy	G
65 Wine	G
230 Khaki	G
328 Bahama	G
503 Galaxy	G
1276 New Grape	G
1277 Eggplant	
1295 True Red	G
1659 New Turquoise	
1254 Coral Lipstick	
2067 Autumn Berry	

### SKP505 Focus Pant

3-pocket, contrast drawcord knit  
waistband mid-rise shaped leg  
with knit trim slant pockets and  
single welt cargo  
Sizes: XXS - 5XL, I: 31.5"  
XXSP - 2XLP, I: 29.5"  
XST - XLT, I: 33.5"  
Color shown: 328 Bahama

Knit Accents Content:  
88% Polyester/12% Spandex



01 Black	
08 New Royal	
10 White	
18 Pewter	
37 Hunter	
39 Teal	
40 Ciel	
41 Navy	
65 Wine	
328 Bahama	
1276 New Grape	
1277 Eggplant	
1295 True Red	
1659 New Turquoise	
1254 Coral Lipstick	
2067 Autumn Berry	

All Styles Main Fabric  
54% Polyester/40% Recycled Polyester/6% Spandex

**G** denotes colors supported for Groups



### SK0112 Structure Top

1-pocket, crossover V-neck top with chest pocket, full running side step-cut side vent detail  
*Sizes: XS - 5XL, CB: 29.5"*  
*Color shown: 08 New Royal*

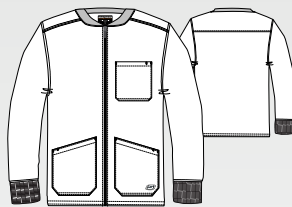


01 Black	G
08 New Royal	G
10 White	G
18 Pewter	G
37 Hunter	G
39 Teal	G
40 Ciel	G
41 Navy	G
65 Wine	G
230 Khaki	G
328 Bahama	G
503 Galaxy	G
1276 New Grape	
1277 Eggplant	G
1295 True Red	G

### SK0408 Structure Warm-Up

3-pocket, rib collar and cuffs, with zip front closure  
*Sizes: XS - 5XL, CB: 30"*  
*Color shown: 328 Bahama*

*Seamless Cuff:*  
*80% Polyester/20% spandex knit*  
*Dyed-to-match Zippers*

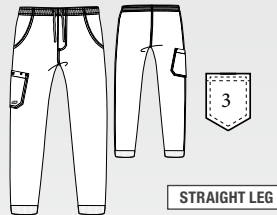


01 Black	G
08 New Royal	G
10 White	G
18 Pewter	G
37 Hunter	G
39 Teal	G
40 Ciel	G
41 Navy	G
65 Wine	G
230 Khaki	G
328 Bahama	G
503 Galaxy	G
1276 New Grape	
1277 Eggplant	G
1295 True Red	G

### SKP572 Structure Jogger

3-pocket, self full encased elastic waistband with drawcord, front fly, velcro closure single patch cargo pocket, rib cuff jogger  
*Sizes: XS - 3XL, I: 29"*  
*SS - XLS, I: 27"*  
*Color shown: 65 Wine*

*Knit Accents Content:*  
*94% Polyester/6% Spandex*

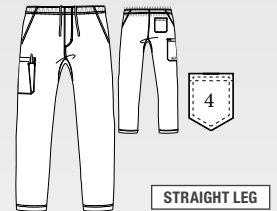


STRAIGHT LEG

01 Black	G
08 New Royal	G
18 Pewter	G
40 Ciel	G
41 Navy	G
65 Wine	G
328 Bahama	G

### SK0215 Structure Pant

4-pocket, full elastic waistband drawcord, inseam gusset, cargo pocket  
*Sizes: XS - 5XL, I: 32"*  
*XSS - XLS, I: 30"*  
*ST - XLT, I: 34"*  
*Color shown: 40 Ciel*



STRAIGHT LEG

01 Black	G
08 New Royal	G
10 White	G
18 Pewter	G
37 Hunter	G
39 Teal	G
40 Ciel	G
41 Navy	G
65 Wine	G
230 Khaki	G
328 Bahama	G
503 Galaxy	G
1276 New Grape	
1277 Eggplant	G
1295 True Red	G

#### All Styles Main Fabric

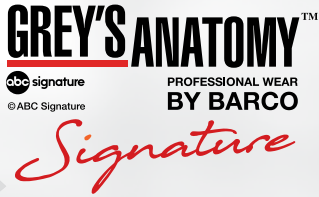
54% Polyester/40% Recycled Polyester/6% Spandex

**G** denotes colors supported for Groups





# LAB COATS



## Fabric Content

70% Polyester / 25% Rayon / 5% Spandex Twill  
WITH 4-WAY STRETCH

Style:	Length:	Sizes:	Tall:	Pockets	Buttons	Description	Sleeve Length:	Sketch:
2405 2405X	31-33.5" 33.5-34.25"	XXS-XL 2XL-5XL	NA		3	Women's round notch collar lab coat, with 2 front pockets, 1 chest pocket, pen slot, and loose back 3 button adjustable back belt.	24-25.25" 24-24.75"	
GNC003 GNC003X	33.5-35.5" 33.5-34.25"	XS-XL 2XL-3XL	NA		1	Women's modern flat collar, snap front closure, inside chest pocket, interior fully lined back vent lab coat	24.25-25.25"	
GNC001 GNC001X	33.5-35.5" 35.5-35.75"	XS-XL 2XL-3XL	NA		3	Women's lab coat with 2 front pockets, long sleeve, princess front and back with 2 back vents	24.25-24.25" 24.25-24.5"	
2402 2402X	35" 35"	XXS-XL 2XL-3XL	NA		3	Women's lab coat with 2 front pockets, back sewn down belt, and front and back princess seams.	24-25.25" 24.5-24.75"	



## Fabric Content

80% Polyester / 20% Cotton Peached Twill

Style:	Length:	Sizes:	Tall:	Pockets	Buttons	Description	Sleeve Length:	Sketch:
GRC950 GRC950X	29-31.5" 31.5-32.25"	XXS-XL 2XL-5XL	NA		4	Women's 2-piece long sleeve lab coat, with button sleeve details and contrast printed lining and cuff facing	24-25.25" 24.5-25.25"	
7446 7446X	30.5-33" 33-33.75"	XXS-XL 2XL-5XL	NA		3	Women's lab coat with button tab front pockets, loose back button belt, and back vent.	23-24.25" 24.25-25"	
4481 4481X	33.5-35.5" 35-35.75"	XS-XL 2XL-5XL	NA		4	Women's lab coat with princess seamed front, up dated rounded collar, inset belt, loose button back belt, and back vent.	23.5-24.5" 24.125-24.875"	
GRC951 GRC951X	33-35.5" 35.5-36.25"	XXS-XL 2XL-5XL			4	Women's 2-piece long sleeve, crossover yoke detail, and belted back waist	24.25-25.5" 24.5-25.25"	
GRSC009	36-38.25"	32-50			3	Men's 3-button, side seam entry slits, button sleeves, back vent lab coat	25.25-27"	
0914 0914X 0914L 0914XL	35.75-37.75" 38-38.75" 39.75-41.75" 42-42.75"	32-48 50-56	36-48L 50-56L		4	Men's lab coat with tablet pockets, inside larger pockets, chest pocket with pen slots center back French seam, and extra length vent.	23.875-25.25" 25.5-26" 24.875-26.25" 26.5-27"	



In honor of the healthcare professionals who go above and beyond to make a difference in our lives, Barco's Nightingales Foundation provides critical resources to children in need. Since 2020, our Foundation has focused its efforts on Haiti, which has the highest hunger rates in the Western hemisphere. Our two dedicated teams make monthly trips to remote villages near our solar wells, traversing rough terrain to deliver food to 6,000 families in hard-to-reach, underserved areas.

Because of your continued support, we're unwavering in our mission to keep hope alive. Thank you for helping to make a difference

**BARCO**  
*Made to Matter*

[barcosnightingales.org](https://barcosnightingales.org)



SCAN HERE FOR  
SPRING SUMMER '23  
CATALOG