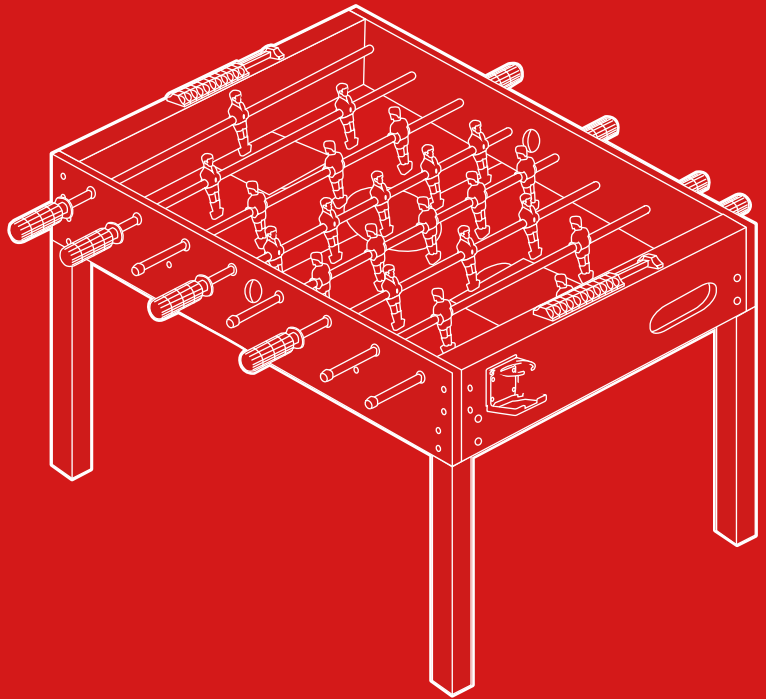




bestchoiceproducts



INSTRUCTION MANUAL

48" Foosball Table

TOOLS REQUIRED


ALLEN WRENCH
(PROVIDED)


PHILLIPS
SCREWDRIVER

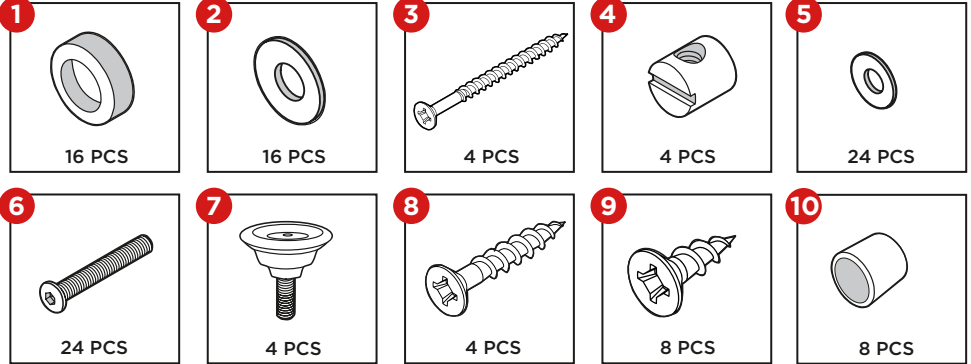


2 PERSON
ASSEMBLY

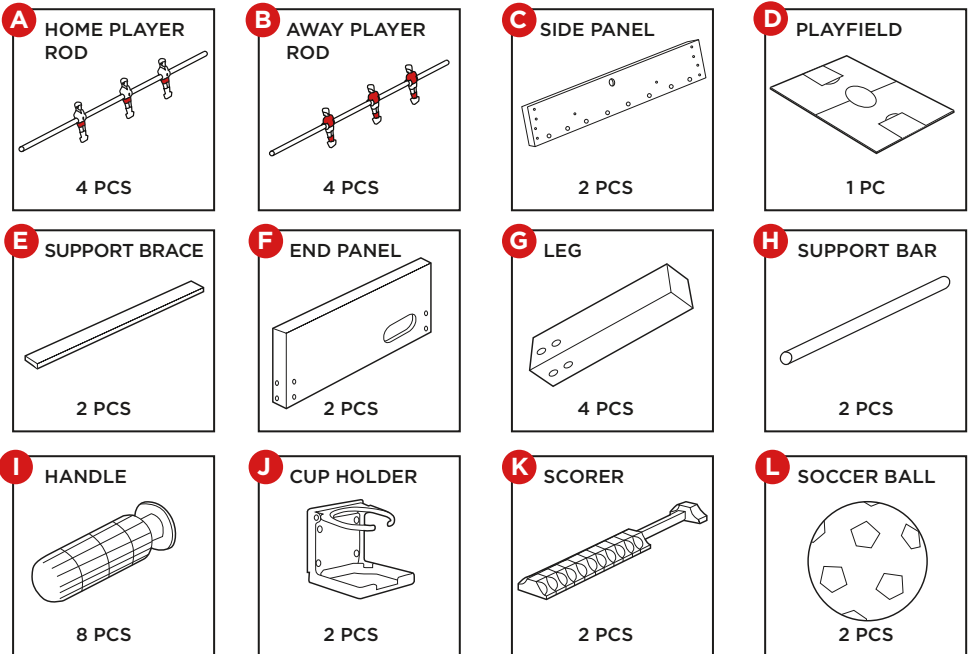


APPROXIMATELY
1 HR
ASSEMBLY

HARDWARE



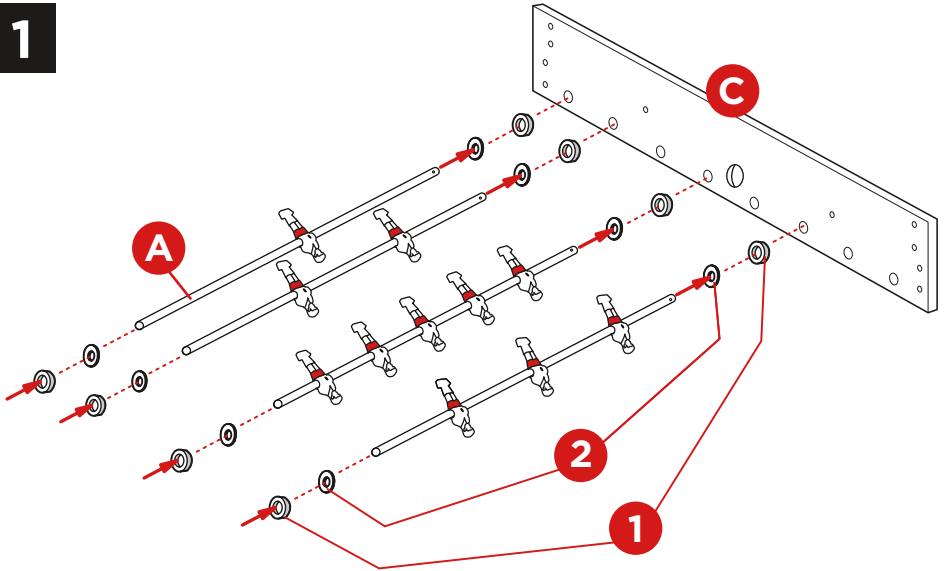
PARTS



PRODUCT ASSEMBLY

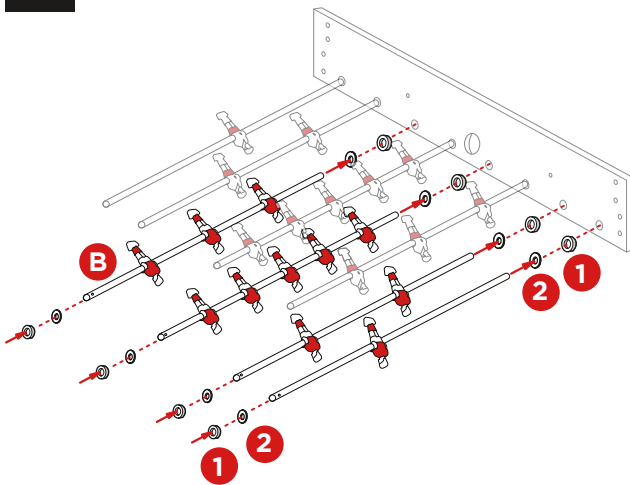
Please retain these instructions for future reference.

1



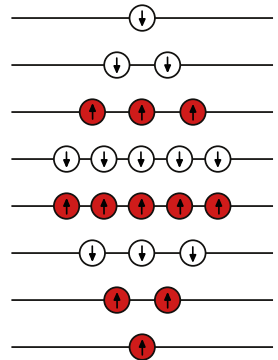
Position a part C side panel upside down with the ball entry hole closer to the floor. Insert four part A home player rods into the designated slots. Make sure that the ends with a hole are arranged on the same side.

2



Insert four part B away player rods into the designated slots. Make sure that the ends with a hole are arranged on the same side.

3

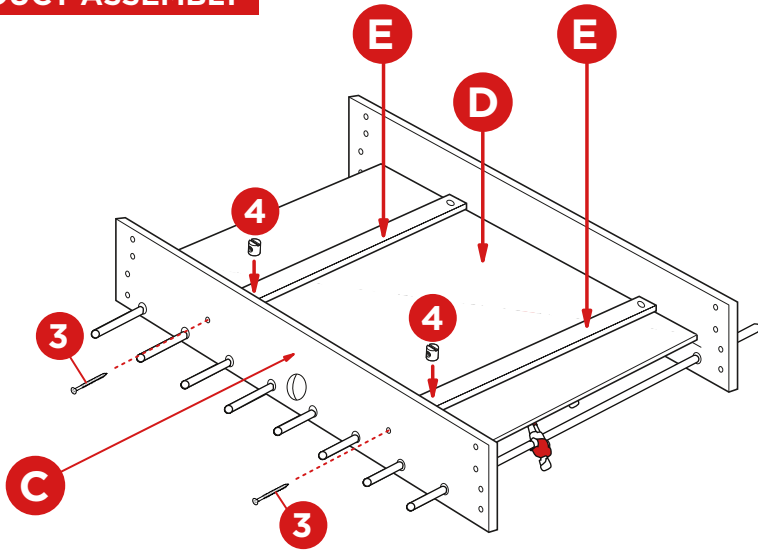


Confirm that the rods are arranged correctly and the players on the same team face the same direction.

NOTE: in this diagram both the figures and table are upside down.

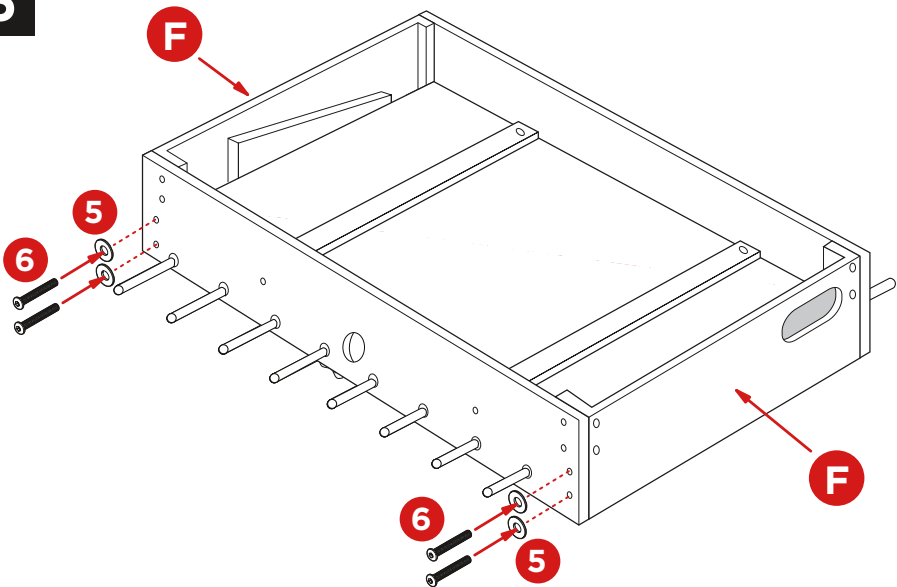
PRODUCT ASSEMBLY

4



Slide the other part C side panel onto the rods. Flip the part D playfield upside down and place it into the designated slots on the side panels. To secure the playfield, attach the two part E support braces with two part 3 screws and two part 4 nuts on each side.

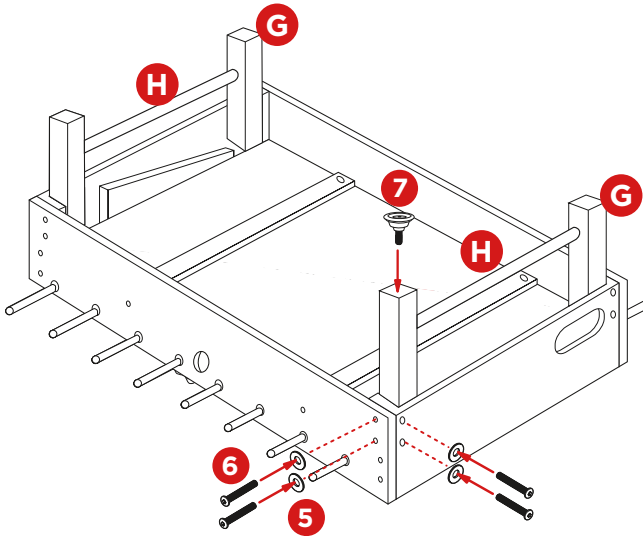
5



Slide on the two part F end panels to form the table frame. Secure the table frame with two part 6 bolts and two part 5 washers on each corner.

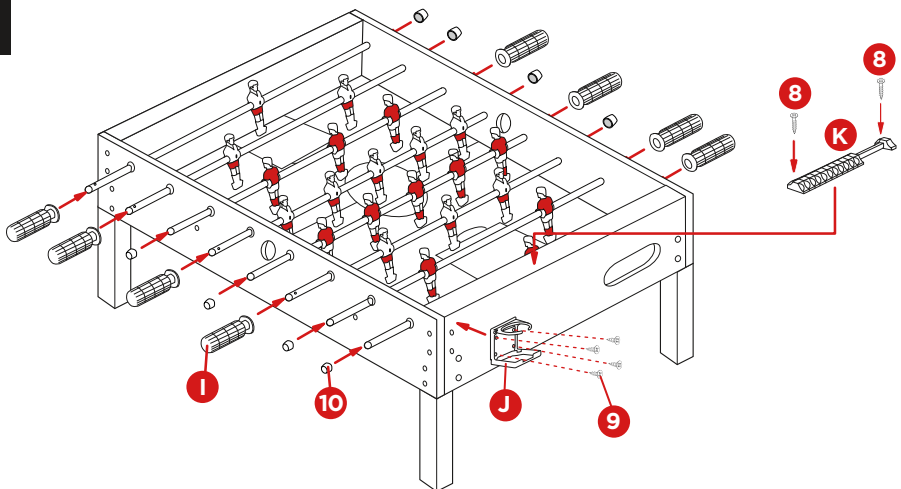
PRODUCT ASSEMBLY

6



Position the four part G legs on the corners of the table. Place a part H support bar between each set of legs. Secure the legs to the table with four part 6 bolts and four part 5 washers on each corner. Screw on the four part 7 feet, one on each leg.

7



Carefully flip the table over with the help of another person. Do not lift the table while holding onto the rods. Attach a part K scorer with two part 8 screws. Repeat on the other side.

Attach a part J cup holder with four part 9 screws. Repeat on the other side.

Slide eight part I handles onto the ends of rods with a hole. Slide eight part 10 end caps onto the ends of rods without a hole. Repeat on the other side. Note: a drop of liquid soap will help the handles slide on more easily.

NOTICE



- Do not stand on or use any part of this set as a step ladder.
- Firmly secure all bolts, screws and knobs before use.
- Reconfirm that all bolts, screws, and knobs are secure every 90 days.
- Be aware that some parts are heavy and have sharp edges.
- Do not use or store this item in the proximity of open flame or flammable/combustible chemicals.
- If any parts are missing, broken, damaged, or worn, stop using this product until repairs are made and/or factory replacement parts are installed.
- Do not use this item in a way inconsistent with the manufacturer's instructions as this could void the product warranty.

PRODUCT WARRANTY INFORMATION

All items can be returned for any reason within 60 days of the receipt and will receive a full refund as long as the item is returned in its original product packaging and all accessories from its original shipment are included. All returned items will receive a full refund back to the original payment method. All returned items will not be charged a re-stocking fee.

All returned items require an RA (Return Authorization) number, which can only be provided by a Best Choice Products Customer Service Representative when the return request is submitted. Items received without an RA may not be accepted or may increase your return processing time. Once an item has been received by Best Choice Products, refunds or replacements will be processed within 5 business days.

All returns must be shipped back to the Best Choice Products Return Center at the customer's expense. If the reason for return is a result of an error by Best Choice Products then Best Choice Products will provide a pre-paid shipping label via email. Boxes for return shipping will not be provided by Best Choice Products, and is the customer's responsibility to either use the original shipping boxes or purchase new boxes.

Pictures may be required for some returns to ensure an item is not damaged prior to its return. Items returned are not considered undamaged until they are received by Best Choice Products and verified as such. All damages to items are the customer's responsibility until the item has been received by and acknowledge by Best Choice Products as undamaged.

CONTACT US, WE'RE HERE 7 DAYS A WEEK TO HELP YOU!



[bestchoiceproducts.com](https://www.bestchoiceproducts.com)



customerservice@bestchoiceproducts.com



844.948.8400



[LEARN MORE!](#)

WARNING

Manufacturer and seller expressly disclaim any and all liability for personal injury, property damage or loss, whether direct, indirect, or incidental, resulting from the incorrect attachment, improper use, inadequate maintenance, or neglect of this product.