

Series LF622F/FT/UF/UFT

Lead Free* Bronze, Full Port Ball Valves

Size: 1/2" - 2" (15mm - 50mm)



Series LF622UF



Series LF622FT

Features

- The FEBCO Series LF622FT/LF622UFT available with tapped side outlet suitable for installation of pressure gauges or test cocks. LF622UF/UFT with Union Ends.
- Lead Free* construction to comply with Lead Free* installation requirements.
- Tee handle standard on 1/2" through 1 1/4" sizes (15mm – 32mm).
- Lever handle standard on 1 1/2" through 2" sizes (40mm – 50mm).
- Full port design for low pressure drop.
- Pressure rated at 600psi (41.4 bar) WOG, (non-shock) 1/2"-2" (15mm – 50mm) (DN15-DN50) and 125psi (8.6 bar) saturated steam.
- Suitable for temperature from 0°F to +350°F (-18°C to 177°C) at 50psi (345 kPa).
- PTFE stem packing seal, thrust washer and seat.
- Plated carbon steel handle with vinyl insulator.
- Quarter-turn open or close operation.
- Ideal for throttling and balancing applications of non-abrasive fluids where minimum flow is 20% to 100% of valve capacity.
- Low operating torque.
- Adjustable stem packing gland.
- Bottom loaded, pressure retaining stem.

LEAD FREE*

Options

LF622F: Full Port Thread x Thread Ball Valve

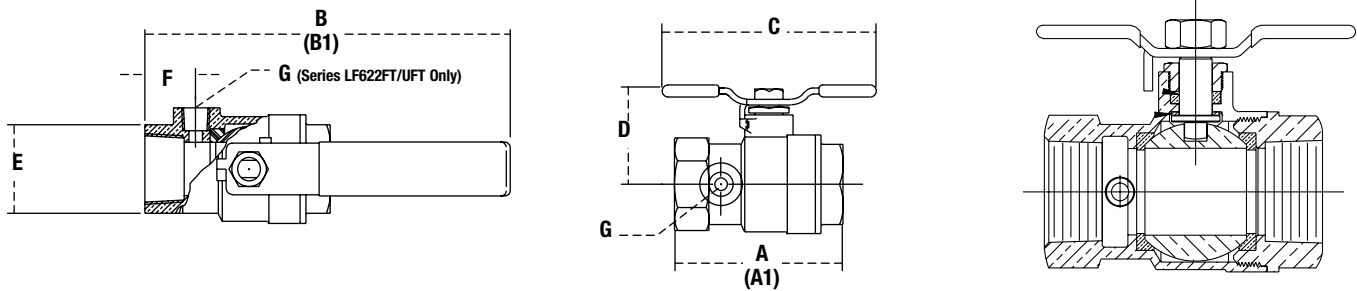
LF622FT: Full Port Thread x Thread Ball Valve with Tapped Side Outlet

LF622 UF: Full Port Thread x Thread Ball Valve with (1) Union End

LF622 UFT: Full port Thread x Thread Ball Valve with (1) Union End with Tapped Side Outlet

*The wetted surface of this product contacted by consumable water contains less than 0.25% of lead by weight.

Dimensions – Weights



LF622FT/LF622UFT

SIZE		DIMENSIONS										WEIGHT										
	A		A1 (union)		B		B1 (union)		C		D		E		F		G		LF622FT		LF622UFT	
<i>in.</i>	<i>in.</i>	<i>mm</i>	<i>in.</i>	<i>mm</i>	<i>in.</i>	<i>mm</i>	<i>in.</i>	<i>mm</i>	<i>in.</i>	<i>mm</i>	<i>in.</i>	<i>mm</i>	<i>in.</i>	<i>mm</i>	<i>in.</i>	<i>mm</i>	<i>in.</i>	<i>mm</i>	<i>lbs.</i>	<i>kgs.</i>	<i>lbs.</i>	<i>kgs.</i>
1/2	2 3/8	61	3 1/2	79			3 1/8	79	1 7/16	36	1	25	5/8	16	1/8 - 27	n/a	.6	.3	.7	.3		
3/4	2 5/8	67	3 1/2	89			3 3/8	79	1 5/8	41	1 1/4	32	3/4	19	1/8 - 27	n/a	.8	.4	1.1	.5		
1	3 1/8	79	4	102			3 9/16	91	2	51	1 1/2	38	13/16	20	1/8 - 27	n/a	1.3	.6	1.6	.7		
1 1/4	3 5/8	92	4 9/16	116			3 9/16	91	2 1/16	53	1 13/16	46	13/16	21	1/4 - 18	n/a	2.3	1.0	2.4	1.1		
1 1/2	3 7/8	99	5	129	8 1/2	216	9 1/2	241			3	76	2 3/16	55	13/16	21	1/4 - 18	n/a	3.2	1.4	3.7	1.7
2	4 7/16	113	5 11/16	144	8 1/2	216	9 5/8	244			3 1/2	89	2 3/4	70	13/16	21	1/4 - 18	n/a	5.6	2.5	6.4	2.9

LF622F/LF622UF

SIZE		DIMENSIONS							WEIGHT									
	A		A1		B		B1		C		D		E		LF622FT		LF622UFT	
<i>in.</i>	<i>in.</i>	<i>mm</i>	<i>in.</i>	<i>mm</i>	<i>in.</i>	<i>mm</i>	<i>in.</i>	<i>mm</i>	<i>in.</i>	<i>mm</i>	<i>in.</i>	<i>mm</i>	<i>in.</i>	<i>mm</i>	<i>lbs.</i>	<i>kgs.</i>	<i>lbs.</i>	<i>kgs.</i>
1/2	2 3/16	55	3	74			3 3/8	79	1 7/16	36	1	25	.6	.3	.7	.3		
3/4	2 5/8	61	3 1/4	82			3 3/8	79	1 5/8	41	1 1/4	32	.7	.3	1.0	.5		
1	2 7/8	73	3 3/4	96			3 9/16	91	2	51	1 1/2	38	1.3	.6	1.6	.7		
1 1/4	3 1/4	83	4 3/16	107			3 9/16	91	2 1/16	53	1 13/16	46	2.0	.9	2.4	1.1		
1 1/2	3 5/8	92	4 3/4	120	8	206	9	231			3	76	2 3/16	55	3.1	1.4	3.6	1.7
2	4 3/16	106	5 3/8	137	8 3/8	213	9 11/16	246			3 1/2	89	2 3/4	70	5.3	2.4	6.3	2.9

Dimensions shown are nominal.

NOTICE

Inquire with governing authorities for local installation requirements.