

Commercial solutions

CROUSE-HINDS
SERIES

Extra duty While-in-use covers & kits



Tough. Versatile. Weatherproof.

EATON

Powering Business Worldwide



Extra duty while-in-use covers

Tough. Versatile. Weatherproof.

Eaton's Crouse-Hinds series line of weatherproof while-in-use covers combine durable weather protection with innovative design features to offer a superior weatherproof solution.

While-in-use covers are available in various sizes and styles of die cast aluminum and UV rated polycarbonate with configurable device inserts for maximum application flexibility.

All Eaton's Crouse-Hinds series while-in-use covers are NEMA 3R rated and meet the latest NEC requirements for Wet Locations and extra-duty applications.



Design features



Multiple configurations:

- Patented ball joint hinge allows for vertical or horizontal mounting without disassembly
- Up to 55 different device configurations for ultimate flexibility

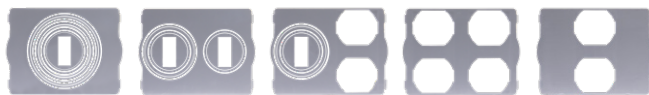


16:1 single gang configurations



1-1/4" – 2-1/8"

55:1 double gang configurations



1-1/4" – 2-1/2"

1-1/4" – 1-3/4"

1-1/4" – 1-3/4"

Available colors



Gray

Transparent gray

Bronze

White



Slim line cover:

- Low profile design adaptable for duplex or GFCI receptacles
- Eliminate cord bending inside the cover
- Horizontal and vertical designs for maximum mounting adaptability

Complete kits available:

- Save time with fast and easy installation
- Available with non-metallic or metallic while in use covers
- In-wall or external mount versions available



External mount kit

Extra duty non-metallic while-in-use covers

Applications:

Designed to provide weatherproof protection while an outlet is in use

Key features & benefits:

- Corrosion-resistant, non-conductive
- UV-rated polycarbonate for long outdoor life
- Corner ball joint hinge for true universal mounting capability
- No disassembly required for vertical or horizontal mounting orientation
- Adapters for decorator and GFCI devices, duplex receptacles, switches and round receptacles
- Keyhole provision for easy mounting
- Pre-installed gasket, mounting hardware and installation instructions included
- Easy to close lockable cover



Certifications:

- cULus – File Nos. E102328 & E15022
- cCSAus
- Complies with NEC Article 406.9(B)(1)
- NEMA 3R



Materials:

Body and cover:

- Polycarbonate

Gaskets:

- Polyethylene foam



16:1 single gang configurations



1-1/4" – 2-1/8"

55:1 double gang configurations

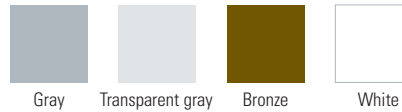


1-1/4" – 2-1/2"

1-1/4" – 1-3/4"

1-1/4" – 1-3/4"

Available colors



Model	Gangs	Description	Mounting orientation	Color	Depth	Unit Qty.	Wt. lbs per 100
WIU1T1	1	Extra duty, 16:1	Horizontal/vertical	Transparent gray	2.25"	6	31.7
WIU1G1	1	Extra duty, 16:1	Horizontal/vertical	Gray	2.25"	6	31.7
WIU1W1	1	Extra duty, 16:1	Horizontal/vertical	White	2.25"	6	31.7
WIU1B1	1	Extra duty, 16:1	Horizontal/vertical	Bronze	2.25"	6	31.7
WIU1DT1	1	Extra duty, 16:1	Horizontal/vertical	Transparent gray	3.125"	5	36.1
WIU1DG1	1	Extra duty, 16:1	Horizontal/vertical	Gray	3.125"	5	36.1
WIU1DW1	1	Extra duty, 16:1	Horizontal/vertical	White	3.125"	5	36.1
WIU1DB1	1	Extra duty, 16:1	Horizontal/vertical	Bronze	3.125"	5	36.1
WIU2DT1	2	Extra duty, 55:1	Vertical	Transparent gray	3.125"	3	47.8
WIU2DG1	2	Extra duty, 55:1	Vertical	Gray	3.125"	3	47.8
WIU2DW1	2	Extra duty, 55:1	Vertical	White	3.125"	3	47.8
WIU2DB1	2	Extra duty, 55:1	Vertical	Bronze	3.125"	3	47.8



Extra duty metallic while-in-use covers

Applications:

Designed to provide weatherproof protection while an outlet is in use

Key features & benefits:

- Durable die cast, powder coated aluminum construction
- Corner ball joint hinge for true universal mounting capability
- No disassembly required for vertical or horizontal mounting orientation
- Adapters for decorator and GFCI devices, duplex receptacles, switches and round receptacles
- Keyhole provision for easy mounting
- Pre-installed gasket, mounting hardware and installation instructions included
- Easy to close lockable cover



Certifications:

- cULus – File Nos. E102328 & E15022
- cCSAus
- Complies with NEC Article 406.9(B)(1)
- NEMA 3R



Materials:

Body and cover:

- Die cast aluminum

Gaskets:

- Polyethylene foam

16:1 single gang configurations



1-1/4" – 2-1/8"

55:1 double gang configurations

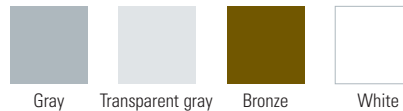


1-1/4" – 2-1/2"

1-1/4" – 1-3/4"

1-1/4" – 1-3/4"

Available colors



Model	Gangs	Description	Mounting orientation	Color	Depth	Unit Qty.	Wt. lbs per 100
WIUM1G1	1	Extra duty, 16:1	Horizontal/vertical	Gray	2.25"	6	60.0
WIUM1W1	1	Extra duty, 16:1	Horizontal/vertical	White	2.25"	6	60.0
WIUM1B1	1	Extra duty, 16:1	Horizontal/vertical	Bronze	2.25"	6	60.0
WIUM1DG1	1	Extra duty, 16:1	Horizontal/vertical	Gray	3.125"	5	70.5
WIUM1DW1	1	Extra duty, 16:1	Horizontal/vertical	White	3.125"	5	70.5
WIUM1DB1	1	Extra duty, 16:1	Horizontal/vertical	Bronze	3.125"	5	70.5
WIUM2DG1	2	Extra duty, 55:1	Vertical	Gray	3.125"	3	84.6
WIUM2DW1	2	Extra duty, 55:1	Vertical	White	3.125"	3	84.6
WIUM2DB1	2	Extra duty, 55:1	Vertical	Bronze	3.125"	3	84.6



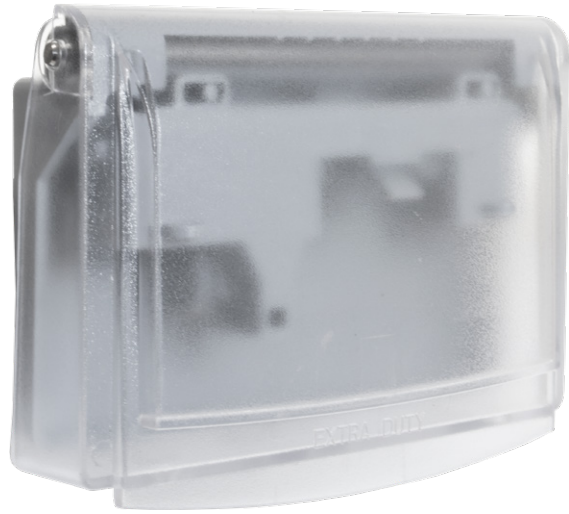
Extra duty low profile while-in-use covers

Applications:

Low profile design that provides weatherproof protection while an outlet is in use and the cover is closed

Key features & benefits:

- Corrosion-resistant, non-conductive
- UV-rated polycarbonate for long outdoor life
- Horizontal and vertical mounting options
- No cord bending inside the cover
- Adapters for duplex and GFCI receptacles included
- Rated for 15A
- Easy to close lockable cover
- Pre-installed gasket, mounting hardware and installation instructions included



Certifications:

- cCSAus
- Complies with NEC Article 406.9(B)(1)
- NEMA 3R



Materials:

Body and cover:

- Polycarbonate

Gaskets:

- Polyethylene foam

Available colors



Gray Transparent gray White



Model	Gangs	Description	Mounting orientation	Color	Depth	Unit Qty.	Wt. lbs per 100
WIUS1VT1	1	Extra duty, low profile	Vertical	Transparent gray	1.562"	6	45.2
WIUS1VG1	1	Extra duty, low profile	Vertical	Gray	1.562"	6	45.2
WIUS1VW1	1	Extra duty, low profile	Vertical	White	1.562"	6	45.2
WIUS1HT1	1	Extra duty, low profile	Horizontal	Transparent gray	1.562"	5	58.2
WIUS1HG1	1	Extra duty, low profile	Horizontal	Gray	1.562"	5	58.2
WIUS1HW1	1	Extra duty, low profile	Horizontal	White	1.562"	5	58.2

Extra duty while-in-use kits

Applications:

While-in-use cover kits are used to provide weatherproof protection for included devices

Key features & benefits:

- Kits include single-gang outlet box, in-use cover and 15A TRWR GFCI device
- Corner ball joint hinge for true universal mounting capability
- Includes pre-installed gasket, mounting hardware and closure plugs
- Easy to close lockable cover

Certifications:

- cULus – File Nos. E324733
- cCSAus
- Complies with NEC Article 406.9(B)(1)
- NEMA 3R



Materials:

Outlet boxes:

- Die cast aluminum

Metallic covers:

- Die cast aluminum

Non-metallic covers:

- Polycarbonate

Gaskets:

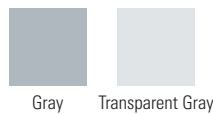
- Polyethylene foam



Non-Metallic transparent and gray covers

Metallic gray cover

Available colors



Gray

Transparent Gray

16:1 single gang configurations



1-1/4" – 2-1/8"

Non-metallic in-use covers

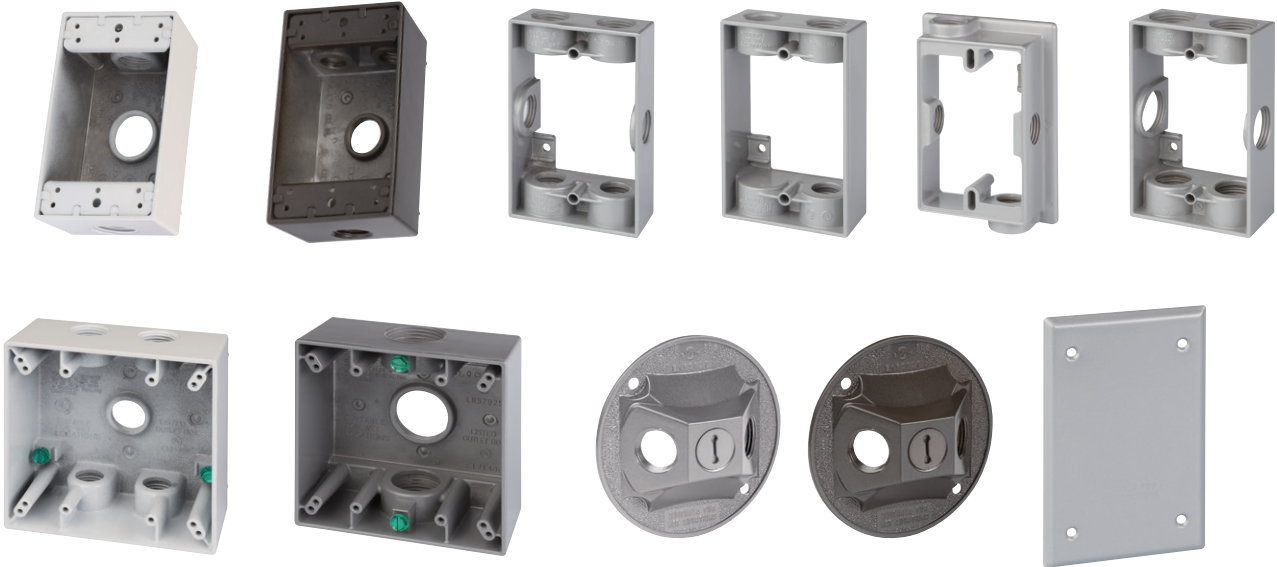
Model	Description	Mounting orientation	Color	Outlet holes	Box depth	Unit Qty.	Wt. lbs per 100
WIUKGFC1	Single-gang box and in-use cover, 15A TRWR GFCI receptacle	Horizontal/vertical	Transparent gray	3 - 1/2"	3 - 1/8"	4	108.9
WIUKGFG1	Single-gang box and in-use cover, 15A TRWR GFCI receptacle	Horizontal/vertical	Gray	3 - 1/2"	3 - 1/8"	4	108.9

Metallic in-use covers

Model	Description	Mounting orientation	Color	Outlet holes	Box depth	Unit Qty.	Wt. lbs per 100
WIUKMGFG1	Single-gang box and in-use cover, 15A TRWR GFCI receptacle	Horizontal/vertical	Gray	3 - 1/2"	3 - 1/8"	4	140.2

Visit Eaton.com to preview the expanded weatherproof line with over 120 new items!

Outlet boxes, extension rings and covers



Complete device kits



LED and traditional lighting kits, motion sensors and accessories



**U.S. (global headquarters):
Eaton's Crouse-Hinds Division**

1201 Wolf Street
Syracuse, NY 13208

(866) 764-5454
FAX: (315) 477-5179
FAX Orders Only:
(866) 653-0640

crousecustomerctr@eaton.com

For more information:

If further assistance is required, please contact an authorized Eaton Distributor, Sales Office, or Customer Service Department.

Canada

Toll Free: 800-265-0502
FAX: (800) 263-9504
FAX Orders only: (866) 653-0645

Mexico/Latin America/Caribbean

52-555-804-4000
FAX: 52-555-804-4020
ventascentromex@eaton.com

Europe (Germany)

49 (0) 6271 806-500
49 (0) 6271 806-476
info-ex@eaton.com

Middle East

971 4 8066100
FAX: 971 4 8894813
chmesales@eaton.com

Singapore

65-6645-9888
FAX: 65-6297-4819
chsi-sales@eaton.com

China

86-21-2899-3600
FAX: 86-21-2899-4055
echsales@eaton.com

Korea

82 2 6380 4032
82-2-6380-4070
ECHKsales@eaton.com

Australia

1300-332-866
FAX: 61-2-9693-5127
crousehindsanz@eaton.com

India

91-124-4683888
FAX: 91-124-4683899
cchindia@eaton.com

Eaton
1000 Eaton Boulevard
Cleveland, OH 44122
United States
Eaton.com

© 2022 Eaton
All Rights Reserved
Printed in USA
Publication No. 5463-0522
May 2022

Eaton is a registered trademark.

All other trademarks are property of their respective owners.