

# BARCO

FALL  
2025

July 2025 - November 2025





# BARCO BRANDS



4-way Stretch



Moisture Wicking



Wrinkle Release



Recycled Polyester Blend



Extreme Comfort



4-way Stretch



Moisture Wicking



Wrinkle Release



Extreme Comfort



4-way Stretch



Moisture Wicking



6 Recycled Bottles Per Garment



Anti Static



Quick Shed



Extreme Comfort



360° Spandex Stretch



Moisture Wicking



Anti-Odor Protection



Spandex Stretch



Soil Release



Wrinkle Release



Soft Touch



360° Spandex Stretch



Moisture Wicking



Wrinkle Release



Recycled Polyester Blend



Natural Stretch



Soil Release



Soft Touch



Durable Design



360° Spandex Stretch



Moisture Wicking



5 Recycled Bottles Per Garment



Soft Touch



360° Spandex Stretch



Moisture Wicking



5 Recycled Bottles Per Garment



Anti Static



Quick Shed



360° Spandex Stretch



Soft Touch



Wrinkle Release



Durable Design



# TABLE OF CONTENTS

## 04 SKECHERS™ COLLECTION

### 04 **NEW** SKECHERS™ BY BARCO™ COLLECTION

### 10 SKECHERS SLIP-INS™ BY BARCO

### 16 SKECHERS™ BY BARCO™

## 26 GREY'S ANATOMY PROFESSIONAL WEAR BY BARCO

### 26 KNIT STRETCH

### 32 SPANDEX STRETCH

### 40 EVOLVE STRETCH

### 46 CLASSIC

## 52 BARCO® ONE COLLECTION

### 52 PERFORMANCE KNIT

### 56 BARCO® ONE

## 62 BARCO® UNIFY

## 66 LAB COATS

**ON  
THE  
COVER**

**NEW SKECHERS™ BY BARCO™ COLLECTION**

**WOMEN'S: SKT276 CHARLIE TOP / SKP707 SCOUT PANT**

**MEN'S: SKT277 STATION TOP / SKP708 TERRAIN PANT**





# New COLLECTION SHOWN IN

2544 Field Green

**NEW** SKT276 CHARLIE TOP

**NEW** SKP707 SCOUT PANT

## FABRIC DETAIL



**SKECHERS**  
by Barco™

THE COMFORT TECHNOLOGY COMPANY™

**NEW**  
COLLECTION



## PRIMARY FABRIC CONTENT

52% Polyester

39% Recycled Polyester

9% Spandex



**NEW SKT284**  
**Trek Top**



**NEW SKP712**  
**Explore Pant**



**NEW SKP707**  
**Scout Pant**



**NEW SKT276**  
**Charlie Top**





# New COLLECTION SHOWN IN

18 Pewter

**NEW** SKT277 STATION TOP

**NEW** SKP708 TERRAIN PANT



## FABRIC DETAIL



**SKECHERS**  
by Barco™

THE COMFORT TECHNOLOGY COMPANY™

**NEW**  
COLLECTION

## PRIMARY FABRIC CONTENT

52% Polyester

39% Recycled Polyester

9% Spandex

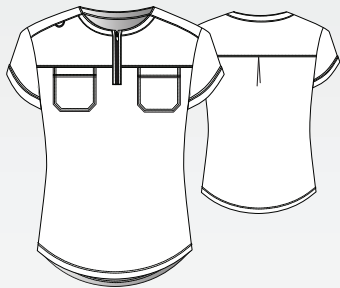






NEW SKT284 Trek Top

Women's 2-pocket rounded zip-neck double chest pocket tuck-in top  
Sizes: XXS - 3XL, CB:25"  
Color shown: 2544 Field Green



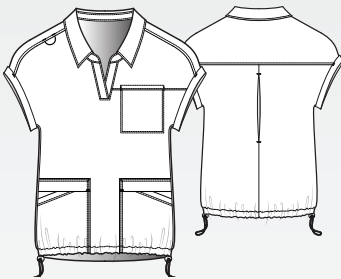
01 Black	7/1
18 Pewter	7/1
41 Navy	7/1

Seasonal Colors:

2544 Field Green	7/1
2542 Duffle	8/1

NEW SKT276 Charlie Top

Women's 3-pocket V-neck with shirt collar, right shoulder badge loop, on-seam chest pocket, waist patch pockets, cuffed dolman sleeves, adjustable hem relaxed-fit top  
Sizes: XXS - 3XL, CB:25.5"  
Color shown: 18 Pewter



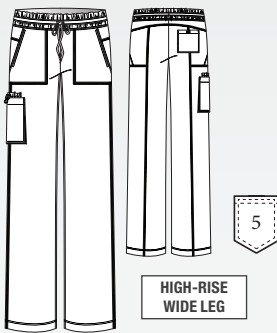
01 Black	7/1
18 Pewter	7/1
41 Navy	7/1

Seasonal Color:

2544 Field Green	7/1
------------------	-----

NEW SKP707 Scout Pant

Women's 5-pocket shirred elastic waistband with tunneled drawcord, high-rise, on-seam slanted front pockets, bellows cargo pocket with adjustable inside pocket, patch back pocket wide leg pant  
Sizes: XXS-3XL, I: 31"  
XXSP-XLP, I: 29"  
Leg opening: 9.5"  
Color shown: 18 Pewter



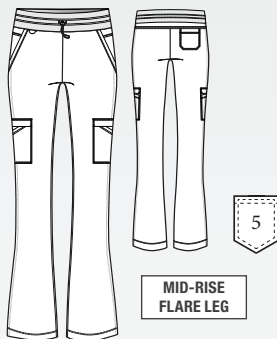
01 Black	7/1
18 Pewter	7/1
41 Navy	7/1

Seasonal Color:

2544 Field Green	7/1
------------------	-----

NEW SKP712 Explore Pant

Women's 5-pocket jersey knit waistband mid-rise fit & flare pant  
Sizes: XXS-3XL, I: 31.5"  
XXSP-XLP, I: 29.5"  
Leg opening: 9.5"  
Color shown: 2544 Field Green



01 Black	7/1
18 Pewter	7/1
41 Navy	7/1

Seasonal Colors:

2544 Field Green	7/1
2542 Duffle	8/1

\*2542 Duffle is not available in Petite sizes

All Styles Main Fabric

52% Polyester / 39% Recycled Polyester / 9% Spandex

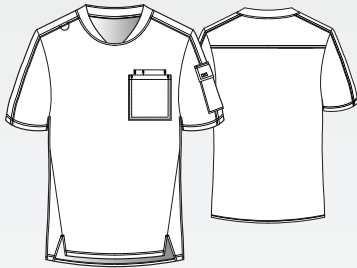


**NEW SKT277 Station Top**

Men's 3-pocket rounded neck, right shoulder badge loop, double chest pocket with pen slot, bellows sleeve pocket with flap, notched high-low hem top

Sizes: XS - 3XL, CB:29"

Color shown: 18 Pewter



01 Black	7/1
18 Pewter	7/1
41 Navy	7/1

**Seasonal Colors:**

2544 Field Green	7/1
2542 Duffle	8/1

**NEW SKP708 Terrain Pant**

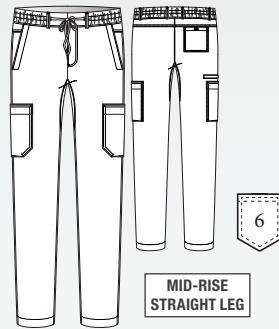
Men's 6-pocket encased elastic waistband with snap closure, drawcord & beltloops, zip-fly, slanted front pockets, double cargo pocket, inner thigh gusset, back patch pocket slim straight pant

Sizes: XS-3XL, I: 32"

SS-XLS, I: 30"

Leg opening: 7.5"

Color shown: 18 Pewter



01 Black	7/1
18 Pewter	7/1
41 Navy	7/1

**Seasonal Colors:**

2544 Field Green	7/1
2542 Duffle	8/1

**All Styles Main Fabric**

52% Polyester / 39% Recycled Polyester / 9% Spandex





# New FALL Color

**512 Brilliance**

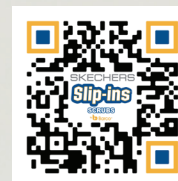
**NEW SKT274 ATLAS TOP**  
**SKP668 REACH PANT**

*\*Style and color available 9/1*



SKECHERS  
**Slip-ins**  
SCRUBS  
by Barco™

**SCAN FOR DETAILS**



**KNIT COLLECTION**  
**PRIMARY FABRIC CONTENT**

86% Nylon

14% Spandex

**SKT221**  
**Flow Top**



**SKP668**  
**Reach Pant**



**SKP669**  
**Pace Jogger**



**NEW SKT274**  
**Atlas Top**





**NEW SKT274 Atlas Top**  
Mock neck with zipper long sleeve top  
Sizes: XXS - 5XL, CB:23"  
Color shown: 512 Brilliance



01 Black	9/1
18 Pewter	9/1
41 Navy	9/1

Seasonal Color:	
512 Brilliance	9/1

**SKT220 Serene Top**  
3-pocket sweetheart V-neck, front princess seams with on-seam zipper pocket, angled top-entry patch waist pockets, shoulder Steel badge loop, shirt tail hem top  
Sizes: XXS - 5XL, CB:25.5"  
Color shown: 08 New Royal



01 Black	
08 New Royal	
18 Pewter	
40 Ciel	
41 Navy	
65 Wine	
328 Bahama	

Seasonal Color:	
512 Brilliance	9/1

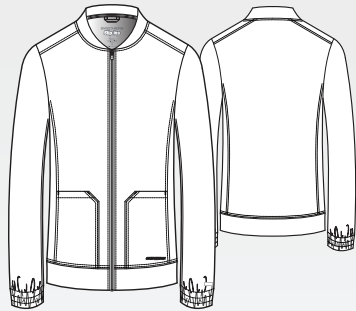
**SKT221 Flow Top**  
1-pocket banded curved V-neck, chest patch pocket, front and back princess seams, shoulder Steel badge loop, tulip hem top  
Sizes: XXS - 5XL, CB:25.5"  
Color shown: 65 Wine



01 Black	
08 New Royal	
18 Pewter	
40 Ciel	
41 Navy	
65 Wine	
328 Bahama	

Seasonal Color:	
512 Brilliance	9/1

**SKW919 Contour Warm-Up**  
Women's 3-pocket banded collar, top-entry waist pockets, inside left front pocket, self waistband, encased elastic cuffs, zip-front warm-up  
Sizes: XS - 5XL, CB:23"  
Color shown: 18 Pewter



01 Black	
08 New Royal	
18 Pewter	
40 Ciel	
41 Navy	
65 Wine	
328 Bahama	

**KNIT COLLECTION**  
All Styles Main Fabric  
86% Nylon/14% Spandex



### SKP656 Glide Pant

4-pocket flat waistband with drawcord and inside logo elastic, angled zipper front pockets, patch cargo pocket with pen slot, back patch pocket, fit & flare pant

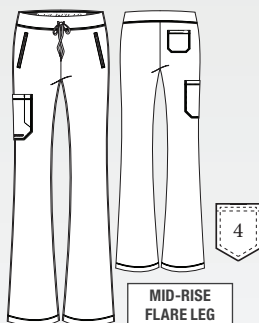
Sizes: XXS-5XL, I: 31.5"

XXSP-2XLP, I: 29.5"

XST-XLT, I: 33.5"

Leg opening: 9.375"

Color shown: 512 Brilliance



01 Black
08 New Royal
18 Pewter
40 Ciel
41 Navy
65 Wine
328 Bahama

Seasonal Color:

512 Brilliance	9/1
----------------	-----

### SKP669 Pace Jogger

5-pocket encased elastic waistband with drawcord, on-seam zipper front pockets with shadow top stitching, patch cargo pocket with pen slot, ribbed cuff jogger

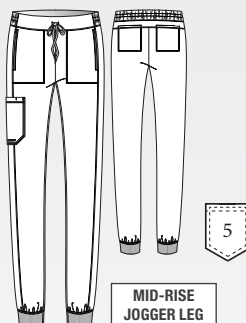
Sizes: XXS-5XL, I: 29"

XXSP-2XLP, I: 27"

XST-XLT, I: 31"

Leg opening: 4.25"

Color shown: 41 Navy



01 Black
08 New Royal
18 Pewter
40 Ciel
41 Navy
65 Wine
328 Bahama

Seasonal Color:

512 Brilliance	9/1
----------------	-----

### SKP668 Reach Pant

4-pocket shirred elastic waistband with tunneled drawcord, slanted front pockets with shadow top stitching, welt cargo and welt back pocket, slim straight pant

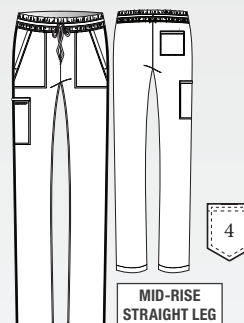
Sizes: XXS-5XL, I: 31"

XXSP-2XLP, I: 29"

XST-XLT, I: 33.5"

Leg opening: 7.75"

Color shown: 40 Ciel



01 Black
08 New Royal
18 Pewter
40 Ciel
41 Navy
65 Wine
328 Bahama

Seasonal Color:

512 Brilliance	9/1
----------------	-----

### KNIT COLLECTION

All Styles Main Fabric

86% Nylon/ 14% Spandex





**NEW SKT280 Propel Top**  
1-pocket mock neck with zipper, left sleeve zipper pocket, back yoke long sleeve top  
*Sizes: XS - 5XL, CB:29"*  
*Color shown: 18 Pewter*



01 Black	9/1
18 Pewter	9/1
41 Navy	9/1

SCAN FOR DETAILS



**KNIT COLLECTION**  
All Styles Main Fabric  
86% Nylon/14% Spandex

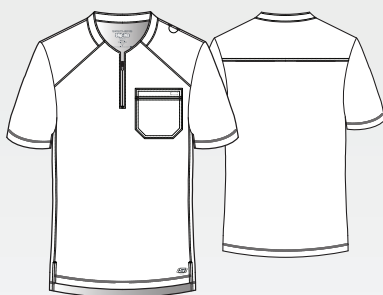


### SKT229 Flex Top

1-pocket curved banded neck with front zipper, chest patch pocket, shoulder badge loop, straight high-low hem top

Sizes: XS - 5XL, CB:29"

Color shown: 08 New Royal



01 Black

08 New Royal

18 Pewter

40 Ciel

41 Navy

65 Wine

328 Bahama

Seasonal Color:

512 Brilliance

9/1

### SKP659 Rebound Pant

4-pocket flat waistband with drawcord and inside logo elastic, slanted front pockets, patch cargo pocket, back patch pocket with velcro closure, slim straight pant

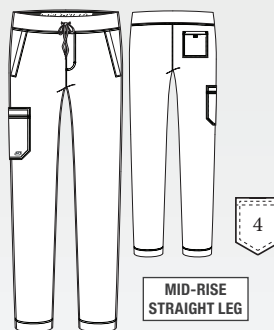
Sizes: XS-5XL, I: 32"

XSS-XLS, I: 30"

ST-XLT, I: 34"

Leg opening: 7.25"

Color shown: 41 Navy



01 Black

08 New Royal

18 Pewter

40 Ciel

41 Navy

65 Wine

328 Bahama

Seasonal Color:

512 Brilliance

9/1

**KNIT COLLECTION**

**All Styles Main Fabric**

86% Nylon/ 14% Spandex





# New FALL Color

**2535 Bright Marigold**

**SKT259 COAST TOP**  
**SKP552 THEORY JOGGER**



**SKECHERS**  
by Barco™

THE COMFORT TECHNOLOGY COMPANY™

#### PRIMARY FABRIC CONTENT

54% Polyester

40% Recycled Polyester

6% Spandex

**SKT259**  
**Coast Top**



**SKP552**  
**Theory Jogger**



**SK201**  
**Reliance Pant**



**SK101**  
**Breeze Top**





**BOK803 SURGE UNDERSCRUB**

**NEW SKP718 COMPASS PANT**

*WITH ZIP-FLY*



THE COMFORT TECHNOLOGY COMPANY™

**SCAN FOR DETAILS**



**PRIMARY FABRIC CONTENT**

54% Polyester

40% Recycled Polyester

6% Spandex





**NEW**  
**SKP718**  
**Compass**  
**Pant**



**SKT193**  
**Thesis**  
**Top**



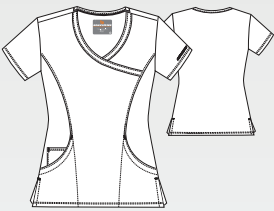
**NEW**  
**SKP718**  
**Compass**  
**Pant**



**SKT193**  
**Thesis**  
**Top**



**SK102 Reliance Top**  
3-pocket, V-neck surplice with front princess seams, side vent detail, contrast back neck binding  
Sizes: XXS - 5XL, CB: 25.5"  
Color shown: 1277 Eggplant



01 Black	
08 New Royal	
10 White	
18 Pewter	
37 Hunter	
39 Teal	
40 Ciel	
41 Navy	
65 Wine	
230 Khaki	
328 Bahama	
503 Galaxy	
1276 New Grape	
1277 Eggplant	
1295 True Red	

**SKT259 Coast Top**  
2-pocket, banded collar with V-placket, badge loop, front and back princess seams, welt waist pockets, straight hem  
Sizes: XXS - 5XL, CB: 25.5"  
Color shown: 2535 Bright Marigold



01 Black	G
08 New Royal	G
10 White	7/1 G
18 Pewter	G
40 Ciel	7/1 G
41 Navy	G
65 Wine	7/1 G
328 Bahama	7/1 G

Seasonal Color:  
2535 Bright Marigold 7/1

**SKT147 Dignity Tuck-In Top**  
1-pocket, V-neck with contrast rib, front yoke seam with badge loop, single chest pocket, high-low hem tuck-in top  
Sizes: XXS - 5XL, CB: 26"  
Color shown: 41 Navy



01 Black	G
08 New Royal	G
10 White	G
18 Pewter	G
37 Hunter	G
39 Teal	G
40 Ciel	G
41 Navy	G
65 Wine	G
328 Bahama	G
471 Moonstruck	G
503 Galaxy	G
1277 Eggplant	G
2301 Vibrance Pink	

Seasonal Color:  
2535 Bright Marigold 7/1

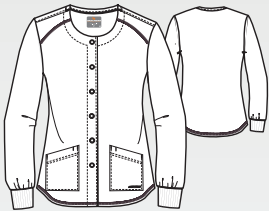
**SK101 Breeze Top**  
3-pocket, virtual V-neck, shaped hem, detailed cover stitching, contrast back neck binding  
Sizes: XXS - 5XL, CB: 25.5"  
Color shown: 328 Bahama



01 Black	G
08 New Royal	G
10 White	G
18 Pewter	G
37 Hunter	G
39 Teal	G
40 Ciel	G
41 Navy	G
65 Wine	G
230 Khaki	G
328 Bahama	G
471 Moonstruck	G
503 Galaxy	G
1276 New Grape	G
1277 Eggplant	G
1295 True Red	G
2301 Vibrance Pink	

Seasonal Color:  
2535 Bright Marigold 7/1

**SK401 Stability Warm-Up**  
2-pocket, round neck, snap front closure, dyed-to-match seamless knit sock cuff sleeves, contrast back neck binding  
Sizes: XS - 5XL, CB: 27"  
Color shown: 417 Moonstruck



Seamless Cuff: 100% Polyester

01 Black	G
08 New Royal	G
10 White	G
18 Pewter	G
37 Hunter	G
39 Teal	G
40 Ciel	G
41 Navy	G
65 Wine	G
230 Khaki	G
328 Bahama	G
471 Moonstruck	G
503 Galaxy	G
1276 New Grape	G
1277 Eggplant	G
1295 True Red	G
2301 Vibrance Pink	

All Styles Main Fabric  
54% Polyester/40% Recycled Polyester/6% Spandex

G denotes colors supported for Groups



### SKP552 Theory Jogger

4-pocket, drawcord waistband  
mid-rise, with double cargo  
pocket and pen slot

Sizes: XXS - 5XL, I: 29"

XXSP - XLP, I: 27"

XST - XLT, I: 31"

Leg opening: 4.5"

Color shown: 2535 Bright Marigold

Knit Accents Content:

88% Polyester/12% Spandex



01 Black	G
08 New Royal	G
10 White	G
18 Pewter	G
37 Hunter	G
39 Teal	G
40 Ciel	G
41 Navy	G
65 Wine	G
230 Khaki	G
328 Bahama	G
471 Moonstruck	G
503 Galaxy	G
1276 New Grape	G
1277 Eggplant	G
1295 True Red	G
2301 Vibrance Pink	G

Seasonal Color:

2535 Bright Marigold 7/1

### SK201 Reliance Pant

3-pocket, flat front with tape  
tie, branded, inside logo plush  
elastic waistband, cargo pocket

Sizes: XXS - 5XL, I: 31.5"

XXSP - 2XLP, I: 29.5"

XXST - XLT, I: 33.5"

Leg opening: 8.5"

Color shown: 65 Wine



01 Black	G
08 New Royal	G
10 White	G
18 Pewter	G
37 Hunter	G
39 Teal	G
40 Ciel	G
41 Navy	G
65 Wine	G
230 Khaki	G
328 Bahama	G
471 Moonstruck	G
503 Galaxy	G
1276 New Grape	G
1277 Eggplant	G
1295 True Red	G
2301 Vibrance Pink	G

Seasonal Color:

2535 Bright Marigold 7/1

### SKP623 Gamma Pant

6-pocket, encased elastic  
waistband with drawcord, trouser  
front pockets, double cargo pocket,  
back patch pockets, forward leg  
seam, hem vent with logo tape,  
tapered leg pant

Sizes: XXS - 5XL, I: 30"

XXSP - XLP, I: 28"

XST - XLT, I: 32"

Leg opening: 7"

Color shown: 40 Ciel



01 Black	G
08 New Royal	G
10 White	G
18 Pewter	G
37 Hunter	G
39 Teal	G
40 Ciel	G
41 Navy	G
65 Wine	G
328 Bahama	G
1276 New Grape	G
1295 True Red	G
2301 Vibrance Pink	G

Seasonal Color:

2535 Bright Marigold 7/1

### SK202 Breeze Pant

3-pocket, logo plush elastic  
waistband, cargo pocket

Sizes: XXS - 5XL, I: 31.5"

XXSP - 2XLP, I: 29.5"

XXST - XLT, I: 33.5"

Leg opening: 7.75"

Color shown: 08 New Royal



01 Black	
08 New Royal	
10 White	
18 Pewter	
37 Hunter	
39 Teal	
40 Ciel	
41 Navy	
65 Wine	
328 Bahama	
503 Galaxy	
1276 New Grape	
1277 Eggplant	
1295 True Red	

All Styles Main Fabric

54% Polyester/40% Recycled Polyester/6% Spandex

G denotes colors supported for Groups





**NEW SKT021-MASD**  
**Marigold Shade**  
3-pocket, virtual V-neck,  
shaped hem, detailed cover  
stitching  
*Sizes: XS - 5XL, CB: 25.5"*

**Coordinating  
Pant Color:**  
**2535 Bright  
Marigold**



**NEW SKT021-PRPT**  
**Perr Pattern**  
3-pocket, virtual V-neck,  
shaped hem, detailed cover  
stitching  
*Sizes: XS - 5XL, CB: 25.5"*

**Coordinating  
Pant Colors:**  
**01 Black**  
**39 Teal**  
**40 Ciel**  
**65 Wine**  
**471 Moonstruck**



**petco love**  
A NONPROFIT CHANGING LIVES  
If you've ever shared your life with a pet, you know that love changes everything. Love is why we've teamed up with Petco Love to help create a better world for pets. When you purchase this product, a donation will be made to help save the lives of dogs and cats.

**NEW SKT021-ANWD**  
**Animal Wonders**  
3-pocket, virtual V-neck,  
shaped hem, detailed cover  
stitching  
*Sizes: XS - 5XL, CB: 25.5"*

**Coordinating  
Pant Colors:**  
**01 Black**  
**18 Pewter**  
**230 Khaki**  
**2535 Bright  
Marigold**



**NEW SKT021-TRRT**  
**Travel Retrievers**  
3-pocket, virtual V-neck,  
shaped hem, detailed cover  
stitching  
*Sizes: XS - 5XL, CB: 25.5"*

**Coordinating  
Pant Colors:**  
**230 Khaki**  
**471 Moonstruck**  
**2301 Vibrance  
Pink**  
**2535 Bright  
Marigold**



**BOBS**  
from Skechers.

When you purchase BOBS, a donation will be made to Petco Love to help save the lives of dogs and cats.

# New MATERNITY COLLECTION

## NEW SKT269 Bloom Maternity Top

1-pocket banded V-neck, welt chest pocket, faux wrap upper body with gathered knit lower body maternity top

Sizes: XS - 3XL, CB: 26"

Color shown: 41 Navy

Knit Accents Content:

86% Nylon/14% Spandex



01 Black	7/1
18 Pewter	7/1
41 Navy	7/1

SCAN FOR TOP & BOTTOM DETAILS



All Styles Main Fabric

54% Polyester

40% Recycled Polyester

6% Spandex

## NEW SKP705 Nurture Maternity Pant

7-pocket maternity knit waistband, slanted front pockets, knit side leg panels, double cargo pocket and back pocket straight leg pant

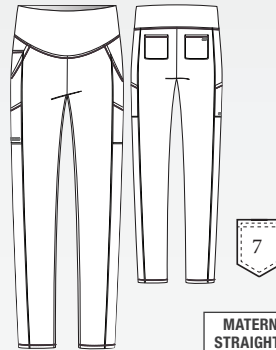
Sizes: XS - 3XL, I: 30"

Leg opening: 7"

Color shown: 18 Pewter

Knit Accents Content:

86% Nylon/14% Spandex



01 Black	7/1
18 Pewter	7/1
41 Navy	7/1

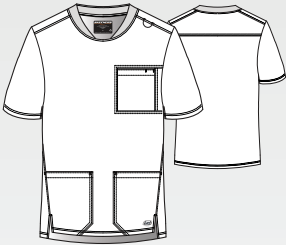


Eco-Friendly Fabric





**SKT193 Thesis Top**  
3-pocket, rounded neckline, jersey knit neck band, badge loop, inset chest pocket with pen slot, waist patch pockets, high-low hem top  
Sizes: XS - 5XL CB: 29.5"  
Color shown: 08 New Royal



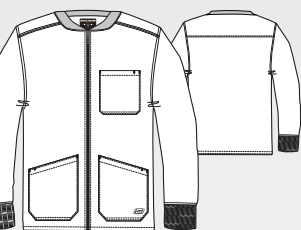
01 Black	G
08 New Royal	G
10 White	G
18 Pewter	G
37 Hunter	G
40 Ciel	G
41 Navy	G
65 Wine	G
328 Bahama	G

**SK0112 Structure Top**  
1-pocket, crossover V-neck top with chest pocket, full running side step-cut side vent detail  
Sizes: XS - 5XL, CB: 29.5"  
Color shown: 471 Moonstruck



01 Black	G
08 New Royal	G
10 White	G
18 Pewter	G
37 Hunter	G
39 Teal	G
40 Ciel	G
41 Navy	G
65 Wine	G
230 Khaki	G
328 Bahama	G
471 Moonstruck	G
503 Galaxy	G
1276 New Grape	G
1277 Eggplant	G
1295 True Red	G

**SK0408 Structure Warm-Up**  
3-pocket, rib collar and cuffs, with zip front closure  
Sizes: XS - 5XL, CB: 30"  
Color shown: 230 Khaki



01 Black	G
08 New Royal	G
10 White	G
18 Pewter	G
37 Hunter	G
39 Teal	G
40 Ciel	G
41 Navy	G
65 Wine	G
230 Khaki	G
328 Bahama	G
471 Moonstruck	G
503 Galaxy	G
1276 New Grape	G
1277 Eggplant	G
1295 True Red	G

Seamless Cuff:  
80% Polyester/20% spandex knit  
Dyed-to-match Zippers

All Styles Main Fabric  
54% Polyester/40% Recycled Polyester/6% Spandex

G denotes colors supported for Groups



5-pocket, encased elastic waistband with drawcord, zip-fly, on-seam front pockets, top-entry cargo pockets, inner thigh gusset, patch back pocket, slim straight pant

Sizes: XS - 5XL, I: 32"  
XSS - 2XLS, I: 30"  
XST - XLT, I: 34"  
Leg opening: 7.5"  
Color shown: 65 Wine



01 Black	7/1
08 New Royal	7/1
10 White	7/1
18 Pewter	7/1
37 Hunter	7/1
40 Ciel	7/1
41 Navy	7/1
65 Wine	7/1
328 Bahama	7/1

4-pocket, full elastic waistband  
drawcord, zip-fly, inseam gusset, cargo  
pocket

Sizes: XS - 5XL, I: 32"  
XSS - XLS, I: 30"  
ST - XLT, I: 34"  
Leg opening: 8.5"  
Color shown: 37 Hunter



01 Black	G
08 New Royal	G
10 White	G
18 Pewter	G
37 Hunter	G
39 Teal	G
40 Ciel	G
41 Navy	G
65 Wine	G
230 Khaki	G
328 Bahama	G
471 Moonstruck	G
503 Galaxy	G
1276 New Grape	G
1277 Eggplant	G
1295 True Red	G

3-pocket, self full encased elastic waistband with drawcord, zip-fly, velcro closure single patch cargo pocket, rib cuff jogger

Sizes: XS - 3XL, I: 29"  
SS - XLS, I: 27"  
Leg opening: 4.5"  
Color shown: 40 Ciel

**MID-RISE  
JOGGER LEG**

01 Black	G
08 New Royal	G
18 Pewter	G
37 Hunter	G
40 Ciel	G
41 Navy	G
65 Wine	G
328 Bahama	G





# New FALL Color

**1578 Imperial Violet**

**GRST249 DEFINE TOP**

**GRSP685 MOMENTUM PANT**



**GREY'S ANATOMY**  
PROFESSIONAL WEAR BY BARCO

© ABC Signature

 **KNIT STRETCH**

#### **PRIMARY FABRIC CONTENT**

58% Nylon

22% Polyester

20% Spandex

**GRSP684**  
**Swift Pant**



**GRST249**  
**Define Top**



**GRST254**  
**Renew Top**



**GRSP685**  
**Momentum Pant**





# New FALL STYLES

**NEW GRST275 CLARITY TOP**

**NEW GRSP706 FOCUS PANT**



**SCAN FOR DETAILS**



**PRIMARY FABRIC CONTENT**

58% Nylon

22% Polyester

20% Spandex

**GREY'S ANATOMY**  
PROFESSIONAL WEAR BY BARCO  
© ABC Signature  
**KNIT STRETCH**





**GREY'S ANATOMY**  
PROFESSIONAL WEAR BY BARCO  
©ABC Signature  
**KNIT STRETCH**

**GRST249 Define Top**  
2-pocket V-notch neckline, cap sleeves with contour seams, active back yoke top  
*Sizes: XXS - 5XL, CB:25.5"*  
*Color shown: 1578 Imperial Violet*



**GRST250 Motivate Top**  
2-pocket curved V-neckline with cap sleeves, hidden on-seam panel pockets, banded bottom top  
*Sizes: XXS - 5XL, CB:24"*  
*Color shown: 65 Wine*



**GRST254 Renew Top**  
1-pocket snap placket collared, dolman sleeve with back yoke box pleat top  
*Sizes: XXS - 5XL, CB:25.5"*  
*Color shown: 08 New Royal*



**GRSW923 Ease Warm-Up**  
4-pocket zip-front collar with yoke, drop-shoulder, banded bottom warm-up  
*Sizes: XS - 5XL, CB:23"*  
*Color shown: 905 Steel*



**ANTIMICROBIAL**

01 Black
08 New Royal
23 Indigo
65 Wine
905 Steel

*Seasonal Color:*  
**1578 Imperial Violet 7/1**

**ANTIMICROBIAL**

01 Black
08 New Royal
23 Indigo
65 Wine
905 Steel

**ANTIMICROBIAL**

01 Black
08 New Royal
23 Indigo
65 Wine
905 Steel

*Seasonal Color:*  
**1578 Imperial Violet 7/1**

**ANTIMICROBIAL**

01 Black
08 New Royal
23 Indigo
65 Wine
905 Steel

**All Styles Main Fabric**  
*58% Nylon / 22% Polyester / 20% Spandex*



**GRSP684 Swift Pant**

5-pocket high-rise, V-front waistband, fit & flare leg pant

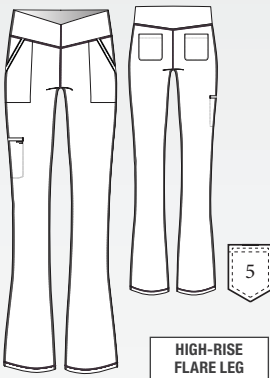
Sizes: XXS-5XL, I: 31.5"

XXSP-2XLP, I: 29.5"

XST-XLT, I: 33.5"

Leg opening: 9.5"

Color shown: 65 Wine



**ANTIMICROBIAL**

01 Black

08 New Royal

23 Indigo

65 Wine

905 Steel

Seasonal Color:

1578 Imperial Violet 7/1

**GRSP685 Momentum Pant**

6-pocket high-rise, flat front waistband with inner self drawcord, back tabs, back patch pockets, straight leg pant

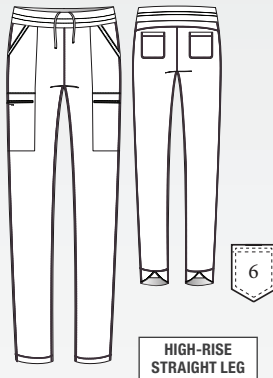
Sizes: XXS-5XL, I: 31"

XXSP-2XLP, I: 29"

XST-XLT, I: 33"

Leg opening: 6.75"

Color shown: 1578 Imperial Violet



**ANTIMICROBIAL**

01 Black

08 New Royal

23 Indigo

65 Wine

905 Steel

Seasonal Color:

1578 Imperial Violet 7/1

**NEW GRST275 Clarity Top**

Men's 2-pocket banded V-neck, right shoulder badge loop, framed zipper chest pocket, left sleeve patch pocket, notched high-low hem top

Sizes: XS - 5XL, CB: 29"

Color shown: 905 Steel



**ANTIMICROBIAL**

01 Black

7/1

23 Indigo

7/1

905 Steel

7/1

**NEW GRSP706 Focus Pant**

4-pocket encased elastic waistband with drawcord, zip-fly, slanted front pockets, framed zipper cargo pocket, inner thigh gusset, framed zipper back pocket slim straight pant

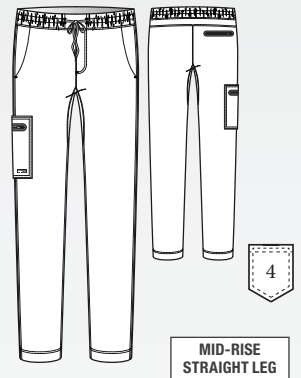
Sizes: XS-5XL, I: 32"

XSS-2XLS, I: 30"

XST-XLT, I: 34"

Leg opening: 7.25"

Color shown: 905 Steel



**ANTIMICROBIAL**

01 Black

7/1

23 Indigo

7/1

905 Steel

7/1

**All Styles Main Fabric**

58% Nylon / 22% Polyester / 20% Spandex





# New FALL Color

2043 Sweet Basil

**GRST230 AVERY TOP**  
**GRSP692 RENEE PANT**



**GREY'S ANATOMY**  
PROFESSIONAL WEAR BY BARCO  
© ABC Signature

**+ SPANDEX STRETCH**

#### PRIMARY FABRIC CONTENT

74% Polyester

23% Rayon

3% Spandex Twill

**GRSP537**  
**Eden Jogger**



**NEW GRST230G - Avery Top**  
**Animal Expression**



**GRST011**  
**Emma Top**



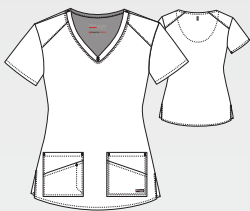
**GRSP692**  
**Renee Pant**





GRST011 Emma Top

4-pocket, V-neck with angled seams  
Sizes: XXS - 5XL, CB: 26"  
Color shown: 2043 Sweet Basil



01 Black	G
08 New Royal	G
10 White	G
23 Indigo	G
37 Hunter	G
39 Teal	G
40 Ciel	G
65 Wine	G
312 Olive	G
328 Bahama	G
471 Moonstruck	G
503 Galaxy	G
600 Scarlet	
905 Steel	G
1277 Eggplant	G
2301 Vibrance Pink	

Seasonal Color:	
2043 Sweet Basil	7/1

GRST045 Serena Top

3-pocket, ribbed V-neck, PDA pocket, logo tape side slit detail, rib knit back insets with princess seam, straight hem  
Sizes: XXS - 3XL, CB: 25.5"  
Color shown: 2301 Vibrance Pink  
Knit Accent Content:  
94% Polyester / 6% Spandex



ANTIMICROBIAL

01 Black	G
08 New Royal	G
10 White	G
23 Indigo	G
37 Hunter	G
39 Teal	G
40 Ciel	G
65 Wine	G
312 Olive	G
328 Bahama	G
471 Moonstruck	G
600 Scarlet	
905 Steel	G
1277 Eggplant	G
2301 Vibrance Pink	

GRST230 Avery Top

2-pocket, banded collar, notch sleeves, angled waist pockets, back yoke, relaxed-fit top  
Sizes: XXS - 5XL, CB: 26"  
Color shown: 2043 Sweet Basil



ANTIMICROBIAL

01 Black	G
08 New Royal	G
10 White	G
23 Indigo	G
37 Hunter	7/1 G
39 Teal	7/1 G
40 Ciel	G
65 Wine	G
312 Olive	7/1 G
328 Bahama	G
471 Moonstruck	7/1 G
503 Galaxy	7/1 G
905 Steel	G
1277 Eggplant	7/1 G

Seasonal Color:	
2043 Sweet Basil	7/1

NEW GRST230G-ANEX Animal Expression

2-pocket, banded collar, notch sleeve, angled waist pockets, back yoke, relaxed-fit top  
Sizes: XXS - 5XL, CB: 26"



Fabric Content:  
50% Polyester  
43% Recycled Polyester  
7% Spandex

Coordinating Pant Colors:

01 Black	65 Wine
230 Khaki	312 Olive
2043 Sweet Basil	

All Styles Main Fabric  
74% Polyester / 23% Rayon / 3% Spandex Twill

G denotes colors supported for Groups



**GVST028 Bree Tuck-In Top**

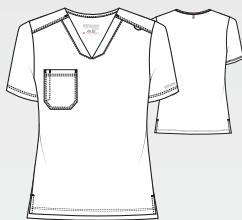
1-pocket, knit V-neck with light grey badge loop and shaped high-low hem

Sizes: XS - 3XL, CB: 25.5"

Color shown: 471 Moonstruck

Knit Accent Content:

88% Polyester / 12% Spandex

**GRST136 Capri Top**

2-pocket, hourglass V-neck, front and back princess seams, chest and sleeve welt pockets, rib knit center back panel, high-low hem

Sizes: XXS - 3XL, CB: 25.5"

Color shown: 905 Steel

Knit Accent Content:

94% Polyester / 6% Spandex

**GRST001 Kim Top**

3-pocket, V-neck surplice with front and back princess seams, zip front pocket

Sizes: XXS - 5XL, CB: 26"

Color shown: 08 New Royal

**ANTIMICROBIAL**

01 Black

08 New Royal

10 White

23 Indigo

37 Hunter

39 Teal

40 Ciel

65 Wine

312 Olive

328 Bahama

471 Moonstruck

503 Galaxy

905 Steel

905 Steel

2301 Vibrance Pink

01 Black

08 New Royal

23 Indigo

23 Indigo

23 Indigo

23 Indigo

23 Indigo

23 Indigo

23 Indigo

23 Indigo

23 Indigo

23 Indigo

23 Indigo

23 Indigo

23 Indigo

23 Indigo

01 Black

08 New Royal

10 White

23 Indigo

23 Indigo

23 Indigo

23 Indigo

23 Indigo

23 Indigo

23 Indigo

23 Indigo

23 Indigo

23 Indigo

23 Indigo

23 Indigo

23 Indigo

**G** denotes colors supported for Groups

**All Styles Main Fabric**  
74% Polyester/23% Rayon/3% Spandex Twill





GRSP526 Serena Pant

7-pocket, duchess knit waistband with drawcord, mid-rise, patch pockets, double cargo, slit hem, logo tape detail tapered leg

Sizes: XXS - 3XL, I: 30"  
XSP - XLP, I: 28"  
XST - XLT, I: 32"  
Leg opening: 6.5"  
Color shown: 23 Indigo

Knit Accents Content:  
88% Polyester / 12% Spandex



ANTIMICROBIAL

01 Black	G
08 New Royal	G
10 White	G
23 Indigo	G
37 Hunter	G
39 Teal	G
40 Ciel	G
65 Wine	G
312 Olive	G
328 Bahama	G
471 Moonstruck	G
600 Scarlet	G
905 Steel	G
2301 Vibrance Pink	G

GRSP537 Eden Jogger

5-pocket, knit rib drawcord waistband, zipper front pockets, double single cargo, ribbed cuff jogger

Sizes: XXS - 3XL, I: 29"  
XXSP - 2XLP, I: 27"  
XST - XLT, I: 31"  
Leg opening: 4.25"  
Color shown: 2043 Sweet Basil

Knit Accents Content:  
94% Polyester / 6% Spandex



01 Black	G
08 New Royal	G
10 White	G
23 Indigo	G
37 Hunter	G
39 Teal	G
40 Ciel	G
65 Wine	G
312 Olive	G
328 Bahama	G
471 Moonstruck	G
503 Galaxy	G
905 Steel	G
2301 Vibrance Pink	G

Seasonal Color:  
2043 Sweet Basil 7/1

GRSP500 Kim Pant

3-pocket, logo plush elastic back waistband, zip cargo pocket

Sizes: XXS - 5XL, I: 31"  
XXSP - 2XLP, I: 29"  
XXST - XLT, I: 33.5"  
Leg opening: 7.75"  
Color shown: 600 Scarlet

Knit Accents Content:  
88% Polyester / 12% Spandex



01 Black	G
08 New Royal	G
10 White	G
23 Indigo	G
37 Hunter	G
39 Teal	G
40 Ciel	G
65 Wine	G
312 Olive	G
328 Bahama	G
471 Moonstruck	G
503 Galaxy	G
600 Scarlet	G
905 Steel	G
1277 Eggplant	G
2301 Vibrance Pink	G

All Styles Main Fabric  
74% Polyester / 23% Rayon / 3% Spandex Twill

G denotes colors supported for Groups



**GRSP527 Carly Jogger**

7-pocket, rib trim waistband, self drawcord, mid-rise, front slant pockets, double cargo pocket, zipper PDA, rib knit cuff jogger

Sizes: XXS - 3XL, I: 29"

XSP - XLP, I: 27"

XST - XLT, I: 31"

Leg opening: 4.25"

Color shown: 08 New Royal

Knit Accents Content:

94% Polyester / 6% Spandex

88% Polyester / 12% Spandex



MID-RISE  
JOGGER LEG

**ANTIMICROBIAL**

01 Black
08 New Royal
23 Indigo
37 Hunter
65 Wine
312 Olive
328 Bahama
600 Scarlet
905 Steel

**GRSP692 Renee Pant**

6-pocket, rib knit waistband with inner drawcord, high-rise, slanted front pockets, double cargo pockets, curved back yoke with on-seam pockets, tapered leg pant

Sizes: XXS - 5XL, I: 30"

XXSP - 2XLP, I: 28"

XXST - XLT, I: 32"

Leg opening: 6.75"

Color shown: 2043 Sweet Basil



HIGH-RISE  
TAPERED LEG

**ANTIMICROBIAL**

01 Black
08 New Royal
23 Indigo
65 Wine
328 Bahama
905 Steel

7/1

7/1

Seasonal Color:

2043 Sweet Basil 7/1

**GRSP677 Emerson Pant**

5-pocket, encased elastic waistband with inside drawcord, high-rise, slanted front pockets, decorative front leg seam, welt cargo pocket, patch back pockets, wide leg pant

Sizes: XXS - 3XL, I: 31"

XSP - XLP, I: 29"

XST - XLT, I: 33"

Leg opening: 12"

Color shown: 905 Steel



HIGH-RISE  
WIDE LEG

**ANTIMICROBIAL**

01 Black
23 Indigo
905 Steel

**G** denotes colors supported for Groups

All Styles Main Fabric  
74% Polyester / 23% Rayon / 3% Spandex Twill





**GRSW017 Millie Warm-Up**  
3-pocket, rib neck, zip front  
placket, PDA and zip pocket,  
princess seamed front, back  
seams and ribbed cuff  
Sizes: XS - 3XL, CB: 26"  
Color shown: 65 Wine  
Knit Accent Content:  
94% Polyester / 6% Spandex



01 Black
08 New Royal
10 White
23 Indigo
37 Hunter
39 Teal
40 Ciel
65 Wine
312 Olive
328 Bahama
471 Moonstruck
503 Galaxy
600 Scarlet
905 Steel
2301 Vibrance Pink

**GRSW873 Gianna Warm-Up**  
5-pocket, round neck, zip front,  
PDA and zipper pocket, rib back  
panel, rib cuff warm-up  
Sizes: XXS - 5XL, CB: 25.5"  
Color shown: 328 Bahama  
Knit Accent Content:  
94% Polyester / 6% Spandex



ANTIMICROBIAL

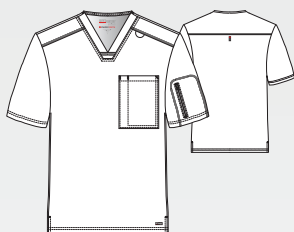
01 Black	G
08 New Royal	G
10 White	G
23 Indigo	G
37 Hunter	G
39 Teal	G
40 Ciel	G
65 Wine	G
312 Olive	G
328 Bahama	G
471 Moonstruck	G
600 Scarlet	
905 Steel	G
1277 Eggplant	G

All Styles Main Fabric  
74% Polyester / 23% Rayon / 3% Spandex Twill

G denotes colors supported for Groups



**GRST079 Murphy Top**  
2-pocket, V-neck shaped chest pocket, zipper sleeve pocket top  
*Sizes: XS - 5XL, CB: 29"*  
*Color shown: 23 Indigo*



## ANTIMICROBIAL

01 Black	G
08 New Royal	G
10 White	G
23 Indigo	G
37 Hunter	G
39 Teal	G
40 Ciel	G
65 Wine	G
312 Olive	G
328 Bahama	G
471 Moonstruck	G
503 Galaxy	G
905 Steel	G
1277 Eggplant	G

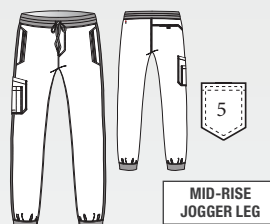
**GRSP617 Hudson Pant**  
6-pocket, rib knit with plush elastic embedded waistband, two-tone drawcord, front zip-fly, on-seam front pockets, side leg panel with top entry cargo pockets, welt back pocket, slim straight pant  
*Sizes: XS - 5XL, I: 32"*  
*XSS - 2XLS, I: 30"*  
*XST - 2XLT, I: 34"*  
*Leg opening: 7.5"*  
*Color shown: 37 Hunter*



## ANTIMICROBIAL

01 Black	G
08 New Royal	G
10 White	G
23 Indigo	G
37 Hunter	G
39 Teal	G
40 Ciel	G
65 Wine	G
312 Olive	G
328 Bahama	G
471 Moonstruck	G
503 Galaxy	G
905 Steel	G
1277 Eggplant	G

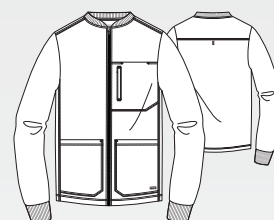
**GRSP550 Murphy Jogger**  
5-pocket, rib knit with plush elastic embedded waistband, two-tone drawcord, front zip-fly, zipper front pockets, angled single double cargo pocket, single back pocket, rib knit cuff jogger  
*Sizes: XS - 5XL, I: 29"*  
*XSS - 2XLS, I: 27"*  
*XST - XLT, I: 31"*  
*Leg opening 5.25"*  
*Color shown: 40 Ciel*  
*Knit Accents Content: 94% Polyester /6% Spandex*



## ANTIMICROBIAL

01 Black	G
08 New Royal	G
10 White	G
23 Indigo	G
37 Hunter	G
39 Teal	G
40 Ciel	G
65 Wine	G
312 Olive	G
328 Bahama	G
471 Moonstruck	G
503 Galaxy	G
905 Steel	G
1277 Eggplant	G

**GRSW871 React Warm-Up**  
5-pocket knit stand collar with zipper front, chest patch, zipper welt pocket, chin guard, and knit cuff warm-up  
*Sizes: XS - 5XL, CB: 29"*  
*Color shown: 08 New Royal*  
*Knit Accents Content: 94% Polyester /6% Spandex*



## ANTIMICROBIAL

01 Black	G
08 New Royal	G
10 White	G
23 Indigo	G
37 Hunter	G
39 Teal	G
40 Ciel	G
65 Wine	G
312 Olive	G
328 Bahama	G
471 Moonstruck	G
503 Galaxy	G
905 Steel	G
1277 Eggplant	G

**G** denotes colors supported for Groups

All Styles Main Fabric  
74% Polyester /23% Rayon /3% Spandex Twill





# New FALL Color

**2509 Sedona Red**

**GSST181 SWAY TOP**  
**GSPP627 COSMO PANT**



**GREY'S ANATOMY**  
PROFESSIONAL WEAR BY BARCO

© ABC Signature

 **EVOLVESTRETCH**

**PRIMARY FABRIC CONTENT**

48% CiCLO® Polyester

44% Recycled Polyester

8% Spandex

**GSST180**  
**Rhythm Top**



**GSSP627**  
**Cosmo Pant**



**GSSP625**  
**Terra Jogger**



**NEW GSST257**  
**Wanderlust**  
**Waffle Knit Top**





GSST180 Rhythm Top

2-pocket, V-neck with piped edge finish, inset waist pockets, pen pocket  
Sizes: XXS - 5XL, CB: 25.5"  
Color shown: 2509 Sedona Red



01 Black	G
08 New Royal	G
10 White	G
23 Indigo	G
37 Hunter	G
39 Teal	G
40 Ciel	G
65 Wine	G
328 Bahama	G
905 Steel	G
1276 New Grape	G
1295 True Red	G
2314 Driftwood	
2348 Fern	G

Seasonal Color:	
2509 Sedona Red	7/1

GSST181 Sway Top

1-pocket, banded V-neck, badge loop, chest patch pocket, high-low step hem, tuck-in  
Sizes: XXS - 5XL, CB: 25.5"  
Color shown: 39 Teal

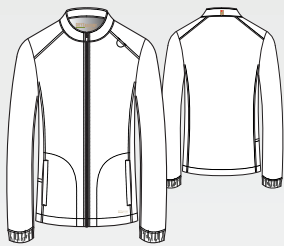


01 Black	G
08 New Royal	G
10 White	G
23 Indigo	G
37 Hunter	G
39 Teal	G
40 Ciel	G
65 Wine	G
328 Bahama	G
905 Steel	G
1276 New Grape	G
1295 True Red	G
2314 Driftwood	
2348 Fern	G

Seasonal Color:	
2509 Sedona Red	7/1

GSSW886 Virtue Warm-Up

3-pocket, banded collar, badge loop, zip-front, side-entry waist pockets warm-up  
Sizes: XXS - 5XL, CB: 26"  
Color shown: 1276 New Grape



01 Black	G
08 New Royal	G
10 White	G
23 Indigo	G
37 Hunter	G
39 Teal	G
40 Ciel	G
65 Wine	G
328 Bahama	G
905 Steel	G
1276 New Grape	G
1295 True Red	G
2348 Fern	G

All Styles Main Fabric  
48% CiCLO Polyester / 44% Recycled Polyester / 8% Spandex

G denotes colors supported for Groups





**GSSP627 Cosmo Pant**

6-pocket, encased elastic waistband with inner drawcord, mid-rise, side panels with angled welt and patch cargo pocket, tapered leg pant

Sizes: XXS - 5XL, I: 30"

XXSP - 2XLP, I: 28"

XST - XLT, I: 32"

Leg opening: 7"

Color shown: 2509 Sedona Red



01 Black	G
08 New Royal	G
10 White	G
23 Indigo	G
37 Hunter	G
39 Teal	G
40 Ciel	G
65 Wine	G
328 Bahama	G
905 Steel	G
1276 New Grape	G
1295 True Red	G
2314 Driftwood	
2348 Fern	G

Seasonal Color:

2509 Sedona Red	7/1
-----------------	-----

**GSSP625 Terra Jogger**

6-pocket, encased elastic waistband with drawcord, mid-rise, front pockets with piped edge finish, double cargo pocket, elastic cuff jogger

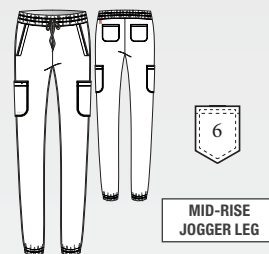
Sizes: XXS - 5XL, I: 29"

XXSP - 2XLP, I: 27"

XST - XLT, I: 31"

Leg opening: 4.75"

Color shown: 08 New Royal



01 Black	G
08 New Royal	G
10 White	G
23 Indigo	G
37 Hunter	G
39 Teal	G
40 Ciel	G
65 Wine	G
328 Bahama	G
905 Steel	G
1276 New Grape	G
1295 True Red	G
2314 Driftwood	
2348 Fern	G

Seasonal Color:

2509 Sedona Red	7/1
-----------------	-----

**All Styles Main Fabric**

48% CiCLO Polyester / 44% Recycled Polyester / 8% Spandex

**G** denotes colors supported for Groups

**CiCLO**  
FUNCTIONAL. SENSIBLE. SUSTAINABLE.



**NEW GSST257 Wanderlust Waffle Knit Top**

Women's 1-pocket, rounded neck, chest patch pocket with pen loop, long sleeve top  
Sizes: *XXS - 3XL, CB: 24.5"*  
Color shown: 2557 Soft Dune

*\*Available 9/1*



**NEW GSST256 Nomad Waffle Knit Top**

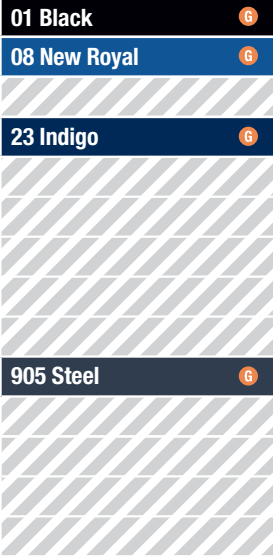
Men's 1-pocket, rounded neck, chest patch pocket with pen loop, long sleeve top  
Sizes: *XS - 3XL, CB: 27.5"*  
Color shown: 2348 Fern

*\*Available 9/1*



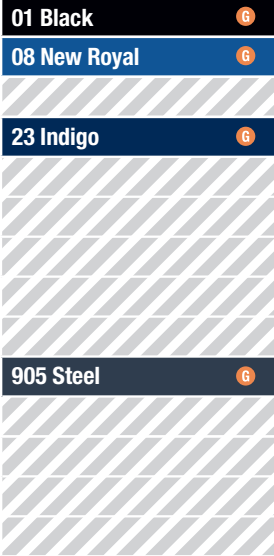
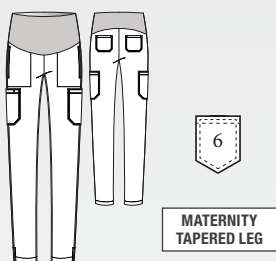
**GSST262 Promise Maternity Top**

2-pocket, stretch maternity hourglass V-neck, front and back princess seams with jersey knit side panels, on-seam waist pockets, straight hem top  
Sizes: *XS - 3XL, CB: 26"*  
Color shown: 08 New Royal



**GSSP690 Promise Maternity Pant**

6-pocket, stretch maternity jersey knit waistband, on-seam front pockets, cargo pockets with piped edge finish, patch back pockets, tapered leg pant  
Sizes: *XS - 3XL, I: 30"*  
Leg opening: 7.25"  
Color shown: 08 New Royal



SCAN FOR DETAILS



**Waffle Knit Fabric**  
63% Recycled Polyester / 34% Cotton / 3% Spandex

**All Styles Main Fabric**  
48% CiCLO Polyester / 44% Recycled Polyester / 8% Spandex

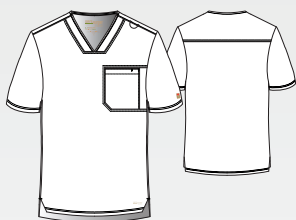


**GSST179 Journey Top**

1-pocket, V-neck with piped edge finish, badge loop, inset chest pocket, high-low hem with notched side seam top

Sizes: XS - 5XL, CB: 29"

Color shown: 328 Bahama



01 Black	G
08 New Royal	G
10 White	G
23 Indigo	G
37 Hunter	G
39 Teal	G
40 Ciel	G
65 Wine	G
328 Bahama	G
905 Steel	G
1276 New Grape	G
1295 True Red	G
2314 Driftwood	
2348 Fern	G

**GSSP649 Highland Pant**

5-pocket, textured plush elastic waistband with two-way drawcord, zip-fly, on-seam front pockets with shadow top stitching, inset cargo pocket with pen slot, inner thigh gusset, double back pocket slim straight pant

Sizes: XS - 5XL, I: 32"

XSS - 2XLS, I: 30"

XST - XLT, I: 34"

Leg opening: 7.5"

Color shown: 1276 New Grape



01 Black	G
08 New Royal	G
10 White	G
23 Indigo	G
37 Hunter	G
39 Teal	G
40 Ciel	G
65 Wine	G
328 Bahama	G
905 Steel	G
1276 New Grape	G
1295 True Red	G
2314 Driftwood	
2348 Fern	G

**GSSP626 Voyager Jogger**

5-pocket, encased elastic waistband with drawcord, front pockets with piped edge finish, patch cargo pocket, half back yoke with inset pocket, elastic cuff jogger

Sizes: XS - 5XL, I: 29"

XSS - 2XLS, I: 27"

XST - XLT, I: 31"

Leg opening: 5.25"

Color shown: 65 Wine



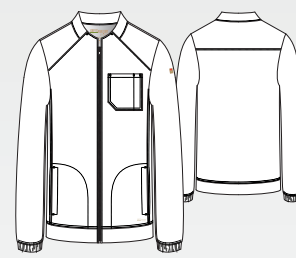
01 Black	G
08 New Royal	G
10 White	G
23 Indigo	G
37 Hunter	G
39 Teal	G
40 Ciel	G
65 Wine	G
328 Bahama	G
905 Steel	G
1276 New Grape	G
1295 True Red	G
2314 Driftwood	
2348 Fern	G

**GSSW887 Cycle Warm-Up**

3-pocket, banded collar, zip-front, chest patch pocket with pen slot, side-entry waist pockets warm-up

Sizes: XS - 5XL, CB: 29"

Color shown: 2348 Fern



01 Black	G
08 New Royal	G
10 White	G
23 Indigo	G
37 Hunter	G
39 Teal	G
40 Ciel	G
65 Wine	G
328 Bahama	G
905 Steel	G
1276 New Grape	G
1295 True Red	G
2348 Fern	G

**All Styles Main Fabric**

48% CiCLO Polyester / 44% Recycled Polyester / 8% Spandex

**G** denotes colors supported for Groups

**CiCLO**  
FUNCTIONAL. SENSIBLE. SUSTAINABLE.





GRT261 EVELYN TOP  
GRP689 FINLEY JOGGER



**GREY'S ANATOMY**  
PROFESSIONAL WEAR BY BARCO  
© ABC Signature

**PRIMARY FABRIC CONTENT**  
77% Polyester  
23% Rayon

**GRP689**  
**Finley Jogger**



**GRT261**  
**Evelyn Top**



**GRT261**  
**Evelyn Top**



**GRP689**  
**Finley Jogger**



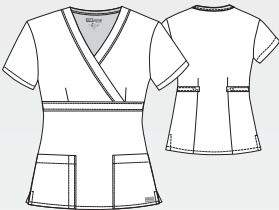


**GRT261 Evelyn Top**  
3-pocket, banded V-neck with jersey knit trim, badge loop, front and back princess seams, angled waist pockets, shirttail hem top  
*Sizes: XS - 3XL, CB: 25.5"*  
*Color shown: 08 New Royal*



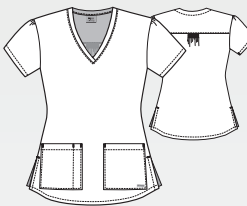
01 Black
08 New Royal
23 Indigo
905 Steel

**4153 Riley Top**  
3-pocket, mock wrap with tab back  
*Sizes: XXS - 5XL, CB: 25"*  
*Color shown: 23 Indigo*



01 Black
08 New Royal
23 Indigo
37 Hunter
40 Ciel
905 Steel

**71166 Aubrey Top**  
2-pocket, V-neck with pen slot and Shirred back yoke  
*Sizes: XS - 5XL, CB: 26"*  
*Color shown: 37 Hunter*



01 Black
08 New Royal
23 Indigo
37 Hunter
40 Ciel
65 Wine
905 Steel

**41423 Cora Top**  
4-pocket, crossover V-neck with side panels, zipper pocket and tulip sleeve detail, fitted back  
*Sizes: XXS - 5XL, CB: 25.5"*  
*Color shown: 328 Bahama*



01 Black
08 New Royal
10 White
23 Indigo
37 Hunter
40 Ciel
65 Wine
328 Bahama
905 Steel

**4450 Jamie Warm-Up**  
4-pocket, round neck warm-up with logo snaps and dyed-to-match knit cuffs with fitted back  
*Sizes: XS - 5XL, CB: 28"*  
*Color shown: 65 Wine*



*Knit Accents Content:*  
*94% Polyester / 6% Spandex*

**All Styles Main Fabric**  
*77% Polyester / 23% Rayon*





**4277 Mia Pant**

6-pocket, flat front, mid-rise, knit elastic back waistband with drawcord, double cargo, back pockets

Sizes: XXS - 5XL, I: 31.5"

XXSP - 2XLP, I: 29.5"

XXST - XLT, I: 33.5"

Leg opening: 8.5"

Color shown: 905 Steel

Knit Accents Content:

88% Polyester/12% Spandex

**GRP534 Kira Jogger**

5-pocket, tunnel drawcord waistband, mid-rise, double cargo with zipper pocket, tailored side seam knit cuff jogger

Sizes: XS - 3XL, I: 28"

XSP - XLP, I: 26"

XST - XLT, I: 30"

Leg opening: 4.5"

Color shown: 08 New Royal

Knit Accents Content:

94% Polyester / 6% Spandex

**4275 Aubrey Pant**

3-pocket, logo plush elastic waistband pant with drawcord

Sizes: XXS - 5XL, I: 31"

XXSP - XLP, I: 29"

XXST - XLT, I: 33"

Leg opening: 8.5"

Color shown: 65 Wine

**4232 Riley Pant**

5-pocket, tie front elastic back, mid-rise flare leg

Sizes: XXS - 5XL, I: 31.5"

XXSP - 2XLP, I: 29.5"

XXST - XLT, I: 33.5"

Leg opening: 10"

Color shown: 40 Ciel

**GRP689 Finley Jogger**

6-pocket, jersey knit waistband with drawcord and inside logo elastic, mid-rise, slanted front pockets, multi cargo pocket, back patch pocket, jersey knit cuff jogger

Sizes: XS - 3XL, I: 29"

XSP - XLP, I: 27"

XST - XLT, I: 31"

Leg opening: 4.5"

Color shown: 23 Indigo



01 Black
08 New Royal
10 White
23 Indigo
37 Hunter
40 Ciel
65 Wine
328 Bahama
905 Steel

01 Black
08 New Royal
10 White
23 Indigo
37 Hunter
40 Ciel
65 Wine
328 Bahama
905 Steel

01 Black
08 New Royal
23 Indigo
37 Hunter
40 Ciel
65 Wine
328 Bahama
905 Steel

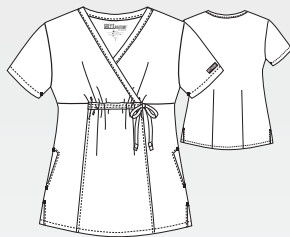
01 Black
08 New Royal
23 Indigo
37 Hunter
40 Ciel
905 Steel

01 Black
08 New Royal
23 Indigo
905 Steel

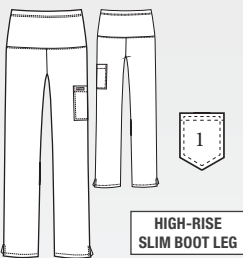
All Styles Main Fabric  
77% Polyester / 23% Rayon



**GRT094 Lilah Maternity Top**  
2-pocket, mock wrap empire line  
top with tie and fitted back  
*Sizes: XS - 2XL, CB: 27"*  
*Color shown: 23 Indigo*



**GRP560 Lilah Maternity Pant**  
1-pocket, knit maternity waistband  
with single cargo pocket pant  
*Sizes: XS - 2XL, I: 31"*  
*Leg opening: 8.625"*  
*Color shown: 905 Steel*



**All Styles Main Fabric**  
*77% Polyester/23% Rayon*

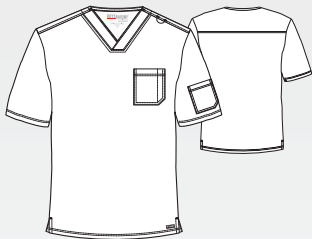


**GRT091 Evan Top**

2-pocket, lapover V-neck,  
contrast badge loop at  
left shoulder, chest pocket  
with pen slot, single sleeve  
pocket with side vents

Sizes: XS - 5XL, CB: 29"

Color shown: 328 Bahama



01 Black

08 New Royal

10 White

23 Indigo

37 Hunter

40 Ciel

65 Wine

328 Bahama

905 Steel

**GRP558 Evan Pant**

5-pocket, full elastic  
waistband with contrast  
drawcord, front zip-fly,  
both side entry hand pockets,  
one right back patch pocket,  
and one single double left  
cargo pocket

Sizes: XS - 5XL, I: 32"

XST - XLT, I: 34"

XSS-XLS, I: 30"

Leg opening: 8.5"

Color shown: 08 New Royal



01 Black

08 New Royal

10 White

23 Indigo

37 Hunter

40 Ciel

65 Wine

328 Bahama

905 Steel

All Styles Main Fabric  
77% Polyester / 23% Rayon





# New FALL Color

2551 Dark Mauve Heather

**NEW BOT270H VIGOR TOP**

**NEW BOP700H STRIVE LEGGING**



**BARCO<sup>®</sup>**  
**one**  
heart • purpose • life  
PERFORMANCE **KNIT**

SCAN FOR DETAILS



**PRIMARY FABRIC CONTENT**

80% Recycled Polyester

20% Spandex



**BOP645H**  
**Sprint Pant**



**NEW BOT270H**  
**Vigor Top**



**BOT210H**  
**Engage Top**

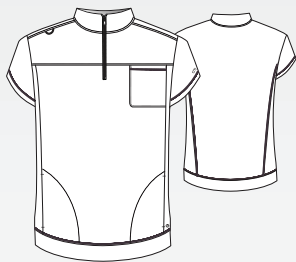


**NEW BOP700H**  
**Strive Legging**



# PERFORMANCE KNIT COLLECTION

**NEW BOT270 Vigor Top**  
Women's 3-pocket, mock neck with zipper, on-seam chest and waist pockets, banded bottom top  
Sizes: XXS - 3XL, CB: 26"  
Color shown: 23 Indigo



01 Black	7/1
23 Indigo	7/1
312 Olive	7/1
905 Steel	7/1

Seasonal Color (Style BOT270H):	
2551 Dk Mauve Heather	7/1

**BOT210 Engage Top**  
2-pocket, zip-neck with shirt collar, cuffed dolman sleeves, on-seam waist pockets, shirt tail hem top  
Sizes: XXS - 5XL, CB: 26"  
Color shown: 2551 Dark Mauve Heather



01 Black	
23 Indigo	
312 Olive	
905 Steel	

Seasonal Color (Style BOT210H):	
2551 Dk Mauve Heather	7/1

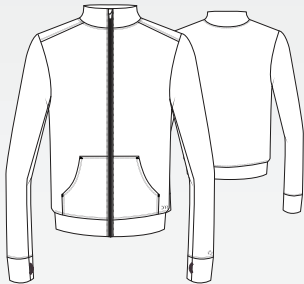
**BOT209 Victory Top**  
2-pocket, banded V-neck with overlap, angled zipper waist pockets, straight hem top  
Sizes: XXS - 5XL, CB: 25.5"  
Color shown: 312 Olive



01 Black	
23 Indigo	
312 Olive	
905 Steel	

Seasonal Color (Style BOT209H):	
2551 Dk Mauve Heather	7/1

**BOW896 Arena Warm-Up**  
2-pocket, banded collar, center front zipper, kangaroo-style waist pockets, self sleeve cuffs with thumb holes, warm-up  
Sizes: XXS - 5XL, CB: 23"  
Color shown: 905 Steel



01 Black	
23 Indigo	
905 Steel	

**Performance Knit Fabric**  
80% Recycled Polyester/20% Spandex





### NEW BOP700 Strive Legging

6-pocket, overlap front waistband, high-rise, front patch pockets and back patch pockets, double cargo pocket legging

Sizes: XXS - 3XL, I: 29"

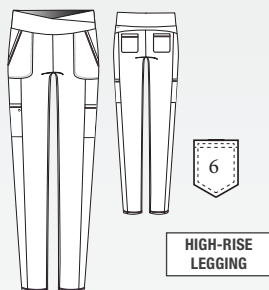
XXSP - XLP, I: 27"

XXST - XLT, I: 31"

Leg opening: 4.25"

Color shown:

2551 Dark Mauve Heather



01 Black	7/1
23 Indigo	7/1
312 Olive	7/1
905 Steel	7/1

Seasonal Color (Style BOP700H):

2551 Dk Mauve Heather	7/1
-----------------------	-----

### BOP645 Sprint Pant

7-pocket, yoga-inspired waistband, high-rise, slanted front pockets, patch and zipper cargo pockets, on-seam back pockets, fit and flare pant

Sizes: XXS - 5XL, I: 31.5"

XXSP - XLP, I: 29.5"

XXST - XLT, I: 33.5"

Leg opening: 10.5"

Color shown: 23 Indigo



01 Black	
23 Indigo	
312 Olive	
905 Steel	

Seasonal Color (Style BOP645H):

2551 Dk Mauve Heather	7/1
-----------------------	-----

### BOP631 Pro Jogger

5-pocket, drawcord waistband, slanted front pockets, inset cargo pockets, clean back, self cuff jogger

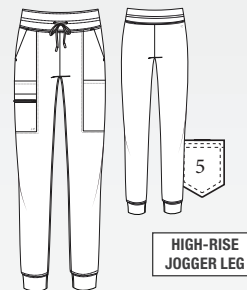
Sizes: XXS - 5XL, I: 29"

XXSP - XLP, I: 27"

XXST - XLT, I: 31"

Leg opening: 4.375"

Color shown: 312 Olive



01 Black	
23 Indigo	
312 Olive	
905 Steel	

Seasonal Color (Style BOP631H):

2551 Dk Mauve Heather	7/1
-----------------------	-----

Performance Knit Fabric  
80% Recycled Polyester/20% Spandex



# New FALL Color

2046 Prestige Pink

**NEW BOT273 SWING TOP**

**NEW BOP703 BOUNCE PANT**

**LIMITED EDITION TOP & PANT**



**BARCO®**  
**one**  
heart • purpose • life

SCAN FOR DETAILS



**PRIMARY FABRIC CONTENT**

50% Polyester

43% Recycled Polyester

7% Spandex



**5105**  
**Racer Top**



**BOP513**  
**Boost Jogger**



**NEW BOP703**  
**Bounce Pant**



**NEW 5107 - Thrive Top**  
**Pink Luminescence**





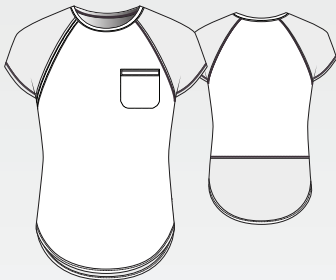
**NEW BOT273 Swing Top**

1-pocket, perforated raglan sleeve, right shoulder badge loop, welt chest pocket, back waist seam curved hem tuck-in top

Sizes: XXS - 3XL, CB: 26"

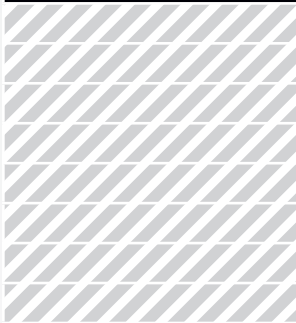
Color shown: 2046 Prestige Pink

LIMITED EDITION SCRUB TOP



01 Black

7/1



Seasonal Color:

2046 Prestige Pink

7/1

**BOT216 Flux Top**

2-pocket, knit banded collar with center front zipper, raglan seam detail, on-seam waist pockets, curved hem top

Sizes: XXS - 5XL, CB: 26"

Color shown: 40 Ciel



01 Black

08 New Royal

23 Indigo

37 Hunter

40 Ciel

65 Wine

328 Bahama

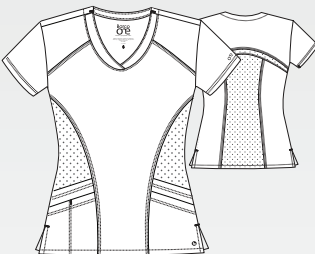
905 Steel

**5106 Pulse Top**

5-pocket, shaped V-neck with sporty seaming, perforated panels in front and back

Sizes: XXS - 5XL, CB: 25.5"

Color shown: 328 Bahama



01 Black

08 New Royal

23 Indigo

37 Hunter

40 Ciel

65 Wine

114 Cobalt

328 Bahama

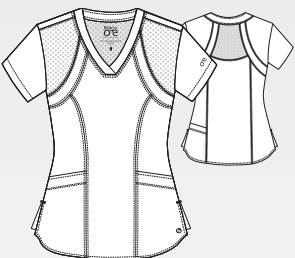
905 Steel

**5105 Racer Top**

4-pocket, V-neck with princess seaming and perforated panel details in front and back

Sizes: XXS - 5XL, CB: 25.5"

Color shown: 65 Wine



01 Black

08 New Royal

23 Indigo

37 Hunter

40 Ciel

65 Wine

114 Cobalt

328 Bahama

905 Steel

Seasonal Color:

2046 Prestige Pink

7/1

**All Styles Main Fabric**

50% Polyester/43% Recycled Polyester/7% Spandex

**G** denotes colors supported for Groups

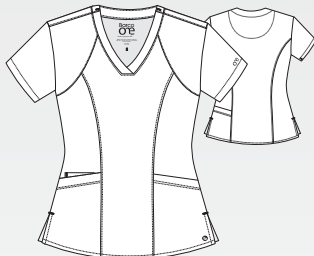


**BOW894 Venture Warm-Up**  
4-pocket, banded collar with rib knit facing, badge loop, front and back princess seams, angled top-entry pockets and hidden zipper pockets, zip-front warm-up  
Sizes: XXS - 5XL, CB: 26"  
Color shown: 37 Hunter



01 Black
08 New Royal
23 Indigo
37 Hunter
40 Ciel
65 Wine
114 Cobalt
328 Bahama
905 Steel

**NEW 5107-PILU**  
**Pink Luminescence**  
4-pocket, V-neck with front and back princess seams  
Sizes: XXS - 5XL, CB: 25.5"  
**\*Available 7/1**



**Coordinating Pant Colors:**

01 Black	10 White
905 Steel	2046 Prestige Pink

**BOK804 Accelerate Underscrub**  
Women's round neck long sleeve underscrub top  
Sizes: XXS - 5XL, CB: 25.5"  
Color shown: TSEN

Fabric Content:  
46% Recycled Polyester/  
42% Polyester/12% Spandex

PAIRS WELL WITH ALL BARCO BRANDS

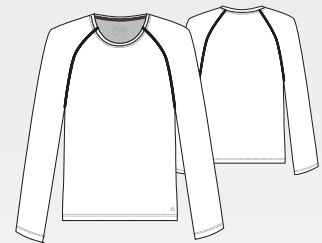


01 Black <sup>G</sup>	10 White <sup>G</sup>
23 Indigo <sup>G</sup>	2330 Grey Heather <sup>G</sup>
2331 Indigo Heather <sup>G</sup>	2422 Fresh Carnation
BOK804G: TSEN Tourmaline Sensation 7/1	

**BOK803 Surge Underscrub**  
Men's round neck raglan long sleeve underscrub top  
Sizes: XS - 5XL, CB: 27.5"  
Color shown: 23 Indigo

Fabric Content:  
46% Recycled Polyester/  
42% Polyester/12% Spandex

PAIRS WELL WITH ALL BARCO BRANDS



01 Black <sup>G</sup>	10 White <sup>G</sup>
23 Indigo <sup>G</sup>	2330 Grey Heather <sup>G</sup>
2331 Indigo Heather <sup>G</sup>	

<sup>G</sup> denotes colors supported for Groups

All Styles Main Fabric  
50% Polyester/43% Recycled Polyester/7% Spandex

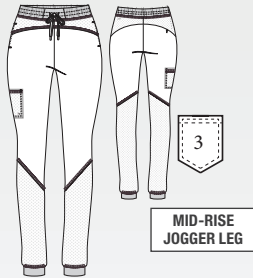


### BOP513 Boost Jogger

3-pocket, double elastic waist with drawcord and perforated blocked detail leg

Sizes: XXS - 5XL, I: 30.5"  
XXSP - XLP, I: 28.5"  
XXST - XLT, I: 33.5"  
Leg opening: 5.125"  
Color shown: 37 Hunter

Knit Accents Content:  
88% Polyester/12% Spandex



01 Black	G
08 New Royal	G
23 Indigo	G
37 Hunter	G
40 Ciel	G
65 Wine	G
114 Cobalt	G
328 Bahama	G
905 Steel	G

Seasonal Color:

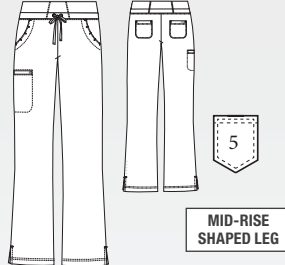
2046 Prestige Pink 7/1

### 5206 Stride Pant

5-pocket, yoga pant with cargo pocket, knit waistband and drawcord

Sizes: XXS - 5XL, I: 31.5"  
XXSP - XLP, I: 29.5"  
XXST - XLT, I: 33.5"  
Leg opening: 8.25"  
Color shown: 65 Wine

Knit Accents Content:  
88% Polyester/12% Spandex



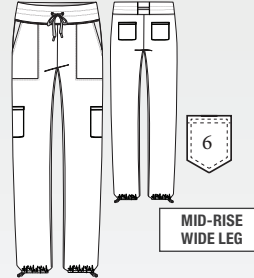
01 Black	G
08 New Royal	G
23 Indigo	G
37 Hunter	G
40 Ciel	G
65 Wine	G
114 Cobalt	G
328 Bahama	G
905 Steel	G

### NEW BOP703 Bounce Pant

6-pocket, drawcord waistband, mid-rise, double cargo pocket and back pocket, adjustable hem wide leg pant

Sizes: XXS - 3XL, I: 30"  
XXSP - XLP, I: 28"  
Leg opening: 10"  
Color shown: 2046 Prestige Pink

LIMITED EDITION SCRUB PANT



01 Black	7/1
----------	-----

Seasonal Color:

2046 Prestige Pink 7/1

### BOP597 Uplift Pant

5-pocket, knit waistband with drawcord, front and back welt pockets, single double cargo pocket, perforated hip, leg panels, and slit hem

Sizes: XXS - 5XL, I: 30"  
XXSP - XLP, I: 28"  
XXST - XLT, I: 32"  
Leg opening: 6.75"  
Color shown: 905 Steel

Knit Accents Content:  
88% Polyester/12% Spandex



01 Black
08 New Royal
23 Indigo
905 Steel

### All Styles Main Fabric

50% Polyester/43% Recycled Polyester/7% Spandex

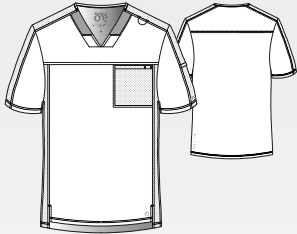
**G** denotes colors supported for Groups





### BOT195 Velocity Top

2-pocket V-neck with inset rib knit, badge loop, shoulder and sleeve panels, on-seam sleeve pocket, inset chest pocket with pen slot, high-low hem top  
 Sizes: XS - 5XL, CB: 29.5"  
 Color shown: 08 New Royal



01 Black	G
08 New Royal	G
23 Indigo	G
37 Hunter	G
40 Ciel	G
65 Wine	G
114 Cobalt	G
328 Bahama	G
905 Steel	G

Seasonal Color:

2046 Prestige Pink	9/1
--------------------	-----

### 0217 Men's Amplify Pant

7-pocket, elastic waist cargo with drawcord, back perforated knee panels and functional zip-fly front with gusseted inseam  
 Sizes: XS - 5XL, I: 32"  
 ST - XLT, I: 34"  
 XSS - 3XLS, I: 30"  
 Leg opening: 7.5"  
 Color shown: 65 Wine



01 Black	G
08 New Royal	G
23 Indigo	G
37 Hunter	G
40 Ciel	G
65 Wine	G
114 Cobalt	G
328 Bahama	G
905 Steel	G

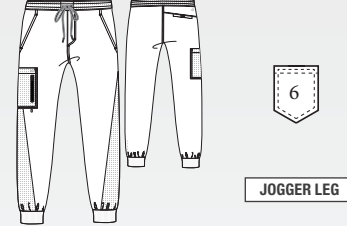
Seasonal Color:

2046 Prestige Pink	9/1
--------------------	-----

### BOP520 Men's Vortex Jogger

6-pocket, drawcord full elastic waistband, zip-fly, single zip double cargo, inside coin pocket and perforated details jogger  
 Sizes: XS - 5XL, I: 30"  
 Leg Opening: 5.25"  
 Color shown: 23 Indigo

Knit Accents Content:  
 94% Polyester/6% Spandex

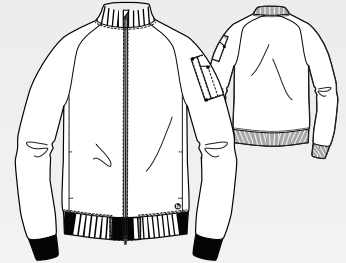


01 Black	G
08 New Royal	G
23 Indigo	G
37 Hunter	G
65 Wine	G
114 Cobalt	G
328 Bahama	G
905 Steel	G

### BOW883 Amplify Warm-Up

3-pocket bomber, knit neck and knit cuffs on raglan sleeves, 2-way zipper with cover, secure zip closure shoulder pocket with pen slots warm-up  
 Sizes: XS - 5XL, CB: 28"  
 Color shown: 01 Black

Knit Accents Content:  
 94% Polyester/6% Spandex



01 Black	G
23 Indigo	G

**G** denotes colors supported for Groups

All Styles Main Fabric  
 50% Polyester/43% Recycled Polyester/7% Spandex





**BARCO**  
**UNIFY** 



**BARCO**  
**UNIFY** 

**PRIMARY FABRIC CONTENT**

71% Polyester

24% Rayon

5% Spandex



**BUT167**  
**Purpose Top**



**BUP601**  
**Purpose Pant**



**BUP647**  
**Union Jogger**



**BUT163**  
**Mission Top**





**BUT167 Purpose Top**

4-pocket, V-neckline, shoulder contrast badge loop, zip pocket PDA, tool strip detail at front pockets

Sizes: *XXS-5XL, CB: 25.5"*  
Color shown: *23 Indigo*

**BUT163 Mission Top**

1-pocket, Henley style neckline, dyed-to-match button placket, welt chest pocket, straight hem, tuck in style top

Sizes: *XXS-5XL, CB: 26.5"*  
Color shown: *905 Steel*

**BUW884 Team Warm-Up**

3-pocket low funnel neckline, princess seams, dyed-to-match zip placket, shoulder contrast badge loop, front pockets, welt sleeve PDA, back waist detail, rib cuff sleeves jacket

Sizes: *XS-5XL, CB: 26"*  
Color shown: *10 White*

**BUP647 Union Jogger**

5-pocket, encased elastic waistband with drawcord, mid-rise, angled welt front pockets, double cargo pocket, back patch pocket, rib knit cuff jogger

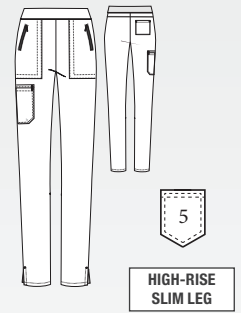
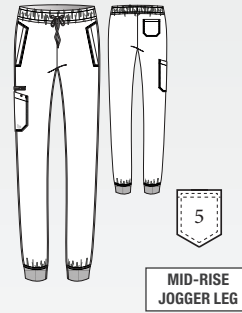
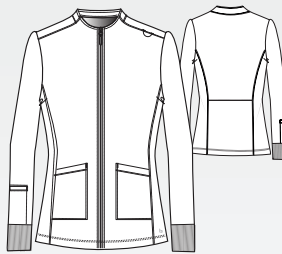
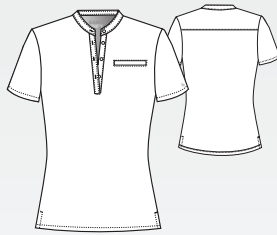
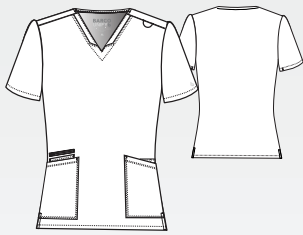
Sizes: *XXS-5XL, I: 29"*  
*XSP-XLP, I: 27"*  
*ST-XLT, I: 31"*  
Leg opening: *4.375"*  
Color shown: *08 New Royal*

**BUP601 Purpose Pant**

5-pocket, high-rise slim pant, flat front waistband with interior drawcord, dyed-to-match zip front pockets, double cargo PDA pocket, back pocket pant

Sizes: *XXS-5XL, I: 30.5"*  
*XXSP-XLP, I: 28.5"*  
*ST-XLT, I: 32.5"*  
Leg opening: *6.75"*  
Color shown: *328 Bahama*

Knit Accents Content:  
94% Polyester/6% Spandex



01 Black

08 New Royal

10 White

23 Indigo

312 Olive

328 Bahama

905 Steel

01 Black

08 New Royal

10 White

23 Indigo

312 Olive

328 Bahama

905 Steel

01 Black

08 New Royal

10 White

23 Indigo

312 Olive

328 Bahama

905 Steel

01 Black

08 New Royal

10 White

23 Indigo

328 Bahama

905 Steel

01 Black

08 New Royal

10 White

23 Indigo

312 Olive

328 Bahama

905 Steel

**All Styles Main Fabric**

71% Polyester/24% Rayon/5% Spandex twill



### BUT153 Rally Top

3-pocket, banded V-neck, shoulder contrast badge loop, dyed-to-match zip chest pocket and patch pocket with pen slots, sleeve pocket, straight hem top

Sizes: XS-5XL, CB: 29"

Color shown: 312 Olive



01 Black

08 New Royal

10 White

23 Indigo

312 Olive

328 Bahama

905 Steel

### BUP602 Rally Jogger

6-pocket elastic waistband with drawcord, front zip-fly, L shaped welt pocket, double single cargo pocket with dyed-to-match zip pocket, back pocket, rib cuff jogger

Sizes: XS-5XL, I: 29"

SS-XLS, I: 27"

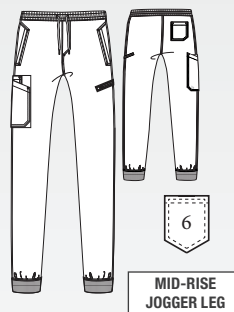
ST-XLT, I: 31"

Leg opening: 4.75"

Color shown: 23 Indigo

Knit Accents Content:

94% Polyester/6% Spandex



01 Black

08 New Royal

10 White

23 Indigo

312 Olive

328 Bahama

905 Steel

All Styles Main Fabric

71% Polyester/24% Rayon/5% Spandex twill





# New LAB COATS

**SKECHERS**  
by Barco

THE COMFORT TECHNOLOGY COMPANY™

**NEW SKC970 FLOURISH**



**SKECHERS**  
by Barco

THE COMFORT TECHNOLOGY COMPANY™

**BARCO**  
SINCE 1929

**GREY'S ANATOMY**  
PROFESSIONAL WEAR BY BARCO  
*Signature*

**GREY'S ANATOMY**  
PROFESSIONAL WEAR BY BARCO

**NEW SKC970**

**Flourish**



**NEW SKC969**

**Emerge**



**NEW SKC970**

**Flourish**



**NEW SKC969**

**Emerge**







Extreme  
Comfort



Soil  
Release



Moisture  
Wicking



2-way  
Stretch

### NEW SKC970 Flourish

Women's 3-pocket 3-button, notch lapel, front princess seams, tablet waist pockets, back belt with center back vent, long sleeve lab coat

Sizes: XXS-5XL

Length\*: 34"

Sleeve length: 24.5"

Buttons: 3

\*Available 7/1



SCAN FOR DETAILS



### NEW SKC969 Emerge

Men's 3-pocket 4-button, notch lapel, tablet waist pockets, back belt with center back vent, long sleeve lab coat

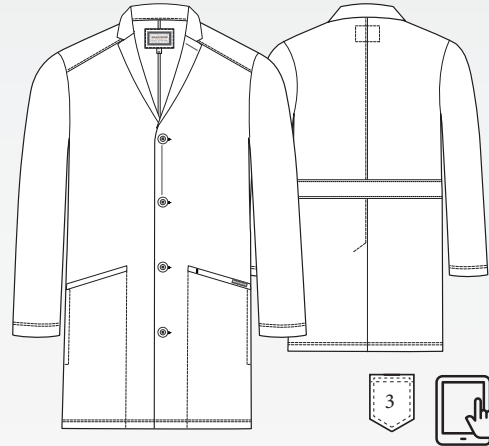
Sizes: XS-5XL

Length\*: 36"

Sleeve length: 26.25"

Buttons: 4

\*Available 7/1

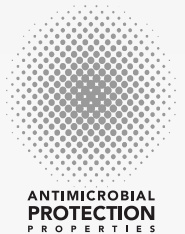


SCAN FOR DETAILS



#### Fabric Content

97% Polyester / 3% Spandex





Soil  
Release



Water  
Resistance



Wrinkle  
Release



UV  
Protection

## BRC961 Merit <sup>G</sup>

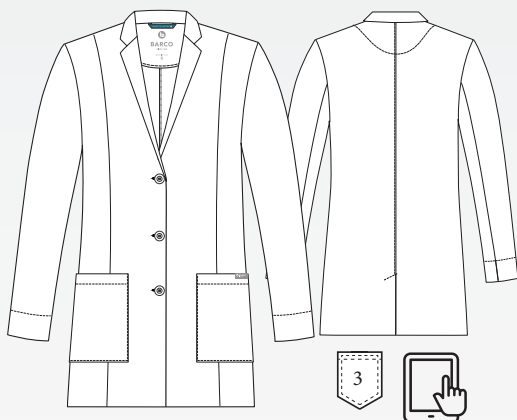
Women's 3-pocket long sleeve modern fit lab coat, notch lapel, front princess seams, top-entry tablet friendly waist pockets with interior pen slots, center back vent, sleeve cuffs with slits, and pocket label

Sizes: XXS-3XL

Length\*: 30"

Sleeve length: 24"-25.25"

Buttons: 3



## BRC966 Grace <sup>G</sup>

Women's 3-pocket long sleeve modern fit lab coat, notch lapel, curved front princess seams, welt chest pocket, top-entry waist pockets, center back vent, sleeve vents, and pocket label

Sizes: XXS-5XL

Length\*: 35"

Sleeve length: 24"-25.25"

Buttons: 3



## BRC965 Verse <sup>G</sup>

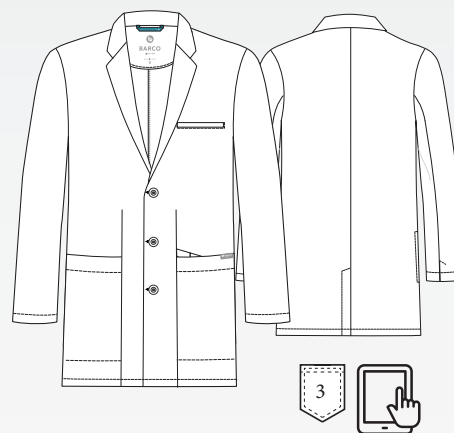
Men's 3-pocket long sleeve lab coat, notch lapel, welt chest pocket, tablet friendly top entry waist pockets with interior pen slots, center back vent, sleeve vents, side slits for pant access, and pocket label

Sizes: S-5XL

Length\*: 38"

Sleeve length: 25.5"-27.5"

Buttons: 3



### Fabric Content

100% Polyester

<sup>G</sup> denotes colors supported for Groups







Wrinkle  
Release



360°  
Spandex Stretch



Soft  
Touch



Durable  
Design

### GNC960 Penelope

Women's 4-pocket long sleeve lab coat, notch lapel, angled front yoke with on-seam pocket and pen slots, half-circle front princess seams with curved on-seam tablet friendly pockets, and back princess seams with vents

Sizes: XXS-5XL

Length: 35"

Sleeve length: 24-25.25"

Buttons: 4

### 2405 Brooke

Women's 3-pocket long sleeve lab coat, round notch collar, 2 front pockets, 1 chest pocket, pen slot, and adjustable back belt

Sizes: XXS-5XL

Length: 32"

Sleeve length: 24"-24.75"

Buttons: 3

### GNC001 Eve

Women's 2-pocket long sleeve lab coat, notch collar, front and back princess seams, double lined, 2 front pockets and 2 back vents

Sizes: XS-3XL

Length: 34"

Sleeve length: 24.25"-24.5"

Buttons: 3

### 2402 Morgan

Women's 2-pocket lab coat with 2 front tablet sized pockets, back sewn down belt, and front and back princess seams

Sizes: XXS-3XL

Length: 35"

Sleeve length: 24"-24.75"

Buttons: 3



### Fabric Content

75% Polyester / 20% Rayon / 5% Spandex Twill

WITH 360° SPANDEX STRETCH





Soil  
Release



Durable  
Design



Soft  
Touch

## GRC962 Derek <sup>G</sup>

Men's 6-pocket long sleeve notch lapel lab coat, welt chest pocket, tablet pocket, angled front body seams with top-entry waist pockets, angled welt hand pockets, angled back yoke seam, extended vent opening at the side seams, and vented sleeve opening with 2-button closure

Sizes: 34-56

Length: 35"

Sleeve length: 26.375"-28.375"

### GRC962L

Sizes: 36-48L, 50-56L

Length\*: 39"

Sleeve length: 27.625"-29.375"

Buttons: 3

## 0914 Noah <sup>G</sup>

Men's 5-pocket lab coat with tablet pockets, inside larger pockets, chest pocket with pen slots center back French seam, and extra length vent

Sizes: 32-56

Length: 37"

Sleeve length: 23.875"-25.875"

### 0914L

Sizes: 36-48L, 50-56L

Length\*: 41"

Sleeve length: 24.875"-26.75"

Buttons: 4

## 4481 Lily <sup>G</sup>

Women's 3-pocket lab coat with princess seamed front, updated rounded collar, inset belt, loose button back belt, and back vent

Sizes: XS-5XL

Length: 34"

Sleeve length: 23.5"-24.875"

Buttons: 4

## 7446 Hannah <sup>G</sup>

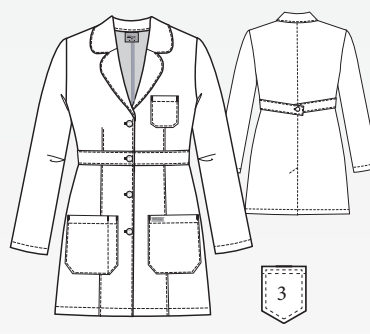
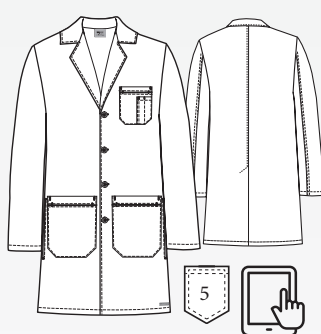
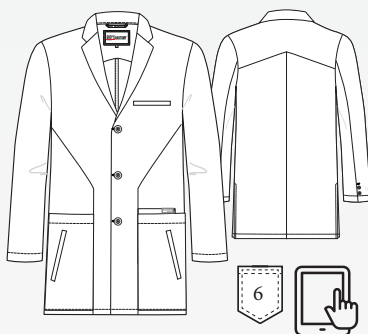
Women's 2-pocket lab coat with waist seam, front and back tapered darts, and back vent

Sizes: XXS-5XL

Length: 31.5"

Sleeve length: 23"-25"

Buttons: 3



## Fabric Content

80% Polyester / 20% Cotton Peached Twill

<sup>G</sup> denotes colors supported for Groups



# New



THE COMFORT TECHNOLOGY COMPANY™

## Fabric Content

93% Polyester / 7% Spandex



**Extreme  
Comfort**







**Soil  
Release**



**Moisture  
Wicking**



**2-way  
Stretch**

Style Name	Length	Sizes	Pockets	Buttons	Tablet Pocket(s)	Description	Sleeve Length	Sketch
<b>Flourish SKC970</b>	34"	XXS-5XL		3	YES	Antimicrobial women's 3-pocket 3-button, notch lapel, front princess seams, tablet waist pockets, back belt with center back vent, long sleeve lab coat. CLASSIC FIT	24.5"	
<b>Emerge SKC969</b>	36"	XS-5XL		4	YES	Antimicrobial men's 3-pocket 4-button, notch lapel, tablet waist pockets, back belt with center back vent, long sleeve lab coat. CLASSIC FIT	26.25"	



# BARCO

SINCE 1929

## Fabric Content

100% Polyester



**Soil  
Release**









**Water  
Resistance**



**Wrinkle  
Release**



**UV  
Protection**

Style Name	Length	Sizes	Pockets	Buttons	Tablet Pocket(s)	Description	Sleeve Length	Sketch
<b>Merit BRC961</b>	30"	XXS-3XL		3	YES	Women's 3-pocket long sleeve modern fit lab coat, notch lapel, front princess seams, top-entry tablet friendly waist pockets with interior pen slots, center back vent, turnback sleeve cuffs with slits, hanging loop, and pocket label. SEMI-FITTED	24.5"	
<b>Grace BRC966</b>	35"	XXS-5XL		3	NO	Women's 3-pocket long sleeve modern fit lab coat, notch lapel, curved front princess seams, welt chest pocket, top-entry waist pockets, center back vent, sleeve vents, hanging loop, and pocket label. SEMI-FITTED	24.5"	
<b>Verse BRC965</b>	38"	S-5XL		3	YES	Men's 3-pocket long sleeve lab coat, notch lapel, welt chest pocket, tablet friendly top entry waist pockets with interior pen slots, center back vent, sleeve vents, side slits for pant access, hanging loop, and pocket label. SEMI-FITTED	26"	



**Fabric Content**

75% Polyester / 20% Rayon / 5% Spandex Twill  
WITH 360° SPANDEX STRETCH



**Wrinkle  
Release**



**360°  
Spandex Stretch**



**Soft  
Touch**



**Durable  
Design**

Style Name	Length	Sizes	Pockets	Buttons	Tablet Pocket(s)	Description	Sleeve Length	Sketch
<b>Penelope GNC960</b>	35"	XXS-XL 2XL-5XL		4	YES	Women's 4-pocket long sleeve lab coat, notch lapel, angled front yoke with on-seam pocket and pen slots, half-circle front princess seams with curved on-seam tablet friendly pockets, and back princess seams with vents. SEMI-FITTED	24-25.25"	
<b>Brooke 2405</b>	32"	XXS-XL 2XL-5XL		3	NO	Women's round notch collar lab coat, with 2 front pockets, 1 chest pocket, pen slot, and back belt detail. SEMI-FITTED	24-25.25" 24-24.75"	
<b>Eve GNC001</b>	34"	XS-XL 2XL-3XL		3	NO	Women's lab coat with 2 front pockets, long sleeve, princess front and back with 2 back vents. SEMI-FITTED	24.25-24.25" 24.25-24.5"	
<b>Morgan 2402</b>	35"	XXS-XL 2XL-3XL		3	YES	Women's lab coat with 2 front pockets, back sewn down belt, and front and back princess seams. SEMI-FITTED	24-25.25" 24.5-24.75"	

**Fabric Content**

80% Polyester / 20% Cotton Peached Twill



**Soil  
Release**



**Durable  
Design**



**Soft  
Touch**

Style Name	Length	Sizes	Pockets	Buttons	Tablet Pocket(s)	Description	Sleeve Length	Sketch
<b>Derek GRC962</b>	35"	34-48 50-56 34-48L 50-56L		4	YES	Men's 6-pocket long sleeve notch lapel lab coat, welt chest pocket, tablet pocket, angled front body seams with top-entry waist pockets, 2 waist welt pockets, tablet pockets, angled back yoke seam, extended vent opening at the side seams, and vented sleeve opening with 2-button closure. RELAXED FIT	26.375-28.375" 27.625-29.375"	
<b>Noah 0914</b>	37"	32-48 50-56 36-48L 50-56L		4	YES	Men's lab coat with tablet pockets, inside larger pockets, chest pocket with pen slots center back French seam, and extra length vent. RELAXED FIT	23.875-25.25" 25.5-26" 24.875-26.25" 26.5-27"	
<b>Lily 4481</b>	34"	XS-XL 2XL-5XL		4	NO	Women's lab coat with princess seamed front, updated rounded collar, inset belt, loose button back belt, and back vent. RELAXED FIT	23.5-24.5" 24.125-24.875"	
<b>Hannah 7446</b>	31.5"	XXS-XL 2XL-5XL		3	NO	Women's lab coat with button tab front pockets, loose back button belt, and back vent. RELAXED FIT	23-24.25" 24.25-25"	

## HOW TO MEASURE

Take all measurements over undergarments using standard measuring tape held in a relaxed straight line.

**Chest/Bust:** Place measuring tape under the arms to measure the distance around the shoulder blades and the fullest part of the bust/chest. Do not hold the tape too tight.

**Waist:** Place measuring tape around the natural waistline.

**Hip:** Stand with feet a few inches apart and measure around the fullest part of your hips wearing your undergarments.

**Inseam:** Measure from the crotch to the desired length of the pant, breaking at the top of the shoe and just above the heel in the back. Appropriate shoes should be worn.



## FIT SIZE GUIDE

BASED ON YOUR BODY MEASUREMENTS

### Women's/Underscrubs/Lab Coats

Size	XXS	XS	S	M	L	XL	2XL	3XL	4XL	5XL
	00	0-2	4-6	8-10	12-14	16-18	20-22	24-26	28-30	32-34
Bust	31-32	33-34	35-36	37-39	40-42	43-45	46-48	50-52	54-56	58-60
Waist	23½-24½	25½-26½	27½-28½	29½-31½	32½-34½	35½-37½	39-41	43-45	47-49	51-53
Hip	34-35	36-37	38-39	40-42	43-45	46-48	49-51	53-55	57-59	61-63

### Men's/Underscrubs

Size	XXS	XS	S	M	L	XL	2XL	3XL	4XL	5XL
	29-31	32-34	35-37	38-40	42-44	46-48	50-52	54-56	58-60	62
Chest	30-32	33-35	36-38	39-41	43-45	47-49	51-53	55-57	59-61	63-65
Waist	23½-25½	26½-28½	29½-31½	32½-34½	36½-38½	40½-42½	44½-46½	48½-50½	52½-54½	56½-58½
Hip	30½-31½	33½-34½	36½-37½	38½-40½	42½-44½	46½-48½	49-51	53-55	57-59	61-63

### Men's Lab Coats

Size	32	34	36	38	40	42	44	46	48	50	52	54	56
Chest	32	34	36	38	40	42	44	46	48	50	52	54	56
Waist	26	28	30	32	34	36	38	40	42	44	46	48	50

Detailed fit guide here



See fit video here



# Marketing, Simplified.

EXPLORE BARCO'S DIGITAL MARKETING RESOURCE CENTER

- **Product Content**

All the data you need to organize Barco products with friendly names and descriptions and merchandise your store's website.

- **High Resolution Photography**

Increased sizes and resolution will enhance your Barco product pages or promotions.

- **Digital Catalogs**

A convenient way to browse seasonal catalogs and choose the product information and imagery you need...all from one convenient asset library.

- **Plus many other useful resources!**

To access, login to  
**B2B.BARCOUNIFORMS.COM/HOME**

## MAP SALE DATES 2025

### **Nurses Appreciation Week**

May 1 - May 14

### **Summer MAP Sale**

TBD

### **Customer Appreciation**

August 1 - August 11

### **October MAP Sale**

TBD

### **Black Friday & Cyber Monday**

November 26 - December 5





In honor of the healthcare professionals who go above and beyond to make a difference in our lives, Barco's Nightingales Foundation provides critical resources to children in need. Since 2020, our Foundation has focused its efforts on Haiti, which has the highest hunger rates in the Western hemisphere. Our two dedicated teams make monthly trips to remote villages near our 7 solar wells, traversing rough terrain to deliver food to 6,000 families in hard-to-reach, underserved areas.

Because of your continued support, we're unwavering in our mission to keep hope alive. Thank you for helping to make a difference.

**BARCO.**  
*Made to Matter*

[barcosnightingales.org](https://barcosnightingales.org)