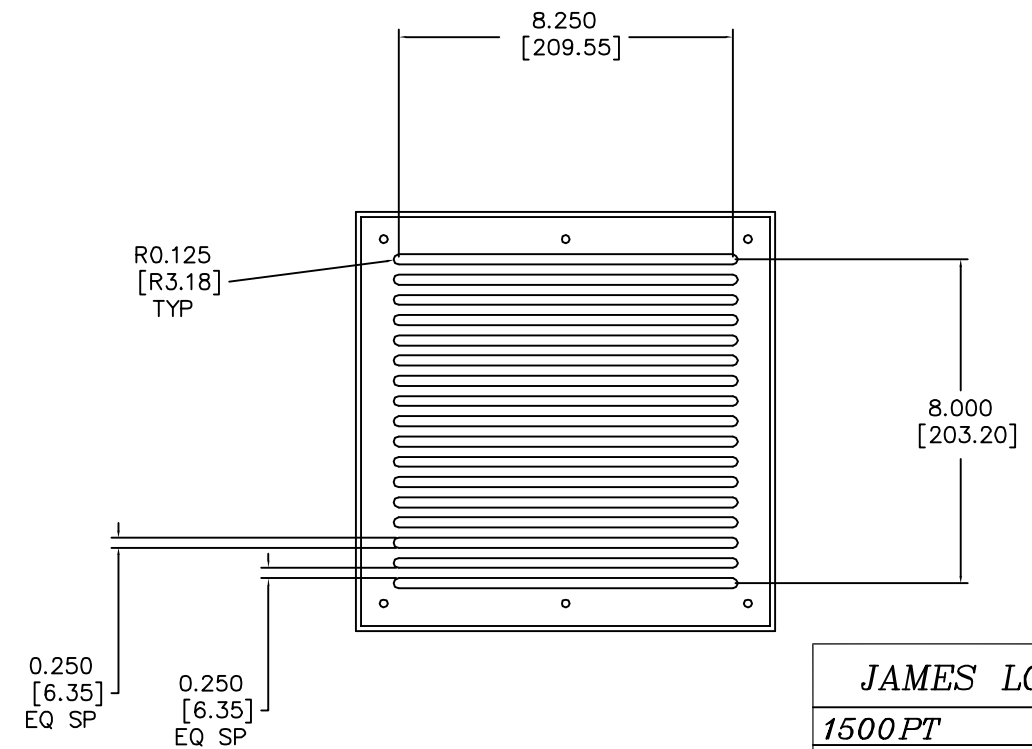
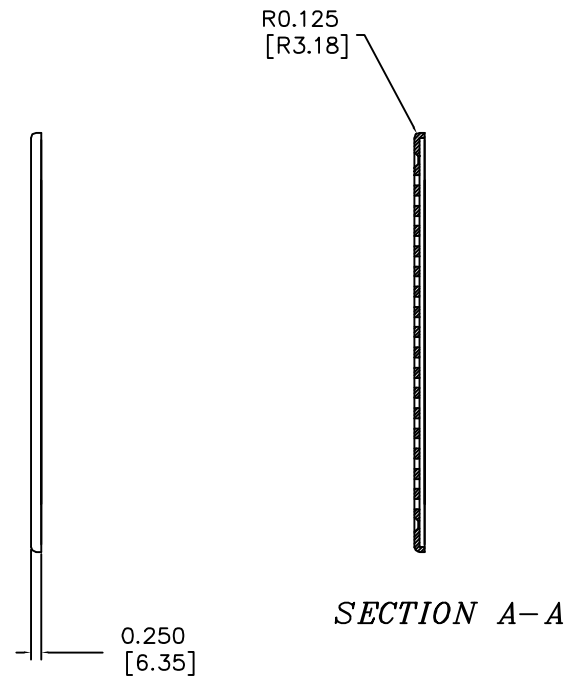
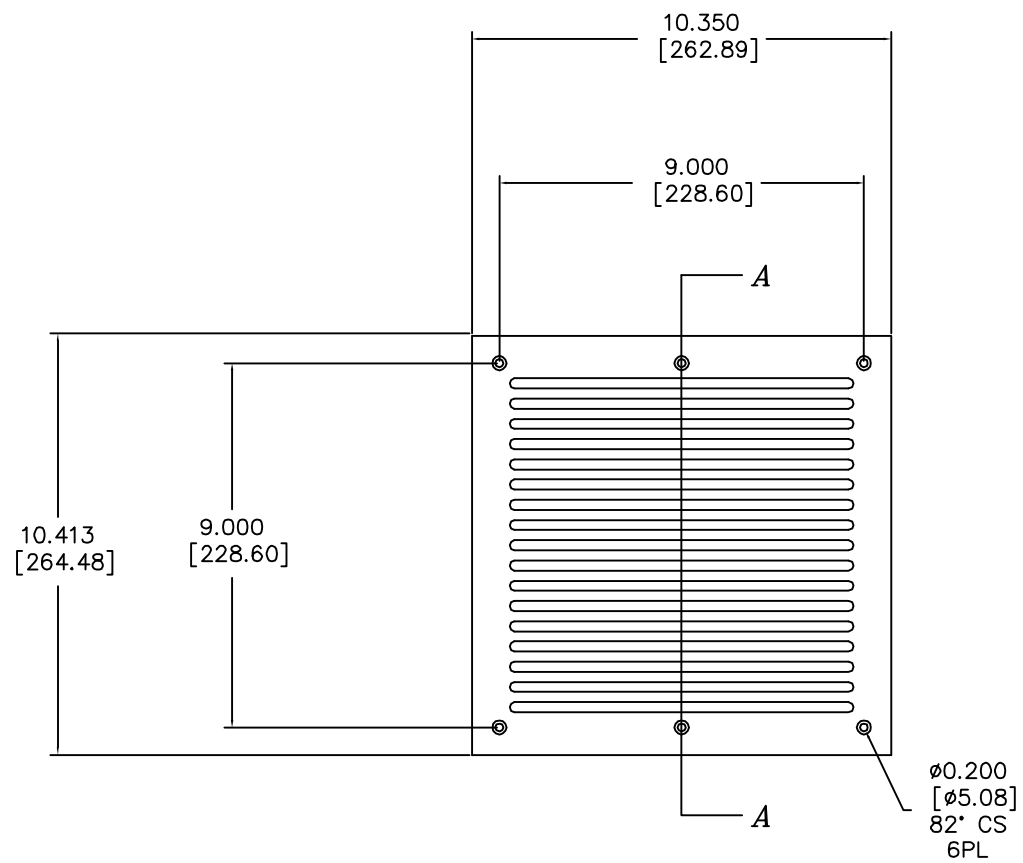
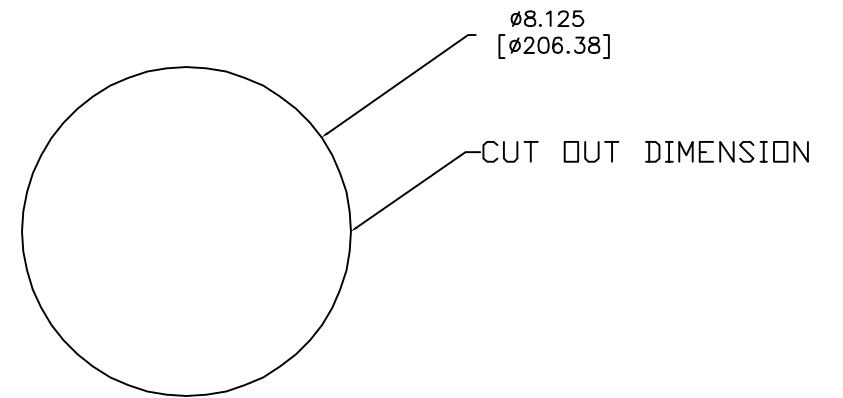
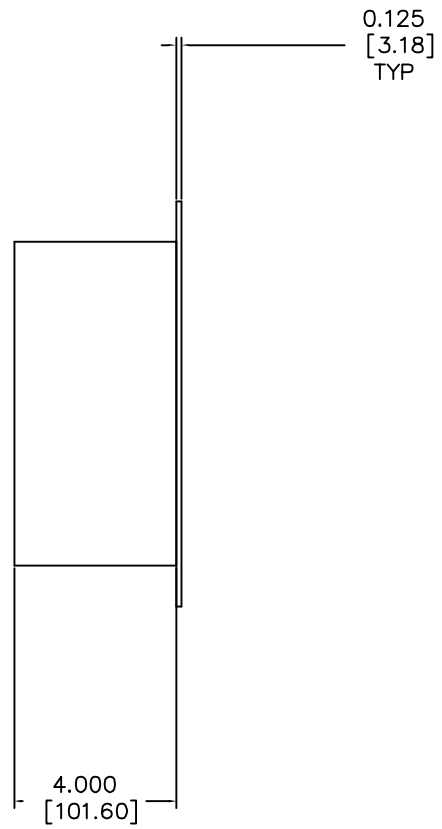
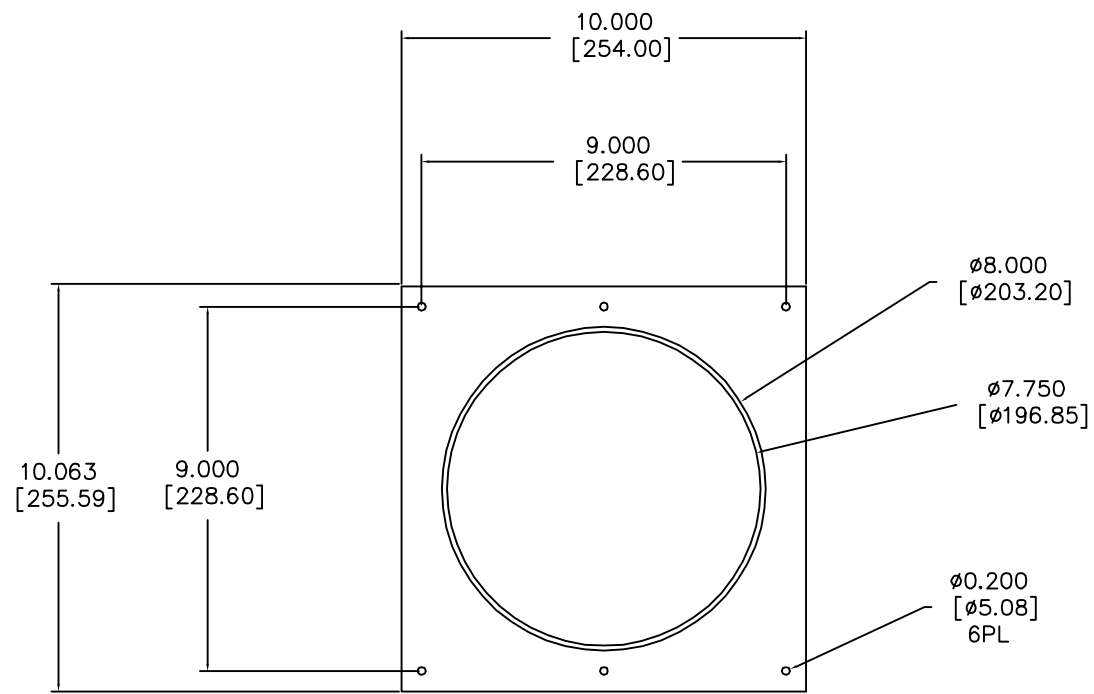


REVISIONS				
ECD	REV.	DESCRIPTION	DATE	APPROVED
	A	RELEASE FOR PRODUCTION	11-02-12	



- NOTES:**
- 1.MATERIAL: 0.125 ALUMINUM  
FINISH: BALCK POWDER COATED  
UNLESS OTHERWISE SPECIFIED
  2. PART TO BE FREE OF COSMETIC BLEMISHES
  3. CLEAN SHARP EDGES

<b>JAMES LOUDSPEAKER</b>	
<b>1500PT</b>	
10X10TDE-KICK	
P/N: TK8S-10X10-4	DWR #: 121102-B03
REVISED BY:	
DRAWN BY: M. PARK	FILE:
DATE: 11-02-12	SCALE:
APPROVED:	
DRAFTING APPROVED:	
<b>DO NOT SCALE DRAWING</b>	
<b>DRAWING NOT TO BE USED FOR CNC</b>	
TOLERANCES: ANG: ± = .5° FRACT. ± = 1/32	
DECIMALS: .XX ± = .01 .XXX ± = .005	
<b>REVISION: A</b>	SHEET 1 OF 2