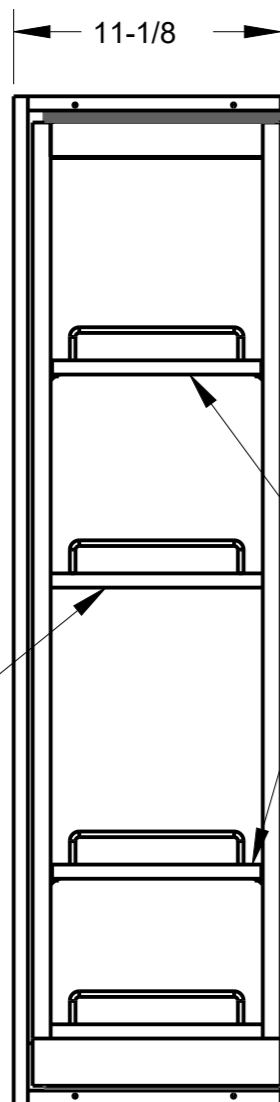


8 7 6 5 4 3 2 1

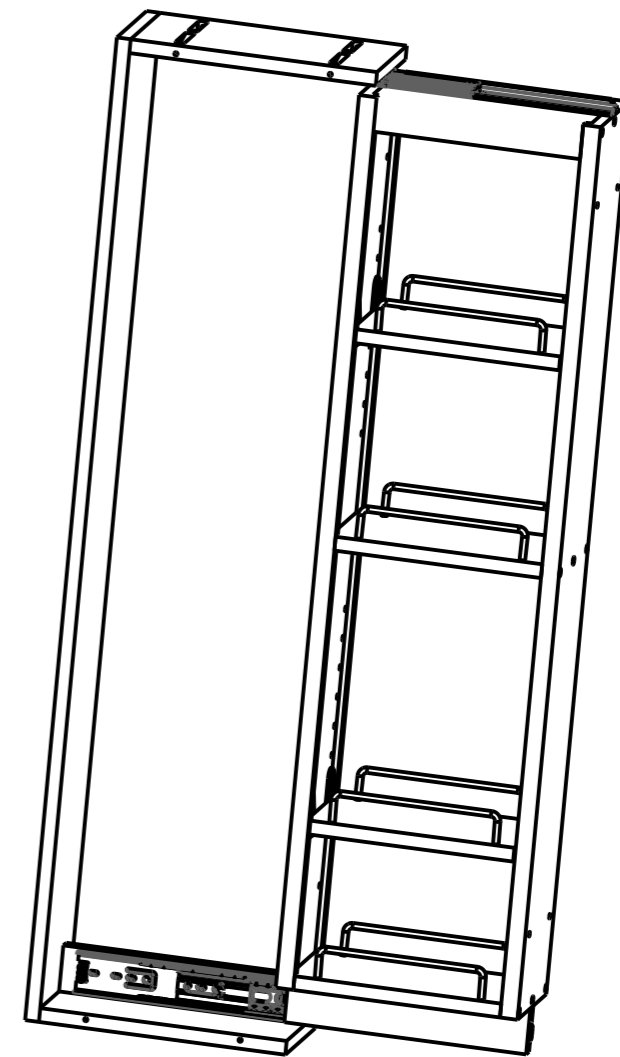
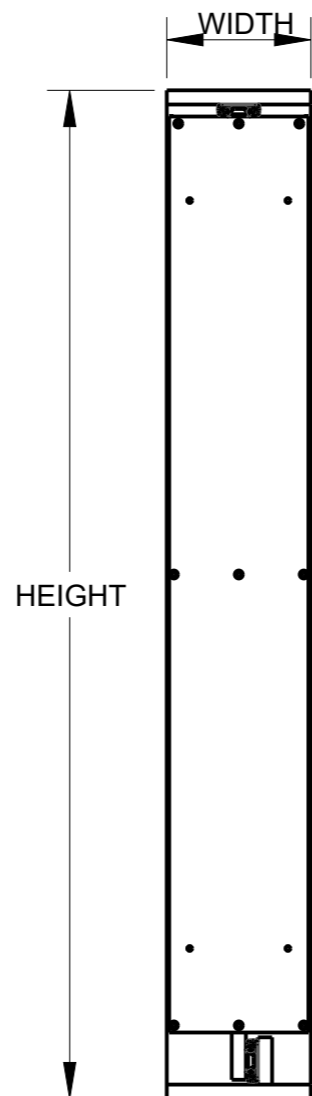
F
E
D
C
B
A

F
E
D
C
B
A

FIXED SHELF
FOR WFPO342
AND WFPO642
ONLY
(QTY: 1)



ADJUSTABLE
SHELVES FOR
ALL VARIANTS
(QTY: 2)



HR ITEM NUMBER	PRODUCT DESCRIPTION	HEIGHT	WIDTH
WFPO330	WALL FILLER PULLOUT, 3"x30"x11-1/8"	30	3
WFPO336	WALL FILLER PULLOUT, 3"x36"x11-1/8"	36	3
WFPO342	WALL FILLER PULLOUT, 3"x42"x11-1/8"	42	3
WFPO630	WALL FILLER PULLOUT, 6"x30"x11-1/8"	30	6
WFPO636	WALL FILLER PULLOUT, 6"x36"x11-1/8"	36	6
WFPO642	WALL FILLER PULLOUT, 6"x42"x11-1/8"	42	6



HARDWARE RESOURCES RESERVES THE RIGHT TO CHANGE SPECIFICATIONS WITHOUT NOTICE. IN CASE OF A DISCREPANCY, ACTUAL PART GEOMETRY SUPERSEDES THIS DOCUMENT.

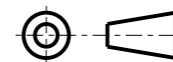
THE INFORMATION CONTAINED WITHIN THIS DRAWING IS THE SOLE PROPERTY OF HARDWARE RESOURCES INC. ANY REPRODUCTION IN PART OR WHOLE WITHOUT WRITTEN PERMISSION OF HARDWARE RESOURCES INC. IS PROHIBITED.

DOCUMENT STATUS **Released**

UNLESS OTHERWISE SPECIFIED DIMENSIONS ARE IN INCHES (IN)

MATERIAL: WHITE BIRCH, PLYWOOD FINISH: UV CLEAR

THIRD ANGLE PROJECTION



DATE: 25APR2024

DESCRIPTION

WALL FILLER PULLOUT

DRAWING NUMBER
WFPO

REV
A

SIZE
A3

SCALE
0,125

SHEET
1 / 1

8 7 6 5 4 3 2 1