

USB to S-Video/Composite Video Capture Cable with Audio

SVID2USB22



*actual product may vary from photo

DE: Bedienungsanleitung - de.startech.com

FR: Guide de l'utilisateur - fr.startech.com

ES: Guía del usuario - es.startech.com

IT: Guida per l'uso - it.startech.com

NL: Gebruiksaanwijzing - nl.startech.com

PT: Guia do usuário - pt.startech.com

For the most up-to-date information, please visit: www.startech.com

FCC Compliance Statement

This equipment has been tested and found to comply with the limits for a Class B digital device, pursuant to part 15 of the FCC Rules. These limits are designed to provide reasonable protection against harmful interference in a residential installation. This equipment generates, uses and can radiate radio frequency energy and, if not installed and used in accordance with the instructions, may cause harmful interference to radio communications. However, there is no guarantee that interference will not occur in a particular installation. If this equipment does cause harmful interference to radio or television reception, which can be determined by turning the equipment off and on, the user is encouraged to try to correct the interference by one or more of the following measures:

- Reorient or relocate the receiving antenna.
- Increase the separation between the equipment and receiver.
- Connect the equipment into an outlet on a circuit different from that to which the receiver is connected.
- Consult the dealer or an experienced radio/TV technician for help.

Use of Trademarks, Registered Trademarks, and other Protected Names and Symbols

This manual may make reference to trademarks, registered trademarks, and other protected names and/or symbols of third-party companies not related in any way to StarTech.com. Where they occur these references are for illustrative purposes only and do not represent an endorsement of a product or service by StarTech.com, or an endorsement of the product(s) to which this manual applies by the third-party company in question. Regardless of any direct acknowledgement elsewhere in the body of this document, StarTech.com hereby acknowledges that all trademarks, registered trademarks, service marks, and other protected names and/or symbols contained in this manual and related documents are the property of their respective holders.

Table of Contents

Introduction	1
Packaging Contents	1
System Requirements.....	1
Installation	2
Hardware Installation	2
Driver Installation.....	2
Specifications	4
Technical Support	5
Warranty Information	5

Introduction

The StarTech.com SVID2USB22 USB 2.0 S-Video/Composite video Capture Cable lets you connect devices that output S-Video or Composite video to a computer, through an available USB 2.0 port. The cable also features two channel RCA stereo audio inputs, that let you capture the audio that accompanies the S-Video or Composite video signal. Support for TWAIN drivers to enable various third party video capture software, the capture cable offers real time MPEG1 and MPEG2 recording.

Packaging Contents

- 1 x SVID2USB22 video capture cable
- 1 x Driver Installation CD
- 1 x Software Installation CD
- 1 x Instruction Manual

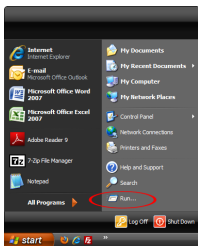
System Requirements

- USB 2.0 enabled computer system with available port
- Microsoft® Window® XP(32-bit), Vista/7 (32/64-bit)

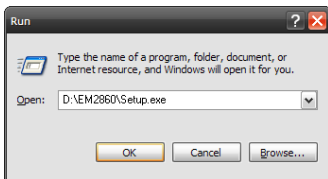
Installation

Driver Installation

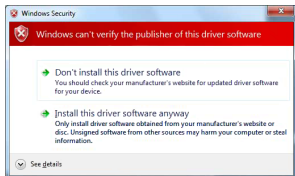
1. Please insert the included Driver CD into the CD-ROM Drive.
2. At the Windows desktop, click the Start button, then “Run”. If this option is not available from the Start menu, press and hold the Windows key (⊞) on the keyboard and press “R”.



3. Type “D:\EM2860\Setup.exe” into the Run window and click the OK button. (Change D: to match your CD-ROM drive letter)



4. The Driver install program will be running. Proceed through any prompts as necessary. If a Windows Security dialog window appears, click the “Install this driver software anyway” or “Continue Anyway” option to proceed.

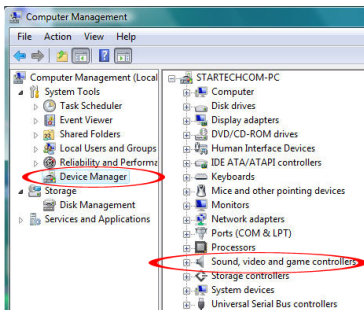
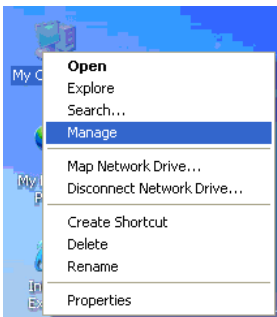


5. Restart Windows to complete the driver installation.

- Once the computer has booted into Windows, plug the SVID2USB22 adapter cable into an available USB2.0 port.
- Windows should automatically detect new hardware and begin to load the drivers.
- If a Windows Security dialog window appears, click the "Install this driver software anyway" or "Continue Anyway" option to proceed.
- Connect the video source to the video capture adapter either through S-Video (black) or composite video (yellow) using the appropriate cables. Stereo audio (red/white) can also be connected to the adapter.

Verifying Installation

From the main desktop, right-click on "My Computer" ("Computer" in Vista/7), then select Manage. In the new Computer Management window, select Device Manager from the left window panel.



Click on the "+" (plus sign) in front of "Sound, video and game controllers", "AV Grabber" should be displayed under this category.



Software Installation (Optional)

To install Ulead® VideoStudio® for use as video capture and editing software, follow these installation steps. If other video capture/editing software is to be used, then this is not necessary.

1. Place the Ulead Video Studio SE CD into a CD-ROM drive and setup should launch automatically. If setup does not launch, use Windows Explorer to navigate to appropriate CD-ROM drive and run the Setup.
2. The installation wizard will start the installation process, click OK to start installing.

NOTE: The serial installation key is included on the back of the CD sleeve.

3. Follow the installation wizard and complete the steps to finish Ulead VideoStudio 11 SE DVD software.

NOTE: For any further assistance with installation, how-to-use or troubleshooting VideoStudio problems, please contact the developer of the software, Ulead (www.ulead.com).

Specifications

Host Interface	USB 2.0
Connectors	1 x USB type A male 1 x RCA composite (yellow) female 2 x RCA stereo audio (red/white) female 1 x S-Video female (black) female
LEDs	1 x Power
Supported Video Systems	NTSC, PAL, SECAM
Maximum Video Resolution	720x480 (NTSC), 720x576 (PAL)
Supported Video Encoding	MPEG1, MPEG2
Operating Temperature	0°C ~ 50°C (32°F ~ 122°F)
Storage Temperature	-20°C ~ 60°C (-4°F ~ 140°F)
Humidity	5% ~ 85% RH
Dimensions	92.0mm x 33.0mm x 11.0mm
Weight	60g
Compatible Operating Systems	Windows XP (32-bit), Vista/7 (32/64-bit)

Technical Support

StarTech.com's lifetime technical support is an integral part of our commitment to provide industry-leading solutions. If you ever need help with your product, visit www.startech.com/support and access our comprehensive selection of online tools, documentation, and downloads.

Warranty Information

This product is backed by a one year warranty.

In addition, StarTech.com warrants its products against defects in materials and workmanship for the periods noted, following the initial date of purchase. During this period, the products may be returned for repair, or replacement with equivalent products at our discretion. The warranty covers parts and labor costs only. StarTech.com does not warrant its products from defects or damages arising from misuse, abuse, alteration, or normal wear and tear.

Limitation of Liability

In no event shall the liability of StarTech.com Ltd. and StarTech.com USA LLP (or their officers, directors, employees or agents) for any damages (whether direct or indirect, special, punitive, incidental, consequential, or otherwise), loss of profits, loss of business, or any pecuniary loss, arising out of or related to the use of the product exceed the actual price paid for the product. Some states do not allow the exclusion or limitation of incidental or consequential damages. If such laws apply, the limitations or exclusions contained in this statement may not apply to you.

Hard-to-find made easy. At StarTech.com, that isn't a slogan. It's a promise.

StarTech.com is your one-stop source for every connectivity part you need. From the latest technology to legacy products — and all the parts that bridge the old and new — we can help you find the parts that connect your solutions.

We make it easy to locate the parts, and we quickly deliver them wherever they need to go. Just talk to one of our tech advisors or visit our website. You'll be connected to the products you need in no time.

Visit www.startech.com for complete information on all StarTech.com products and to access exclusive resources and time-saving tools.

StarTech.com is an ISO 9001 Registered manufacturer of connectivity and technology parts. StarTech.com was founded in 1985 and has operations in the United States, Canada, the United Kingdom and Taiwan servicing a worldwide market.