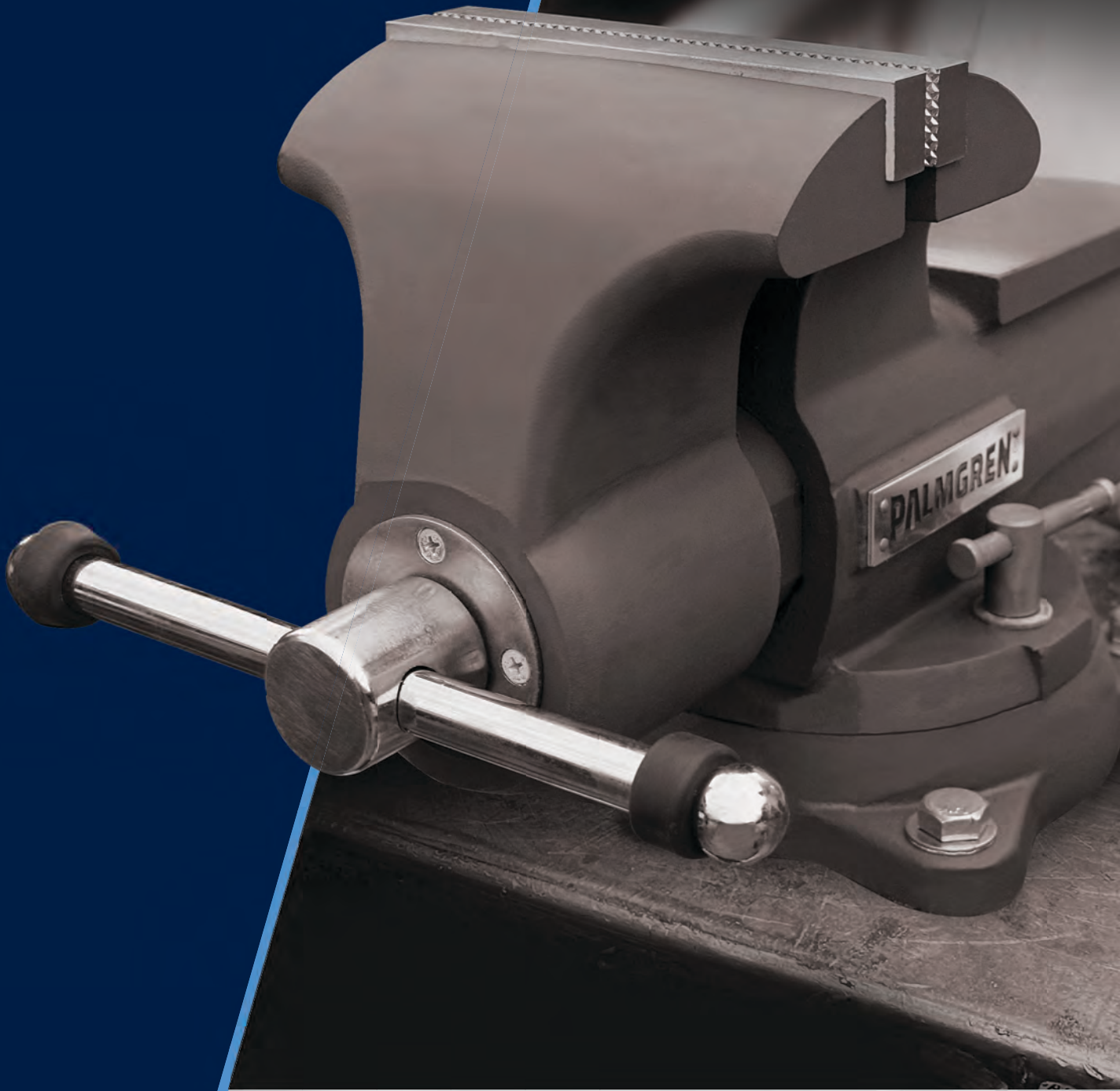


# PALMGREN®

**EMBRACE  
THE WORK®**



**WORKHOLDING AND SHOP  
EQUIPMENT CATALOG**



# PALMGREN BUILDS THE HIGHEST QUALITY INDUSTRIAL PRODUCTS FOR YOUR USE.

*Our reputation for quality workholding tools and equipment is based on leadership and innovation. Our products offer you more design features than any others. If you want the best tool for the job and the best value for your money – specify Palmgren.*

## QUALITY

*Palmgren products are built to meet high quality standards, to assure you better, safer use and greater convenience while providing longer service.*

## VALUE

*When you get the best at a competitive price, you get value. The extra features and performance built into our products make them the best buy for your money.*

### SPECIAL FEATURES *Throughout the catalog, various symbols are used to help you identify key points.*



#### UNRIVALED

*Our very best premium vises, second to none*



#### EXCEPTIONAL

*Our better vises with superior performance features*



#### PREFERRED

*Our good line up of vises with desirable features and great value*



#### FAVORED

*Our versatile line up of all-around vises at a modest price*



#### EXCLUSIVE

*Our leadership products only available from Palmgren*

# **PALMGREN®** **WARRANTY**

## **INDUSTRY LEADING WARRANTY AND SERVICE**

All arbor presses, clamps, positioning tables, bench vises, machine vises, and vise accessories have a lifetime warranty.

All bench grinders, buffers, drill presses, finishing machines, lathes, milling machines, sawing machines, tapping machines, turning machines, h-frame presses and stands, and metal forming equipment have a 3 year warranty.

All copper jaw caps, jack screws, and work stands have a 1 year warranty.

See our warranty page at [palmgren.com/palmgren-warranty](http://palmgren.com/palmgren-warranty)

**EMBRACE  
THE WORK®**

*At Palmgren we build tools for those who choose to work. Tools that were made to be used, that flex endless muscle, take a beating and ask for more. Tools that will stand by you on your daily grind. Tools that help you Embrace your Work.*



# **PALMGREN®**

Selecting the right vise to meet your requirements requires careful assessment of the performance objectives outlined below. The following chart is a helpful tool to assist you in identifying the model of vise that best fits a specific application. Follow these steps to help select the right operation and machine. Then determine the application or use that best fits your specific requirement. Palmgren has the greatest selection of vises to assist you in adapting your existing equipment to handle a wider variety of operations.



		VISE SPECS			VISE TYPE				
		Jaw Width	Jaw Opening	Vise Material	Machinist	Combination Pipe & Bench	Mechanics	Workshop/Utility	Multi-Purpose
MODEL	DESCRIPTION								
<b>Utility Bench Vise</b>									
9629684	4" Utility Bench Vise	4"	4"	80,000 PSI SG Ductile Iron				•	
9629686	6" Utility Bench Vise	6"	6"	80,000 PSI SG Ductile Iron				•	
9629688	8" Utility Bench Vise	8"	8"	80,000 PSI SG Ductile Iron				•	
9629680	10" Utility Bench Vise	10"	10"	80,000 PSI SG Ductile Iron				•	
<b>Machinist Bench Vises</b>									
9629695	5" Machinist Bench Vise	5"	5"	80,000 PSI SG Ductile Iron	•				
9629696	6" Machinist Bench Vise	6"	6"	80,000 PSI SG Ductile Iron	•				
9629698	8" Machinist Bench Vise	8"	8"	80,000 PSI SG Ductile Iron	•				
9629692	12" Machinist Bench Vise	12"	12"	80,000 PSI SG Ductile Iron	•				
<b>Pro Machinist Bench Vises</b>									
9629784	4" Pro Machinist Bench Vise	4"	5"	80,000 PSI SG Ductile Iron	•				
9629785	5" Pro Machinist Bench Vise	5"	6-1/4"	80,000 PSI SG Ductile Iron	•				
9629786	6" Pro Machinist Bench Vise	6"	7"	80,000 PSI SG Ductile Iron	•				
<b>Industrial Duty Bench &amp; Pipe Vises</b>									
9629774	4" Industrial Duty Bench & Pipe Vise	4"	4-1/4"	80,000 PSI SG Ductile Iron		•			
9629775	5" Industrial Duty Bench & Pipe Vise	5"	5-1/2"	80,000 PSI SG Ductile Iron		•			
9629776	6" Industrial Duty Bench & Pipe Vise	6"	6-1/2"	80,000 PSI SG Ductile Iron		•			
9629777	8" Industrial Duty Bench & Pipe Vise	8"	8-3/4"	80,000 PSI SG Ductile Iron		•			
<b>Multi-Jaw Rotating Bench Vises</b>									
9629503	5" Multi-Jaw Bench Vise	5"	4"	80,000 PSI SG Ductile Iron					•
9629504	6" Multi-Jaw Bench Vise	6"	6"	80,000 PSI SG Ductile Iron					•
<b>Combination Pipe &amp; Bench Vises</b>									
9629744	4" Pipe & Bench Vise	4"	5"	65,000 PSI Ductile Iron			•		
9629745	5" Pipe & Bench Vise	5"	6"	65,000 PSI Ductile Iron			•		
9629746	6" Pipe & Bench Vise	6"	7"	65,000 PSI Ductile Iron			•		
9629748	8" Pipe & Bench Vise	8"	8.25"	65,000 PSI Ductile Iron			•		
9629795	5" Hi-Vis Pipe and Bench Vise	5"	6"	65,000 PSI Ductile Iron			•		
9629796	6" Hi-Vis Pipe and Bench Vise	6"	7"	65,000 PSI Ductile Iron			•		
9629755	5.5" Pipe & Bench Vise	5.5"	5.75"	65,000 PSI Ductile Iron		•			
9629756	6.5" Pipe & Bench Vise	6.5"	8.5"	65,000 PSI Ductile Iron		•			
9629758	8.5" Pipe & Bench Vise	8.5"	9"	65,000 PSI Ductile Iron		•			
<b>Specialty Bench Vises</b>									
9629773	4" Ball Bench Vise	4"	6"	65,000 PSI Ductile Iron				•	
9629772	4" Rotating Jaw Ball Vise	4"	6"	65,000 PSI Ductile Iron				•	

## High-Strength Ductile Iron Construction

At the heart of every Palmgren vise is high-strength ductile iron, crafted for real-world toughness. Its nodular graphite structure delivers lasting strength, stability, and precision under heavy load. That's the kind of strength that's built our reputation for lifetime precision.

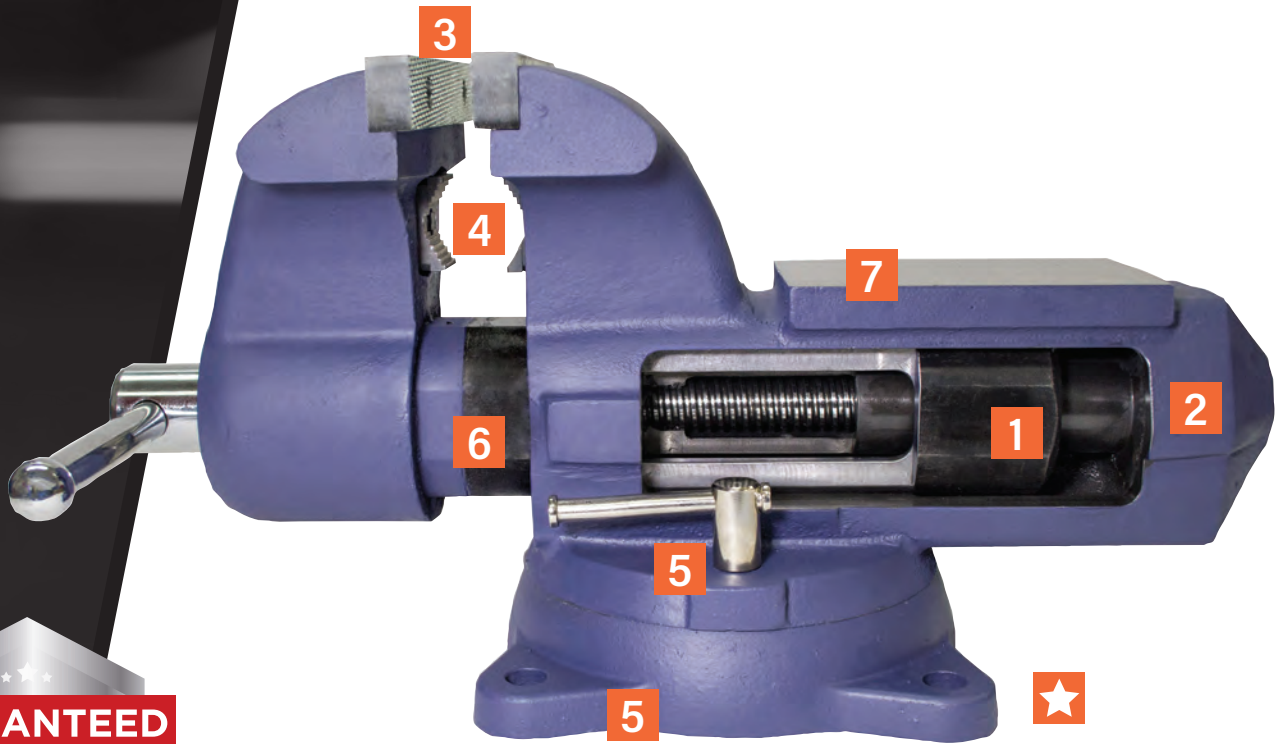
PRIMARY APPLICATION			WORKPIECE			PART TYPES				FEATURES		LEAD SCREW DESIGN	
Light Duty	Medium Duty	Heavy Duty	Small	Medium	Large	Square	Rectangular	Structural	Round	Swivel Base	Anvil	U-Channel	Straight Line Pull
•			•			•	•	•	•	•	•	•	
•				•		•	•	•	•	•	•	•	
•					•	•	•	•	•	•	•	•	
•					•	•	•	•	•	•	•	•	
	•		•			•	•	•		•	•	•	
	•			•		•	•	•		•	•	•	
	•				•	•	•	•		•	•	•	
		•			•	•	•	•		•	•	•	
	•		•			•	•	•		•	•		•
	•		•			•	•	•		•	•		•
	•			•		•	•	•		•	•		•
		•	•			•	•	•	•	•	•	•	
		•	•			•	•	•	•	•	•	•	
		•		•		•	•	•	•	•	•	•	
		•			•	•	•	•	•	•	•	•	
		•	•			•	•	•	•	•	•	•	
		•		•		•	•	•	•	•	•	•	
		•	•			•	•	•	•	•	•	•	
		•			•	•	•	•	•	•	•	•	
		•	•			•	•	•	•	•	•	•	
		•		•		•	•	•	•	•	•	•	
		•	•			•	•	•	•	•	•	•	
		•			•	•	•	•	•	•	•	•	
•			•			•	•	•	•			•	
•			•			•	•	•	•			•	

# HEAVY DUTY COMBINATION BENCH & PIPE VISES

Palmgren's new patented bench vise looks different for a reason. It is built different than all other vises. The unique shaped body houses the straight-line pull, super strong power tunnel that assures that the spindle and nut will never wear out. The entire vise is made of 65,000 PSI ductile iron - coupled with our exclusive manufacturing process of the body and nut - delivers a vise that is 50% stronger than all gray iron vises and 20% stronger than competitive ductile iron vises. Palmgren vises are built for performance and endurance to handle any of your workholding requirements.

**EMBRACE  
THE WORK®**

**PALMGREN**



**GUARANTEED SALE!**

Any Bench Vise can be returned within 30 days of purchase

- 1** Straight line power tunnel design - unbreakable spindle & nut with increased clamping power
- 2** Enclosed construction keeps lubrication in & contaminants out, making it ideal for both indoor & outdoor use
- 3** Hardened replaceable steel jaw inserts ensures positive hold
- 4** Hardened replaceable steel self-centering pipe jaws hold round materials securely.
- 5** Locking swivel base with double lockdowns for non-slip hold in any position
- 6** Precision side bar machined for a .002" fit
- 7** Oversized machined anvil provides structural integrity and consistent properties of toughness and hardness for greater working area
- ★** **ULTRA STRONG**, the entire vise is made of 65,000 PSI ductile iron - coupled with our exclusive manufacturing process of the body and nut - delivers a vise that is 50% stronger than all gray iron vises and 20% stronger than competitive ductile iron vises.

Extra deep throat gives you more working room where it counts

LIFETIME WARRANTY

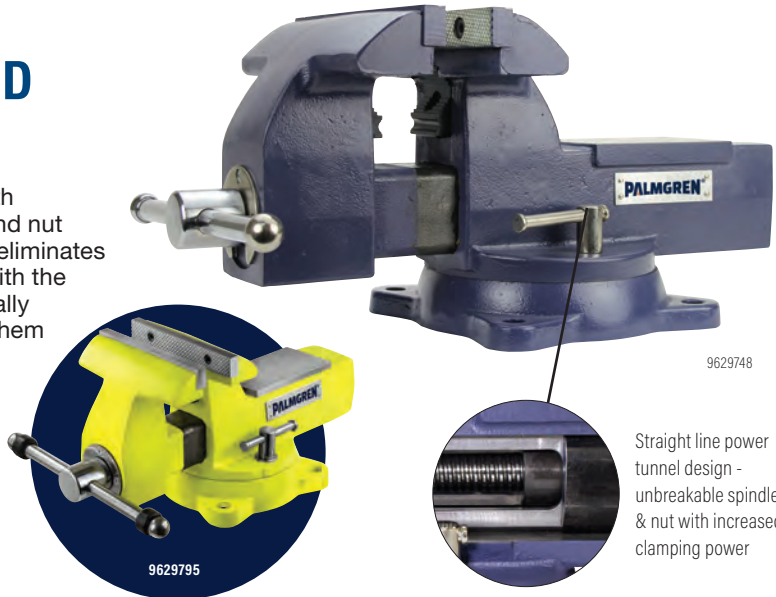


Item #	Jaw Width	Jaw Opening	Pipe Jaw Capacity	Clamping Force (max)	Anvil Length x Width	Overall Dimensions	Weight
9629758	8-1/2"	9"	1/4" – 3-1/2"	74,000 PSI	3-5/8" x 7"	21" x 12" x 10"	102 lbs.
9629756	6-1/2"	8-1/2"	1/4" – 3-1/2"	65,000 PSI	3-1/2" x 5-3/4"	18" x 10" x 10"	73 lbs.
9629755	5-1/2"	8-1/2"	1/4" – 3-1/2"	65,000 PSI	3-1/2" x 5-3/4"	16" x 10" x 10"	68 lbs.

## COMBINATION BENCH AND PIPE VISE

This vise houses a super strong power tunnel with straight-line pull that assures a lifetime spindle and nut never to wear out. A precision fit of the slide bar eliminates side play and jaw wobble even when clamping with the jaws wide open. The vise spindle and nut are totally enclosed in a square tube casting that protects them from dust, chips and moisture, keeping them lubricated for life.

- 65,000 PSI ductile iron construction
- 70% stronger than the competitive u-shaped styles
- Sealed construction
- Straight line pull power tunnel design
- Precision fit slide bar to 0.003"
- Replaceable serrated steel jaws
- Replaceable pipe jaws
- Large anvil
- 360° swivel base with dual lock downs and 4 point mounting holes



Straight line power tunnel design - unbreakable spindle & nut with increased clamping power

Item #	Jaw Width	Jaw Opening	Throat Depth	Pipe Jaw Capacities	Weight
9629744	4"	5"	3-1/2"	1/4 - 2"	31 lbs.
9629745	5"	6"	3-1/2"	1/4 - 2-1/2"	38 lbs.
9629746	6"	7"	3-3/4"	1/4 - 3-1/2"	43 lbs.
9629748	8"	8-1/4"	4-3/4"	1/4 - 3-1/2"	62 lbs.



High Visibility					
9629795	5"	6"	3-1/2"	1/4 - 2-1/2"	38 lbs.
9629796	6"	7"	3-3/4"	1/4 - 3-1/2"	43 lbs.

## MULTI-JAW ROTATING BENCH VISE

Probably the most versatile vise you will ever own.

- Vise swivels 360° on the base and locks in any position
- 80,000 PSI SG ductile iron construction
- The jaws rotate 360° and lock in any position
- Trapezoidal-thread lead screw
- Anvil on the vise provides a convenient work surface
- Replaceable hardened steel jaws
- Features parallel jaws, pipe jaws and V-jaws
- Bolt lugs on base for secure mounting



Item #	Jaw Width	Max. Jaw Opening	Max. V-Jaw Opening	Throat Depth	Max. Pipe Jaw Capacity	Length	Height	Weight
9629503	5-1/8"	4"	4-1/2"	3-1/2"	3-1/2"	16-1/2"	10-5/8"	52.2 lbs.
9629504	6"	6"	6-1/2"	3-1/2"	6"	16-1/2"	7-3/4"	57.1 lbs.



## INDUSTRIAL DUTY COMBINATION BENCH & PIPE VISES

Palmgren's high-quality industrial duty vises are made from SG ductile cast iron which offers a remarkable strength to weight ratio. Built to handle some of the toughest applications, these vises are guaranteed unbreakable and have all the features necessary to hold a workpiece securely in place allowing work to be performed on it.

- 80,000 PSI SG ductile iron construction
- Replaceable serrated steel jaws
- Pipe jaws
- Large, hardened anvil
- Swivel base
- Adjustable, precision fit slide bar assure constant, smooth functioning movement



9629774



Item #	Jaw Width	Jaw Opening	Clamping Force Max	Anvil Dimensions	Overall Dimensions	Weight
9629774	4"	4-1/4"	5060 lbs.	3" x 2"	12" x 6" x 6"	19.4 lbs.
9629775	5"	5-1/2"	5720 lbs.	3" x 3"	14" x 7" x 7"	26.4 lbs.
9629776	6"	6-1/2"	7480 lbs.	3-1/2" x 3-1/2"	18" x 8" x 8-1/2"	40.7 lbs.
9629777	8"	8-3/4"	8580 lbs.	4" x 4"	21" x 10" x 9"	57.2 lbs.

## PRO MACHINIST VISES

Palmgren's Pro Series machinist vises are built for performance and endurance on the job. Constructed of high tensile malleable cast iron and machined to close tolerances to assure secure clamping at any opening. Their compact straight line pull design assures that the spindle and nut will never wear out.

- 80,000 PSI SG ductile iron construction
- Straight line pull power tunnel
- Precision machined slide bar
- Hardened replaceable steel jaws
- Swivel base with dual lockdowns
- Anvil



9629784



Item #	Jaw Width	Jaw Opening	Clamping Force Max	Anvil Dimensions	Overall Dimensions	Weight
9629784	4"	5"	4400 lbs.	2" x 4"	13" x 7" x 7"	29.3 lbs.
9629785	5"	6-1/4"	5060 lbs.	2-3/4" x 5"	15" x 9" x 8"	47.3 lbs.
9629786	6"	7"	6160 lbs.	3" x 4-1/2"	16" x 9" x 9"	72.6 lbs.

## MEET THE Workholding GAME- CHANGER

*When strength, size, and precision matter, this vise doesn't just perform, it dominates.*

### 12" MACHINIST BENCH VISE

**Unmatched Capacity:** The first of its kind 12" wide jaws with a full 12" opening give you the freedom to secure the largest and toughest projects with ease.

**Built for the Long Haul:** Cast from 80,000 PSI SG ductile iron, it packs 25% more durability than any competitor, making it the strongest partner in your shop.

**Total Control:** A full 360° swivel base with dual lockdowns means you can position your work exactly how you want it, no compromises, no slipping.

**Smart by Design:** Fully replaceable, hardened steel jaws keep your vise working like new for years, while the precision-machined slide bar ensures zero jaw movement, even at maximum capacity. This isn't just another vise. This is the benchmark for strength, stability, and innovation in the shop.



9629692

- First of its kind 12" wide jaws with 12" opening
- 80,000 PSI SG ductile iron construction gives 25% more durability than other ductile iron vises on the market
- Full 360° swivel base with dual lockdowns
- Fully replaceable, hardened steel jaws
- Precision machined slide bar eliminates jaw movement even when fully opened



Item #	Jaw Width	Jaw Opening	Clamping Force Max	Anvil Dimensions	Overall Dimensions	Weight
9629692	12"	12"	9640 lbs.	4-3/16" x 3-1/2"	12-7/16" x 25" x 10-/8"	98 lbs.

## MACHINIST VISES

A heavy duty machinist vise built to withstand the toughest of maintenance and production requirements. Constructed of high tensile malleable cast iron and machined to close tolerances to assure secure clamping at any opening. Built for performance and endurance to handle your workholding needs.

- 80,000 PSI SG ductile iron construction
- Hardened replaceable steel jaws
- Slide bar serves as extra-large anvil work area



Item #	Jaw Width	Jaw Opening	Clamping Force Max	Anvil Dimensions	Overall Dimensions	Weight
9629695	5"	5"	5500 lbs.	3-1/2" x 2-3/8"	16-1/2" x 8" x 8-1/2"	36.7 lbs.
9629696	6"	6"	7040 lbs.	3-5/8" x 2-5/8"	19" x 9" x 9-3/4"	48.4 lbs.
9629698	8"	8"	7920 lbs.	4-1/4" x 2-3/4"	20-3/4" x 10-1/2" x 10-1/4"	59.4 lbs.



## UTILITY WORKSHOP VISE

Select the Utility Workshop Vise when you need a versatile all-around vise. This tough vise is ready for a variety of applications at an economical price. Both the moveable and main body castings are made of 80,000 PSI SG ductile iron construction making it ideal for utility and light to medium duty use.

- Replaceable hardened serrated steel jaws
- Locking swivel base
- Anvils with large working area
- Includes cast pipe jaws



Item #	Jaw Width	Jaw Opening	Clamping Force Max	Anvil Dimensions	Overall Dimensions	Weight
9629684	4"	4"	4840 lbs.	2-3/8" x 1-3/4"	12-1/4" x 6" x 6"	20.2 lbs.
9629686	6"	6"	7040 lbs.	3-1/8" x 2-7/8"	17" x 8-1/2" x 7-1/4"	32.1 lbs.
9629688	8"	8"	7920 lbs.	3-1/8" x 2-1/8"	20" x 8-1/2" x 8-1/4"	49.5 lbs.
9629680	10"	10"	8580 lbs.	3-1/2" x 3-1/2"	24" x 11-3/4" x 8-3/4"	68.2 lbs.



## MULTI-POSITIONING BALL BENCH VISE

Palmgren's new 4" ball bench vise is an extremely versatile workholding tool that lets you position your work at multiple angles without having to reposition the workpiece. Easy to use, the vise body can be clamped at any point by the side locking lever. Using this vise is like having an extra hand allowing for hundreds of different applications making your bench top work easier and more productive.

- You can tilt, turn, or rotate the vise; positioning it in multiple planes
- Reversible replacement jaws
  - Option 1 serrated jaw faces
  - Option 2 smooth faces with "V" grooves for round parts
  - Option 3 use one serrated face and one smooth face for odd shaped parts
- 80,000 PSI SG ductile iron construction
- Large anvil
- Useful for all small vise assembly, maintenance and hand forming operations



Item #	Jaw Width	Jaw Opening	Throat Depth	Anvil	Max Rotation	Max Angle	Overall Dimensions	Weight
9629773	4"	6"	1.5"	1.75" x 4.25"	360°	35°	10.75" x 5.5" x 7"	16 lbs.



## CLAMP BASE 9629771 FITS 9629772 & 9629773 VISES

The perfect addition to our multi-position vises.



## MULTI-JAW, HEAVY-DUTY, BALL SWIVEL BENCH VISE

Palmgren's new multi-jaw ball vise is an extremely versatile workholding tool that lets you position your work at multiple positions and angles without having to move the workpiece. Easy to use the vise body can be clamped at any point by the side locking lever. Using this vise is like having an extra hand allowing for a multiple of different applications making your bench top work easier and more productive.

- You can tilt, turn or rotate the vise, positioning it in multiple planes
- The jaws rotate 360 degrees and lock in multiple positions
- Replaceable hardened steel jaws
- Features parallel jaws, pipe jaws and V-jaws
- 80,000 PSI SG ductile iron construction
- Useful for all small vise assembly, maintenance and hand finishing operations
- Large anvil



Item #	Jaw Width	Jaw Opening	Throat Depth	Max Rotation	Max Angle	Overall Dimensions	Weight
9629772	4"	4"	3"	360°	35°	12" x 6" x 18"	38 lbs.



## PAN AND BOX BRAKE ATTACHMENT

For box, pan and reverse bending of sheet metal applications.

- Designed for use with a bench vise, the bending jaw lever handle delivers safe, easy movement
- The unit is equipped with easily removable fingers that permit angle, channel, box and other complex bending operations
- Use with any bench vise that has 4" / 5" / 6" / 8" wide jaws

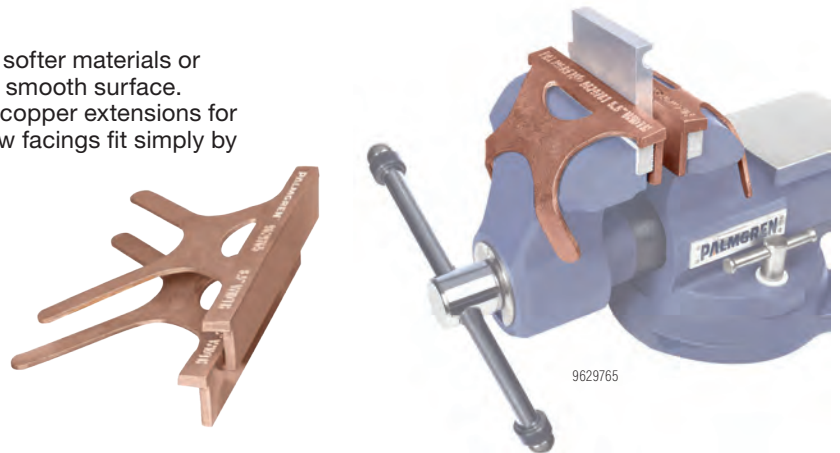
Item #	Max. Sheet Thickness	Maximum Material Width	Removable Finger	Weight
9629611	1"	12-1/2"	5-7/8", 2-7/8", 2", 1"	22 lbs.



## COPPER JAW CAPS

Designed to protect and avoid marring the surface of softer materials or fine workpieces. Convert your serrated jaw faces to a smooth surface. Palmgren's jaw caps have polished faces and pliable copper extensions for a sure-grip fit on any make of vise. These universal jaw facings fit simply by bending back the ears.

Item #	Jaw Width	Item #	Jaw Width
9629759	4"	9629763	6.5"
9629760	5"	9629764	8"
9629761	5.5"	9629765	8.5"
9629762	6"		



## BENCH VISE PEDESTAL STAND

Crafted from a sturdy 1/4" thick steel plate, this product features a bolt hole pattern specifically designed to accommodate all Palmgren bench vises with jaw widths ranging from 4" to 8.5". It includes four base mounting holes for secure installation and allows for toolless assembly and disassembly.

Item #
9670098



Assembles by hand - no tools needed.



Base can be filled with sand or concrete for ballast.



## SPRING CLAMPS

When you need to apply clamping pressure quickly and easily Palmgren's spring clamps deliver proven durability and strong clamping pressure. Throughout the clamps range of opening the point of clamping pressure always remains at the jaw tips to ensure they'll hold together exactly where you need them too. Applications for these universal clamps are unlimited and they can be used on metal, wood, plastic, fabric as well as any additional materials that need to be held in place.

- Manufactured 100% in the USA
- Up to 30% more clamping pressure than the imports
- Tang compression spring keeps the jaws in alignment
- Available with or without poly-vinyl protective tips
- Will hold down materials for both indoor and outdoor tasks



Item #	Description	Overall Length	Overall Height	Overall Width	Jaw Opening Max	Throat Depth	Jaw Width	Clamping Pressure	Weight
64011	1" Spring Clamps with Tips	4"	2.5"	0.835"	1.089"	1.29"	0.835"	95 lbs.	0.15 lbs.
64012	2" Spring Clamps with Tips	6.50"	3.75"	1.130"	1.930"	2.2"	1.130"	80 lbs.	0.40 lbs.
64013	3" Spring Clamps with Tips	9.5"	6.5"	1.405"	3.425"	3.085"	1.405"	75 lbs.	0.95 lbs.
64014	4" Spring Clamps with Tips	12.375"	8.5"	1.405"	4.865"	4.065"	1.405"	75 lbs.	1.25 lbs.
64021	1" Spring Clamps without Tips	4"	2.5"	0.835"	1.089"	1.29"	0.835"	95 lbs.	0.13 lbs.
64022	2" Spring Clamps without Tips	6.50"	3.75"	1.130"	1.930"	2.2"	1.130"	80 lbs.	0.35 lbs.
64023	3" Spring Clamps without Tips	9.5"	6.5"	1.405"	3.425"	3.085"	1.405"	75 lbs.	0.90 lbs.
64024	4" Spring Clamps without Tips	12.375"	8.5"	1.405"	4.865"	4.065"	1.405"	75 lbs.	1.18 lbs.

## MANUAL LOCKING PLIERS

Palmgren's locking pliers are designed for faster tool setup and more locking force. They help leave hands free when clamping, helping to eliminate repetitive squeezing action and general hand fatigue when manipulating.

The convenient geometry of the handles allows for easier use and more hand force for increased clamping power.

- Drop forged and hardened jaws
- Rugged teeth profile for durability and toughness
- Spring loaded release lever – releases easily even when tools are firmly locked
- Large diameter rivets provide secure joints delivering durability & robust pliers
- Durable nickel plate finish
- Locking nut holds adjustment during repetitive jobs
- Adjustable lead screws comes with 1/4" hex key drive. This allows for easy pressure adjustment, draws materials together and provides a more controlled release.
- Lifetime warranty



71060



70700



70800



71100



70550



70900



70620

	Size	Item #	Jaw Opening	Throat Depth	Jaw Width	Inside Clearance
<b>4-POINT CURVED JAW</b>	10"	71060	2"	1-1/2"	1/2"	–
<b>CURVED JAW</b>	10"	71050	2"	1-1/2"	1/2"	–
	7"	70750	1-3/4"	1-1/4"	1/2"	–
	5"	70550	1-1/4"	1-1/4"	3/8"	–
<b>STRAIGHT JAW</b>	10"	71000	1-3/4"	1-1/4"	5/8"	–
	7"	70700	1-1/2"	1-1/4"	1/2"	–
<b>LONG NOSE</b>	9"	70950	2-3/4"	2-1/2"	3/8"	–
	6"	70650	2"	2"	3/8"	–
<b>C-CLAMPS</b>	18"	71800	8"	10"	1/2"	4"
	11"	71100	3-1/2"	3-1/4"	1/2"	–
	6"	70600	2"	1-3/4"	2-3/8"	2-3/8"
<b>C-CLAMPS WITH PADS</b>	18"	71825	8"	10"	1-1/4"	4"
	11"	71120	3-1/2"	3-1/4"	1-1/4"	–
	6"	70620	1-3/4"	1-3/4"	3/4"	2-3/8"
<b>SHEET METAL CLAMP</b>	8"	70800	1-1/2"	1-3/4"	3"	–
<b>WELDING CLAMP</b>	9"	70900	2"	2-1/2"	2-3/4"	–



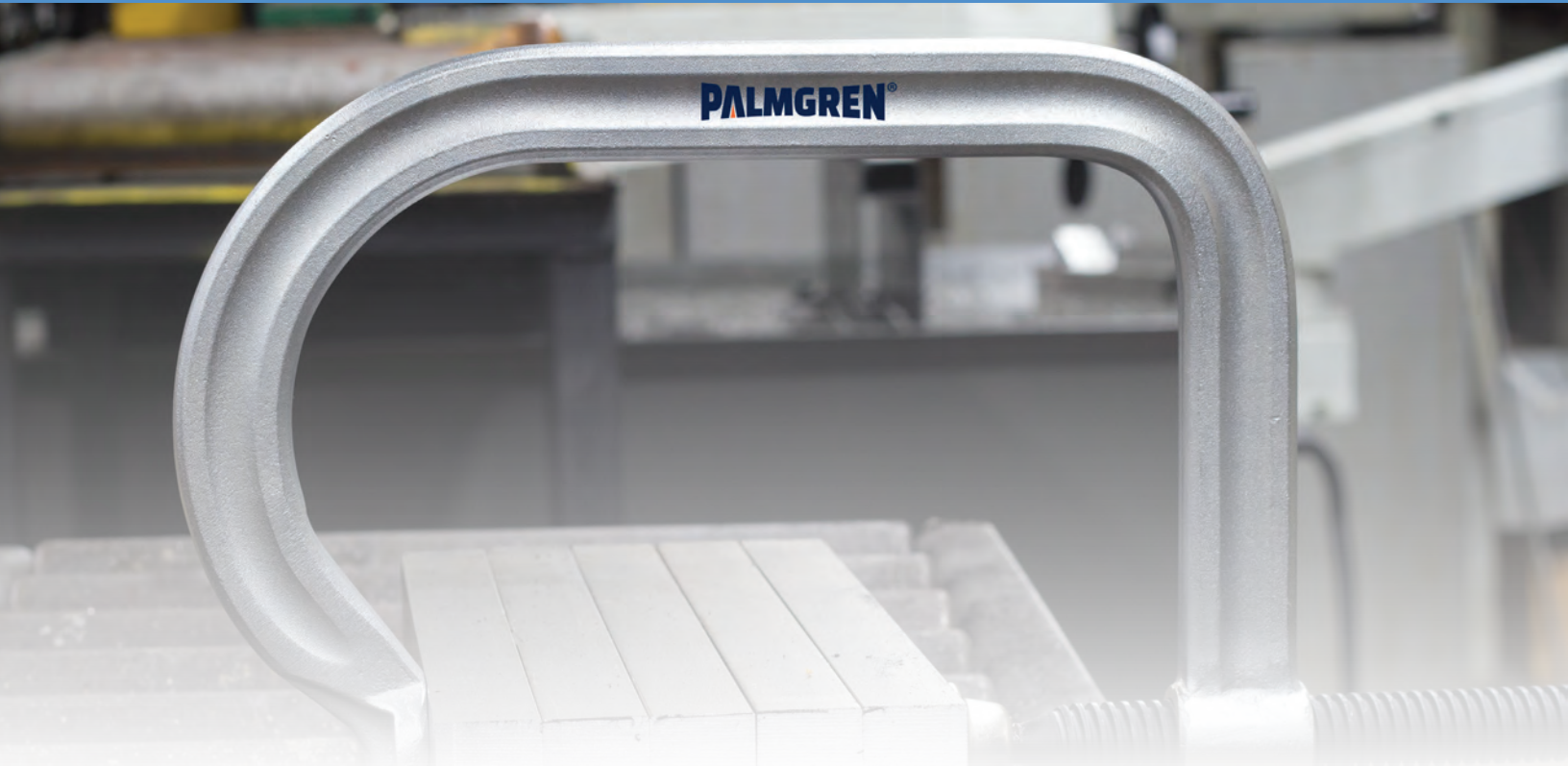
# WHAT TO LOOK FOR IN A C-CLAMP

Many C-Clamps look alike, but you can be sure they aren't all made alike. Palmgren C-Clamps are different. They're stronger, come in a complete range of sizes and styles... there's one to fit your needs. Check Palmgren's innovative and exclusive features too.

Next time you're buying C-Clamps - compare Palmgren.

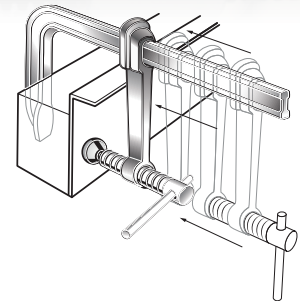
- 1** Perma-pad swivel assures even bearing at any angle. Won't come off in normal use.
- 2** Standard throat capacity to handle more jobs with fewer and smaller clamps.
- 3** Stronger body with added ribbing for greater support is made of drop forged steel. Guaranteed not to break.
- 4** Extra strong spindle. Won't bend or warp. Permanently lubricated.
- 5** Spindle Equipped with T-Handle and Hex head for increased clamping pressures





## L-CLAMPS

Palmgren's L-clamps save time, labor and increase productivity making them a perfect value. Just slide the clamping arm to the workpiece and tighten. When the job is complete simply loosen the spindle and slide the clamping arm back. L-clamps handle a wide variety of work sizes and shapes allowing you to clamp the workpiece quicker while using fewer clamps on each job.



## STANDARD DUTY L-CLAMPS

- Innovative spring tempered and hardened steel frames optimizes high static stress loadings
- Dropped forged sliding clamping arm for added strength and durability
- Fully hardened steel spindles for greater loading capabilities and longer service life
- Black-oxide plated spindles that resist wear while impeding rust
- Replaceable swivel pads
- One clamp accommodates a wide variety of sizes and shapes of workpieces
- Lifetime guarantee against breakage

Item #	Opening	Throat Depth	Spindle Diameter	Clamp Pressure	Weight
9629304	0" - 4"	2-3/8"	1/2"	600 lbs.	1 lbs.
9629306	0" - 6"	3-5/32"	9/16"	700 lbs.	1.5 lbs.
9629308	0" - 8"	3-15/16"	5/8"	1000 lbs.	2 lbs.
9629310	0" - 10"	3-15/16"	5/8"	1200 lbs.	3 lbs.
9629312	0" - 12"	3-15/16"	3/4"	1200 lbs.	4 lbs.
9629316	0" - 16"	3-15/16"	3/4"	1650 lbs.	4.5 lbs.



## HEAVY DUTY COPPER SPINDLE L-CLAMPS

- Innovative spring tempered and hardened steel frames optimizes high static stress loadings
- Dropped forged sliding clamping arm for added strength and durability
- Fully hardened steel spindles for greater loading capabilities and longer service life
- Anti-welding splatter copper plated spindles that resist wear while impeding rust
- Replaceable swivel pads
- One clamp accommodates a wide variety of sizes and shapes of workpieces
- Lifetime guarantee against breakage

Item #	Opening	Throat Depth	Spindle Diameter	Clamp Pressure	Weight
9629408	0" - 8"	4-3/4"	3/4"	2300 lbs.	4.5 lbs.
9629410	0" - 10"	4-3/4"	3/4"	2300 lbs.	5 lbs.
9629412	0" - 12"	4-3/4"	3/4"	2300 lbs.	5 lbs.
9629416	0" - 16"	4-3/4"	3/4"	2300 lbs.	5.5 lbs.
9629420	0" - 20"	4-3/4"	3/4"	2300 lbs.	6 lbs.
9629424	0" - 24"	4-3/4"	3/4"	2300 lbs.	6.5 lbs.

## SUPER DUTY L-CLAMPS

- Innovative spring tempered and hardened steel frames optimizes high static stress loadings
- Dropped forged sliding clamping arm for added strength and durability
- Fully hardened steel spindles for greater loading capabilities and longer service life
- Anti-welding splatter copper plated spindles that resist wear while impeding rust
- Replaceable swivel pads
- One clamp accommodates a wide variety of sizes and shapes of workpieces
- Lifetime guarantee against breakage

Item #	Opening	Throat Depth	Spindle Diameter	Clamp Pressure	Weight
9629432	0" - 12"	6-7/8"	7/8"	5000 lbs.	12 lbs.
9629434	0" - 16"	6-7/8"	7/8"	5000 lbs.	13.5 lbs.
9629436	0" - 20"	6-7/8"	7/8"	5000 lbs.	15 lbs.
9629438	0" - 24"	6-7/8"	7/8"	5000 lbs.	16 lbs.



## REGULAR DUTY DROP FORGED DEEP THROAT C-CLAMPS

Palmgren's line of drop forged C-clamps delivers performance and features in a C-clamp that count. These clamps provide higher strength, lower weight, coupled with advanced heat treating on both the body and spindle. This creates a C-clamp that holds securely and safely up to the rated maximum capacity. Palmgren's dropped forged clamps are cost effective, versatile, durable, and long lasting.

- High strength dropped forged frame
- Spindles are full length, machined from a single piece of tempered and hardened steel
- Black-oxide plated spindles resist wear while impeding rust
- Replaceable swivel pads
- Frames complete with lacquer finish
- Lifetime warranty against breakage

Item #	Opening	Throat Depth	Max Clamping Force	Spindle Diameter	Spindle Hex Size	Weight
9629510	0 - 2"	2-1/8"	3,960 lbs.	0.405"	9/16"	1.4 lbs.
9629511	0 - 3"	2-1/2"	4,400 lbs.	0.527"	3/4"	2 lbs.
9629512	0 - 4"	3-1/4"	6,600 lbs.	0.670"	7/8"	3.3 lbs.
9629513	0 - 6"	4-1/8"	8,800 lbs.	0.670"	7/8"	5.1 lbs.
9629514	0 - 8"	5"	8,800 lbs.	0.670"	7/8"	8.1 lbs.
9629515	0 - 10"	6"	8,800 lbs.	0.670"	7/8"	11 lbs.
9629516	0 - 12"	6-3/10"	8,800 lbs.	0.670"	7/8"	13.9 lbs.



## REGULAR DUTY DROP FORGED DEEP THROAT COPPER SPINDLE C-CLAMPS

Palmgren's line of drop forged C-clamps delivers performance and features in a C-clamp that count. These clamps provide higher strength, lower weight, coupled with advanced heat treating on both the body and spindle. This creates a C-clamp that holds securely and safely up to the rated maximum capacity. Palmgren's dropped forged clamps are cost effective, versatile, durable, and long lasting.

- High strength dropped forged frame
- Spindles are full length, machined from a single piece of tempered and hardened steel
- Copper plated anti-welding splatter spindles
- Replaceable swivel pads
- Frames complete with lacquer finish
- Lifetime warranty against breakage

Item #	Opening	Throat Depth	Max Clamping Force	Spindle Diameter	Spindle Hex Size	Weight
9629517	0 - 2"	2-1/8"	3,960 lbs.	0.405"	9/16"	1.4 lbs.
9629518	0 - 3"	2-1/2"	4,400 lbs.	0.527"	3/4"	2 lbs.
9629519	0 - 4"	3-1/4"	6,600 lbs.	0.670"	7/8"	3.3 lbs.
9629520	0 - 6"	4-1/8"	8,800 lbs.	0.670"	7/8"	5.1 lbs.
9629521	0 - 8"	5"	8,800 lbs.	0.670"	7/8"	8.1 lbs.
9629522	0 - 10"	6"	8,800 lbs.	0.670"	7/8"	11 lbs.
9629523	0 - 12"	6-3/10"	8,800 lbs.	0.670"	7/8"	13.9 lbs.



## REGULAR DUTY DROP FORGED C-CLAMPS

Palmgren's high tech line of drop forged C-clamps delivers performance and features in a C-clamp that count. Built from state of the art research and computer aided design, these clamps provide higher strength, lower weight, coupled with advanced heat treating on both the body and spindle creates C-clamps that hold securely and safely up to their rated maximum capacities. Palmgren's dropped forged clamps are cost effective, versatile, durable and long lasting.

- High strength dropped forged frame
- Spindles are full length, machined from a single piece of tempered and hardened steel
- Square spindle heads stand up to wrench tightening
- Black-oxide plated spindles resist wear while impeding rust
- Replaceable swivel pads
- Frames complete with lacquer finish
- Lifetime warranty against breakage

Item #	Opening	Throat Depth	Spindle Diameter	Clamp Pressure	Weight
9629097	0-4"	2-1/8"	5/8"	6200 lbs.	2.4 lbs.
9629098	0-6"	2-7/8"	13/16"	6900 lbs.	6.4 lbs.
9629099	0-8"	3-7/8"	15/16"	6900 lbs.	8.7 lbs.
9629105	0-10"	4-7/8"	15/16"	8000 lbs.	12.1 lbs.
9629106	0-12"	5"	1-1/8"	9300 lbs.	18.3 lbs.



## REGULAR DUTY DROP FORGED COPPER SPINDLE C-CLAMPS

Palmgren's high tech line of drop forged C-clamps delivers performance and features in a C-clamp that count. Built from state of the art research and computer aided design, these clamps provide higher strength, lower weight, coupled with advanced heat treating on both the body and spindle creates C-clamps that hold securely and safely up to their rated maximum capacities. Palmgren's dropped forged clamps are cost effective, versatile, durable and long lasting.

- High strength dropped forged frame
- Spindles are full length, machined from a single piece of tempered and hardened steel
- Square spindle heads stand up to wrench tightening
- Copper plated anti-welding splatter spindles
- Replaceable swivel pads
- Frames complete with lacquer finish
- Lifetime warranty against breakage

Item #	Opening	Throat Depth	Spindle Diameter	Clamp Pressure	Weight
9629107	0-4"	2-1/8"	5/8"	6200 lbs.	2.4 lbs.
9629108	0-6"	2-7/8"	13/16"	6900 lbs.	6.4 lbs.
9629109	0-8"	3-7/8"	15/16"	6900 lbs.	8.7 lbs.
9629110	0-10"	4-7/8"	15/16"	8000 lbs.	12.1 lbs.
9629111	0-12"	5"	1-1/8"	9300 lbs.	18.3 lbs.



## SUPER DUTY DROP FORGED C-CLAMPS

Palmgren's line of drop forged extra heavy-duty C-clamps delivers performance and features in a C-clamp that counts. Sometimes referred to as a "bridge clamp" these clamps provide higher strength and are made for the heaviest of steel construction and fabrication projects. The heat treated and tempered body and spindle creates C-clamps that hold securely and safely up to their rated maximum capacities.

- High strength dropped forged heat treated and tempered frame
- Spindles are machined from a single piece of square cold drawn alloy steel, hardened and tempered
- Each clamp comes with interchangeable full closing and non-full closing spindle to fit your specific application
- Square spindle head for maximum torque to be used with wrenches or power tools
- Lifetime warranty against breakage



Item #	Full Spindle Opening	Short Spindle Opening	Throat Depth	Lead Screw Diameter	Lead Screw Nut	Max Clamping Force	Weight
9629088	0 - 2.25"	0.600" - 2.25"	2"	0.750"	0.750"	12,500 lbs.	5 lbs.
9629089	0 - 4.5"	0.25" - 4.5"	3"	1"	1"	20,000 lbs.	9 lbs.
9629090	0 - 6.5"	1.875 - 6.5"	3-1/2"	1.25"	1.25"	27,500 lbs.	19.9 lbs.
9629091	0 - 8.5"	1.375 - 8.5"	4-1/2"	1.25"	1.25"	31,250 lbs.	26 lbs.
9629092	0 - 10.5"	3.75 - 10.5"	4-3/4"	1.25"	1.25"	35,000 lbs.	36 lbs.

### INTERCHANGEABLE FULL-CLOSE AND NON-CLOSE SPINDLES

Each clamp comes with interchangeable full closing and non-full closing spindles to fit your specific application



## REPLACEMENT SPINDLE SETS

Item #	Description
962908802	2" Bridge Clamp Replacement Spindle Set
962908902	4" Bridge Clamp Replacement Spindle Set
962909002	6" Bridge Clamp Replacement Spindle Set
962909102	8" Bridge Clamp Replacement Spindle Set
962909202	10" Bridge Clamp Replacement Spindle Set

## ECONOMY CAST IRON C-CLAMPS

Palmgren's durable cast c-clamps are especially suited for use in a variety of light to medium industrial, woodworking and general repair applications. The tough cast iron body and steel spindle stand up to rigors of everyday use. These versatile cost effective clamps are an excellent choice for your general clamping needs.

- Tough cast iron frame
- Steel screws with sliding cross-pin handle
- Replaceable pads

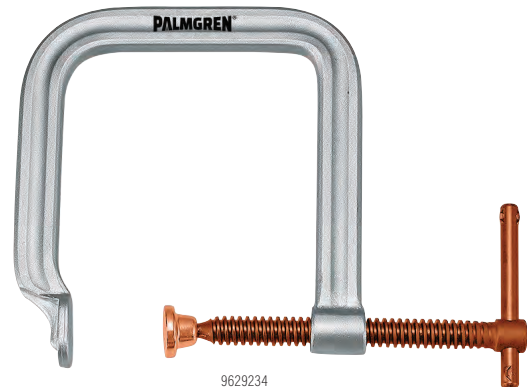
Item #	Capacity	Throat Depth	Spindle Diameter	Clamp Pressure	Weight
9629095	0" - 3"	1-7/8"	7/16"	1540 lbs.	0.84 lbs.
9629096	0" - 4"	2-1/8"	9/16"	1694 lbs.	1.23 lbs.
9629093	0" - 5"	2-7/16"	9/16"	1850 lbs.	1.67 lbs.
9629094	0" - 6"	2-11/16"	9/16"	2000 lbs.	2.31 lbs.



9629095

## REGULAR DUTY EXTRA DEEP THROAT - COPPER SPINDLES C-CLAMPS

Item #	Capacity	Throat Depth	Spindle Diameter	Clamp Pressure	Weight
9629233	0" - 3"	5"	9/16"	1500 lbs.	2 lbs.
9629234	0" - 4"	6-1/4"	5/8"	1600 lbs.	3 lbs.
9629236	0" - 6"	9-7/8"	3/4"	1800 lbs.	7 lbs.
9629238	0" - 8"	13-3/4"	3/4"	2000 lbs.	12 lbs.
9629239	0" - 10"	15-3/4"	7/8"	2400 lbs.	17 lbs.



9629234

## 3-IN-1 SHEAR, BRAKE & ROLL MACHINES 30", 40", & 52"

Palmgren's new line of Shear, Brake & Roll 3-in-1 machines are the ultimate in shop floor space savings. These machines can roll, bend and cut sheet steel up to 16-gauge thick. The perfect tool for small shops and one-off projects.

- Rolls also include grooves for rolling wire
- Heavy-duty cast-iron frame and bed construction
- Spring loaded sheet hold down
- Hinged slip roll guard covers the rollers for increased safety when not in use
- 9629620 stand not included, see below
- 9629622 stand not included, see below
- 9629624 stand included



Item #	Bed Width	Overall Dimensions (LxWxH)	Rolling Capacity Mild Steel	Rolling Capacity Stainless Steel	Sheet Capacity Mild Steel	Sheet Capacity Stainless Steel	Minimum Rolling Diameter	Weight
9629620	30"	38.5" x 17" x 56.4"	20 gauge	24 gauge	20 gauge	24 gauge	1-1/2"	264 lbs.
9629622	40"	50.4" x 17" x 56.4"	20 gauge	24 gauge	20 gauge	24 gauge	1-5/8"	440 lbs.
9629624	52"	63.8" x 22.8" x 29.1"	16 gauge	20 gauge	16 gauge	20 gauge	1-5/8"	891 lbs.

### OPTIONAL STANDS

- Constructed from heavy duty sheet steel
- Raises machine operation to optimal ergonomic height
- 9629621 Stand fits item 9629620
- 9629623 Stand fits item 9629622





## DELUXE ARBOR PRESSES

Delivers the heavy force needed for riveting, squeezing, punching, bending, and other pressing applications. Removable machined steel anvil provides accurate work support in four slot positions. Depth stop securely clamps to the ram and withstands full pressure. A lockable fine thread adjustment adjusting screw accurately limits the depth of the ram stroke.

Punches or tools may be added to the end of the ram with the aid of a magnetic insert. The ram is reversible with one end solid and the other end with a hole and magnet to hold bits and tools.

- 80,000 PSI SG ductile iron construction
- Rugged steel ram is driven by a machined pinion
- Base drilled for mounting on a bench or pedestal



- Includes three piece bit set - 1 pointed, 1 round and 1 square end bit, and a removable steel anvil
- The base is machined to hold the three bit set

Item #	Force	Lever Ratio	Swing	Anvil Diameter	Max. Work Height	Ram Dimensions	Ram Punch Hole	Height	Base Dimensions	Weight
9661051	0.5 Ton	18.1:1	6-1/4"	3-3/8"	4"	3/4" x 3/4"	3/8"	9-1/4"	5-3/8" x 9-1/4"	19 lbs.
9661101	1.0 Ton	18.0:1	8"	4-3/8"	5"	1" x 1"	1/2"	11"	6" x 10-5/8"	34 lbs.
9661201	2.0 Ton	19.0:1	10-3/8"	6-5/8"	6-5/8"	1-1/4" x 1-1/4"	1/2"	15-3/8"	7-7/8" x 16"	70 lbs.
9661301	3.0 Ton	16.9:1	11-3/4"	6-5/8"	11"	1-1/2" x 1-1/2"	1/2"	21-1/4"	9-1/2" x 18"	135 lbs.
9661401	4.0 Ton	25.7:1	16-5/8"	9-7/8"	14-3/8"	1-3/4" x 1-3/4"	1/2"	27-1/8"	11-1/4" x 21-1/4"	207 lbs.
9661501	5.0 Ton	25.9:1	18"	9-1/2"	19"	2" x 2"	N/A	32-1/2"	13-1/2" x 24-1/2"	308 lbs.



## ARBOR PRESS STAND

The Arbor Press Stand provides a sturdy base and optimal height for easy operation. It has a slot on the top for pieces which need to extend below the base of the press table.

- Stand comes with built-in cup for catching expressed pieces
- Base and top are cast iron with a body of welded steel
- Fits all 2, 3 and 4 ton presses

Item #	Top Dimension	Base Dimension	Height	Weight
9670103	11-3/4" x 21-15/16"	11-15/16" x 22-3/16"	36"	88 lbs.

## RATCHETING ARBOR PRESS

The arm provides optimal leverage position with consistent application of force. In addition, it has more clearance over the table for broaching or pressing large items. It is counterweighted for rapid handle return.

Removable machined steel anvil has four slot positions. A lockable adjusting screw accurately limits the depth of the ram stroke.

The steel ram is reversible with one end solid and the other end with a hole and magnet to hold bits and tools.

- 80,000 PSI SG ductile iron construction
- Rugged steel ram is driven by a machined pinion
- Base drilled for mounting on a bench or pedestal
- Includes three piece bit set - 1 pointed, 1 round and 1 square end bit, and a removable steel anvil
- The base is machine to hold the three bit set

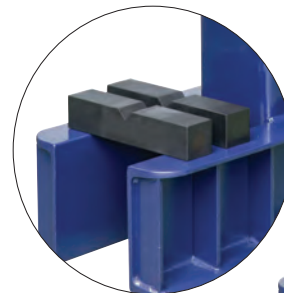


Item #	Force	Lever Ratio	Swing	Anvil Diameter	Max. Work Height	Ram Dimensions	Ram Punch Hole	Height	Base Dimensions	Weight
9661302	3.0 Ton	38.6:1	13-1/2"	7-7/8"	16-1/8"	1-1/4" x 1-1/4"	1/2"	27-7/8"	10" x 21-1/2"	230 lbs.

## 15 TON HYDRAULIC LEVER ARBOR PRESS

For those applications that require greater force this bench top arbor press has a hydraulic pump that provides up to 30,000 pounds of pressure with the pull of a lever. It delivers force for a wide array of applications from staking to pressing and riveting. The combination of the electro-welded steel plate frame and industrial grade hydraulics makes Palmgren's hydraulic arbor press the ultimate solution for the serious fabrication and machine shop owner.

- Up to 4" stroke
- Adjustable cylinder height
- Minimum workpiece height 7.4:"
- Removable table plate
- Machine comes standard with base plate and dual V-blocks
- Optional 5 piece round adaptor ram tooling set with 3/8", 1/2", 5/8", 3/4", and 7/8" diameters.



OPTIONAL ACCESSORIES:

Item # 9661620

Bit set for 9661609



Item #	Force	Swing	Anvil Dimensions	Max Work Height	Ram Dimensions	Ram Punch Hole	Overall Dimensions	Weight
9661609	15 Ton	12"	7.5" x 7.5"	17-3/8"	2-3/4"	1"	23" x 21" x 47"	286 lbs.

## MANUAL H-FRAME PRESSES

Palmgren's Hand Operated H-Frame Press line consists of 5-, 10-, 25- and 75-ton presses. Each machine is constructed from heavy duty steel plate that is welded together. The combination of rigid construction and industrial grade hydraulics make Palmgren's H-Frame presses the ultimate solution for the serious fabrication and machine shop owner who demands only the best quality from his operation.

- Pressure gauge for direct pressure readings
- Easily adjustable table for quick height changes between applications
- Holes in side frames allow for insertion of long material
- Hand operation for economic performance
- Efficient hand pump is conveniently located for reduced operator fatigue
- Fully-welded heavy steel plate frame for maximum rigidity
- Factory preset relief valve to prevent exceeding maximum pressure capacity
- By-pass hole prevents excessive ram extension
- Rapid ram return starts as soon as release valve is opened and may be stopped at any point by closing the valve
- Single acting cylinder design for improved operation



Item #	Maximum Pressure	Ram Diameter	Ram Extension	Press Bed Width	Table Channel Width	Min. Distance Ram to Table	Max. Distance Ram to Table	Leverage Ratio	Table & V-Block Weight	Overall Dimensions	Weight
9661617	5-Ton	1.57"	4.7"	19.5"	3.5"	0"	15.8"	400/1	22 lbs	30" x 15.7" x 36.5"	132 lbs.
9661618	5-Ton	1.57"	4.7"	19.5"	3.5"	2.17"	44"	400/1	22 lbs	30" x 20" x 65"	145 lbs.
9661611	10-Ton	1.8"	5"	15"	4.17"	3.3"	38.3"	1000/1	88 lbs.	31.5" x 21.6" x 71"	130 lbs.
9661613	25-Ton	2.1"	5.5"	11.8"	8.2"	0"	28.3"	1000/1	88 lbs.	35.4" x 14.1" x 59.8"	260 lbs.
9661615	75-Ton	3"	8.6"	18.8"	10.2"	0"	24.2"	1000/1	175 lbs.	51" x 19.6" x 67"	460 lbs.

## ELECTRONIC PUMP H-FRAME PRESSES

Palmgren's Electronic Pump H-Frame Presses come in a variety of shapes and sizes. The Electronic H-Frame line consists of 10-, 25- and 50-ton, with varying frame heights to suit all applications. The electronic H-Frame presses are the premier solution to any application from fabrication shops to prototype labs.

- Pressure gauge for direct pressure readings
- Easily adjustable table for quick height changes between applications
- Holes in side frames allow for insertion of long material
- Electronic operation for increased performance
- Fully-welded heavy steel plate frame for maximum rigidity
- Factory preset relief valve to prevent exceeding maximum pressure capacity
- By-pass hole prevents excessive ram extension
- Rapid ram return starts as soon as release valve is opened and may be stopped at any point by closing the valve
- Single acting cylinder design for improved operation



Item #	Maximum Pressure	Ram Diameter	Ram Extension	Press Bed Width	Table Channel Width	Min. Distance Ram to Table	Max. Distance Ram to Table	Ram Speed-Press	Table & V-Block Weight	Overall Dimensions	Weight
9661612	10-Ton	2.3"	8.6"	19"	6.6"	0"	18.11"	1.18"	88 lbs	37.4" x 13.3" x 57"	682 lbs.
9661614	25-Ton	2.5"	8.6"	19"	8.2"	0"	46.46"	1.18"	143 lbs	37.4" x 31.4" x 94.6"	1,496 lbs.
9661616	50-Ton	3.15"	8.6"	31.5"	10.2"	0"	47.64"	0.85"	176 lbs	37.4" x 31.4" x 87.9"	2,156 lbs.



For a detailed catalog of the  
full line of Palmgren Machine  
Tools visit our web site:

[www.palmgren.com](http://www.palmgren.com) or e-mail us to  
request a printed or electronic (pdf)  
catalog at: [sales@chhanson.com](mailto:sales@chhanson.com)

Palmgren is part of the family of  
brands of the C. H. Hanson  
Company. C. H. Hanson is one the  
nation's oldest manufacturers  
and has been family-run for five  
generations. C.H. Hanson's  
family of brands, Hanson,  
Hansco-Mark, Superior  
Tool, and Palmgren offer a  
wide range of high-quality  
products that are used  
every day across a broad  
range of industries.  
C.H. Hanson has a  
rich history of truly  
building "Tools for  
Generations."

**PALMGREN**®

2000 N. Aurora Road  
Naperville, IL 60563  
p: 800-827-3398  
f: 800-827-5834  
[sales@chhanson.com](mailto:sales@chhanson.com)  
[www.palmgren.com](http://www.palmgren.com)

12/25 - 25078