

These equipment have been tested and found to comply with the limits for a Class A digital device. Pursuant to Part 15 of the FCC rules, these limits are designed to provide reasonable protection against harmful interface in a residential installation. These equipment generate radiate radio frequency energy, and if not installed and used in accordance with the instructions may cause harmful interference to radio communication. However, there is no guarantee that interference will not occur in a particular installation. If these equipment do cause harmful interference to radio or television reception, it can be determined by turning the equipment off and on. The user is encouraged to try to eliminate the interference by one or more of the following measures:

- Reorient or relocate the receiving antenna.
- Increase the separation between the equipment and receiver.
- Connect the equipment into a circuit different from that to which the receiver is connected.
- Consult the dealer or an experienced radio/TV technician for help.

## Contents

- **Chapter 1 Overview**
  - Introduction .....1-1
  - Check List .....1-2
- **Chapter 2 Physical Description**
  - Front Panel .....2-1
  - LED Display .....2-1
  - Rear Panel .....2-2
  - RJ-45 100BaseTX Ports .....2-2
  - Uplink Port .....2-2
- **Chapter 3 Installation**
  - The Power Requirement .....3-1
  - Installing the Hub .....3-1
- **Appendix A Specifications** .....A-1

# 4 Port 100BaseTX Palmtop Fast Ethernet Hub

## User's Manual



73-0000060-00

## Trademarks

IBM PC/XT are registered trademarks of International Business Machines Corporation.  
NetWare is a registered trademark of Novell Inc.  
All other brand names are registered trademarks of their respective companies.

# 1 Overview

## Introduction

Thanks for your purchase of this 4 port palmtop Fast Ethernet hub. This is an IEEE 802.3u Class II hub that provides you the simplest way to create a small but high performance network that operates at 100Mbps.

Users need more and more bandwidth to meet the applications required such as multimedia, voice/video and etc.. The conventional 10BaseT networks can no more satisfy the users' needs. By migrating the users to a 100Mbps environment can dramatically improve the performance and response time. This palmtop Fast Ethernet hub is a easy to use and cost effective solution for users who need a 100Mbps network.

This hub can simply connect four devices(such as PCs, servers and printers) to form a Fast Ethernet environment, or can cascade together using uplink ports to connect up to six devices.

This guide describes the installation and usage of this hub. It includes the detail information of this hub and how to use it to connect a network.

## Check List

The product you purchase should contain the equipment and accessories shown as following.

- One 4 Port Palmtop Fast Ethernet hub
- One power adapter
- One user's manual

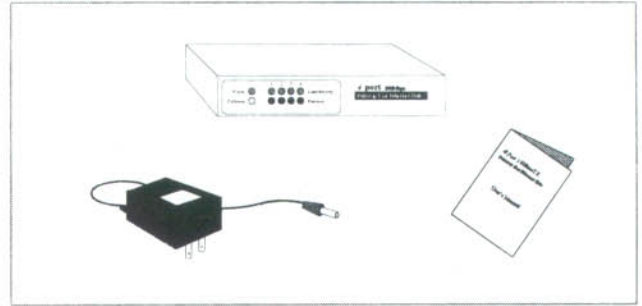


Figure 1-1 Check List

# 2 Physical Description

## Front Panel

The front panel contains the LEDs to show the status of the hub. Figure 2-1 shows the front panel of the hub.

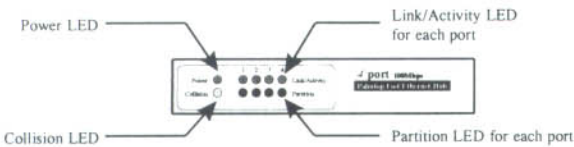


Figure 2-1 Front Panel

## LED Display

There are two LEDs for the whole hub and two LEDs for each port to show the status of the hub. The LEDs' description are shown in Table 2-1.

Table 2-1 LED information descriptions

LED	Color	Status	Description
Power	Green	On	Power is supplied to the hub.
Collision	Yellow	Blinking	Collision occurs on the network.
Link/Activity	Green	On	The link to the device works well.
		Blinking	There is data received on the port.
Partition	Red	On	The port is being partitioned.

## Rear Panel

There are five RJ-45 connectors and power supply connector on the rear panel as shown in Figure 2-2.

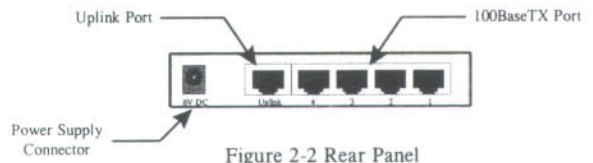


Figure 2-2 Rear Panel

## RJ-45 100BaseTX Ports

This hub provides four shielded RJ-45 100BaseTX ports. Users should use category 5 UTP cables to connect to these ports. The pin assignments of these cables should meet EIA/TIA 568 standards. All these ports are normal RJ-45 connectors (MDI-X) that can directly link to devices using normal cables. When users want to link two hubs should use cross-over cable between two normal ports or use normal cable between one uplink port (MDI) and one normal port.

## Uplink Port

The uplink port and port 4 can not use at the same time. Uplink port is defined to be a MDI port that is used to link to another hub without requiring cross-over cable.

## 3 Installation

### The Power Requirement

The power adapter attached with the hub varies with different area. Make sure which kind of adapter is suitable for you. The DC current required can be various from 600mA to 1A. Wrong use of power will damage the device. The hub is automatically powered on when the external 6V DC adapter is connected.

### Installing the Hub

**Step 1 :** Power off all of the computers, hubs, or other devices that will be connected to the hub.

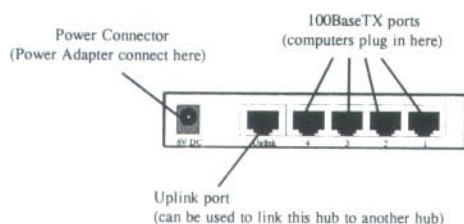


Figure 3-1 Connectors on the hub

3-1

**Step 3 :** The hub's uplink port lets you join two hubs together with a standard straight-through 100BaseTX cable. The hub's uplink port and the last 100BaseTX port marked 4 are connected together internally. When the uplink port is in use, port 4 cannot be used -- it must remain open. Do not connect anything to port 4 when the uplink port is in use.

Insert a standard, straight-through 100BaseTX cable between the hub's uplink port and another hub's normal port (not uplink port). For Fast Ethernet Class II hubs, you can connect only two hubs together.

When the hub is powered on, the LEDs belonging to the uplink port and port 4 will light up, indicating that they are both in use.

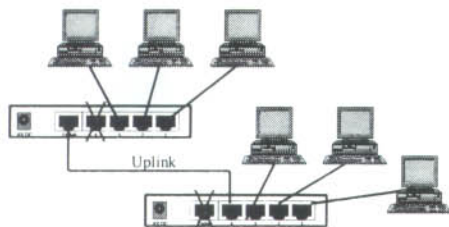


Figure 3-3 Connect two hubs using uplink port

3-3

**Step 2 :** Next, connect up to 4 Fast Ethernet nodes to the hub's four 100BaseTX ports (the ports are numbered 1-4). Standard (EIA/TIA 568, Non-crossover) category 5 UTP cables should be used. Each strand should be wired straight-through, pin for pin, and must not exceed 328-feet (100-m) in length.

**Note :** Do not attach a computer to the hub's uplink port; it should only be used for joining the workgroup hub to the other hub.

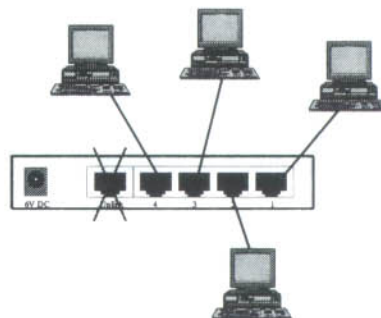


Figure 3-2 Connect four PCs to the hub

**Note :** If you do not plan to uplink the hub to another one, skip to Step 4 now.

3-2

**Step 4 :** Plug 2-pronged end of the hub's supplied power supply into an AC electrical outlet. Plug the other end into the hub's DC power jack.

**Step 5 :** The hub's green Power LED should light up. When the hub is in use, the other LED indicators will light up as described in Table 2-1.

**Note :** If the hub encounters excessive network collisions or faulty cabling, it will automatically partition the node(s) responsible from the rest of the network, protecting the remaining nodes against potentially corrupted data.

3-4

**Standards** : IEEE 802.3u, 100BaseTX

**Connectors** : RJ-45

**Ports** : Four standard ports, one uplink port

**System LED** : Power, Collision

**Port LED** :Link/Activity, Partition

**Dimension** : 125 x 70 x 25 mm

**Power** : 6V DC, 1A

**Emissions** : CE Mark

FCC Class A Part 15

**Temperature** : 0 ~ 59°C (Standard operating)

**Humidity** : 10% to 90% (Non-condensing)