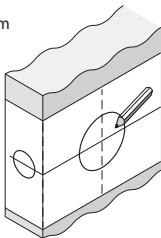


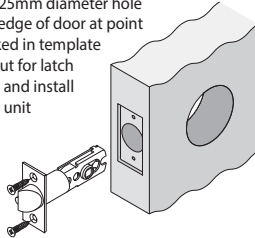
## STEP 1. Mark Door

- Mark height line on edge of door.
- Fold template over edge of door centering on height line.
- Mark centre of 25mm diameter latch hole and 54mm diameter lockset hole.



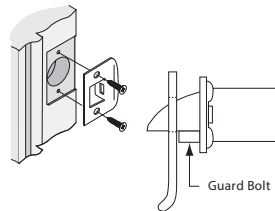
## STEP 2. Bore Holes

- Bore 54mm diameter hole through door face.
- Bore 25mm diameter hole into edge of door at point marked in template
- Cut out for latch front and install latch unit



## STEP 3. Install Strike

- Guard Bolt stops against strike, as illustrated, preventing forcing when door is closed.



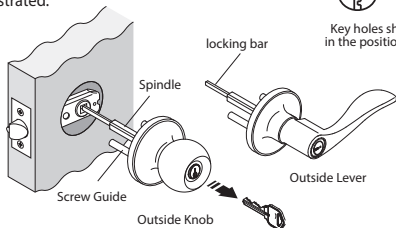
## STEP 4. Outside Units

- Install outside Knob/Lever with screw guides, locking bar and spindle engaged into latch as illustrated.

Knobset Leverset

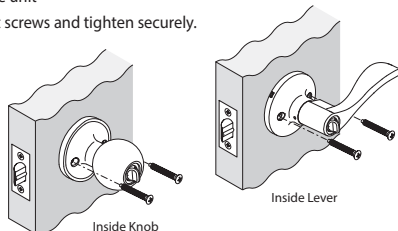


Key holes should be in the positions shown



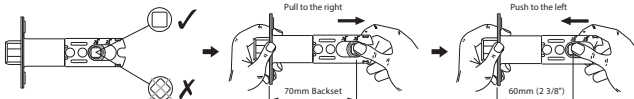
## STEP 5. Inside Units

- Engage screw guides, locking bar and spindle to inside unit
- Insert screws and tighten securely.



## ADJUSTABLE LATCH

- The latch can be adjusted to suit either backset by moving the turning wheel either to the right (70mm backset) or the left (60mm backset)

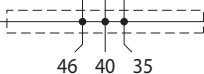


Note: During the adjustment as above, keeping two teeth of the turning wheel forward first



Fit here on door edge

Drill 25mm hole at  
centre of door edge



Installation template  
for tubular lockset

FOLD HERE

BACKSET 60mm

BACKSET 70mm

54mm Diameter



Made in China to  
Allegion Specifications

PDGT0009 Revised November 2020

