

# NHIC-17QAT / NHIC-17QNBAT

6" IC Air-Tight Line Voltage New Construction Housing

Source: 90W Max. (Varies by trim)

Type

Project

Catalog No.

Notes

## PRODUCT DESCRIPTION

New construction housing for use in insulated ceilings can be in direct contact with insulation. Air-tight construction provides energy savings by reducing the flow of air through the ceiling. The housing is labeled for use with Nora 6" line voltage trims and compatible with all LED retrofits.

## FEATURES

- IC Air-Tight energy saving by reducing the flow of air through the ceiling
- Rated for direct contact with insulation
- cULus listed for damp location and through branch circuit wiring
- Romex strain relief for cheaper installation and materials
- Hinged junction box door for quick and easy installation
- 24-1/2" Bar hangers with captive nails and alignment foot
- Accommodates 1-1/4" maximum ceiling thickness

## CONSTRUCTION

**Plastic Frame:** High quality 0.0245" steel die cut one piece frame.

**Housing:** 0.036" galvanized steel housing with riveted cap adjusts for ceiling thicknesses from 5/8" to 1-1/4". Spring brackets accept torsion wing trim springs; slots on socket plate accept standard coil springs.

**Air Flow Restriction:** Housing has factory installed gaskets to restrict airflow from room into ceiling plenum to <2CFM (cubic feet per minute) in accordance with ASTM 283 airtight requirements.

**Clearance:** "IC" Insulated ceiling housings are direct contact rated. Not to be used in direct contact with spray foam insulation.

## SOCKET

**NHIC-17QAT:** Galvanized steel socket plate adjusts inside housing for optimum light performance. Contains a single medium base socket. Protective cap included to protect socket interior during ceiling painting. Socket plate can be removed in the field to convert to a floating socket.

**NHIC-17QNBAT:** Socket is free floating and installs to eyeball, gimbal ring and new trims equipped with socket brackets. Protective cap included to protect socket interior during ceiling painting.

## ELECTRICAL

**Input Voltage:** 120V

**Socket:** Medium base

**Lamp:** Lamp type based on trim selection

**Wattage:** 90W max. (wattage varies based on trim)

**Bar Hangers:** Two 13-3/4" to 24-1/2" adjustable bar hangers with captive nails are included on frame. Hanger bars have T-Bar slot and alignment feet. Bar hangers are parallel to junction box, but can be repositioned 90° perpendicular to junction box if desired. "L" Shaped bar hanger foot to align to bottom of construction joist. A T-Bar notch allows easy installation in a suspended ceiling.

**Junction Box:** Prewired 25 cubic inch 0.064" thick galvanized steel box with six 1/2" trade size knockouts and hinged junction box door. All leads are #18AWG wire, the ground wire is connected to the bottom, and quick connectors are supplied on all leads. Maximum of 8 no. 12 AWG through branch circuit conductors suitable for at least 90°C permitted in junction box.

**Romex Strain Relief:** Junction box includes two Romex tabs with two slots at each tab for NM-cables of 12/2 to 14/2. The strain relief allows for easy installation and less materials.

**Quick Connect Feature:** Housing contains three UL approved push-in wire connectors that allow 1/4" stripped solid or tinned standard wires to be inserted. Connectors are attached to fixture power, common, and ground circuits.

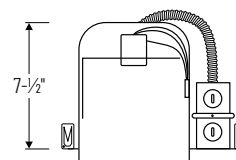
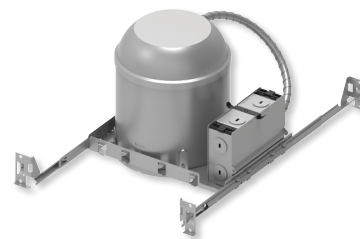
**Thermal Protector:** Standard UL thermal protector rated for 90°C is affixed to inner top surface of housing.

## LABELS AND LISTINGS

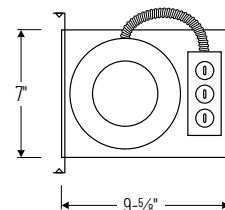
- cULus or cETLus Listed for Damp Location w/ Feed Through (Wet Location when used with designated trims)
- Airtight in accordance to ASTM 283
- NYC Approved: Calendar #43895



## PRODUCT IMAGES & DIMENSIONS



6-3/8"  
Ceiling Cut-Out



## 6" IC Air-Tight Line Voltage New Construction Housing

Housing Type

**NHIC-17QAT:** 6" IC Air-Tight Line Voltage New Construction Housing, Adjustable Socket Bracket, labeled at 90W max.

**NHIC-17QAT/XX:** 6" IC Air-Tight Line Voltage New Construction Housing, Adjustable Socket Bracket, labeled at lower wattage (**Consult Factory**)

**NHIC-17QNBAT:** 6" IC Air-Tight Line Voltage New Construction Housing, Floating Socket (No Bracket), labeled at 90W max.

**NHIC-17QNBAT/XX:** 6" IC Air-Tight Line Voltage New Construction Housing, Floating Socket (No Bracket), labeled at lower wattage (**Consult Factory**)

Example: **NHIC-17QAT** = 6" IC Air-Tight Line Voltage New Construction Housing, Adjustable Socket Bracket