

MOROCCAN CONCRETE™

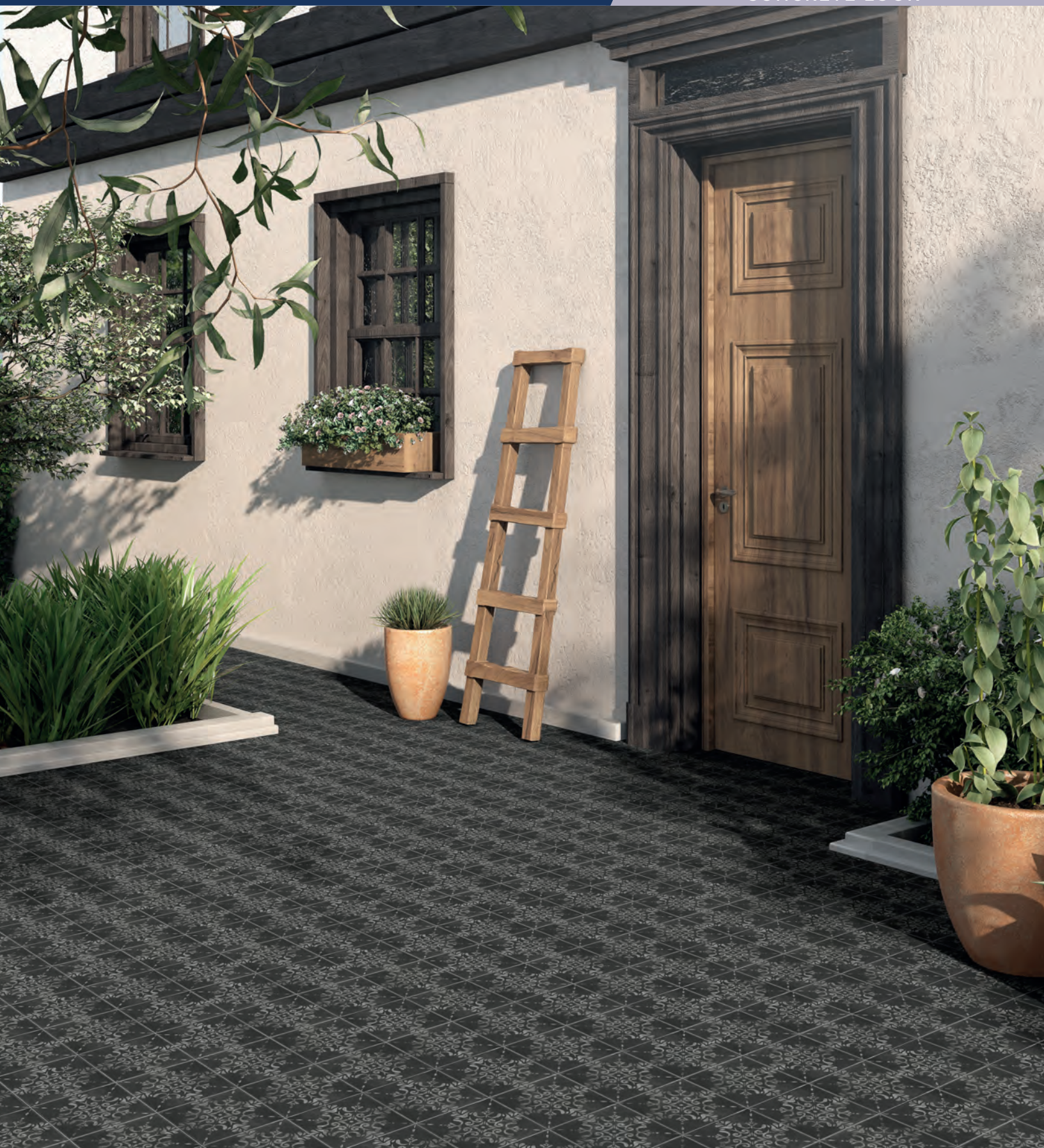
COLORBODY™ & GLAZED PORCELAIN & CERAMIC MOSAIC WITH
STEPWISE™ TECHNOLOGY

FLOOR

MARAZZI 

DARE TO BE BOLD™

CONCRETE LOOK



MOROCCAN CONCRETE™

Time worn concrete meets Moroccan style in a wide range of earthy color tones. From Light Moss to Ochre to Terra Cotta, these unique colors blend well with the multiple shapes and patterns offered in this collection. The series is rounded out by Aziza, a Moroccan-inspired 8x8 decorative motif in four colors, as well as a 3x3 decorative mosaic with a blend of patterns. Moroccan Concrete features StepWise™ technology, making it an ideal selection for indoor and outdoor spaces.



STEPWISE™

50% MORE
SLIP RESISTANT
THAN ORDINARY TILE†

†When compared to tile meeting ANSI Standards



COVER PHOTO: AZIZA CHARCOAL
ABOVE PHOTO: TERRA COTTA

CONCRETE LOOK

MOROCCAN CONCRETE™

COLORBODY™ & GLAZED PORCELAIN & CERAMIC MOSAIC WITH STEPWISE™ TECHNOLOGY

FLOOR

FINISHES: MATTE

MARAZZI®

DARE TO BE BOLD™

USAGE



MATERIAL



PRICING



SPECIAL FEATURES



CONCRETE LOOK

COLORBODY™ PORCELAIN FLOOR TILE



MC50 Off White



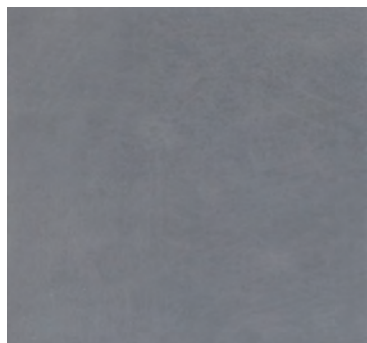
MC51 Taupe



MC52 Gray



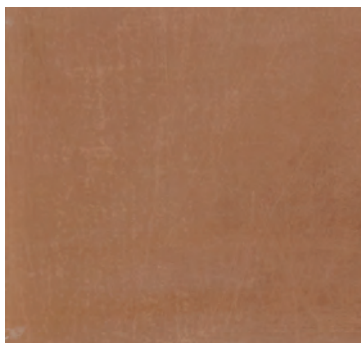
MC53 Light Moss



MC54 Blue Gray



MC55 Ochre



MC56 Terra Cotta



MC57 Charcoal

GLAZED PORCELAIN FLOOR TILE - 8 x 8 DECO



MC61
Aziza - Gray



MC58
Aziza - Blue Gray

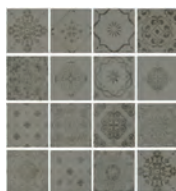


MC59
Aziza - Terra Cotta

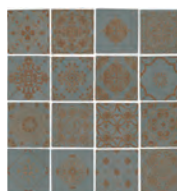


MC60
Aziza - Charcoal

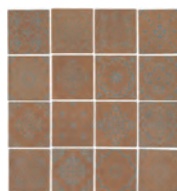
3 x 3 CERAMIC ENCAUSTIC MOSAIC | 12 x 12 SHEET



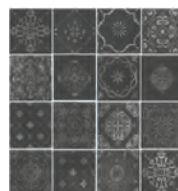
MC61
Aziza - Gray



MC58
Aziza - Blue Gray



MC59
Aziza - Terra Cotta



MC60
Aziza - Charcoal

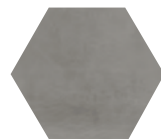
GLAZED PORCELAIN FLOOR TILE - 8" HEXAGON



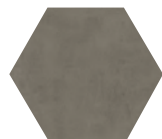
MC50 Off White



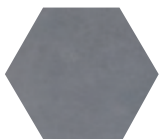
MC51 Taupe



MC52 Gray



MC53 Light Moss



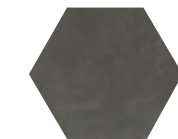
MC54 Blue Gray



MC55 Ochre



MC56 Terra Cotta



MC57 Charcoal

1-1/2" x 1-1/2" CERAMIC HEXAGON MOSAIC | 12 x 10 SHEET



MC50 Off White



MC51 Taupe



MC52 Gray



MC53 Light Moss



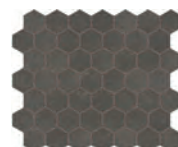
MC54 Blue Gray



MC55 Ochre



MC56 Terra Cotta



MC57 Charcoal



50% MORE
SLIP RESISTANT
THAN ORDINARY TILE*



WATERPROOF



STAINPROOF



DENTPROOF



SCRATCH-RESISTANT



FIRE RESISTANT



INDOOR/OUTDOOR



SIMPLICLEAN™

VISIT MARAZZITILE.COM/WHYTILE FOR A COMPLETE LIST OF QUALIFICATIONS AND EXCLUSIONS.



CONCRETE LOOK

SIZES

			Thickness	Sq. Ft./ Carton	Pieces/ Carton
	12 x 24 Floor Tile*	11-5/8" x 23-3/8" (29.56 cm x 59.44 cm)	5/16"	15.12	8
	24 x 24 Floor Tile*	23-3/8" x 23-3/8" (59.44 cm x 59.44 cm)	5/16"	15.20	4
	8" Hexagon Floor Tile*	7-7/8" x 9-1/8" (20.04 cm x 23.16 cm)	5/16"	9.37	25
	8 x 8 Deco Tile*	7-7/8" x 7-7/8" (20.00 cm x 20.00 cm)	5/16"	11.00	25
	1-1/2" x 1-1/2" Hexagon Mosaic††	11-3/8" x 10-1/4" Sheet (30.00 cm x 25.00 cm Sheet)	1/4"	9.72	12
	3 x 3 Encaustic Mosaic††	12" x 12" (30.48 cm x 30.48 cm)	1/4"	10.00	10

*Colorbody™ Porcelain *Glazed Porcelain †Ceramic ††Dot-mounted

TRIM

Description	Number	Size	Shape
Floor Bullnose	P-43F9	3 x 24	
Cove Base	P-36C9TB	6 x 12	
Cove Base Outcorner	PC-36C9TB	6 x 1	

Cove base trim is intended to coordinate with floor tile in the standard 90-degree installation position.
Cove base and cove corner trim are suitable for non-freezing climates only.

APPLICATIONS

	Target DCOF wet	Suitable
Dry & Level - Interior Floor	N/A	■
Wet & Level - Interior Floor	≥ 0.42	■
Shower Floors (Residential or Light Commercial)	≥ 0.42	■*
Exterior Floor Applications (including pool decking & other wet areas with minimal footwear)	≥ 0.60	■
Ramps & Inclines	≥ 0.65	■
Walls/Backsplashes	N/A	■
Countertops	N/A	■
Pool Linings	N/A	■*

A DCOF value of ≥0.42 is the standard for tiles specified for level interior spaces expected to be walked upon when wet, as stated in ANSI A137.1-A326.3. For more information about DCOF and the DCOF AcuTest™, visit marazzitile.com/DCOF.

APPLICATION NOTES:

Floor tile suitable for exterior applications in freezing and non-freezing climates, when proper installation methods are followed.

Mosaic tile suitable for exterior applications in non-freezing climates, when proper installation methods are followed.

* Mosaic tile only

INSTALLATION

Grout Joint Recommendation	Shade Variation
Floor Tile: 12 x 24 & 24 x 24: 1/8" (3/16" when installing tile with a length 15" or greater in a staggered brick-joint pattern; overlap should not exceed 33%.) 8" Hexagon & 8 x 8 Deco: 3/16"	V2 Medium Variation
Mosaic: 1/8"	

PERFORMANCE CHARACTERISTICS

	ASTM#	Floor Result	Floor Hex/Deco Result	Mosaic Result
Water Absorption	C373	< 0.5%	< 0.5%	< 3.0%
Breaking Strength	C648	> 275 lbs	> 275 lbs	> 250 lbs
Scratch Hardness	MOHS	8.0	7.0	8.0
Chemical Resistance	C650	Resistant	Resistant	Resistant

For additional information on test results, visit us at:
marazzitile.com/information/TestResults.

DURABILITY

Floor Surface Wear Resistance

1	Residential Bathrooms	3	All Residential / Light Commercial
2	All Residential Areas	④	All Residential / Commercial

NOTES

Since there are variations in all fired ceramic and natural products, tile and trim supplied for your particular installation may not match samples. Final confirmation should be made from actual tiles and trim prior to installation. Manufactured in accordance with ANSI A137.1 standards.

Not for use on ramps. Water, oil, grease, improper drainage and certain footwear can create slippery conditions. Floor applications expected to be exposed to these conditions require extra caution in product selection.

For additional information refer to "Factors to Consider" at:
marazzitile.com/Factors.

Special consideration needs to be given when installing tiles greater than 15 inches. Please refer to marazzitile.com/LargeTiles for more information.

Special care should be taken when grouting with dark pigmented colors. A grout release is recommended to prevent finely powdered pigments from lodging in the pores of the surface. Use of a latex modified thin-set is recommended for installation.

FEATURES



All or select items within this series meet the requirements for these qualifications. For more information visit marazzitile.com.

Published 04.20