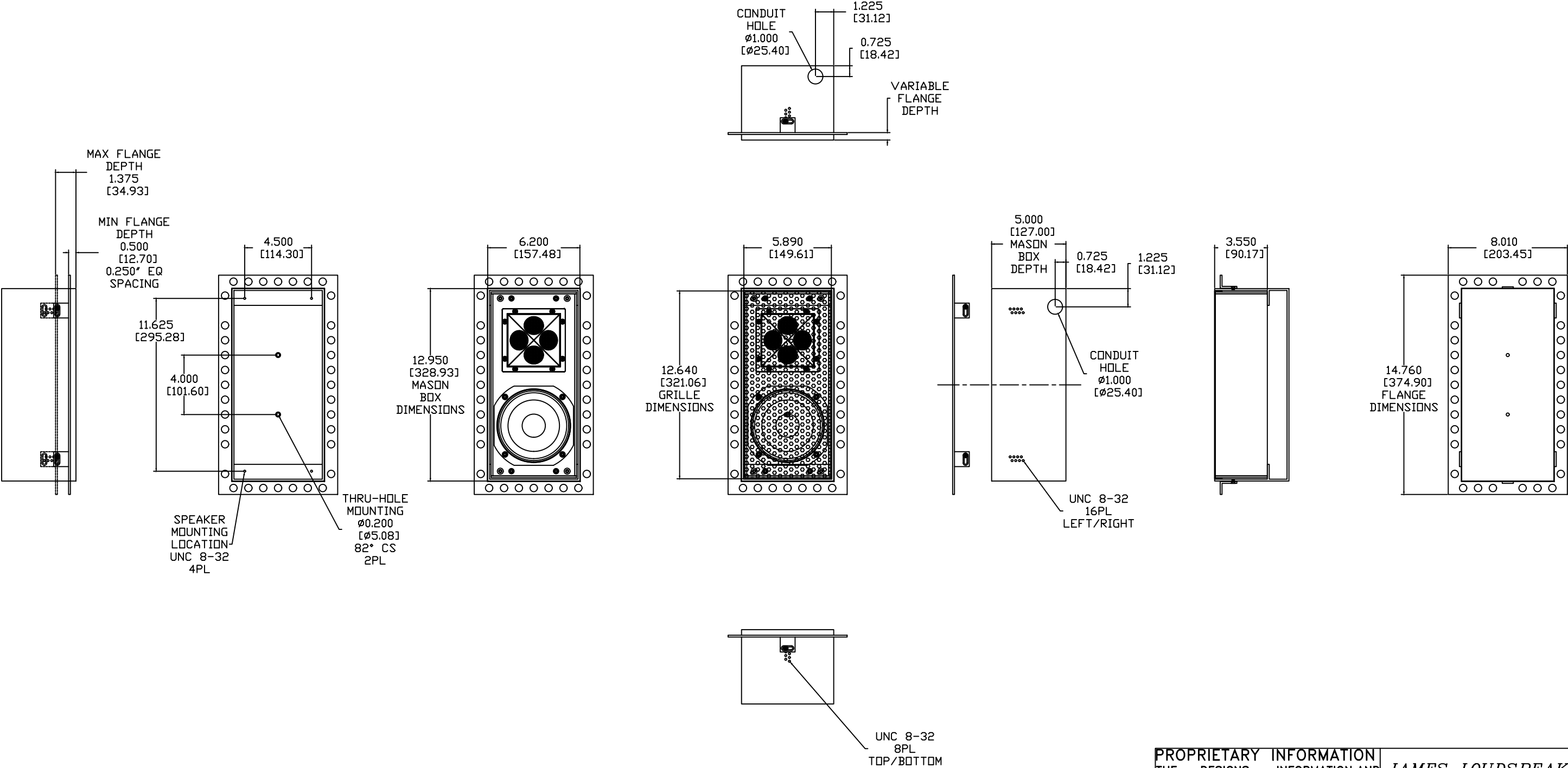
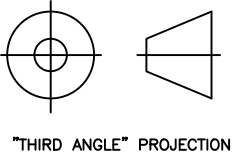


REVISIONS				
ECN	REV.	DESCRIPTION	DATE	APPROVED
	X1	RELEASE FOR PROTOTYPING	08-30-23	
	X2	CHANGE MOUNTING FLANGE TO TABS	09-22-23	
	X3	CHANGE MOUNTING TABS TO BLOCKS	09-29-23	
	X4	RETURN TO TABS, MANUFACTURING EDITS	10-18-23	
	A	RELEASE FOR PRODUCTION	10-19-23	



NOTES:

- 1: MATERIAL - 0.125" THICK 5052 ALUMINUM
UNLESS OTHERWISE SPECIFIED
- 2: FINISH - TBD
- 3: DESIGNED FOR USE WITH STANDARD OW52Q (DWR: 181012-S3C)
- 4: VARIABLE FLANGE DEPTH: AVAILABLE DEPTHS INCLUDE 0.500", 0.675", 0.750", 0.875", 1.00", 1.125", 1.25". & 1.375"



"THIRD ANGLE" PROJECTION

PROPRIETARY INFORMATION		JAMES LOUDSPEAKER	
THE DESIGNS, INFORMATION, AND DATA CONTAINED HEREIN ARE PROPRIETARY AND ARE SUBMITTED IN CONFIDENCE, AND SHALL NOT BE DISCLOSED, USED OR DUPLICATED IN WHOLE OR IN PART, FOR ANY PURPOSES WHATSOEVER, WITHOUT THE PRIOR WRITTEN PERMISSION OF JAMES LOUDSPEAKER LLC, 2185 PARK PL, MINDEN, NV 89423. THIS LEGEND SHALL BE MARKED ON ANY REPRODUCTIONS HEREOF IN WHOLE OR IN PART. RECEIPT OF THIS DOCUMENT SHALL BE DEEMED TO BE AN ACCEPTANCE OF THE CONDITIONS SPECIFIED HEREIN.		STOCK OW52Q.MB	
		EXTERNAL DIMENSIONS	
		P/N: -	
		DWR #: 230830-T301	
		REVISED BY:	
		DRAWN BY: G. TAYLOR	
		DATE: 08-30-23	
		APPROVED:	
		DRAFTING APPROVED:	
		SCALE:	
		TOLERANCES: ANG: ± = .5° FRACT. ± = 1/32	
		DECIMALS: .XX ± = .01 .XXX ± = .005	
		REVISION: A	
		SHEET 1 OF 4	