

Assembly & Installation Instructions

CAUTION: Read instructions carefully and turn electricity off at main circuit breaker panel before beginning installation.

4489, 4490

WARNING - If any Special Control Devices are used with this Fixture, Follow the Instructions Carefully to assure full compliance with N.E.C. requirements. If there are any questions, contact a Qualified Electrical Contractor.

CAUTION - All glass is fragile, use care when handling Glass component(s) and or Lamp(s).

WARNING - This product contains chemicals known to the State of California to cause cancer, birth defects and /or other reproductive harm. Thoroughly wash hands after installing, handling, cleaning, or otherwise touching this product.

ASSEMBLY STEPS:

PASOS PARA ENSAMBLAR:

MODE D'ASSEMBLAGE:

1. D,E → A
2. B,A → C
3. Y,Z,H → D
4. Z → H
5. F → R,Q,P,N
6. Q → R
7. P → Q
8. N → P
9. M → N
10. L,K → J
11. J → H
12. F → M,L,K,J,H,D
13. F → G
14. K,L → H
15. T,U → S
16. V → S

**B, C, G & X
(NOT FURNISHED)
(NO INCLUIDA)
(NON FOURNIE)**

TO LOCK
APRETAR
À VERROUILLER

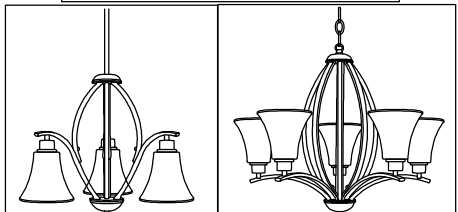
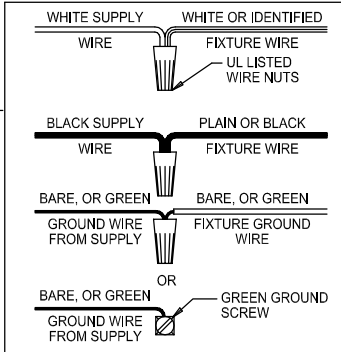
1/2" [13mm]

6" [152mm]

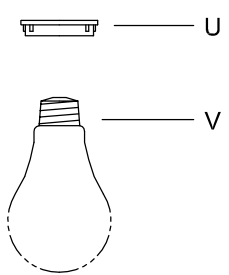
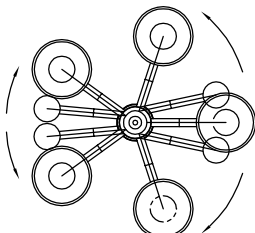
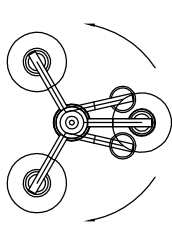
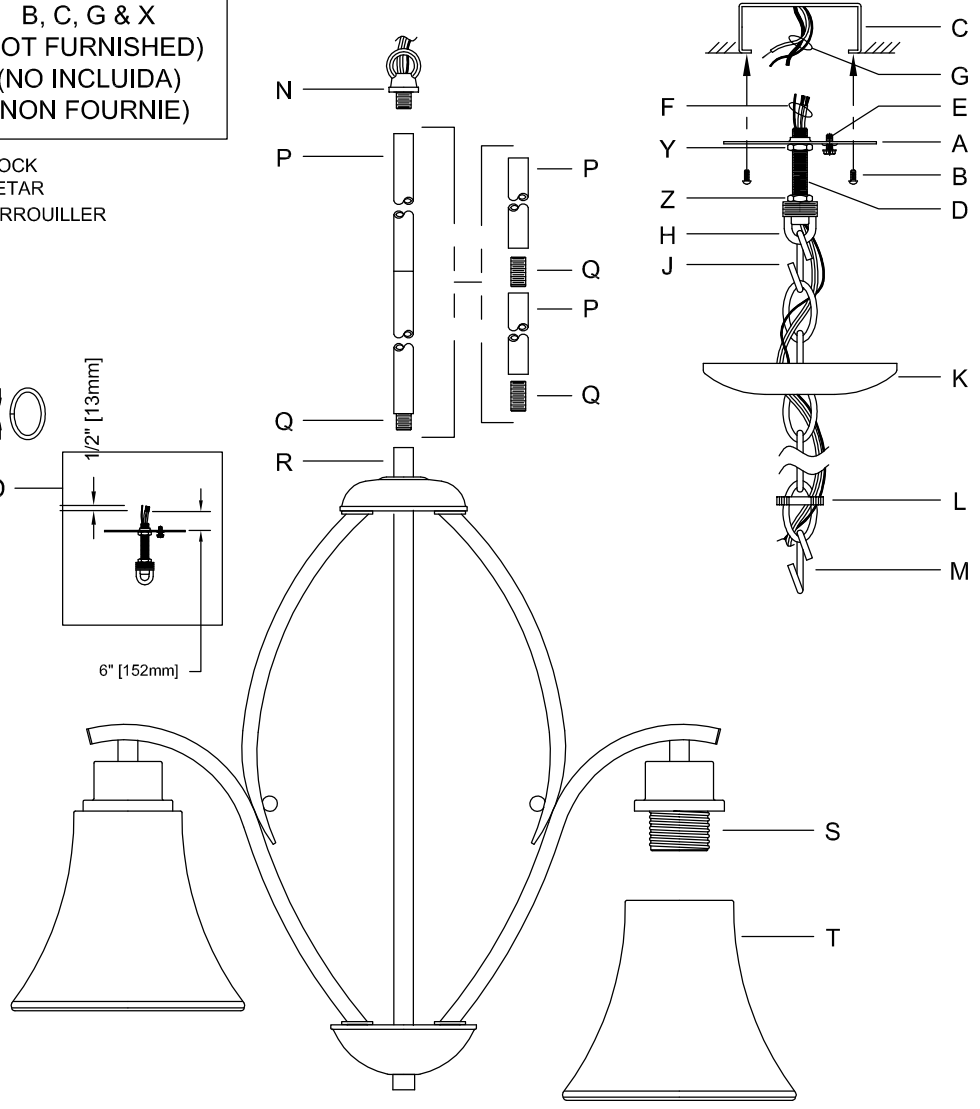
ADJUST HEIGHT WITH "D"
Y → A (TO LOCK)

AJUSTAR LA ALTURA CON "D"
Y → A (APRETAR)

RÉGLEZ LA HAUTEUR AVEC "D"
Y → A (À VERROUILLER)



Attach (P), (Q) to achieve overall desired length.
Una (P), (Q) para lograr la longitud deseada.
Joignez (P), (Q) pour obtenir la longueur voulue.



P4489

P4490

DIAGRAM - A

- Adjust Arms, if required, as shown in diagram A.
- Ajuste los brazos, como necesario, según el diagrama A.
- Ajustez les branches, comme nécessaire, selon le diagramme A.