

BLACK DIAMOND®

Project Name: _____

Location: _____

Item #: _____

Qty: _____

Black Diamond Undercounter Refrigerator, 1 Solid Door, 6.3 Cu. Ft. Capacity, in Stainless Steel

GRUCRF-27



Designed for demanding commercial kitchens, the Black Diamond Undercounter Refrigerator offers reliable performance and ample storage. Constructed with a stainless steel door, it ensures durability and longevity. With a capacity of 6.3 cubic feet, it provides substantial ingredient storage. It maintains a temperature range of 33° to 40°F, ideal for perishable goods. The fully automatic controller enhances user convenience, while the R290 refrigerant supports efficient cooling. Easy to clean, this undercounter fridge is perfect for busy kitchens.

FEATURES AND CONSTRUCTION

- Capacity of 6.3 Cu. Ft. provides ample storage for ingredients
- Equipped with a 0.5 horsepower compressor for efficient cooling
- Constructed with durable stainless steel for longevity
- Maintains a temperature range of 33° to 40°F for freshness
- Uses environmentally-friendly R290 refrigerant
- Operates on 115V with a NEMA-5-15P plug for convenience
- Features adjustable shelving to accommodate various storage needs
- Features four casters for easy mobility in any setting
- Fully automatic controller for precise temperature management
- Perfect for ingredient storage and kitchen prep needs

ELECTRIC

115VV / 60Hz / 1Ph

Cord Length (Inches): 90.60

Plug Type: NEMA 5-15P

Cord set included

NEMA 5-15P



3RD PARTY APPROVALS



WARRANTY (USA / CANADA)

Two (2) Year Limited Warranty on Parts and Labor, Five (5) Year Warranty on Compressor and Evaporator

Contact us for details at 1.877.368.2797



STORAGE CAPACITY

- Cubic Feet: 6.3 cu. ft.

TEMPERATURE

- Holding Temperature (Fahrenheit): 33° - 40°

These models are designed to operate in an environment where temperature and humidity do not exceed 75°F (24°C) and 55% relative humidity

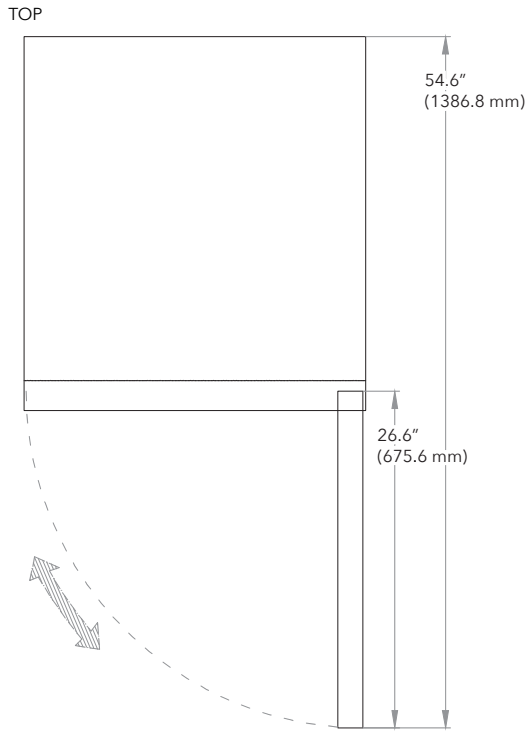
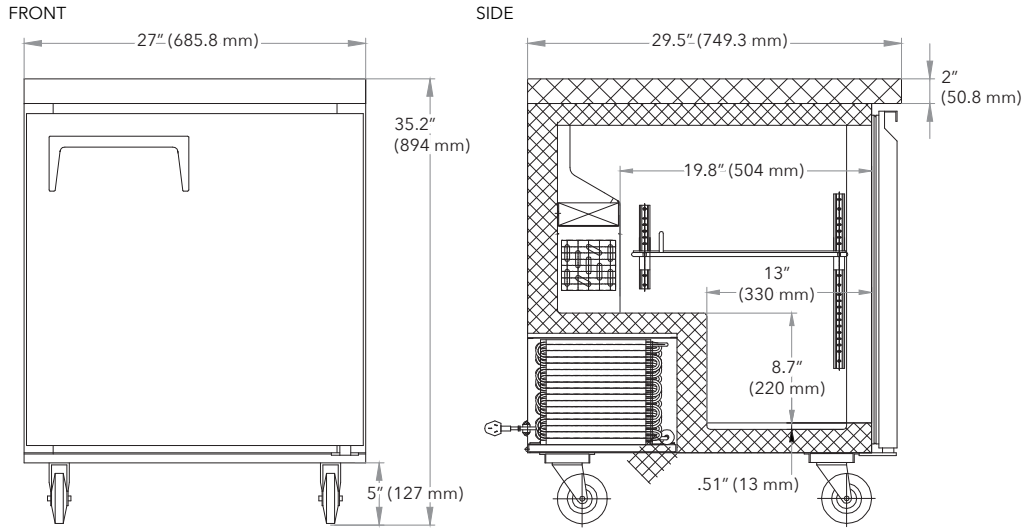


Black Diamond 1 Door Undercounter Refrigerator

GRUCRF-27

FRONT

SIDE



TOP

Undercounter

Doors	Shelves	Amps	HP	Refrigerant	Assembled Dimensions (in)	Item Weight (lbs)	Shipping Weight (lbs)
1	1	2.2A	1/5	R290	27.00" x 29.50" x 35.20"	158.4	202.0

Due to periodic changes in designs, methods, procedures, policies and regulations, the specifications contained in this document are subject to change without notice. While we exercise good faith efforts to provide information that is accurate, we are not responsible for errors or omissions in information provided or conclusions reached as a result of using the specifications. By using the information provided, the user assumes all risks in connection with such use.