







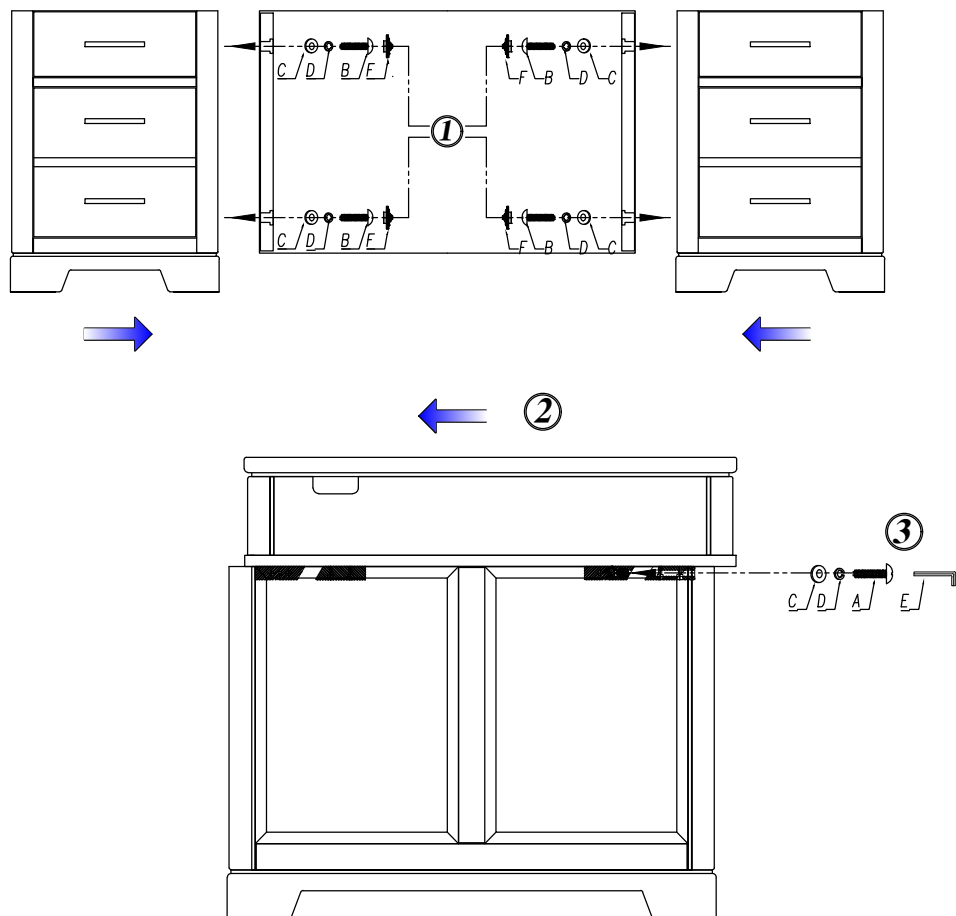
# HEKMAN

X A HOWARD MILLER COMPANY

## ASSEMBLY INSTRUCTIONS

### 7-9190 JUNIOR EXECUTIVE DESK

NO.	Hardware List	Q'ty
A	 Bolt 5/16" *3-15/16"L	2
B	 Bolt 5/16" *1-9/16"L	4
C	 Flat Washer 5/16" Dia	6
D	 Lock Washer 5/16" Dia	6
E	 Wrench 3/16" Dia*4-3/4"L	1
F	 Bolt Cover Caps	4



- Step 1: Assemble the left & right pedestals and modesty panel with Bolts(B), Lock Washers(D), Flat Washers(C) by using Wrench(E), finally cover by Bolt Cover Caps(F).
- Step 2: Place the top assembly on the pedestals. As shown in the side view the top assembly is set a little forward on the pedestals then pushed back to lock the french cleats.
- Step 3: Open the upper drawers in the pedestals.
- Step 4: Screw the top assembly and pedestals with Bolt(A), Lock washer(D) and Flat washer(C) by using Wrench(E).
- Step 5: Close the upper drawers.